

# 18159 HWY 15 DECATUR, MS

## 6.4± Acres in Newton County



**\$550,000**

This 3,200 square foot house sits on 6.4± acres on Hwy 15, just two miles north of Decatur in Newton County, MS. When you turn into the property, you will instantly notice the beautiful oaks throughout. The home features four bedrooms with two and a half baths. The sunroom and custom outdoor kitchen has a gas grill, stove, custom wood cabinets, and a wood-burning stone fireplace! The property also features a two-car garage and a detached two-car carport, a 40'x60' shop with stained concrete floors, cedar cabinets, a full bath, and a tool room. There is also central heat and air, a tankless water heater, and Wi-fi. This property also features a private water well, meaning no more water bills. There are also two rental properties on the back of the property, bringing in around \$1,500 a month in income. All this could be yours just minutes from Decatur, MS! To schedule a private showing, call or text Walker!



**WALKER  
TRANUM**  
REALTOR®

Office: 662.268.6333

Cell: 662.769.1442

Walker@TomSmithHomes.com



Expect More. Get More.

**A Real Estate Expert You Can Trust**

TomSmithLandandHomes.com

Information is believed to be accurate but not guaranteed.







## WALKER TRANUM

REALTOR®

Office: 662.268.6333

Cell: 662.769.1442

Walker@TomSmithHomes.com



Expect More. Get More.

## A Real Estate Expert You Can Trust

TomSmithLandandHomes.com

Information is believed to be accurate but not guaranteed.







# WALKER TRANUM

REALTOR®

Office: 662.268.6333

Cell: 662.769.1442

Walker@TomSmithHomes.com



Expect More. Get More.

## A Real Estate Expert You Can Trust

TomSmithLandandHomes.com

Information is believed to be accurate but not guaranteed.





# Aerial Map



Click [Here](#) for a LandId Interactive Map Link



**WALKER  
TRANUM**  
REALTOR®

Office: 662.268.6333

Cell: 662.769.1442

Walker@TomSmithHomes.com



Expect More. Get More.

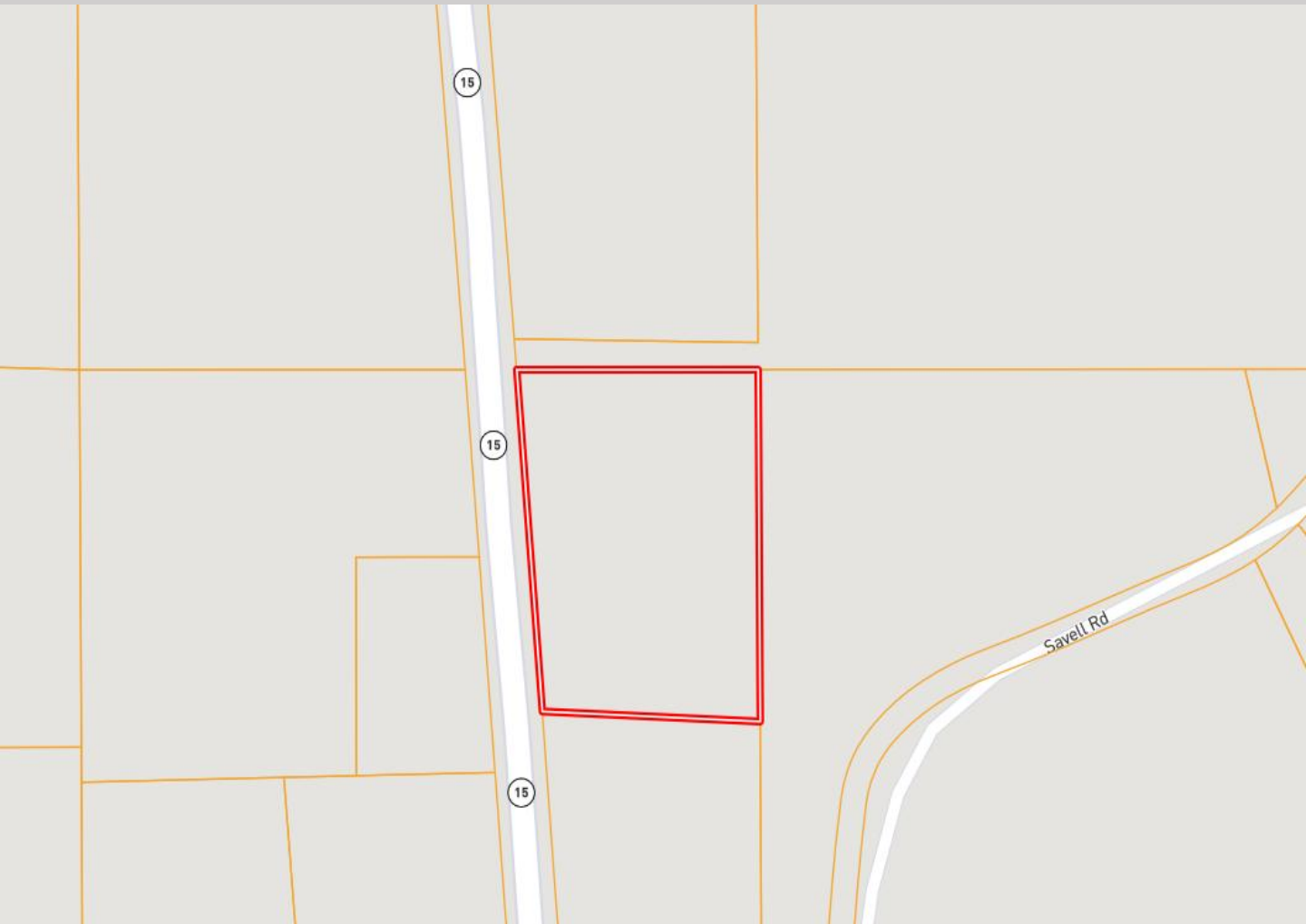
**A Real Estate Expert You Can Trust**

TomSmithLandandHomes.com

Information is believed to be accurate but not guaranteed.



# Ownership Map



**WALKER  
TRANUM**  
REALTOR®

Office: 662.268.6333

Cell: 662.769.1442

[Walker@TomSmithHomes.com](mailto:Walker@TomSmithHomes.com)



Expect More. Get More.

**A Real Estate Expert You Can Trust**

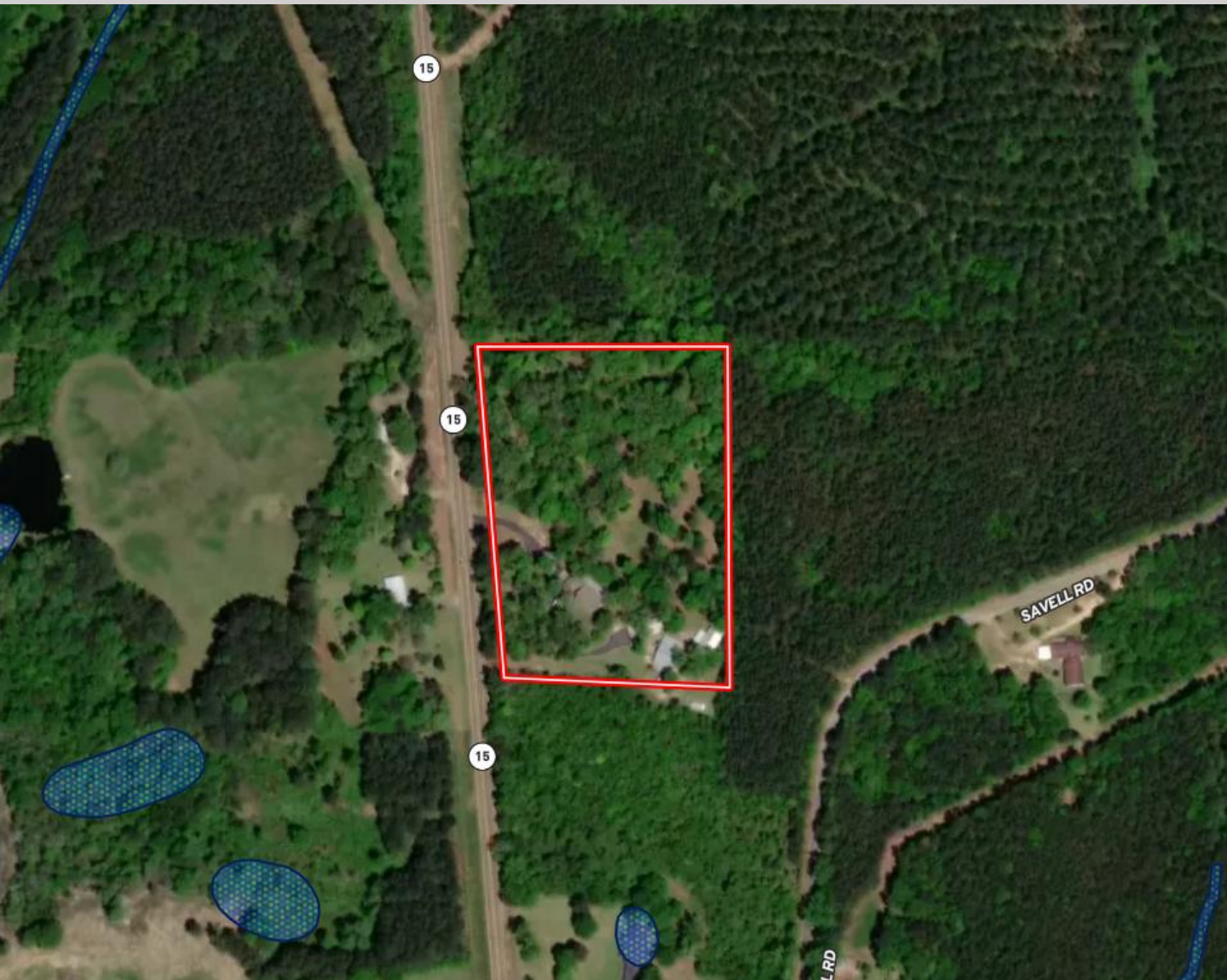
[TomSmithLandandHomes.com](http://TomSmithLandandHomes.com)

Information is believed to be accurate but not guaranteed.





# Flood Map



**WALKER  
TRANUM**  
REALTOR®

Office: 662.268.6333

Cell: 662.769.1442

Walker@TomSmithHomes.com



Expect More. Get More.

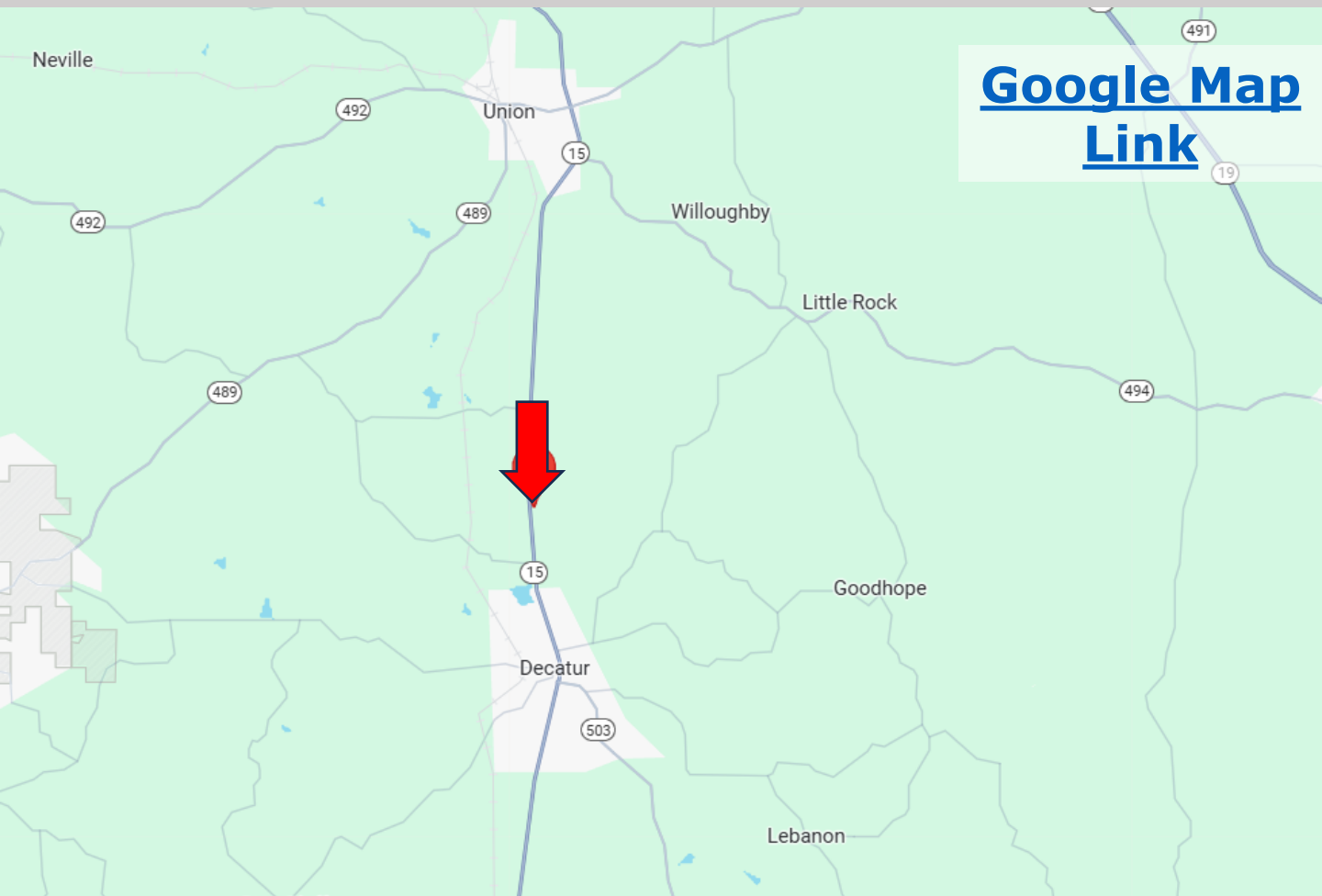
**A Real Estate Expert You Can Trust**

TomSmithLandandHomes.com

Information is believed to be accurate but not guaranteed.



# Directional Map



[Google Map Link](#)

**Directions from Decatur, MS:** Travel Hwy MS-15 North for 2.8 miles. The house will be on your right.



**WALKER  
TRANUM**  
REALTOR®

Office: 662.268.6333

Cell: 662.769.1442

Walker@TomSmithHomes.com



Expect More. Get More.

**A Real Estate Expert You Can Trust**

TomSmithLandandHomes.com

Information is believed to be accurate but not guaranteed.

