

Stunning Country Home with Acreage

30± ACRES WITH A HOME IN SCOTT COUNTY, MS



\$1,175,000

PROPERTY VIDEO

Welcome to your new country retreat on 30± acres in Scott County, MS. Upon leaving Highway 21, a 3/10-mile driveway leads to the stunning house overlooking the pond. The 3,500-square-foot home with a spacious 2,000-square-foot wrap-around porch offers panoramic views of the picturesque 5± acre stocked pond filled with bass and bream. The screened back porch is perfect for sunrise views and has a beautiful wood-burning fireplace. The house has a standing-seam metal roof, and approximately 80-85% of the house was crafted from wood harvested from the property. The four bedrooms and three full baths include a living room with a striking 25-foot vaulted ceiling and a stone fireplace reaching the ceiling, equipped with gas logs. Upstairs, a balcony with a sitting area provides a serene spot to gaze over the pond. The kitchen is a chef's dream, featuring custom-built cabinets, granite countertops, and a gas stove. A 500-gallon in-ground propane tank powers the on-demand water heater, stove, and gas logs. Climate control is ensured by two four-ton AC/heating units for the bottom floor and two two-ton units for the top floor. Additionally, there's a convenient 2-car open-style carport with a storage shed and a bathroom with a sink. The property also has a spacious 30x40 pole barn, walled on three sides, providing ample storage for equipment. Call Colby or Walker to schedule a viewing and experience the beauty of this property firsthand! Additional Acreage Available

11281 Highway 21 Forest, MS, 39074 [GOOGLE MAP LINK](#)



WALKER TRANUM
REALTOR®

O: 662.268.6333 | C: 662.769.1442
Walker@TomSmithHomes.com



Expect More. Get More.



COLBY WATSON
REALTOR®

O: 601.898.2772 | C: 601.668.8096
Colby@TomSmithLand.com

TomSmithLandandHomes.com

Information is believed to be accurate but not guaranteed.





WALKER TRANUM
REALTOR®

O: 662.268.6333 | C: 662.769.1442
Walker@TomSmithHomes.com



COLBY WATSON
REALTOR®

O: 601.898.2772 | C: 601.668.8096
Colby@TomSmithLand.com

TomSmithLandandHomes.com

Information is believed to be accurate but not guaranteed.





WALKER TRANUM
REALTOR®

O: 662.268.6333 | C: 662.769.1442
Walker@TomSmithHomes.com



COLBY WATSON
REALTOR®

O: 601.898.2772 | C: 601.668.8096
Colby@TomSmithLand.com

TomSmithLandandHomes.com

Information is believed to be accurate but not guaranteed.





WALKER TRANUM
REALTOR®

O: 662.268.6333 | C: 662.769.1442
Walker@TomSmithHomes.com



COLBY WATSON
REALTOR®

O: 601.898.2772 | C: 601.668.8096
Colby@TomSmithLand.com

TomSmithLandandHomes.com

Information is believed to be accurate but not guaranteed.





WALKER TRANUM
REALTOR®

O: 662.268.6333 | C: 662.769.1442
Walker@TomSmithHomes.com



COLBY WATSON
REALTOR®

O: 601.898.2772 | C: 601.668.8096
Colby@TomSmithLand.com

TomSmithLandandHomes.com

Information is believed to be accurate but not guaranteed.





WALKER TRANUM
REALTOR®

O: 662.268.6333 | C: 662.769.1442
Walker@TomSmithHomes.com



COLBY WATSON
REALTOR®

O: 601.898.2772 | C: 601.668.8096
Colby@TomSmithLand.com

TomSmithLandandHomes.com

Information is believed to be accurate but not guaranteed.





WALKER TRANUM
REALTOR®

O: 662.268.6333 | C: 662.769.1442
Walker@TomSmithHomes.com



COLBY WATSON
REALTOR®

O: 601.898.2772 | C: 601.668.8096
Colby@TomSmithLand.com

TomSmithLandandHomes.com

Information is believed to be accurate but not guaranteed.





WALKER TRANUM
REALTOR®

O: 662.268.6333 | C: 662.769.1442
Walker@TomSmithHomes.com



COLBY WATSON
REALTOR®

O: 601.898.2772 | C: 601.668.8096
Colby@TomSmithLand.com

TomSmithLandandHomes.com

Information is believed to be accurate but not guaranteed.





WALKER TRANUM
REALTOR®

O: 662.268.6333 | C: 662.769.1442
Walker@TomSmithHomes.com



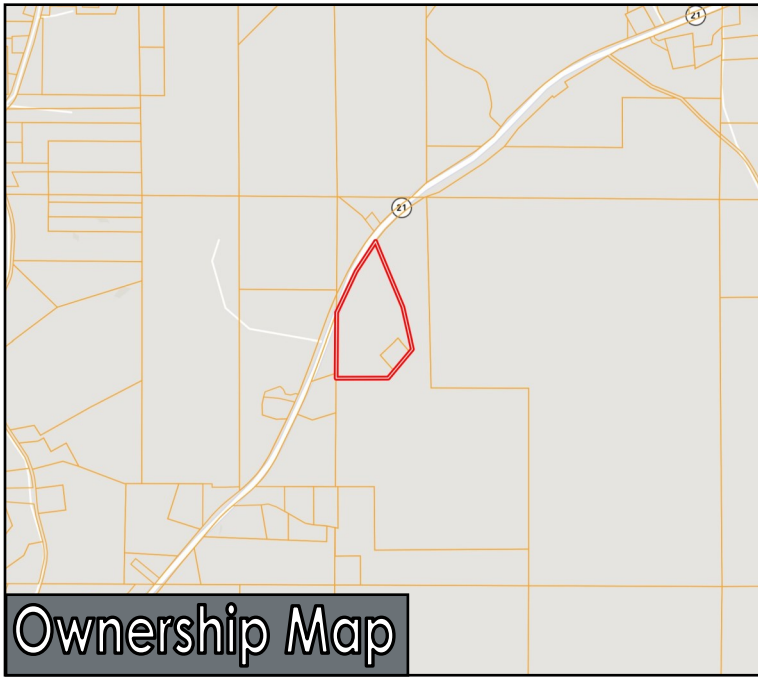
COLBY WATSON
REALTOR®

O: 601.898.2772 | C: 601.668.8096
Colby@TomSmithLand.com

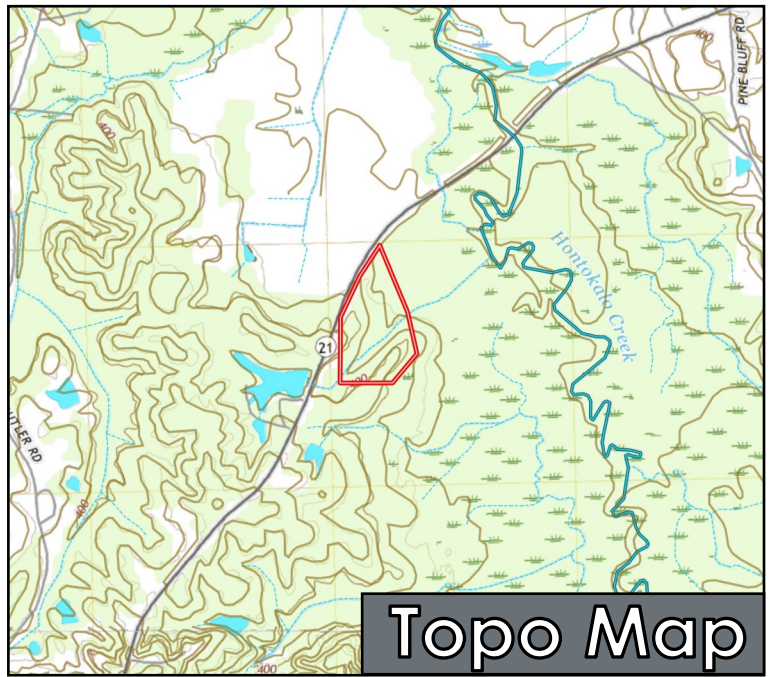
TomSmithLandandHomes.com

Information is believed to be accurate but not guaranteed.

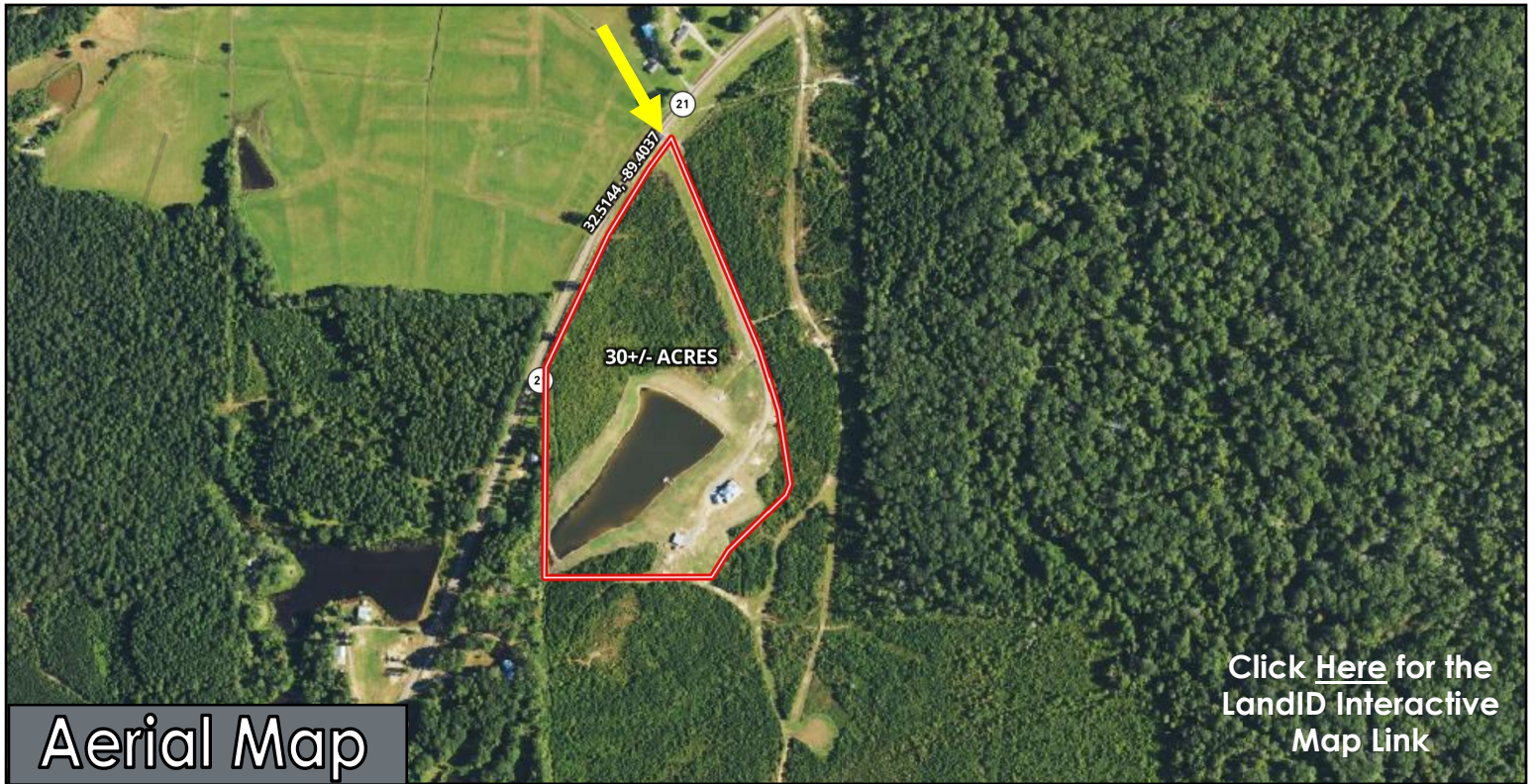




Ownership Map



Topo Map



Aerial Map

Click [Here](#) for the LandID Interactive Map Link

WALKER TRANUM
REALTOR®

O: 662.268.6333 | C: 662.769.1442
Walker@TomSmithHomes.com



COLBY WATSON
REALTOR®

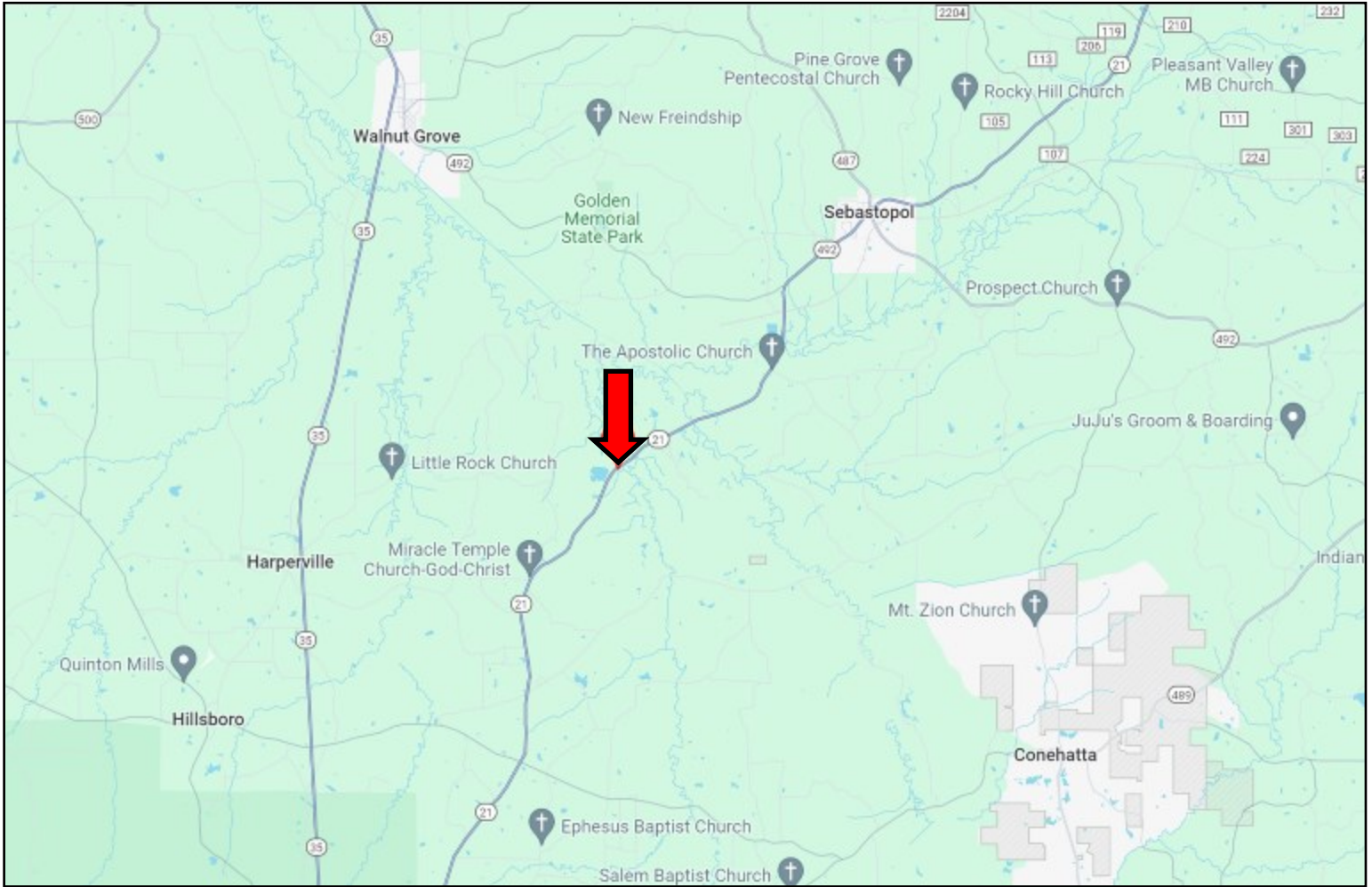
O: 601.898.2772 | C: 601.668.8096
Colby@TomSmithLand.com

TomSmithLandandHomes.com

Information is believed to be accurate but not guaranteed.



Directional Map



DIRECTIONS FROM I-20 AND HWY 35 IN FOREST MS: Take exit 88 towards Forest. Turn left onto Hwy 35 and travel 3.2 miles. Turn right onto Hwy 21 and travel 11.4 miles. The property will be on your right. **11281 Highway 21 Forest, MS, 39074** [GOOGLE MAP LINK](#)



WALKER TRANUM
REALTOR®

O: 662.268.6333 | C: 662.769.1442
Walker@TomSmithHomes.com



COLBY WATSON
REALTOR®

O: 601.898.2772 | C: 601.668.8096
Colby@TomSmithLand.com

TomSmithLandandHomes.com

Information is believed to be accurate but not guaranteed.

