

# DIVERSE RECREATIONAL TRACT



**19± ACRES  
BORDERING  
THE BIENVILLE  
NATIONAL  
FOREST IN  
SMITH  
COUNTY, MS**



**\$106,000**

This 19± acre tract is located just north of Polkville in Smith County and is a true gem for the outdoorsman. Bordered by the Bienville National Forest, this property offers a mix of mature hardwood and pine trees, a winding creek, and direct access to prime hunting grounds. Ideal for a hunting spot, a secluded home site, or a base camp for outdoor adventures, this land promises endless hunting, hiking, and exploring opportunities. Centrally located with easy access to nearby towns, it's a solid investment whether you build a rustic cabin, set up a hunting camp, or keep it a private retreat. Don't miss this chance to own a piece of Mississippi beauty—contact David or Dale today to schedule a viewing!



**DALE WILDS**  
REALTOR®

O: 601.898.2772 | C: 662.715.7109  
Dale@TomSmithLand.com



**DAVID BELDEN**  
ALC®, REALTOR®

O: 601.898.2772 | C: 601.415.3884  
DBelden@TomSmithLand.com

**TomSmithLandandHomes.com**

Information is believed to be accurate but not guaranteed.







**DALE WILDS**  
REALTOR®

O: 601.898.2772 | C: 662.715.7109  
Dale@TomSmithLand.com



**DAVID BELDEN**  
ALC®, REALTOR®

O: 601.898.2772 | C: 601.415.3884  
DBelden@TomSmithLand.com

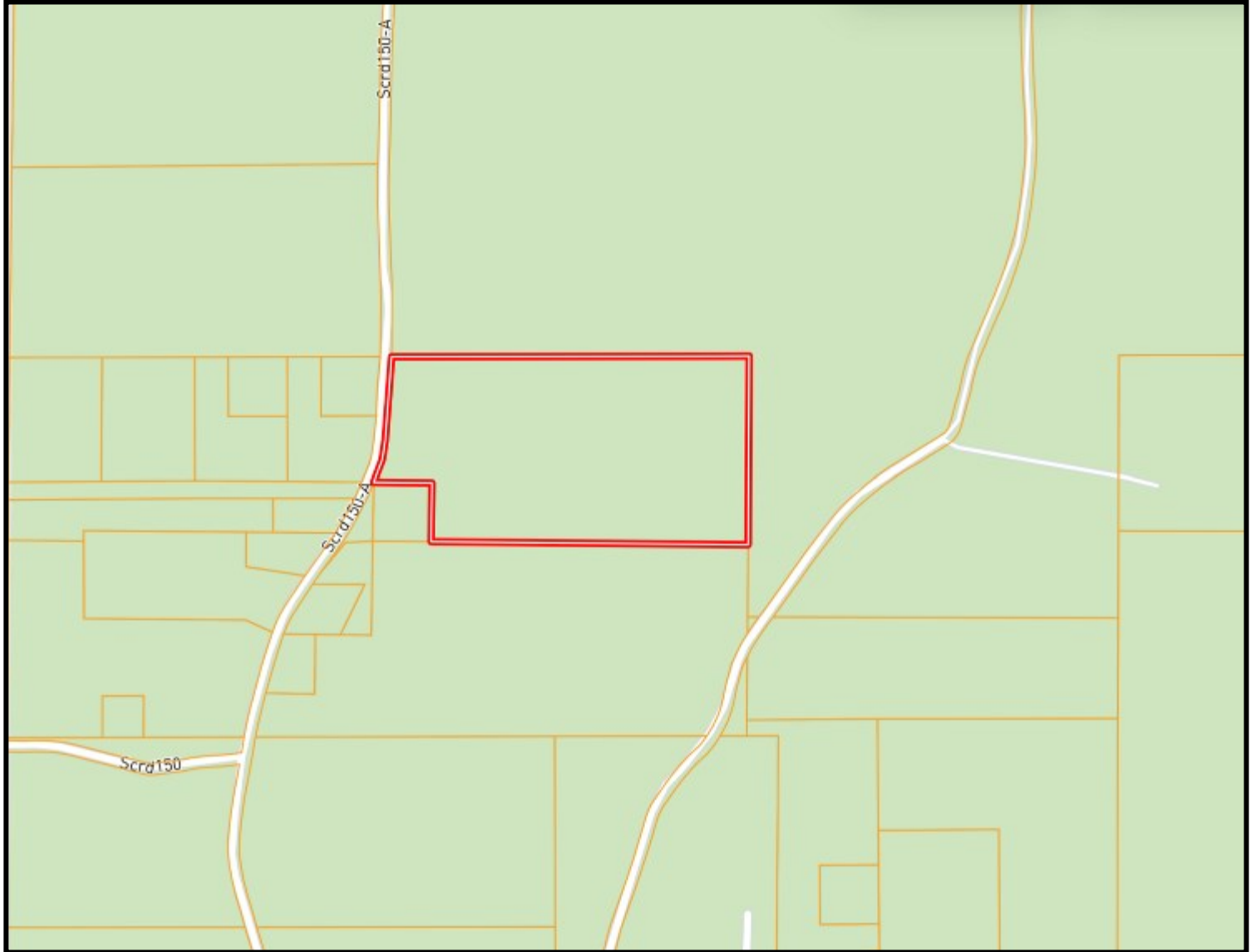
**TomSmithLandandHomes.com**

Information is believed to be accurate but not guaranteed.





# OWNERSHIP MAP



**DALE WILDS**  
REALTOR®

O: 601.898.2772 | C: 662.715.7109  
Dale@TomSmithLand.com



**DAVID BELDEN**  
ALC®, REALTOR®

O: 601.898.2772 | C: 601.415.3884  
DBelden@TomSmithLand.com

**TomSmithLandandHomes.com**

Information is believed to be accurate but not guaranteed.



# AERIAL MAP



[CLICK HERE FOR THE LANDID INTERACTIVE MAP](#)

**DALE WILDS**  
REALTOR®

O: 601.898.2772 | C: 662.715.7109  
Dale@TomSmithLand.com



**DAVID BELDEN**  
ALC®, REALTOR®

O: 601.898.2772 | C: 601.415.3884  
DBelden@TomSmithLand.com

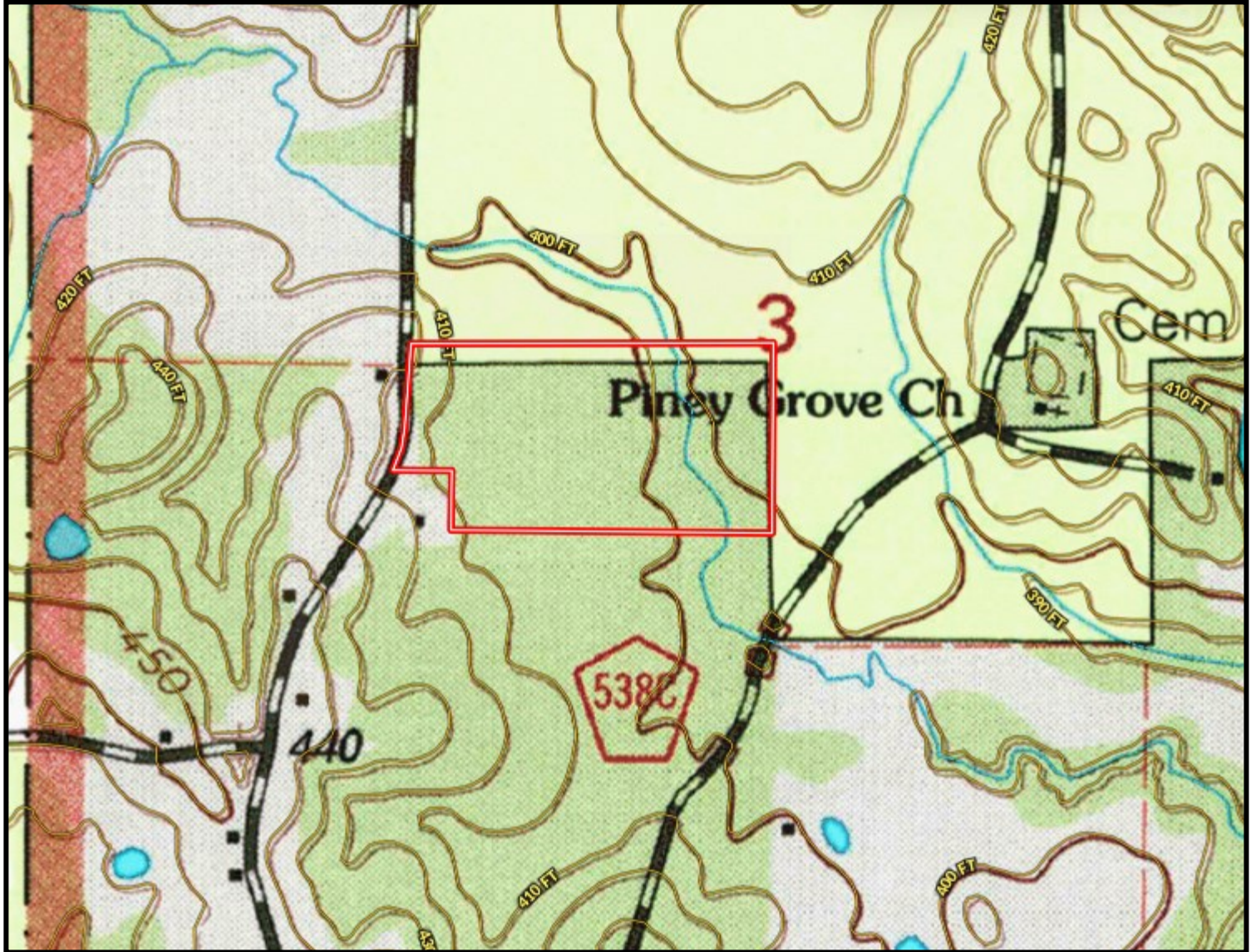
**TomSmithLandandHomes.com**

Information is believed to be accurate but not guaranteed.





# TOPO MAP



**DALE WILDS**  
REALTOR®

O: 601.898.2772 | C: 662.715.7109  
Dale@TomSmithLand.com



**DAVID BELDEN**  
ALC®, REALTOR®

O: 601.898.2772 | C: 601.415.3884  
DBelden@TomSmithLand.com

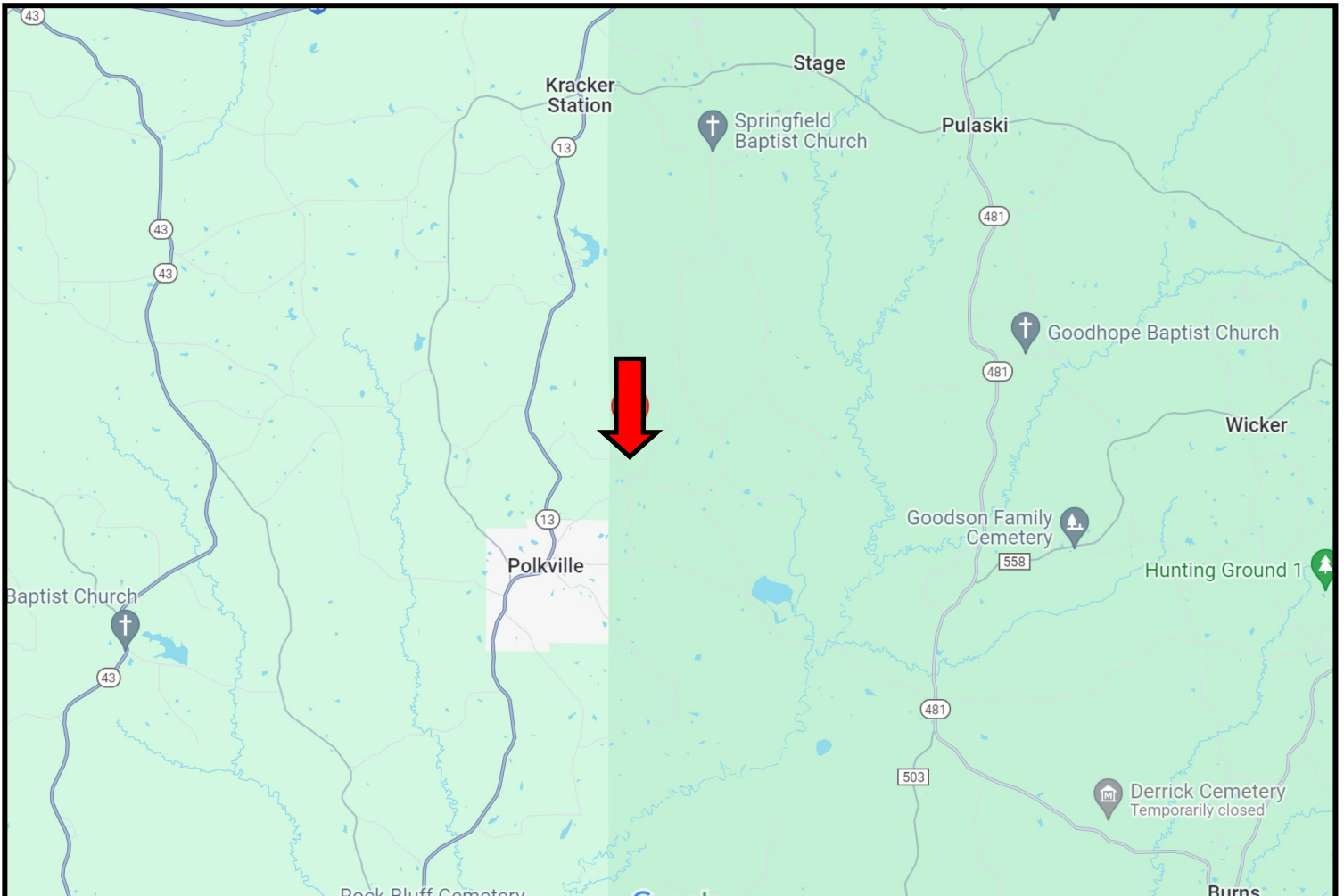
**TomSmithLandandHomes.com**

Information is believed to be accurate but not guaranteed.





# DIRECTIONAL MAP



**Directions from I-20 and Hwy 13 in Morton, MS: Take exit 77 for Puckett and turn right onto Hwy 13S. Travel Hwy 13 for 7.5 miles. Turn left onto SCR 150 and travel 1.3 miles. Turn left onto SCR 150-A. After 0.3 miles, the property will be on the right.**

[Google Map Link](#)



**DALE WILDS**  
REALTOR®

O: 601.898.2772 | C: 662.715.7109  
Dale@TomSmithLand.com



**DAVID BELDEN**  
ALC®, REALTOR®

O: 601.898.2772 | C: 601.415.3884  
DBelden@TomSmithLand.com

**TomSmithLandandHomes.com**

Information is believed to be accurate but not guaranteed.

