

SPACIOUS WASHINGTON COUNTY HOME

307 Oak Court, Hollandale, MS | \$95,000



This 2,184 sq ft home features three bedrooms and two bathrooms with a spacious floor plan. The house is on a quiet city street in Hollandale in Washington County, MS. The open eat-in kitchen and formal dining room provide perfect settings for casual meals and family dinners. The home offers flexible living arrangements, with two bedrooms and one bath on one wing and one bedroom and one bath on the other, potentially converting the latter into a small kitchenette. Enjoy peaceful days on the large wooden deck in the large backyard. Some furniture will remain. With just a few cosmetic upgrades, this could be the spacious home you've been searching for! Call Bruce to schedule your tour today!



**BRUCE
WEST**

REALTOR®

Office: 662.441.2500

Cell: 662.873.3007

Bruce@TomSmithLand.com



Expect More. Get More.

A Real Estate Expert You Can Trust

TomSmithLandandHomes.com

Information is believed to be accurate but not guaranteed.





A Real Estate Expert
You Can Trust!

BRUCE WEST
REALTOR®

O: 662.441.2500 C: 662.873.3007

Bruce@TomSmithLand.com

TomSmithLandandHomes.com



Expect More. Get More.



Information is believed to be accurate but not guaranteed.



A Real Estate Expert You Can Trust!

BRUCE WEST
REALTOR®

O: 662.441.2500 C: 662.873.3007

Bruce@TomSmithLand.com

TomSmithLandandHomes.com



Expect More. Get More.



Information is believed to be accurate but not guaranteed.



A Real Estate Expert You Can Trust!

BRUCE WEST
REALTOR®

O: 662.441.2500 C: 662.873.3007

Bruce@TomSmithLand.com

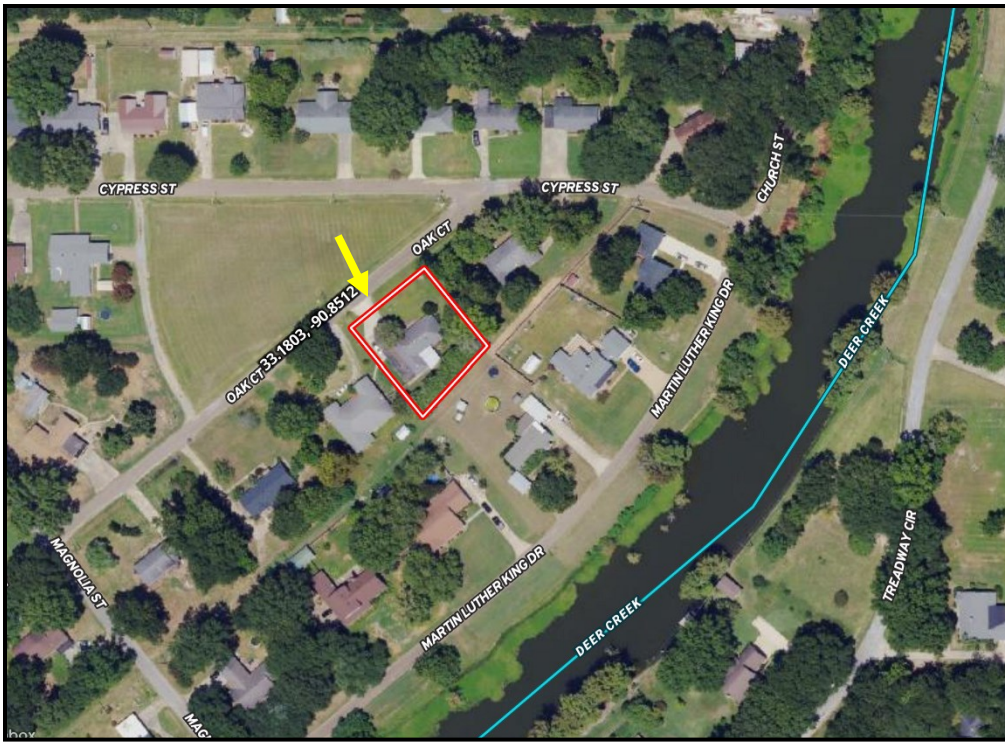
TomSmithLandandHomes.com



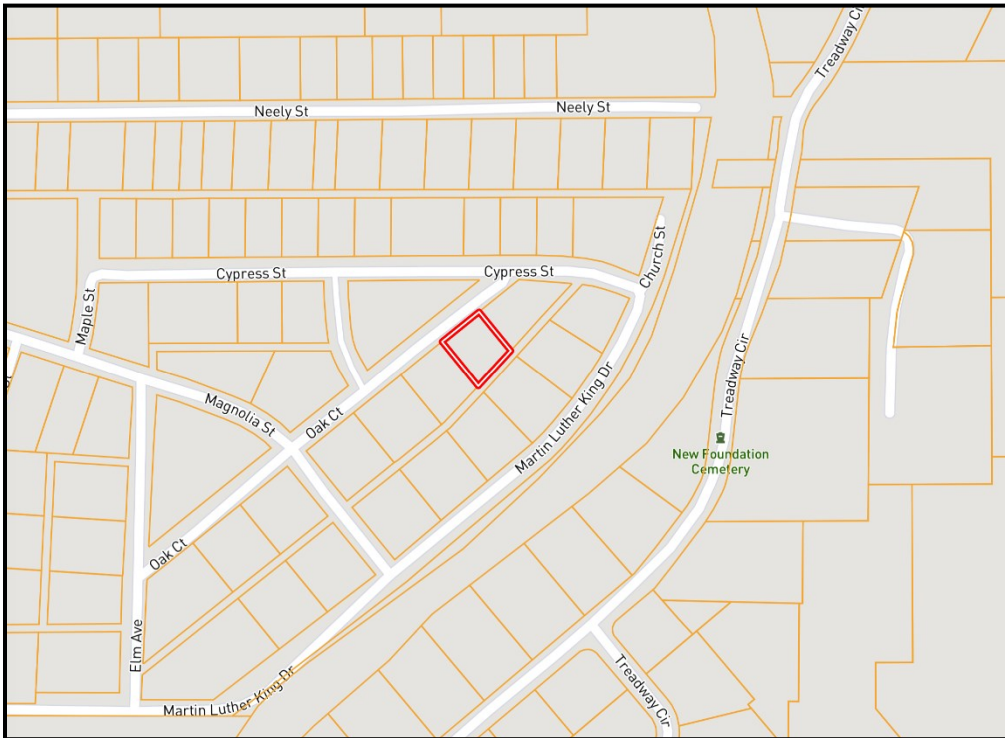
Expect More. Get More.



Information is believed to be accurate but not guaranteed.



Aerial Map



Ownership Map

[Click Here for an Interactive Map](#)

**A Real Estate Expert
You Can Trust!**

BRUCE WEST
REALTOR®

O: 662.441.2500 C: 662.873.3007

Bruce@TomSmithLand.com

TomSmithLandandHomes.com

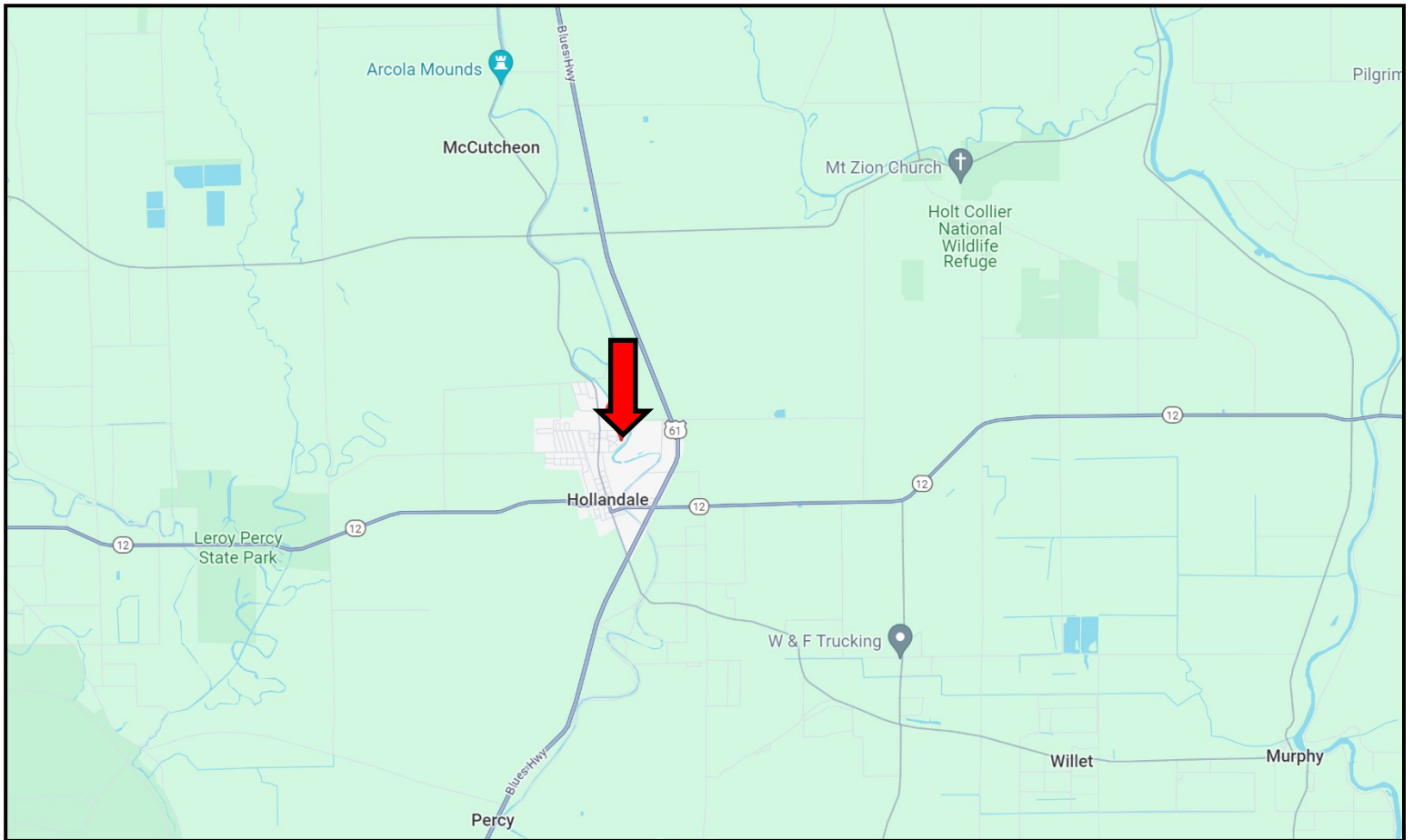


Expect More. Get More.



Information is believed to be accurate but not guaranteed.

Directional Map



Directions from Hwy 12 and Hwy 61 in Hollandale, MS: Travel Hwy 12 for .9 miles. Turn right onto East Avenue and travel .6 miles. Turn right onto Martin Luther King Dr., then turn left onto Elm Ave. Turn right onto Oak Court. After 0.2 miles, the home will be on your left.
307 Oak Court, Hollandale, MS 38748—Click for Google Map Link



**BRUCE
WEST**

REALTOR®

Office: 662.441.2500

Cell: 662.873.3007

Bruce@TomSmithLand.com



Expect More. Get More.

A Real Estate Expert You Can Trust

TomSmithLandandHomes.com

Information is believed to be accurate but not guaranteed.

