

# Madison County Homesite

## 22± Acres in Flora, MS



**\$225,000**

These 22± acres are located off Middle Road in Flora in Madison County, MS, and are beautiful! With several home sites to choose from, as well as a perfect place for your very own lake! Privately situated, you will enjoy complete seclusion for everything except the wildlife sharing this property! This tract of land is priced to sell and awaits you and your family! Call The Land Man and schedule your viewing today!



**TOM  
SMITH**

ALC®, BROKER

Office: 601.898.2772

Cell: 601.454.9397

[Tom@TomSmithLand.com](mailto:Tom@TomSmithLand.com)



Expect More. Get More.

### Call The Land Man Today!

[TomSmithLandandHomes.com](http://TomSmithLandandHomes.com)

Information is believed to be accurate but not guaranteed.





# The Land & Homes Expert *You Can Trust!*

**TOM SMITH**

ALC®, BROKER

O: 601.898.2772 C: 601.454.9397

Tom@TomSmithLand.com

TomSmithLandandHomes.com



Expect More. Get More.

Information is believed to be accurate but not guaranteed.



# Aerial Map



[CLICK HERE FOR THE LANDID INTERACTIVE MAP LINK](#)

The Land & Homes Expert  
*You Can Trust!*

**TOM SMITH**

ALC®, BROKER

O: 601.898.2772 C: 601.454.9397

Tom@TomSmithLand.com

TomSmithLandandHomes.com

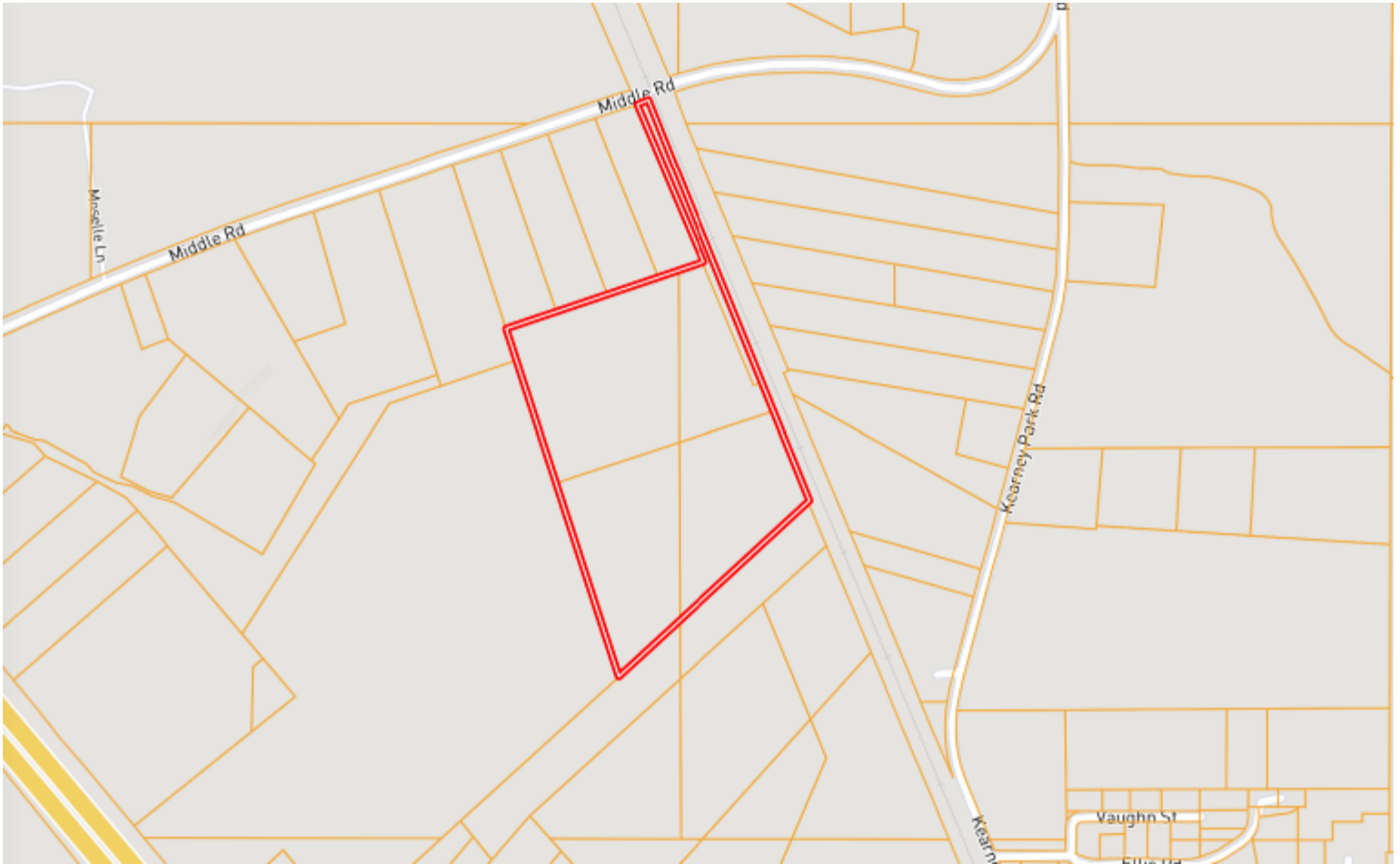


Expect More. Get More.



Information is believed to be accurate but not guaranteed.

# Ownership Map



**The Land & Homes Expert**  
*You Can Trust!*

**TOM SMITH**

ALC®, BROKER

O: 601.898.2772 C: 601.454.9397

Tom@TomSmithLand.com

TomSmithLandandHomes.com



Expect More. Get More.



Information is believed to be accurate but not guaranteed.

# Topo Map



The Land & Homes Expert  
*You Can Trust!*

**TOM SMITH**

ALC®, BROKER

O: 601.898.2772 C: 601.454.9397

Tom@TomSmithLand.com

TomSmithLandandHomes.com



Expect More. Get More.



Information is believed to be accurate but not guaranteed.

# Soil Map



SOIL CODE	SOIL DESCRIPTION	ACRES	%	CPI	NCCPI	CAP
Ar	Ariel silt loam	9.83	43.3	0	76	2w
LoC3	Loring silt loam, 5 to 8 percent slopes, severely eroded, central	6.46	28.46	0	46	4e
LoB2	Loring silt loam, 2 to 5 percent slopes, moderately eroded, central	6.21	27.36	0	55	3e
MeD3	Memphis silt loam, 8 to 12 percent slopes, severely eroded	0.2	0.88	0	75	6e

The Land & Homes Expert  
You Can Trust!

**TOM SMITH**

ALC®, BROKER

O: 601.898.2772 C: 601.454.9397

Tom@TomSmithLand.com

TomSmithLandandHomes.com

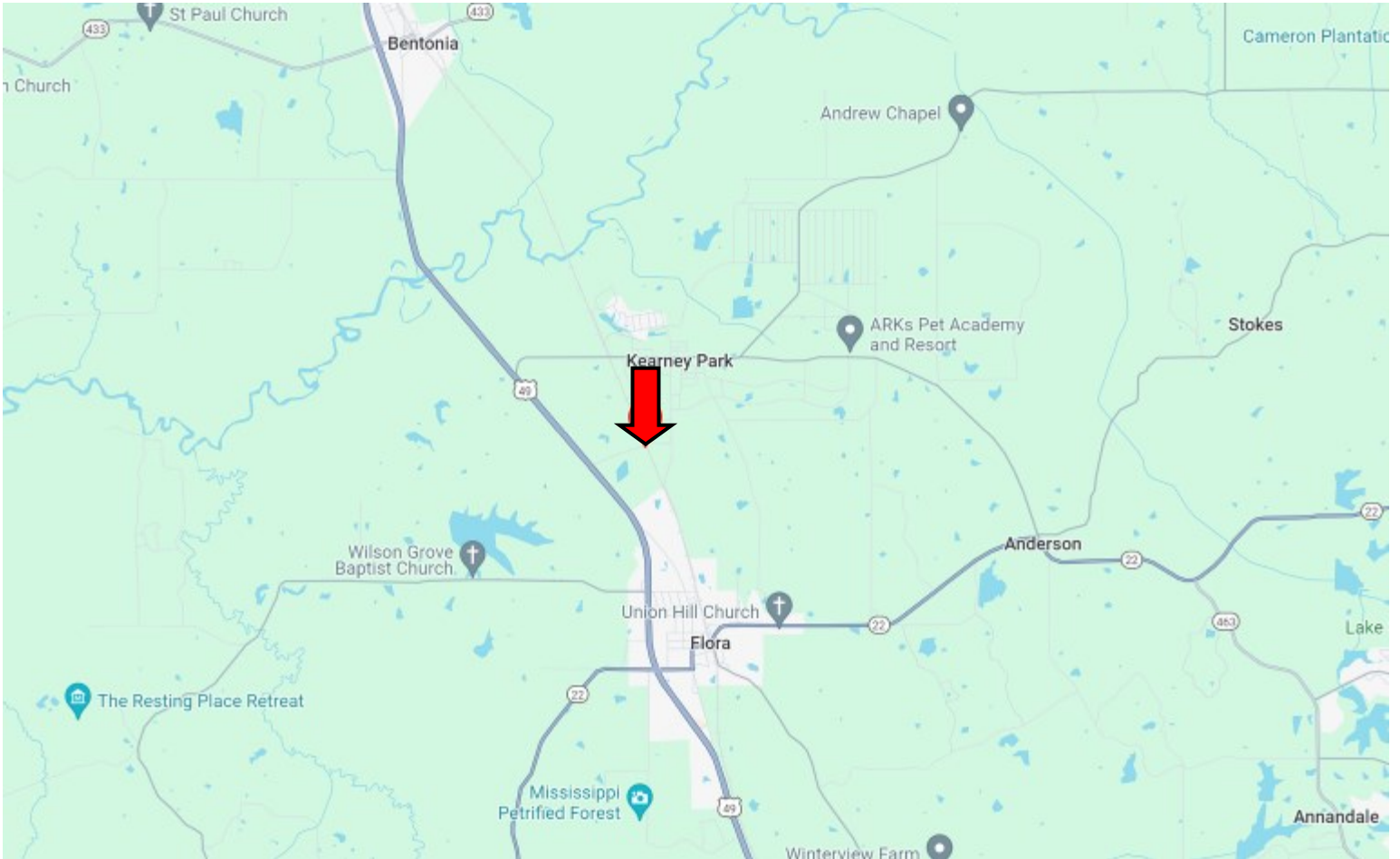


Expect More. Get More.



Information is believed to be accurate but not guaranteed.

# Directional Map



Directions from the Intersection of Hwy 22 and Hwy 49 in Flora, MS: Travel Hwy 49 N for 2.7 miles. Turn right onto Middle Road. After 0.7 miles, the property entrance will be on your right. [GOOGLE MAP LINK](#)



**TOM SMITH**  
ALC®, BROKER  
Office: 601.898.2772  
Cell: 601.454.9397  
Tom@TomSmithLand.com



Expect More. Get More.

## Call The Land Man Today!

TomSmithLandandHomes.com

Information is believed to be accurate but not guaranteed.

