

514 Proctor Rd Grenada, MS 38901

\$275,000



Welcome to 514 Proctor Rd Grenada, MS 38901. Are you tired of living in the city and wanting to find a place in the country? Look no further! This lovely brick home sits on 5.70+/- acres of land in Grenada County and is just 8.8 miles outside Grenada, MS, and only 7 miles from Grenada Lake. The house was built in 2003 and offers a three bed, three baths with an additional room upstairs and downstairs that could be used for multiple purposes such as a 4th bedroom, a game room, or a theatre room. Large tracts of hardwood surround the home so you will see abundant wildlife in and around your yard. The house also has a fenced-in yard, a pole barn, a horse barn, a garage, and a shed. The property's location provides plenty of privacy and has a private driveway. To explore this country home, call Anthony to schedule a tour today!



**ANTHONY
STEEN**

REALTOR®

Office: 662.441.2500

Cell: 662.645.5151

Anthony@TomSmithLand.com



Expect More. Get More.

A Real Estate Expert You Can Trust

TomSmithLandandHomes.com

Information is believed to be accurate but not guaranteed.





A Real Estate Expert
You Can Trust!

ANTHONY STEEN
REALTOR®
O: 662.441.2500 C: 662.645.5151
Anthony@TomSmithLand.com
TomSmithLandandHomes.com

Tom Smith
LAND AND HOMES
Expect More. Get More.

2011-2024
BEST
BONTRAGES

Information is believed to be accurate but not guaranteed.



A Real Estate Expert
You Can Trust!

ANTHONY STEEN
REALTOR®
O: 662.441.2500 C: 662.645.5151
Anthony@TomSmithLand.com
TomSmithLandandHomes.com

Tom Smith
LAND AND HOMES
Expect More. Get More.

2011-2024
BEST
FRANCHISES

Information is believed to be accurate but not guaranteed.



A Real Estate Expert
You Can Trust!

ANTHONY STEEN
REALTOR®
O: 662.441.2500 C: 662.645.5151
Anthony@TomSmithLand.com
TomSmithLandandHomes.com

Tom Smith
LAND AND HOMES
Expect More. Get More.

2011-2024
BEST
REALTORS

Information is believed to be accurate but not guaranteed.



A Real Estate Expert
You Can Trust!

ANTHONY STEEN
REALTOR®
O: 662.441.2500 C: 662.645.5151
Anthony@TomSmithLand.com
TomSmithLandandHomes.com

Tom Smith
LAND AND
HOMES
Expect More. Get More.

2011-2024
BEST
RECRUITING

Information is believed to be accurate but not guaranteed.



A Real Estate Expert
You Can Trust!

ANTHONY STEEN
REALTOR®

O: 662.441.2500 C: 662.645.5151

Anthony@TomSmithLand.com

TomSmithLandandHomes.com

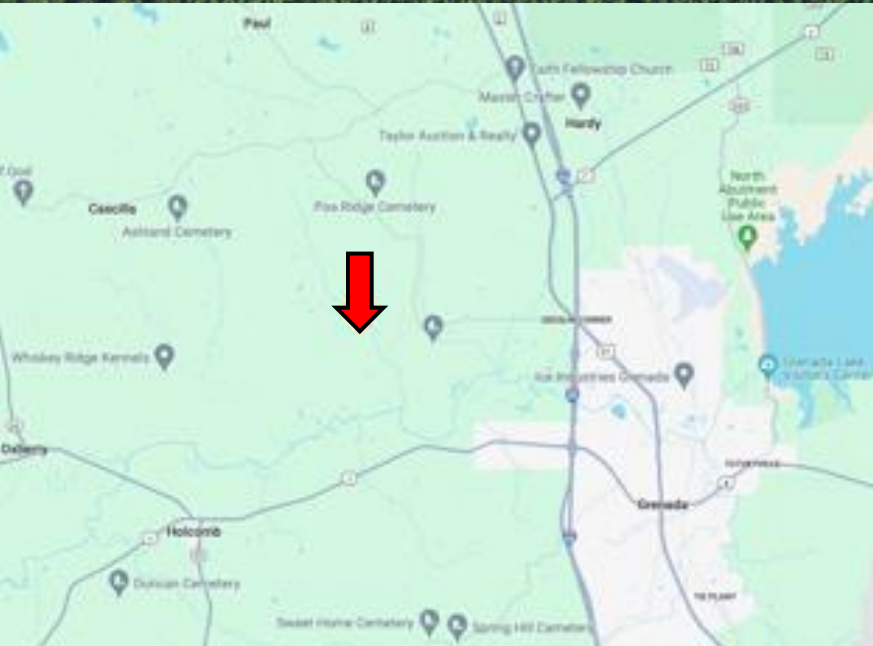


Expect More. Get More.



Information is believed to be accurate but not guaranteed.

MAPS



Address: 514 Proctor Rd Grenada, MS 38901

Directions from I-55, Grenada, MS: Travel north on I-55 N for 1.4 miles. Take exit 208 for Papermill Rd. Turn right onto Papermill Rd and travel 0.5 miles. Turn left onto US-51 N, then take the next left onto Pearidge Rd. and travel 2.4 miles. Continue onto Long Creek Rd for 331 feet, then continue onto Pearidge Rd for 0.7 miles. Turn right to stay on Pearidge Rd for 0.2 miles. Turn left onto McSwine Rd. and travel 1 mile. Take a slight left onto Proctor Rd; after 0.5 miles, the house will be on the left. [Google Map Link](#)

[Click Here for an Interactive Map](#)



**ANTHONY
STEEN**

REALTOR®

Office: 662.441.2500

Cell: 662.645.5151

Anthony@TomSmithLand.com



Expect More. Get More.

A Real Estate Expert You Can Trust

TomSmithLandandHomes.com

Information is believed to be accurate but not guaranteed.

