



Expect More. Get More.

Recreational Hunting Tract

39.6± ACRES IN
CARROLL COUNTY, MS
\$118,920



Look at this fantastic find in Carroll County, MS! With a prime location not far from the West, MS exit of I-55, this 39.6+/- acre property will be perfect for the deer or turkey hunter. There is a mix of young pines providing lots of cover for bedding and nesting areas, and there are also some big timber strips creating ideal hunting spots. A small pond on the property would be a great place to spend the day catching a few fish. Several sites are located far enough from the hunting areas to allow for a future cabin site for you and your family. Call me today to see this hunting property in person!



**COLBY
WATSON**

REALTOR®

Office: 601.898.2772

Cell: 601.668.8096

Colby@TomSmithLand.com



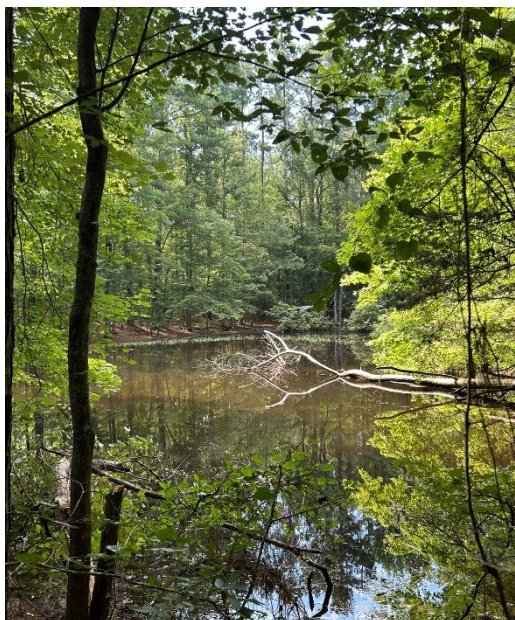
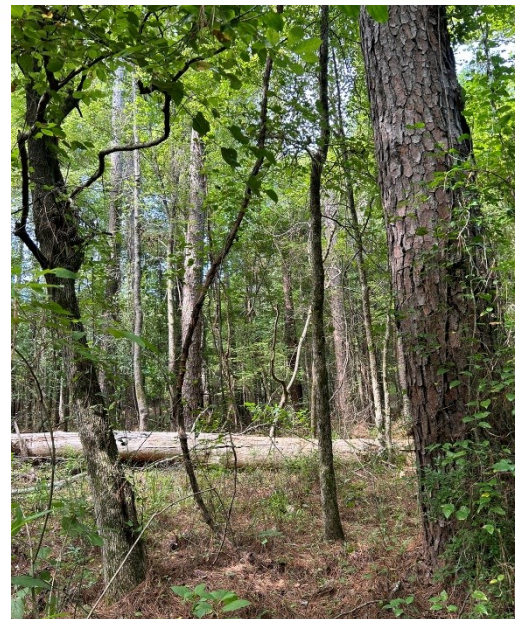
Expect More. Get More.

A Real Estate Expert You Can Trust

TomSmithLandandHomes.com

Information is believed to be accurate but not guaranteed.





A Real Estate Expert *You Can Trust!*

COLBY WATSON
REALTOR®

O: 601.898.2772 C: 601.668.8096

Colby@TomSmithLand.com

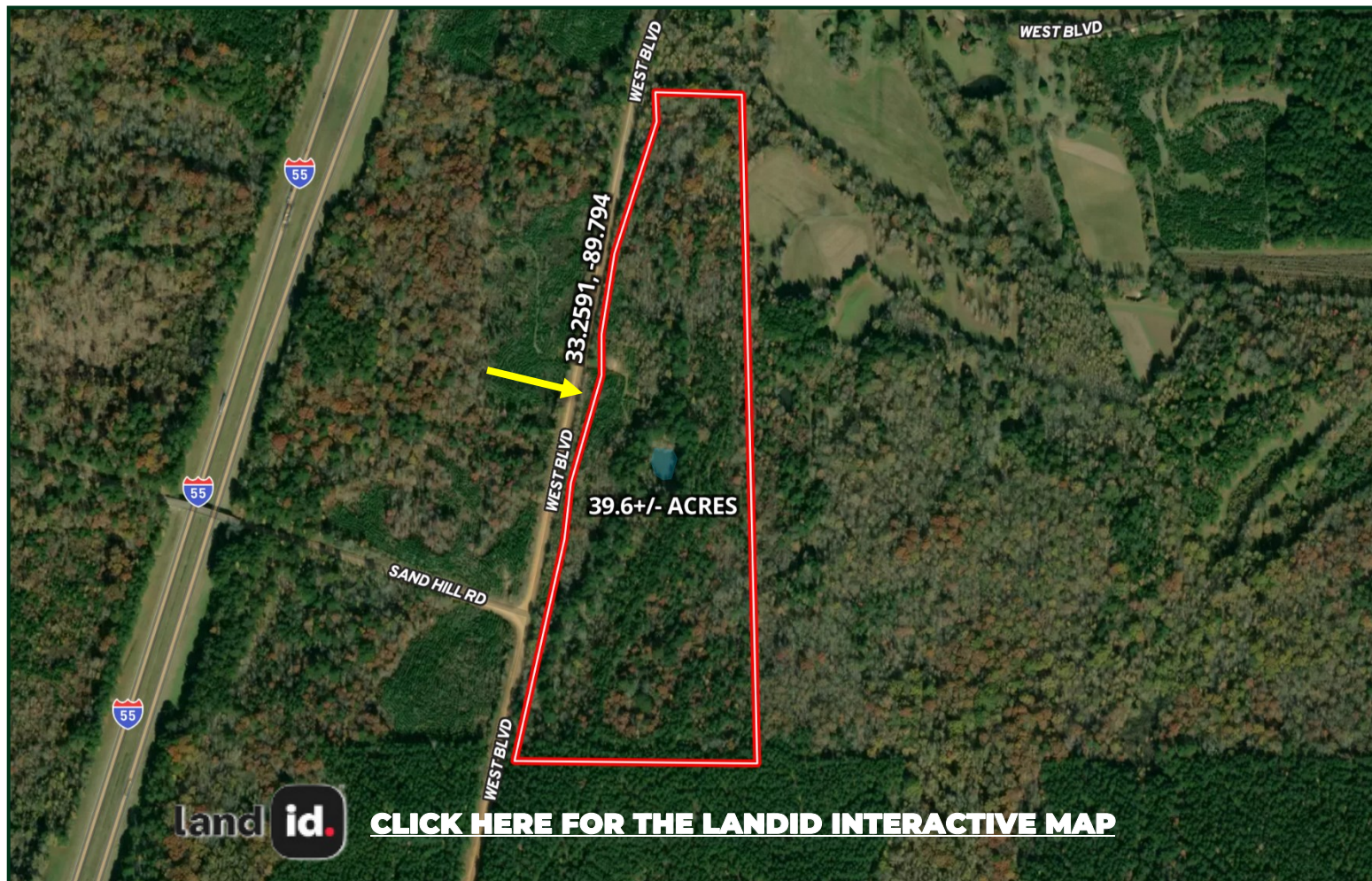
TomSmithLandandHomes.com



Expect More. Get More.



Aerial Map



[CLICK HERE FOR THE LANDID INTERACTIVE MAP](#)

A Real Estate Expert
You Can Trust!

COLBY WATSON
REALTOR®

O: 601.898.2772 C: 601.668.8096

Colby@TomSmithLand.com

TomSmithLandandHomes.com

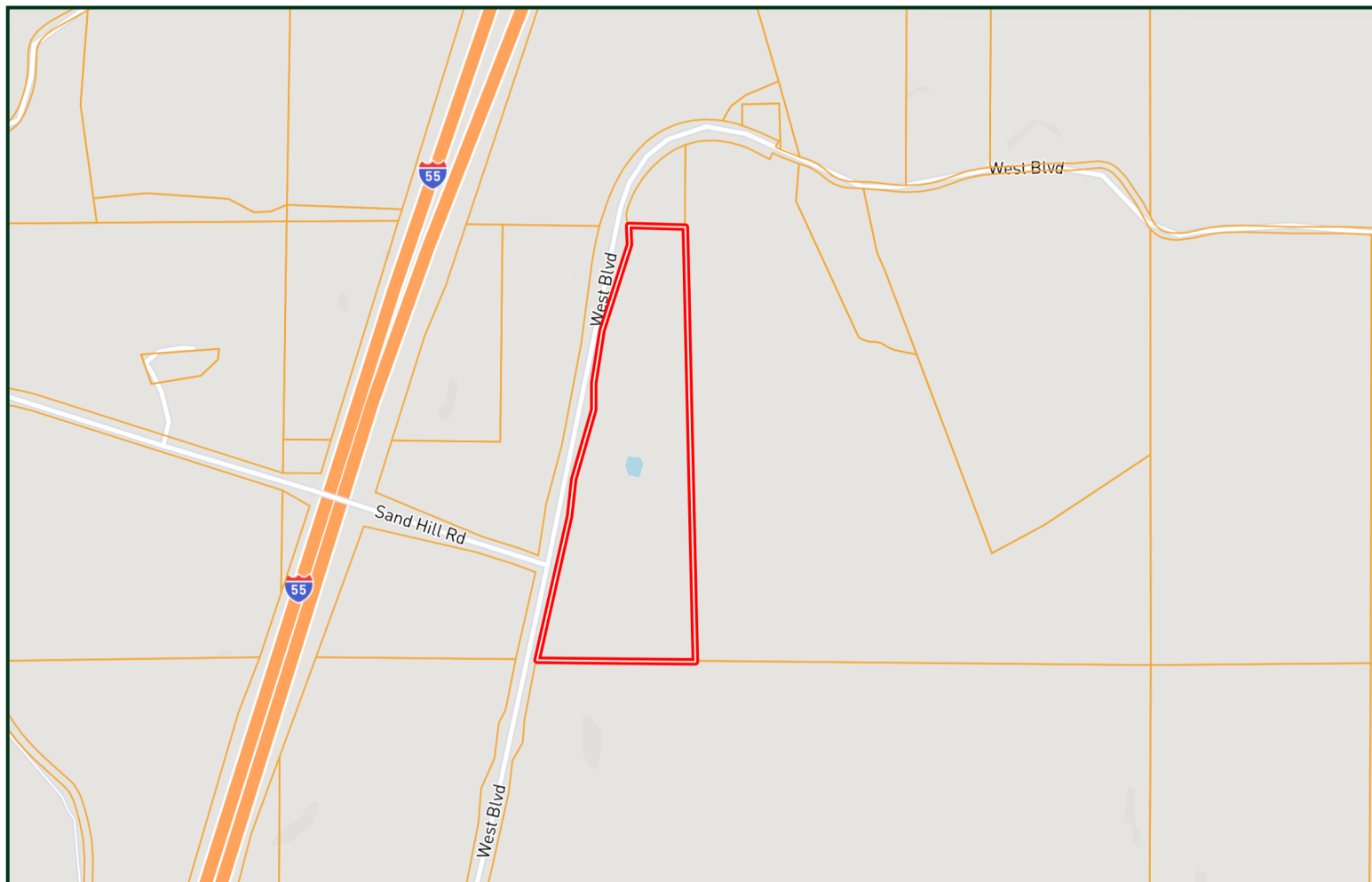


Expect More. Get More.



Information is believed to be accurate but not guaranteed.

Ownership Map



A Real Estate Expert
You Can Trust!

COLBY WATSON
REALTOR®

O: 601.898.2772 C: 601.668.8096

Colby@TomSmithLand.com

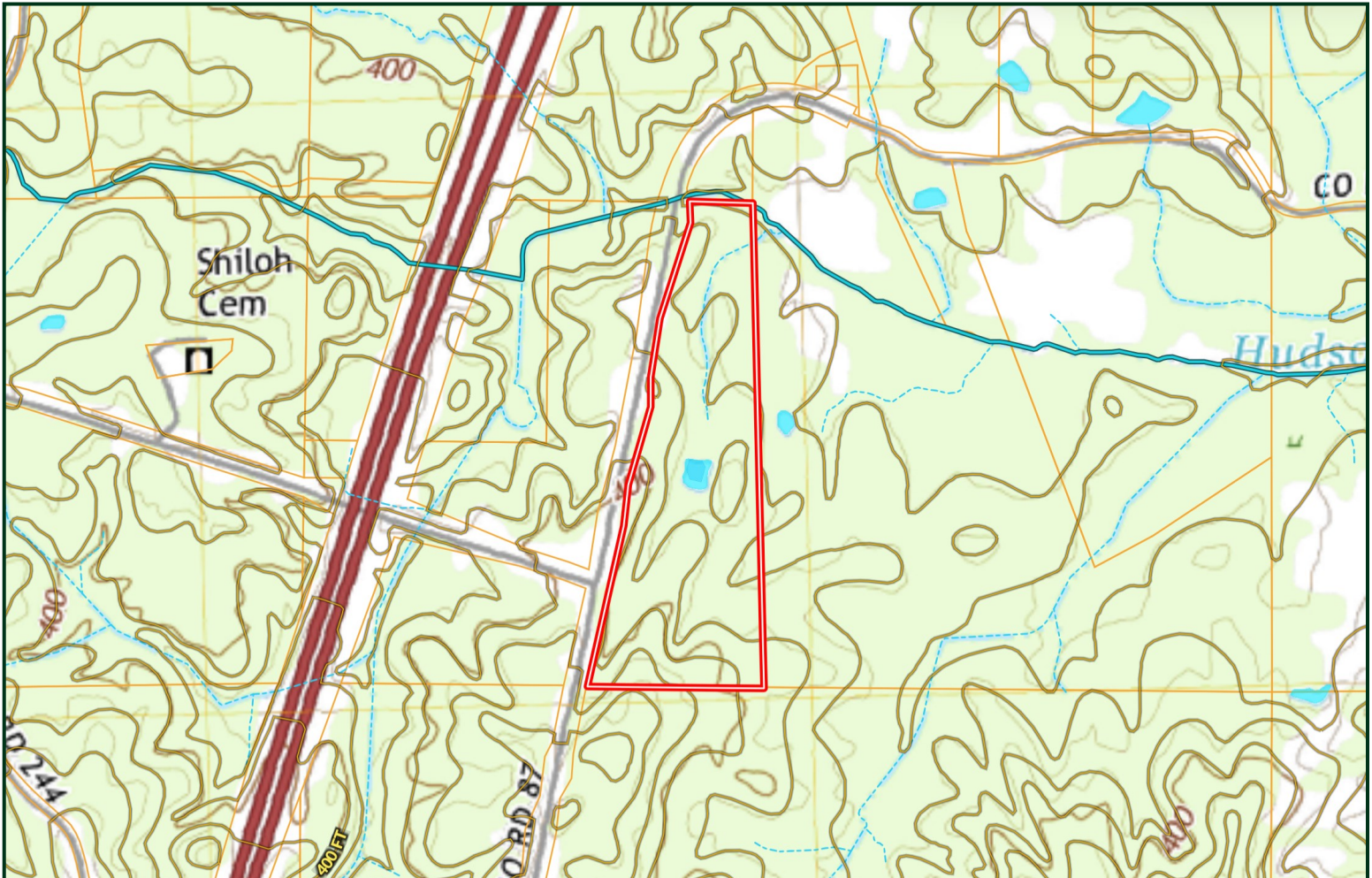
TomSmithLandandHomes.com



Expect More. Get More.



Topo Map



A Real Estate Expert
You Can Trust!

COLBY WATSON
REALTOR®

O: 601.898.2772 C: 601.668.8096

Colby@TomSmithLand.com

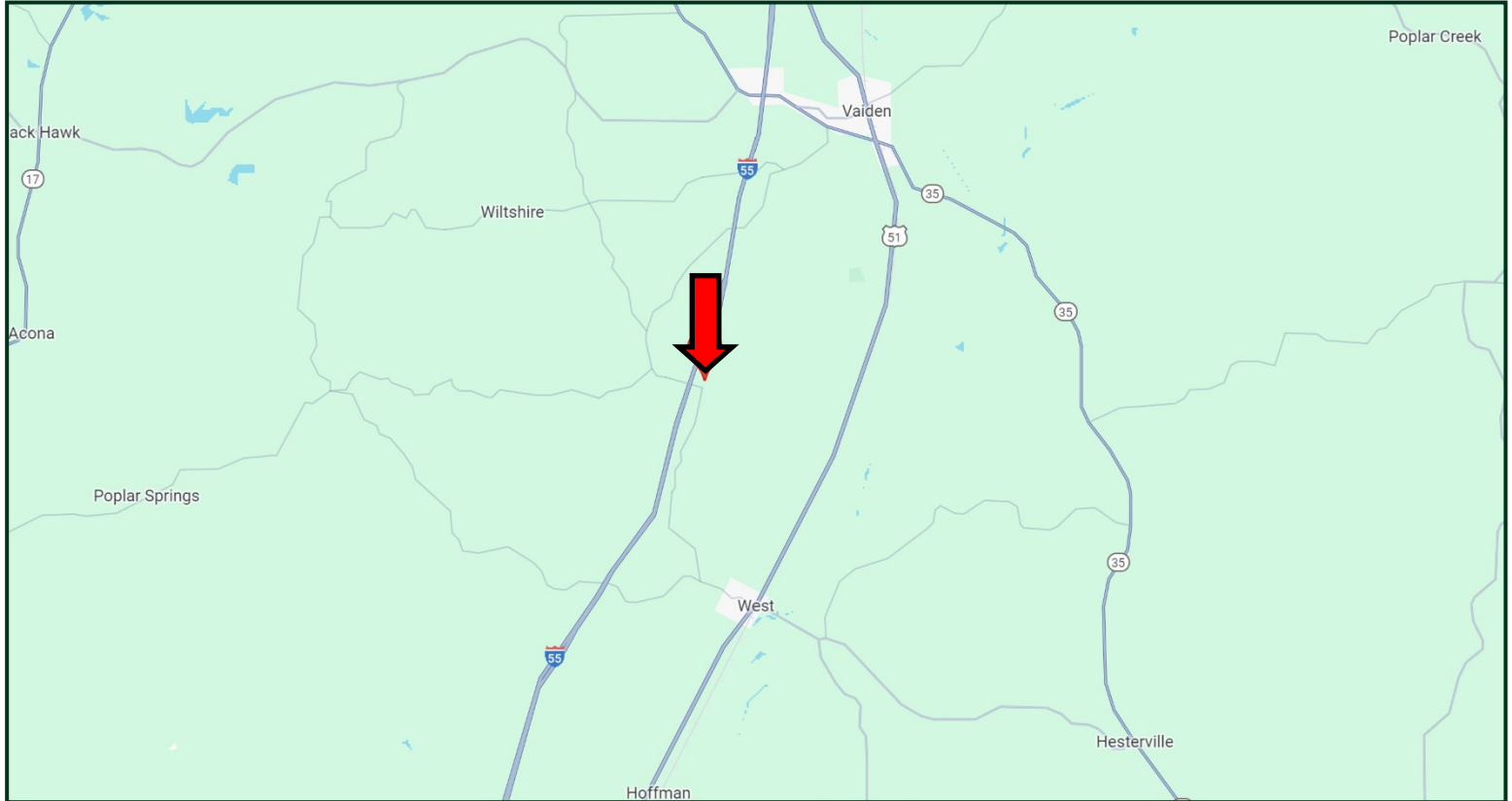
TomSmithLandandHomes.com



Expect More. Get More.



Directional Map



Directions from I-55 North in West, MS: Take exit 164 toward Emory Rd. Keep right at the fork and follow the signs for West, MS. Merge onto Emory Rd. and travel 2.1 miles. Turn left onto Race Track Rd. and travel 1.9 miles. Continue onto West Blvd. and travel 2.2 miles. The property will be on the right. [GOOGLE MAP LINK](#)



COLBY
WATSON

REALTOR®

Office: 601.898.2772

Cell: 601.668.8096

Colby@TomSmithLand.com



Expect More. Get More.

A Real Estate Expert You Can Trust

TomSmithLandandHomes.com

Information is believed to be accurate but not guaranteed.

