

2± ACRE HOMESITE IN OKTIBBEHA COUNTY, MS



\$30,000

Are you looking for a great lot in a quiet town? Look no further! This 2+/- acre lot in Oktibbeha County, MS, located on the corner of Louisville Rd and Craig Springs Rd in Sturgis, is what you are looking for. This lot is on 16th-section land and is under a long-term lease. Houses, rentals, and businesses are all potential uses for this lot. All utilities, including city sewer, are ready for hookup, and this property is seconds from all that Sturgis has to offer! Starkville and Mississippi State University are just 15 minutes away, Louisville is 27 minutes away, and Ackerman is just 12 minutes away. Additional Acreage Available. To schedule a private showing, call or text Walker!



**WALKER
TRANUM**
REALTOR®

Office: 662.268.6333

Cell: 662.769.1442

Walker@TomSmithHomes.com



Expect More. Get More.

A Real Estate Expert You Can Trust

TomSmithLandandHomes.com

Information is believed to be accurate but not guaranteed.





A Real Estate Expert
You Can Trust!

WALKER TRANUM

REALTOR®

O: 662.268.6333 C: 662.769.1442

Walker@TomSmithHomes.com

TomSmithLandandHomes.com



Expect More. Get More.



Information is believed to be accurate but not guaranteed.

Aerial Map



Click [Here](#) for an Interactive Map Link

A Real Estate Expert
You Can Trust!

WALKER TRANUM

REALTOR®

O: 662.268.6333 C: 662.769.1442

Walker@TomSmithHomes.com

TomSmithLandandHomes.com

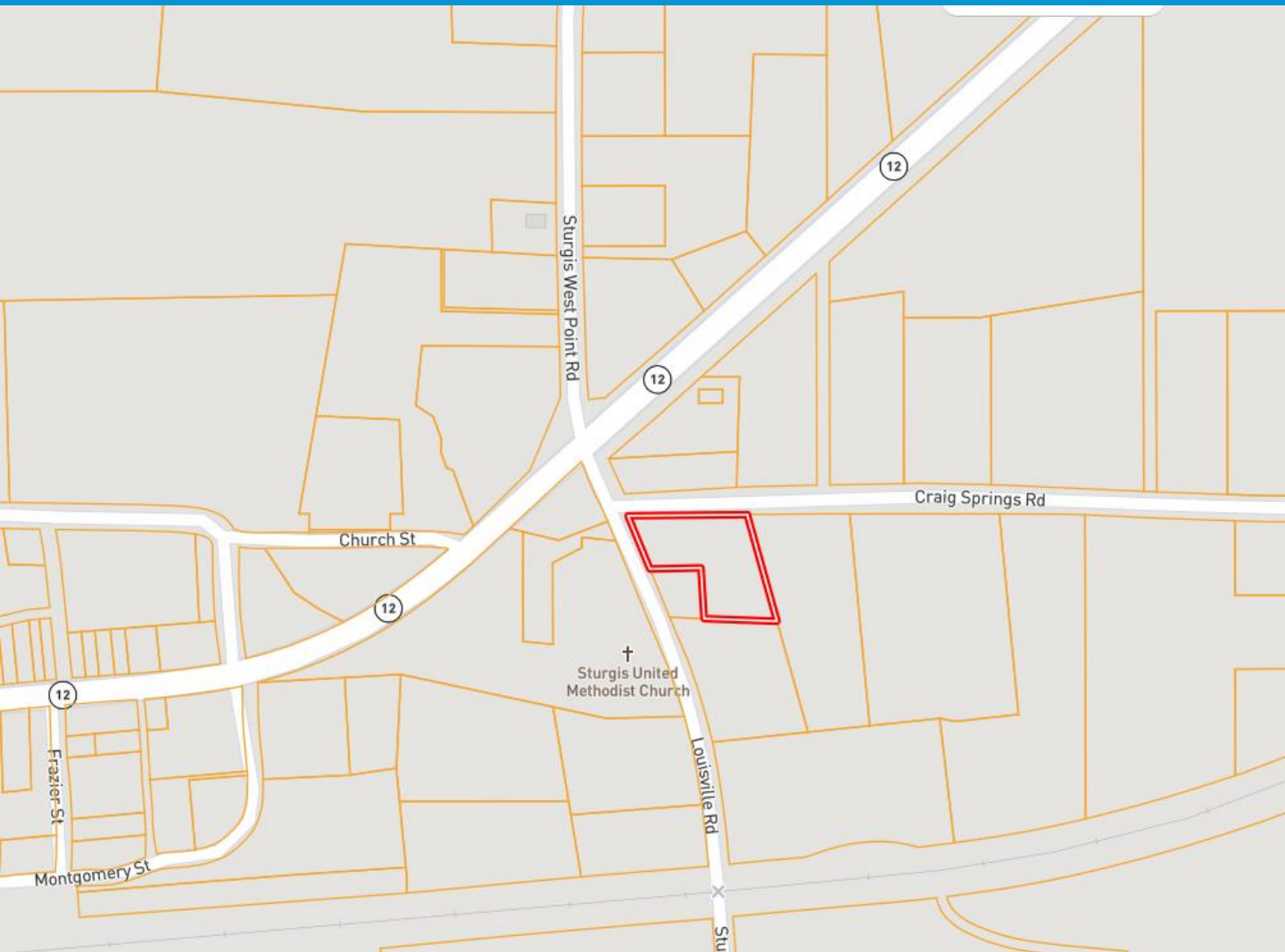


Expect More. Get More.



Information is believed to be accurate but not guaranteed.

Ownership Map



A Real Estate Expert
You Can Trust!

WALKER TRANUM

REALTOR®

O: 662.268.6333 C: 662.769.1442

Walker@TomSmithHomes.com

TomSmithLandandHomes.com

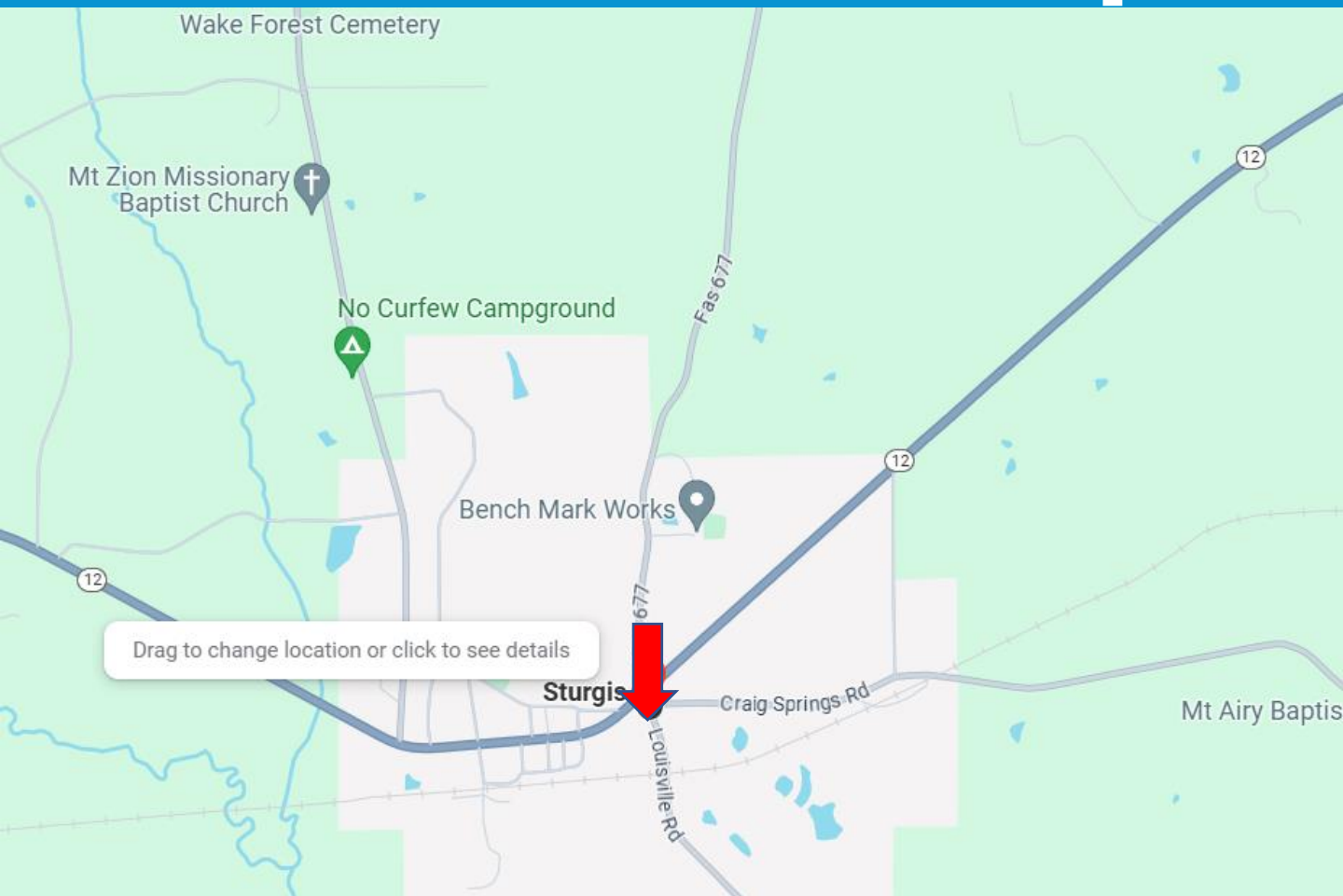


Expect More. Get More.



Information is believed to be accurate but not guaranteed.

Directional Map



Directions from Highway 12 and Louisville Road in Sturgis, MS: Travel Louisville Sturgis Rd for 0.1 mile. Turn left onto Craig Springs Rd. After 300 feet the property will be on your left at the corner of Louisville Sturgis Road and Craig Springs Road. [Google Map Link](#)



**WALKER
TRANUM**

REALTOR®

Office: 662.268.6333

Cell: 662.769.1442

Walker@TomSmithHomes.com



Expect More. Get More.

A Real Estate Expert You Can Trust

TomSmithLandandHomes.com

Information is believed to be accurate but not guaranteed.

