

# 11.6± ACRE PROPERTY ON THE MS GULF COAST HARRISON COUNTY, MS



## \$90,000

Are you looking for the perfect place to build your dream home near Gulfport, MS? Look no further! This property on River Road offers all the utilities you need and plenty of privacy, thanks to its wooded setting. With approximately 1,600 feet of frontage on the Biloxi River, you'll have direct access to Biloxi and the coast by boat. Enjoy the ideal balance of seclusion and convenience with its close proximity to Gulfport and the Mississippi Gulf Coast. To schedule a private showing, call or text Brady or Walker today!



**WALKER TRANUM**  
REALTOR®

O: 662.268.6333 | C: 662.769.1442  
Walker@TomSmithHomes.com



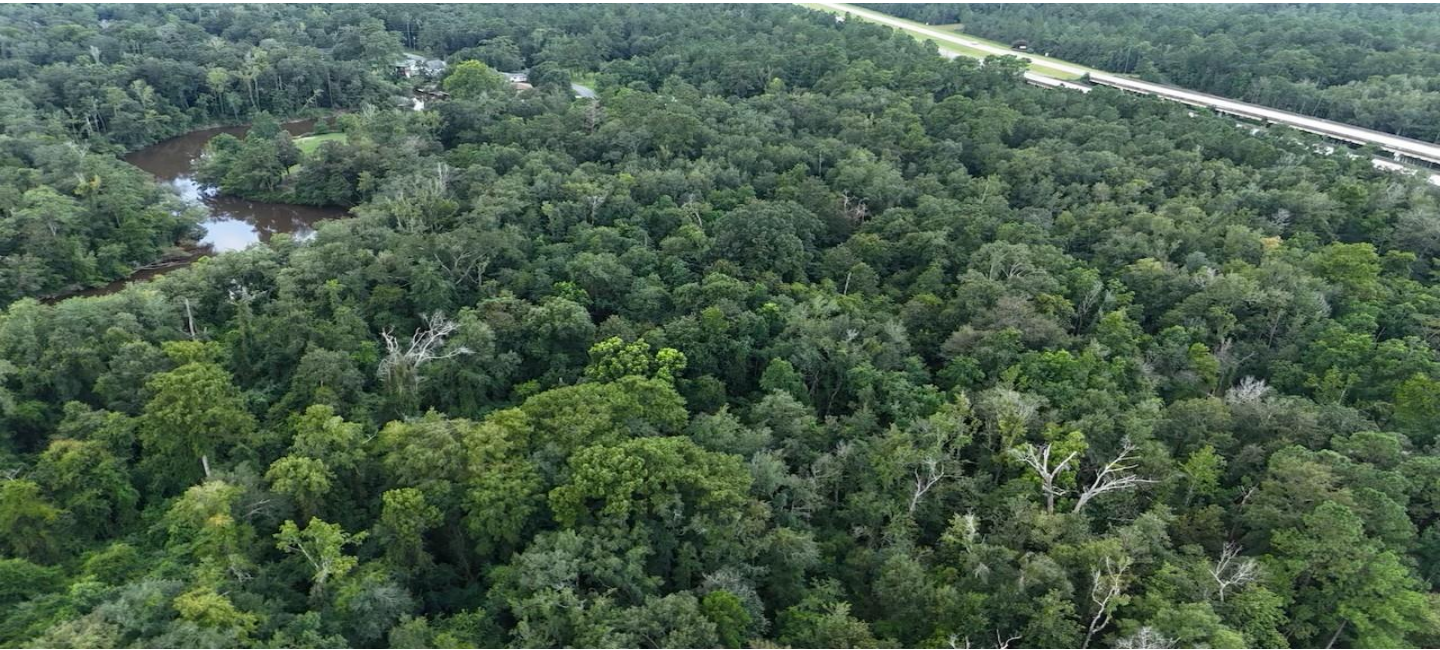
**BRADY RICHARDSON**  
REALTOR®

O: 601.898.2772 | C: 662.418.8791  
Brady@TomSmithLand.com

**TomSmithLandandHomes.com**

Information is believed to be accurate but not guaranteed.





**WALKER TRANUM**  
REALTOR®

O: 662.268.6333 | C: 662.769.1442  
Walker@TomSmithHomes.com



**BRADY RICHARDSON**  
REALTOR®

O: 601.898.2772 | C: 662.418.8791  
Brady@TomSmithLand.com

**TomSmithLandandHomes.com**

Information is believed to be accurate but not guaranteed.



# Aerial Map



Click [Here](#) for an Interactive Map Link



**WALKER TRANUM**  
REALTOR®

O: 662.268.6333 | C: 662.769.1442  
Walker@TomSmithHomes.com



Expect More. Get More.



**BRADY RICHARDSON**  
REALTOR®

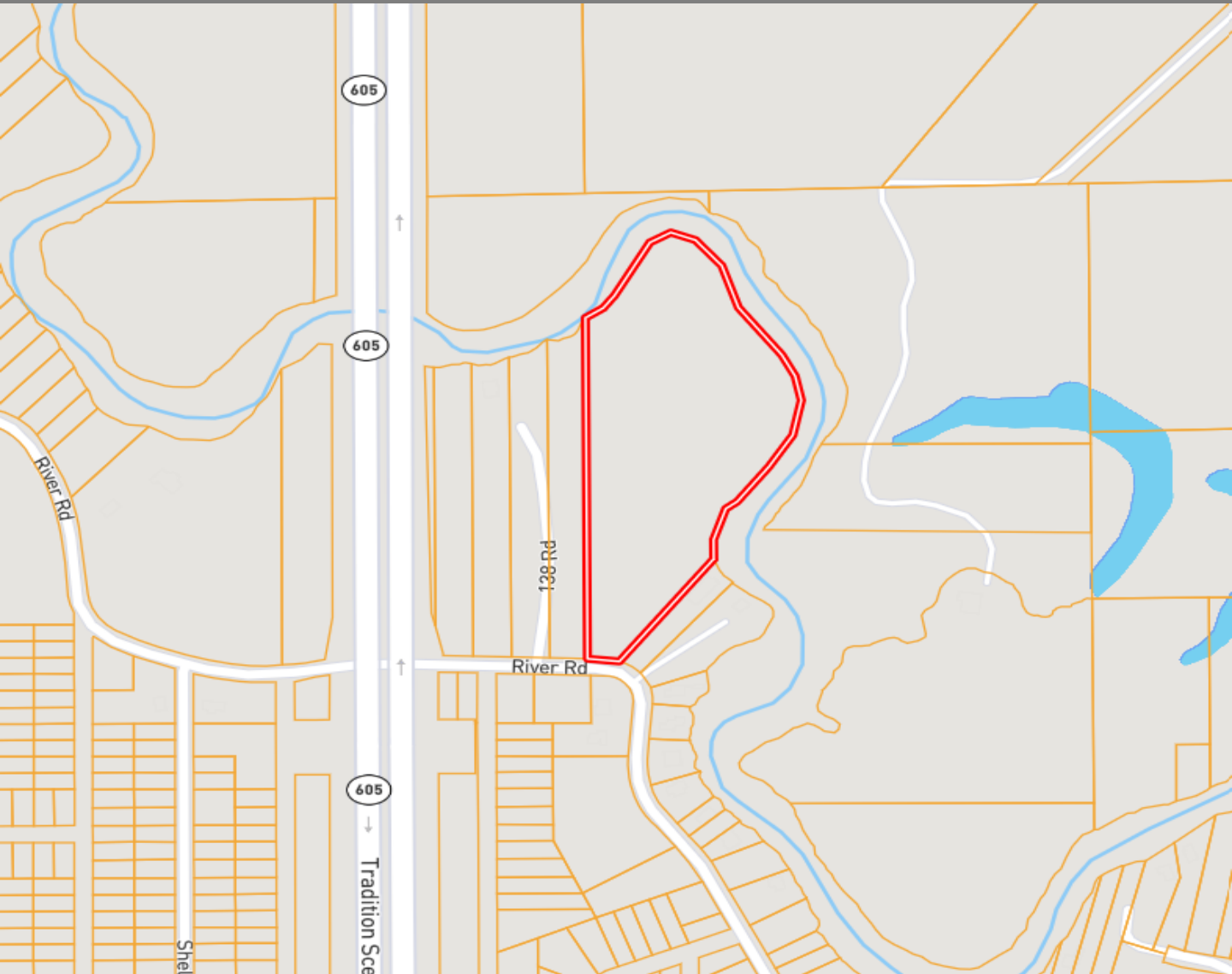
O: 601.898.2772 | C: 662.418.8791  
Brady@TomSmithLand.com

**TomSmithLandandHomes.com**

Information is believed to be accurate but not guaranteed.



# Ownership Map



**WALKER TRANUM**  
REALTOR®

O: 662.268.6333 | C: 662.769.1442  
Walker@TomSmithHomes.com



Expect More. Get More.



**BRADY RICHARDSON**  
REALTOR®

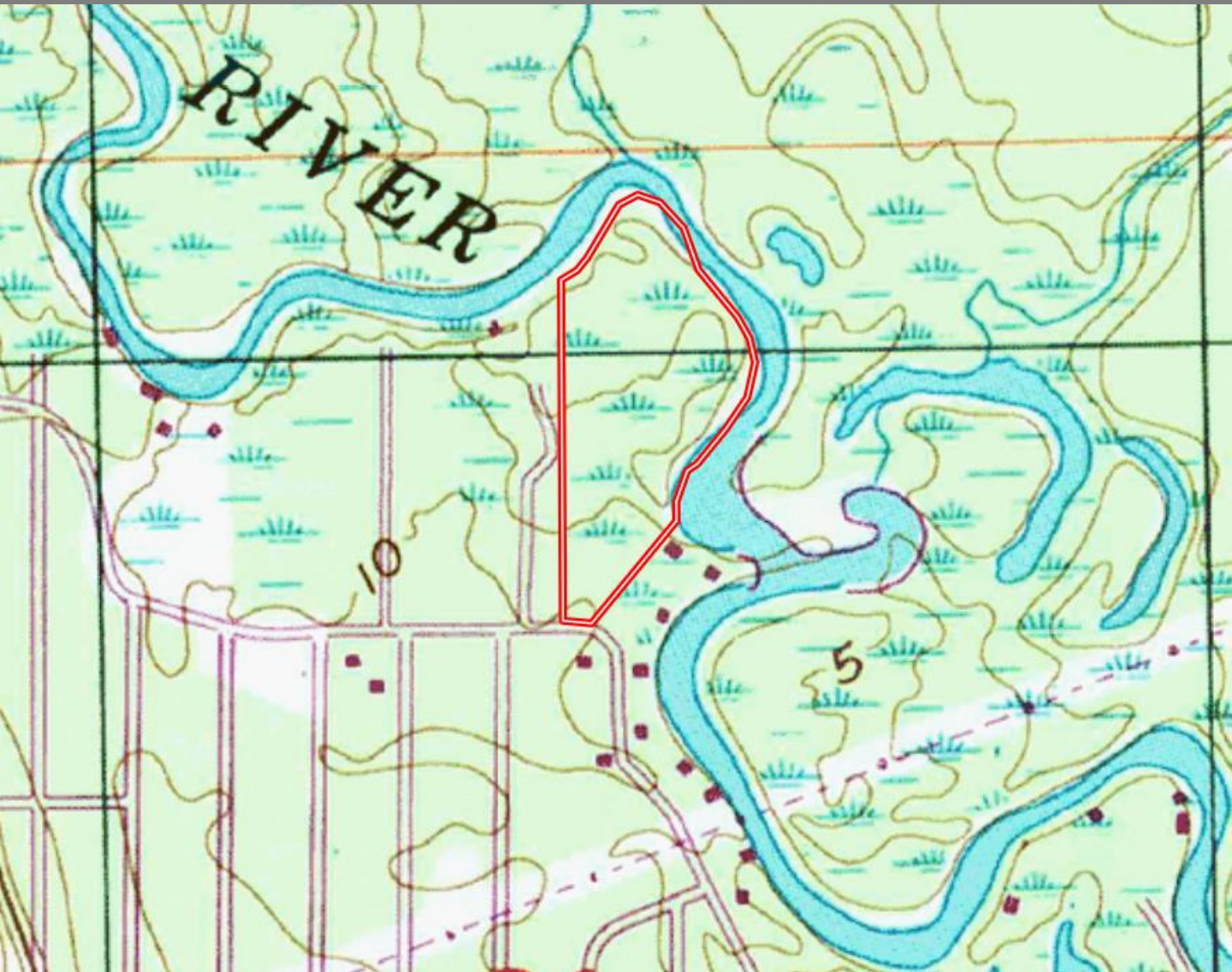
O: 601.898.2772 | C: 662.418.8791  
Brady@TomSmithLand.com

**TomSmithLandandHomes.com**

Information is believed to be accurate but not guaranteed.



# Topography Map



**WALKER TRANUM**  
REALTOR®

O: 662.268.6333 | C: 662.769.1442  
Walker@TomSmithHomes.com



Expect More. Get More.



**BRADY RICHARDSON**  
REALTOR®

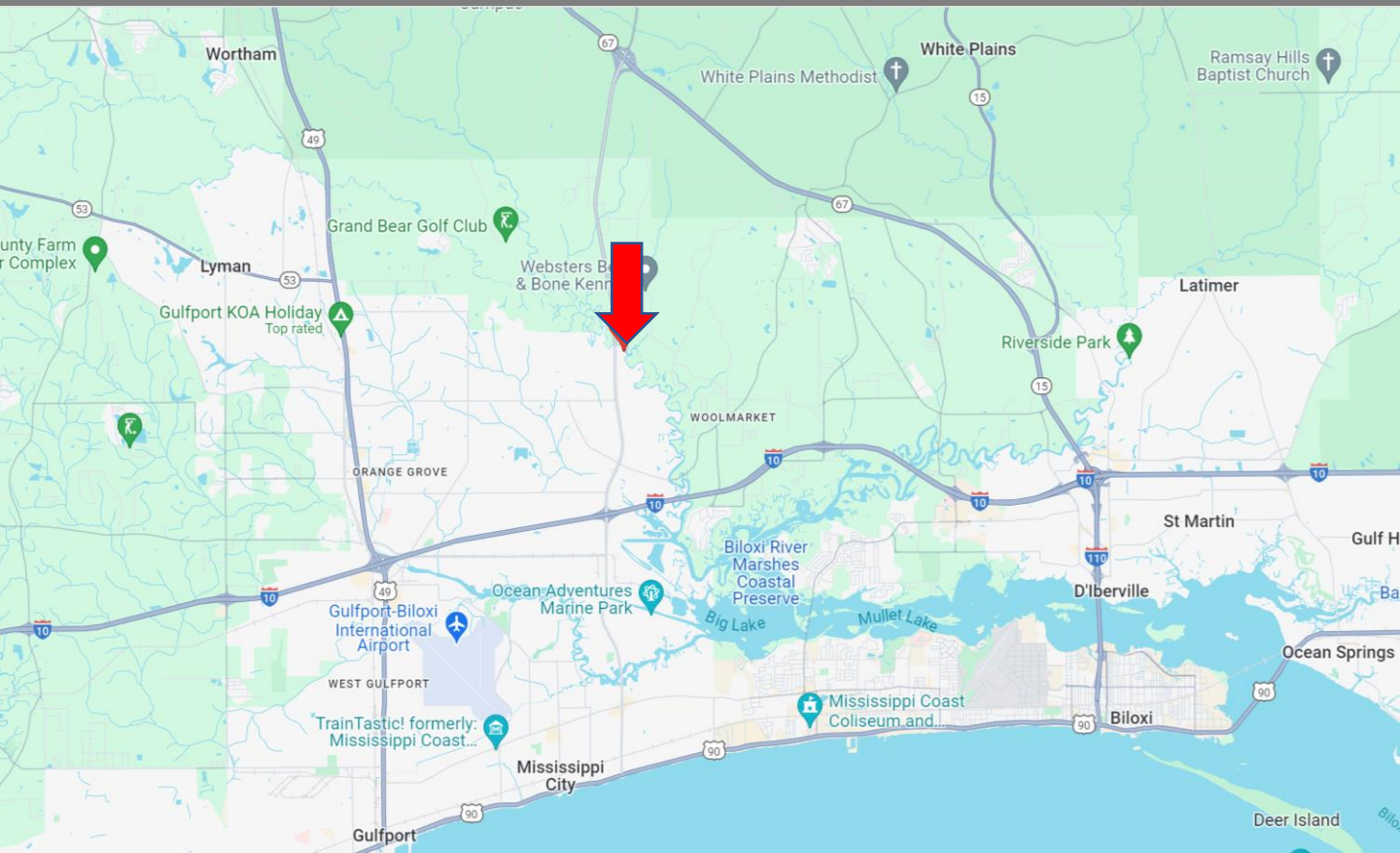
O: 601.898.2772 | C: 662.418.8791  
Brady@TomSmithLand.com

**TomSmithLandandHomes.com**

Information is believed to be accurate but not guaranteed.

2011-2024  
BEST  
RECRUITING

# Directional Map



**Directions from Hwy 49 and I-10 in Gulfport, MS:** Merge onto I-10 E towards Biloxi/Mobile and travel 3.9 miles. Take exit 38 toward Cowan Rd/Bernard Bayou Industrial Dist/Lorraine. Turn left onto Lorraine Rd/Hwy 605 and travel 2 miles. Turn left onto Oneal Road, then immediately turn right onto Sheldon Street and travel 0.7 miles. Turn right onto River Road. After 0.1 mile, the property will be on your left. [Google Map Link](#)



**WALKER TRANUM**  
REALTOR®

O: 662.268.6333 | C: 662.769.1442  
Walker@TomSmithHomes.com



Expect More. Get More.



**BRADY RICHARDSON**  
REALTOR®

O: 601.898.2772 | C: 662.418.8791  
Brady@TomSmithLand.com