

# Winston County Home on 12± Acres

6434 Ellison Ridge Road, Louisville, MS 39339



**\$165,000**

Discover the perfect blend of comfort and space with this Winston County home. This 3-bedroom, 1-bathroom, 1,190 sq ft home is on a generous 12± acre lot and features a beautifully maintained yard, ideal for outdoor activities and relaxation. Conveniently located just 12 miles from Louisville and 22 miles from Macon, you'll enjoy the tranquility of rural living with easy access to nearby towns. Take advantage of this opportunity to own a slice of country paradise!



**TYLER  
KILGORE**  
REALTOR®

Office: 662.268.6333

Cell: 601.562.0688

Tyler@TomSmithLand.com



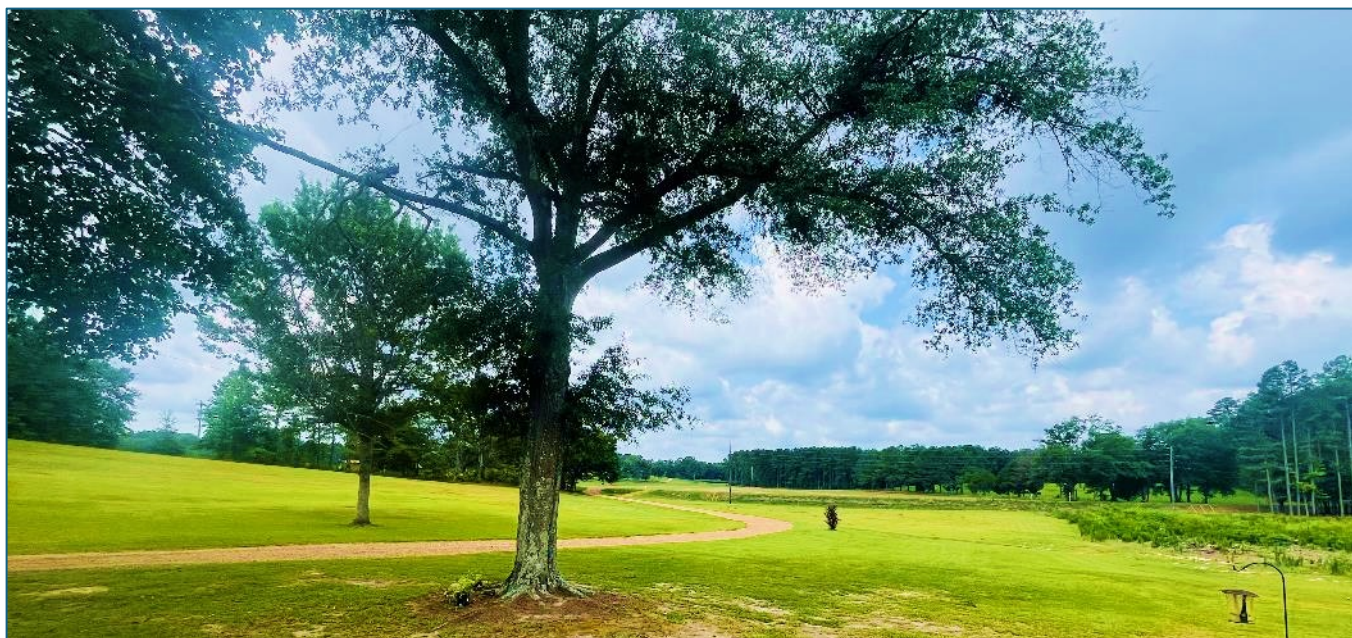
Expect More. Get More.

**A Real Estate Expert You Can Trust**

TomSmithLandandHomes.com

Information is believed to be accurate but not guaranteed.





## A Real Estate Expert *You Can Trust!*

**TYLER KILGORE**  
REALTOR®

O: 662.268.6333 C: 601.562.0688

Tyler@TomSmithLand.com

TomSmithLandandHomes.com



Expect More. Get More.





**A Real Estate Expert**  
*You Can Trust!*

**TYLER KILGORE**  
REALTOR®

O: 662.268.6333 C: 601.562.0688

Tyler@TomSmithLand.com

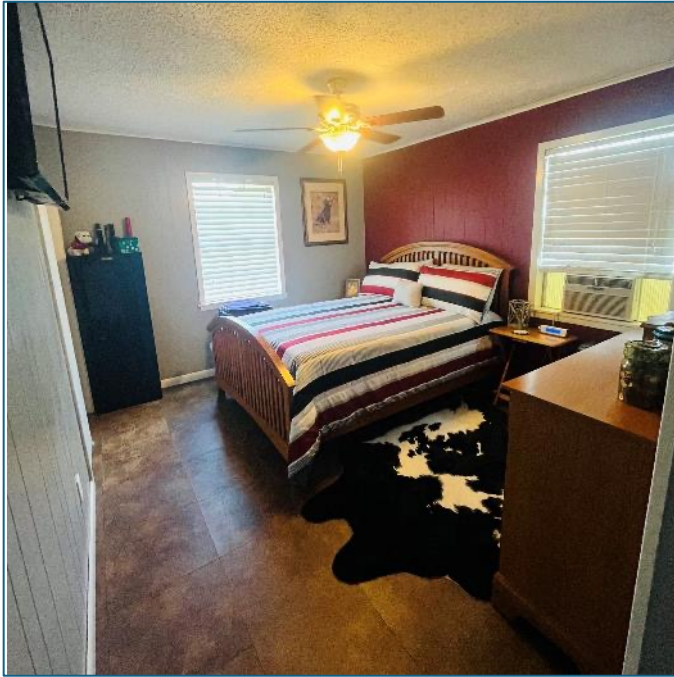
TomSmithLandandHomes.com



Expect More. Get More.



Information is believed to be accurate but not guaranteed.



# A Real Estate Expert You Can Trust!

**TYLER KILGORE**  
REALTOR®

O: 662.268.6333 C: 601.562.0688

Tyler@TomSmithLand.com

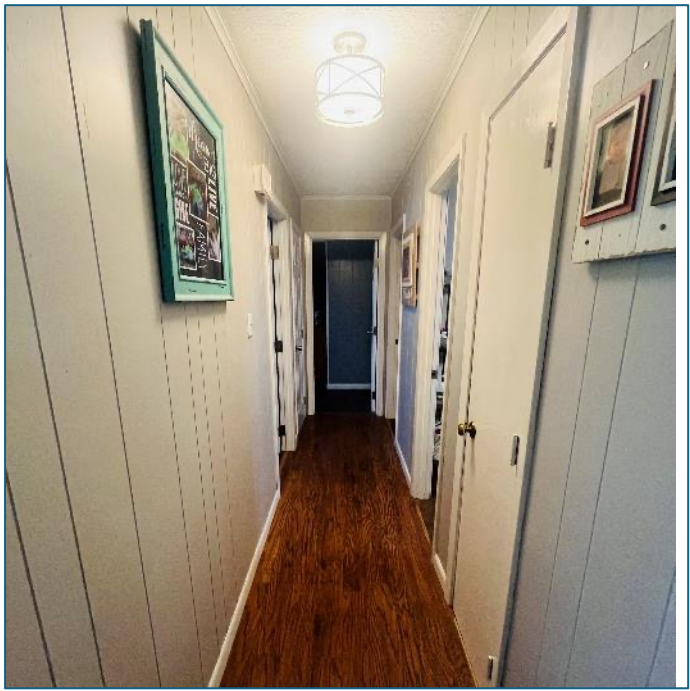
TomSmithLandandHomes.com



Expect More. Get More.



Information is believed to be accurate but not guaranteed.



**A Real Estate Expert**  
*You Can Trust!*

**TYLER KILGORE**  
REALTOR®

O: 662.268.6333 C: 601.562.0688

Tyler@TomSmithLand.com

TomSmithLandandHomes.com

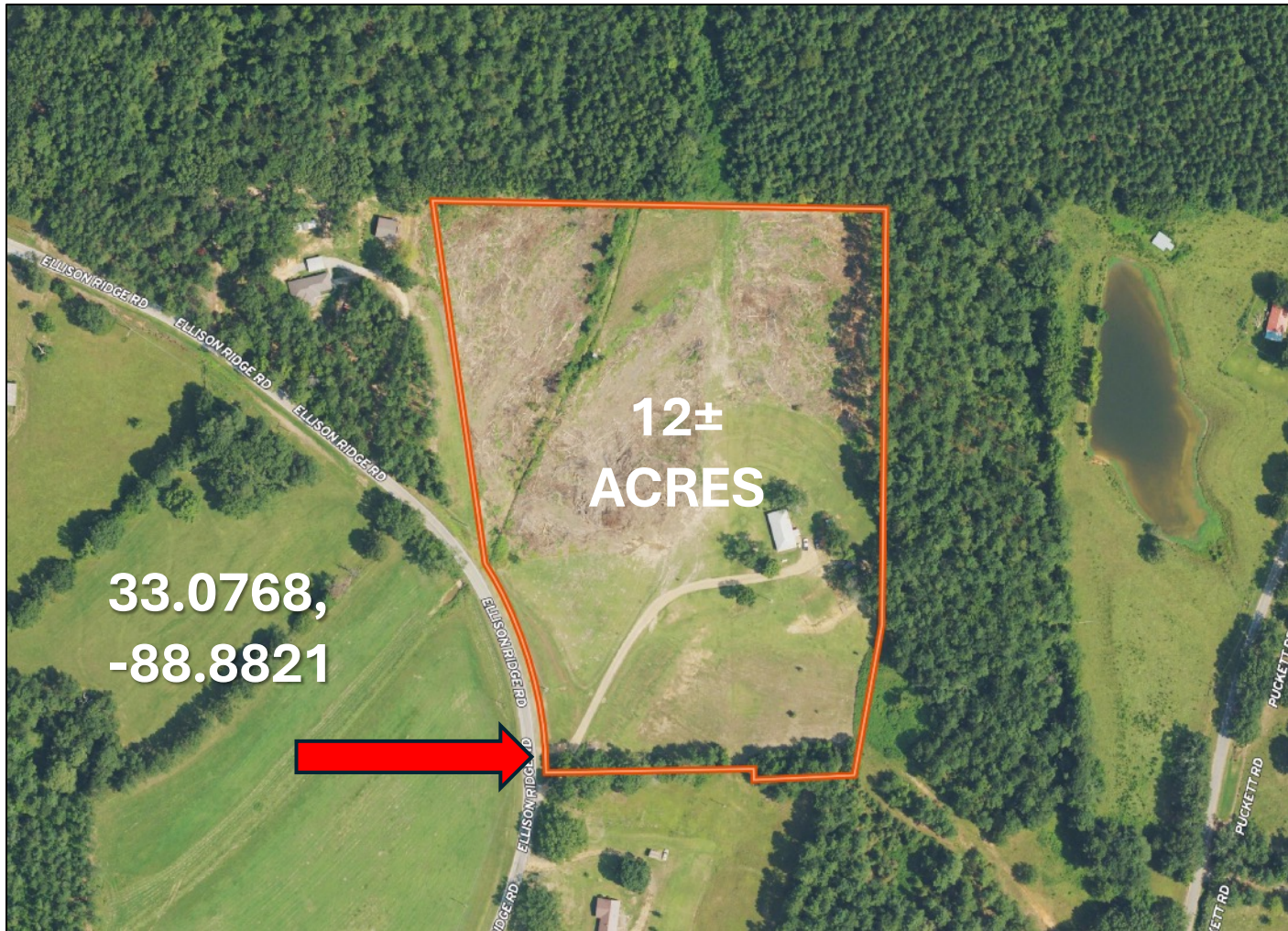


Expect More. Get More.



Information is believed to be accurate but not guaranteed.

# AERIAL MAP



[INTERACTIVE MAP LINK](#)

**A Real Estate Expert**  
*You Can Trust!*

**TYLER KILGORE**  
REALTOR®

O: 662.268.6333 C: 601.562.0688

Tyler@TomSmithLand.com

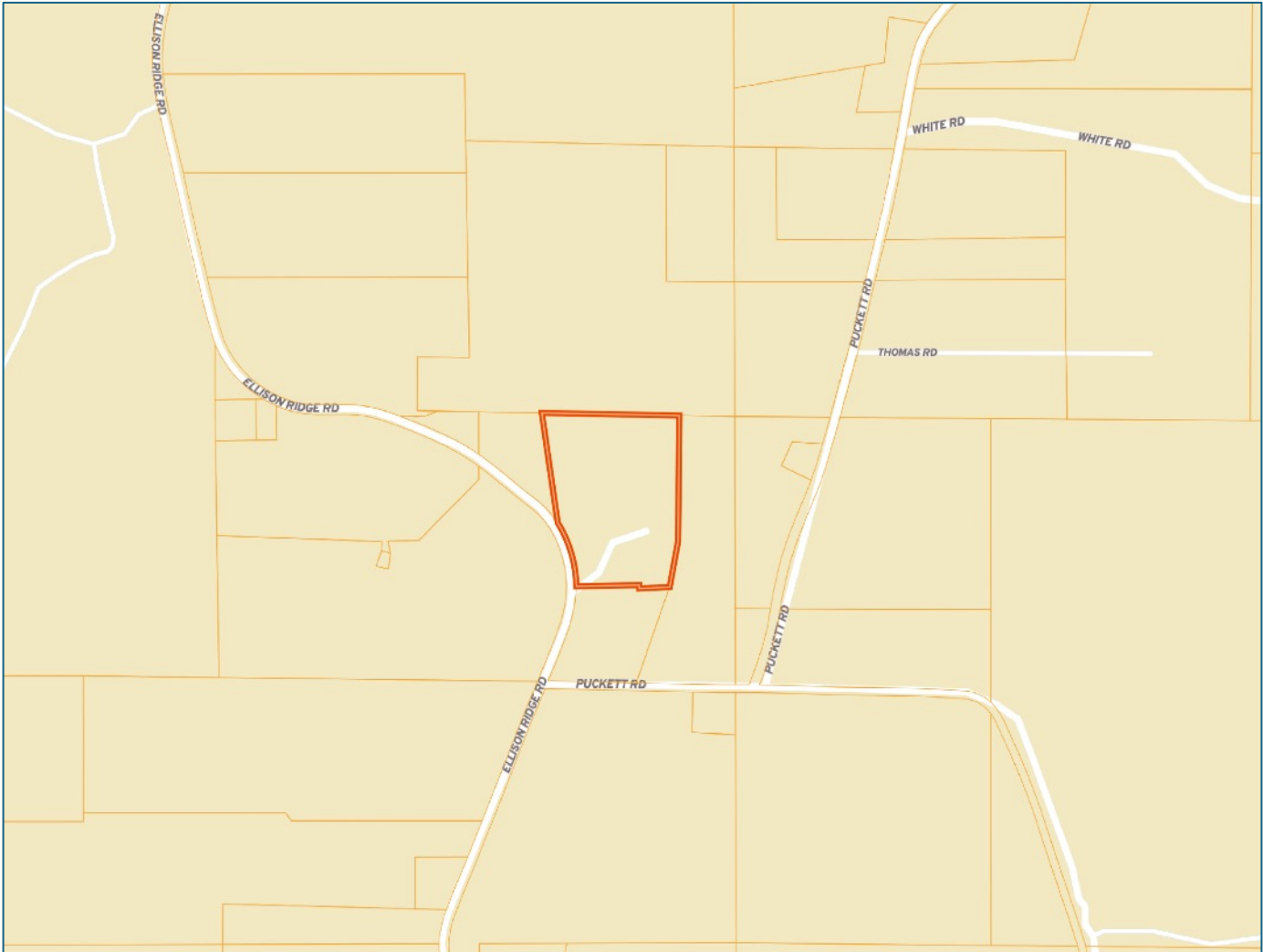
TomSmithLandandHomes.com



Expect More. Get More.



# OWNERSHIP MAP



**A Real Estate Expert**  
*You Can Trust!*

**TYLER KILGORE**  
REALTOR®

O: 662.268.6333 C: 601.562.0688

Tyler@TomSmithLand.com

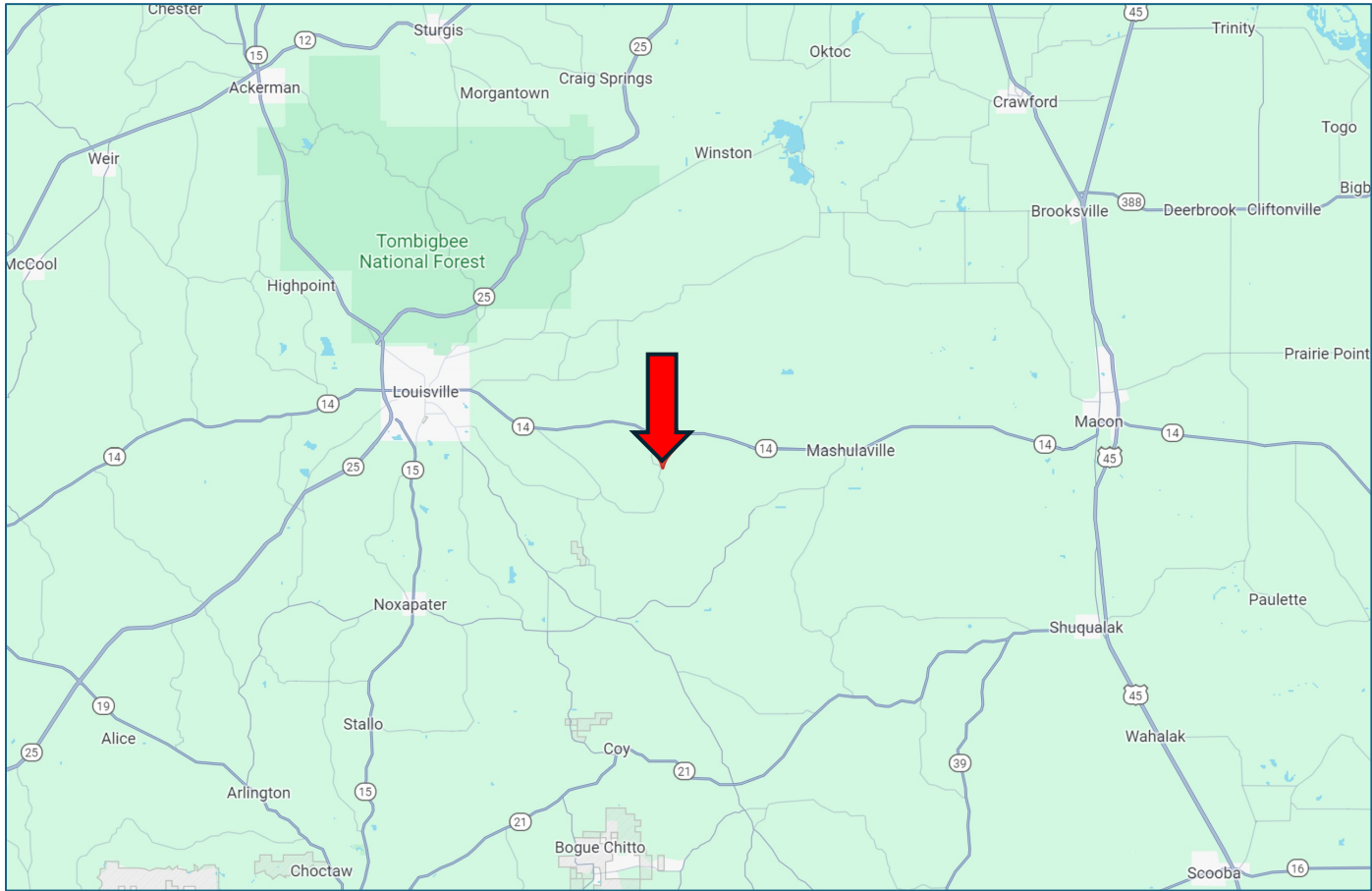
TomSmithLandandHomes.com



Expect More. Get More.



# DIRECTIONAL MAP



**From the intersection of MS-14 E and Ellison Ridge Rd: Travel Ellison Ridge Road for 1.8 miles. The property will be on your left. [GOOGLE MAP LINK](#)  
6434 Ellison Ridge Road, Louisville, MS 39339**



**TYLER  
KILGORE**  
REALTOR®

Office: 662.268.6333

Cell: 601.562.0688

Tyler@TomSmithLand.com



Expect More. Get More.

**A Real Estate Expert You Can Trust**

TomSmithLandandHomes.com

Information is believed to be accurate but not guaranteed.

