

16.1± ACRE PROPERTY ON THE MS GULF COAST HARRISON COUNTY, MS



\$130,000

Are you dreaming of building your perfect home on the outskirts of town? Look no further than this 16.1± acre property in Harrison County, MS. Located just minutes from Pass Christian, Gulfport, and the beautiful Mississippi Gulf coast, this property offers 450 feet of road frontage on Ellis Road. With all utilities available at the road and over 2,500 feet of frontage on the Wolf River, you'll have direct access to Bay Saint Louis. To schedule a private showing, call or text Brady or Walker!



WALKER TRANUM
REALTOR®

O: 662.268.6333 | C: 662.769.1442
Walker@TomSmithHomes.com



Expect More. Get More.



BRADY RICHARDSON
REALTOR®

O: 601.898.2772 | C: 662.418.8791
Brady@TomSmithLand.com

TomSmithLandandHomes.com

Information is believed to be accurate but not guaranteed.





WALKER TRANUM
REALTOR®

O: 662.268.6333 | C: 662.769.1442
Walker@TomSmithHomes.com



Expect More. Get More.



BRADY RICHARDSON
REALTOR®

O: 601.898.2772 | C: 662.418.8791
Brady@TomSmithLand.com

TomSmithLandandHomes.com

Information is believed to be accurate but not guaranteed.



Aerial Map



Click [Here](#) for an Interactive Map Link



WALKER TRANUM
REALTOR®

O: 662.268.6333 | C: 662.769.1442
Walker@TomSmithHomes.com



BRADY RICHARDSON
REALTOR®

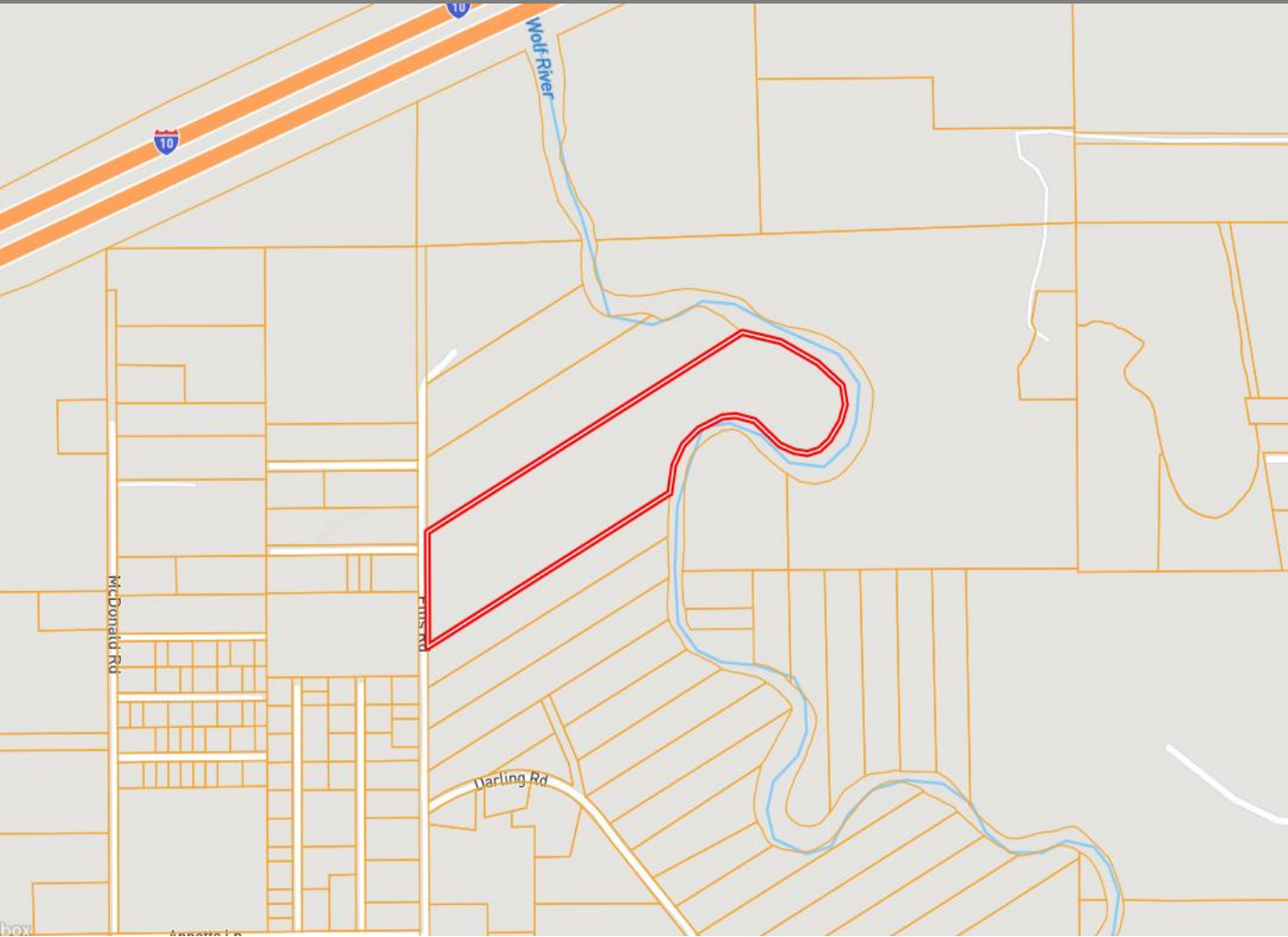
O: 601.898.2772 | C: 662.418.8791
Brady@TomSmithLand.com

TomSmithLandandHomes.com

Information is believed to be accurate but not guaranteed.



Ownership Map



WALKER TRANUM
REALTOR®

O: 662.268.6333 | C: 662.769.1442
Walker@TomSmithHomes.com



Expect More. Get More.



BRADY RICHARDSON
REALTOR®

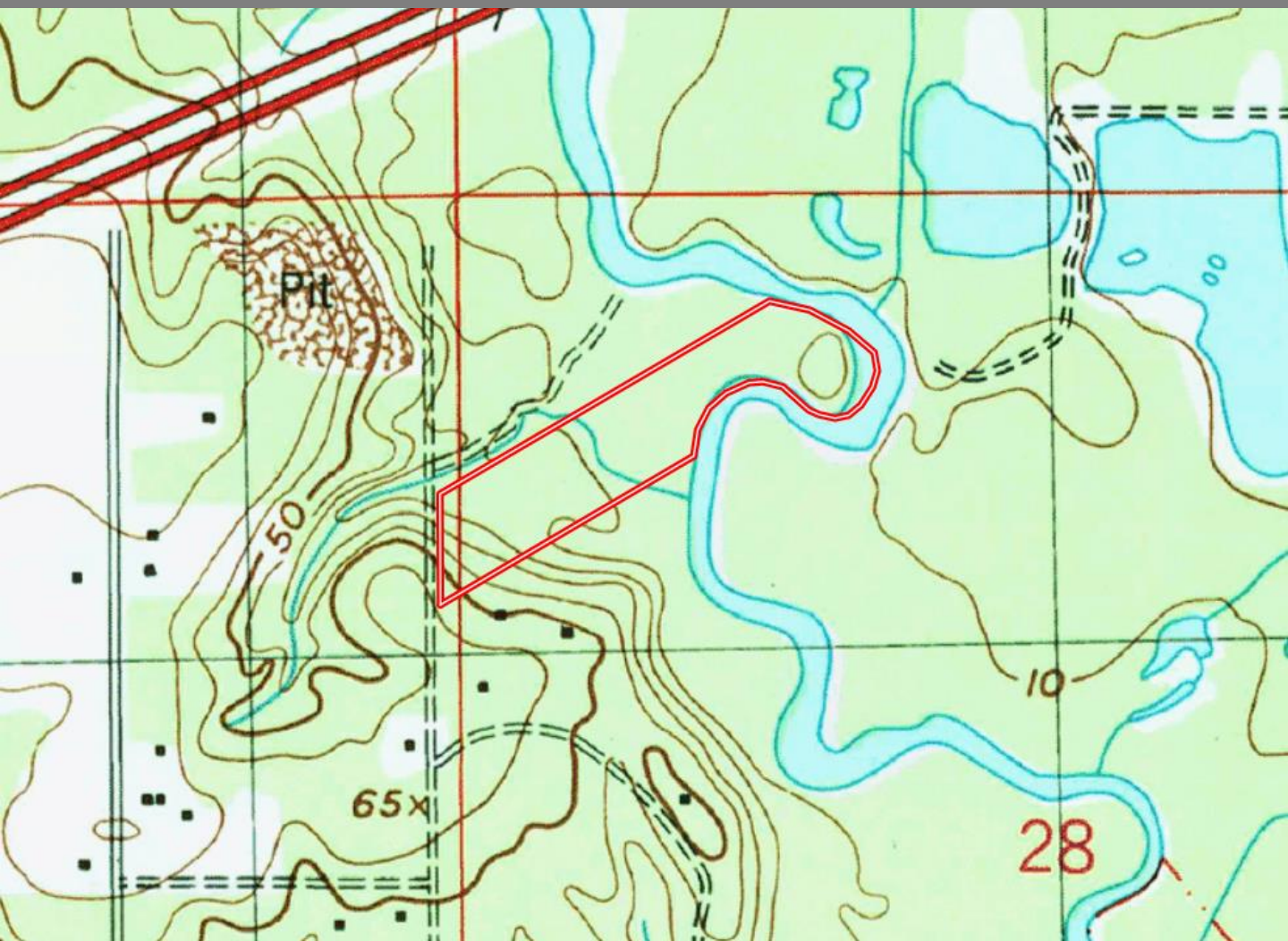
O: 601.898.2772 | C: 662.418.8791
Brady@TomSmithLand.com

TomSmithLandandHomes.com

Information is believed to be accurate but not guaranteed.



Topography Map



WALKER TRANUM
REALTOR®

O: 662.268.6333 | C: 662.769.1442
Walker@TomSmithHomes.com



Expect More. Get More.



BRADY RICHARDSON
REALTOR®

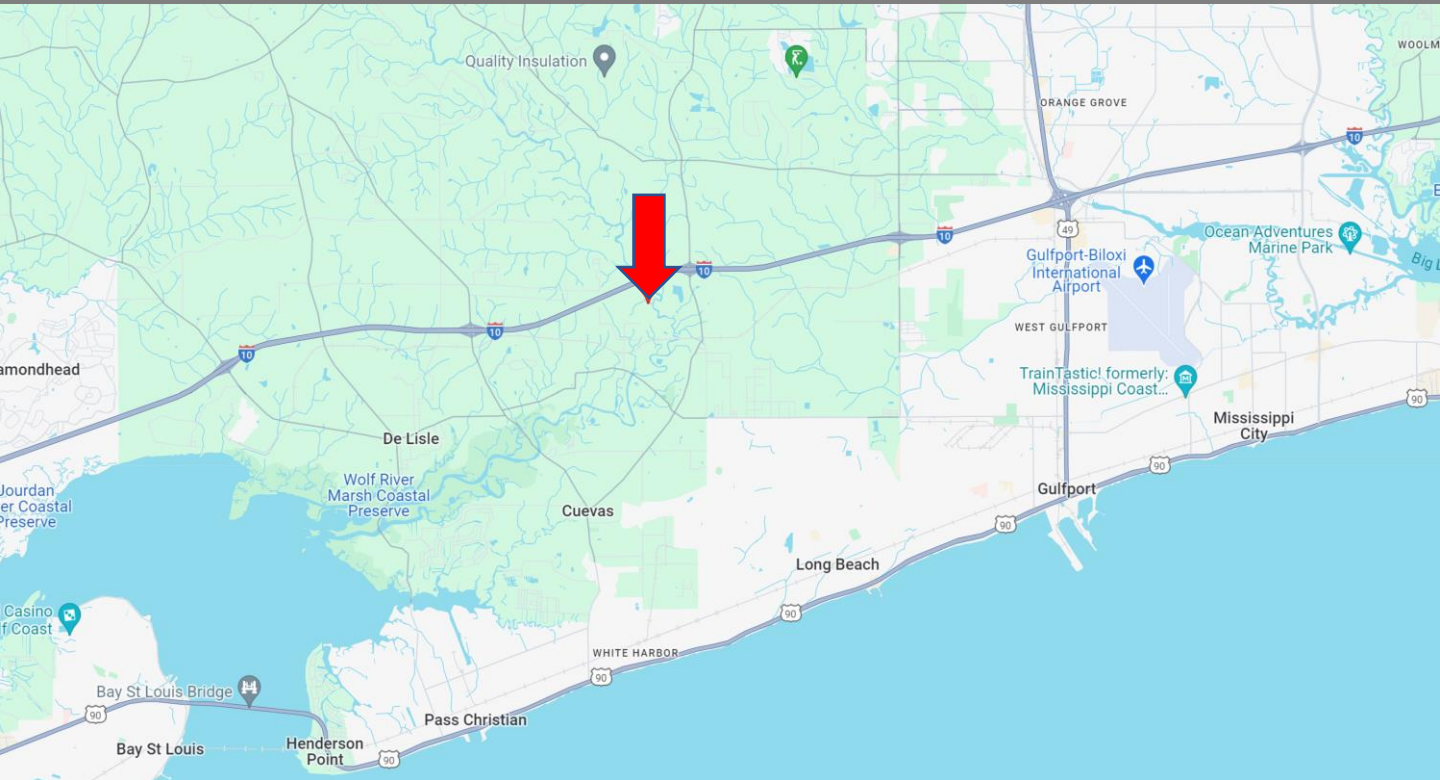
O: 601.898.2772 | C: 662.418.8791
Brady@TomSmithLand.com

TomSmithLandandHomes.com

Information is believed to be accurate but not guaranteed.



Directional Map



Directions from Hwy 49 and I-10 in Gulfport, MS: Merge onto I-10 W towards New Orleans and travel 5.8 miles. Take exit 28 toward Long Beach/Pass Christian. Turn left onto County Farm Rd. and travel 1.2 miles. Turn right onto Red Creek Rd. and travel 1.2 miles. Turn right onto Bells Ferry Rd. and travel 1 mile. Turn right onto McDonald Road and travel 0.5 miles. Turn left onto Ellis Road. After 0.6 miles, the property will be on your right. [Google Map Link](#)



WALKER TRANUM
REALTOR®

O: 662.268.6333 | C: 662.769.1442
Walker@TomSmithHomes.com



Expect More. Get More.



BRADY RICHARDSON
REALTOR®

O: 601.898.2772 | C: 662.418.8791
Brady@TomSmithLand.com

TomSmithLandandHomes.com

Information is believed to be accurate but not guaranteed.

