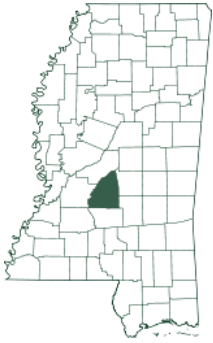




Expect More. Get More.

# Prime Timber Tract

**44.7± ACRES IN RANKIN COUNTY, MS**



**\$495,425**

Look at this prime timber tract for sale in Rankin County, offering an exceptional opportunity for investment or development. Situated in the highly coveted Pisgah School District, this 44.7+/- acre property boasts a range of desirable features that make it an attractive prospect for various purposes. With water and electric utilities available on the road, this tract provides convenience and accessibility for potential buyers. This timber tract boasts an impressive amount paved road frontage. The property offers excellent visibility and easy access, enhancing its appeal for development opportunities. The property comprises a diverse mix of planted pine stands. It features approximately 14.1+/- acres of 2-year-old pines and 25 +/- acres of 3-year-old pines. Call David Belden or Dale Wilds today for your private showing!



**DALE WILDS**  
REALTOR®

O: 601.898.2772 | C: 662.715.7109  
Dale@TomSmithLand.com



Expect More. Get More.



**DAVID BELDEN**  
ALC®, REALTOR®

O: 601.898.2772 | C: 601.415.3884  
DBelden@TomSmithLand.com

**TomSmithLandandHomes.com**

Information is believed to be accurate but not guaranteed.







**DALE WILDS**  
REALTOR®

O: 601.898.2772 | C: 662.715.7109  
Dale@TomSmithLand.com



Expect More. Get More.



**DAVID BELDEN**  
ALC®, REALTOR®

O: 601.898.2772 | C: 601.415.3884  
DBelden@TomSmithLand.com



# AERIAL MAP



[CLICK HERE FOR THE LANDID INTERACTIVE MAP](#)



**DALE WILDS**  
REALTOR®

O: 601.898.2772 | C: 662.715.7109  
Dale@TomSmithLand.com



Expect More. Get More.

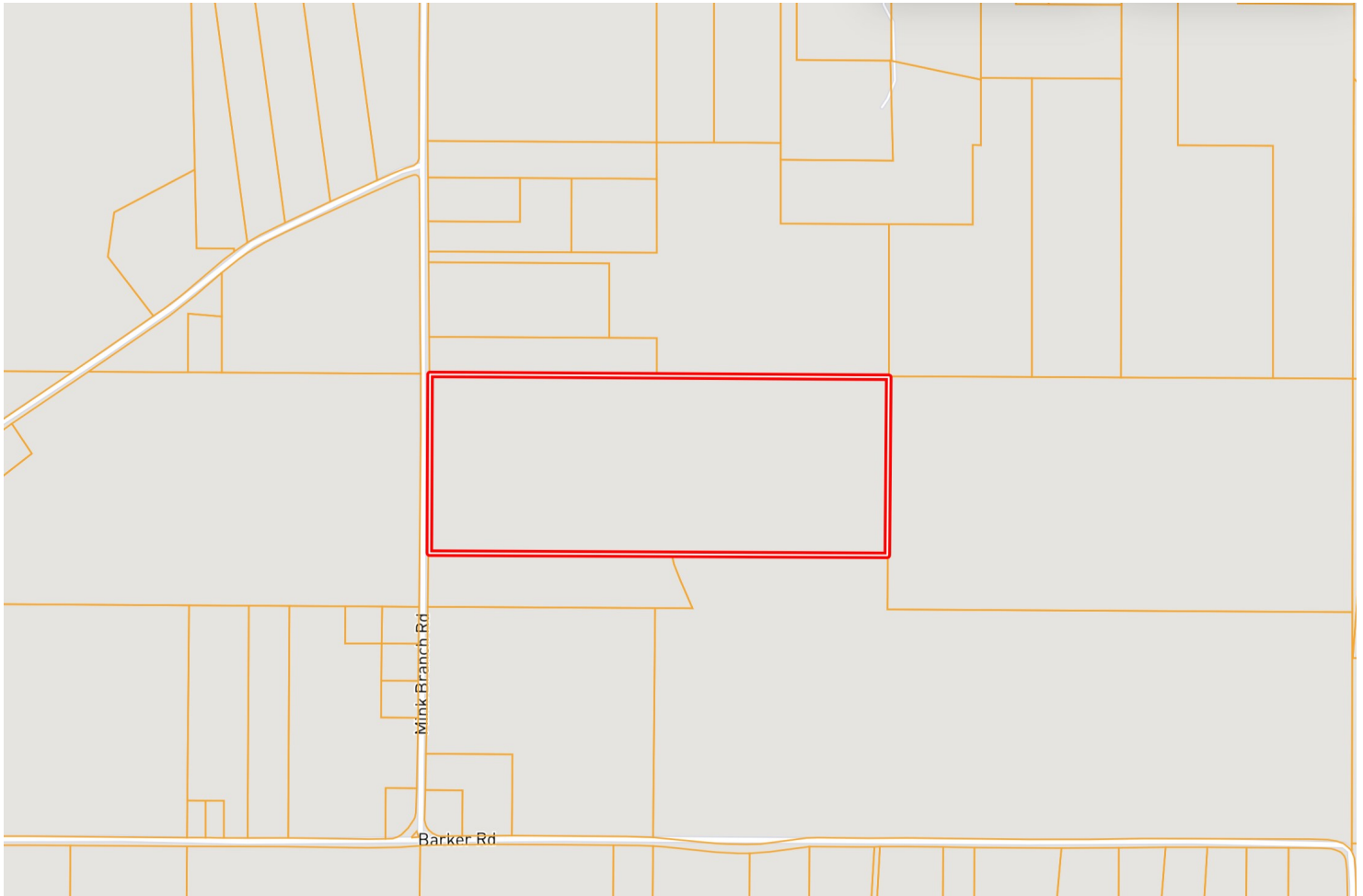


**DAVID BELDEN**  
ALC®, REALTOR®

O: 601.898.2772 | C: 601.415.3884  
DBelden@TomSmithLand.com



# OWNERSHIP MAP



**DALE WILDS**  
REALTOR®

O: 601.898.2772 | C: 662.715.7109  
Dale@TomSmithLand.com



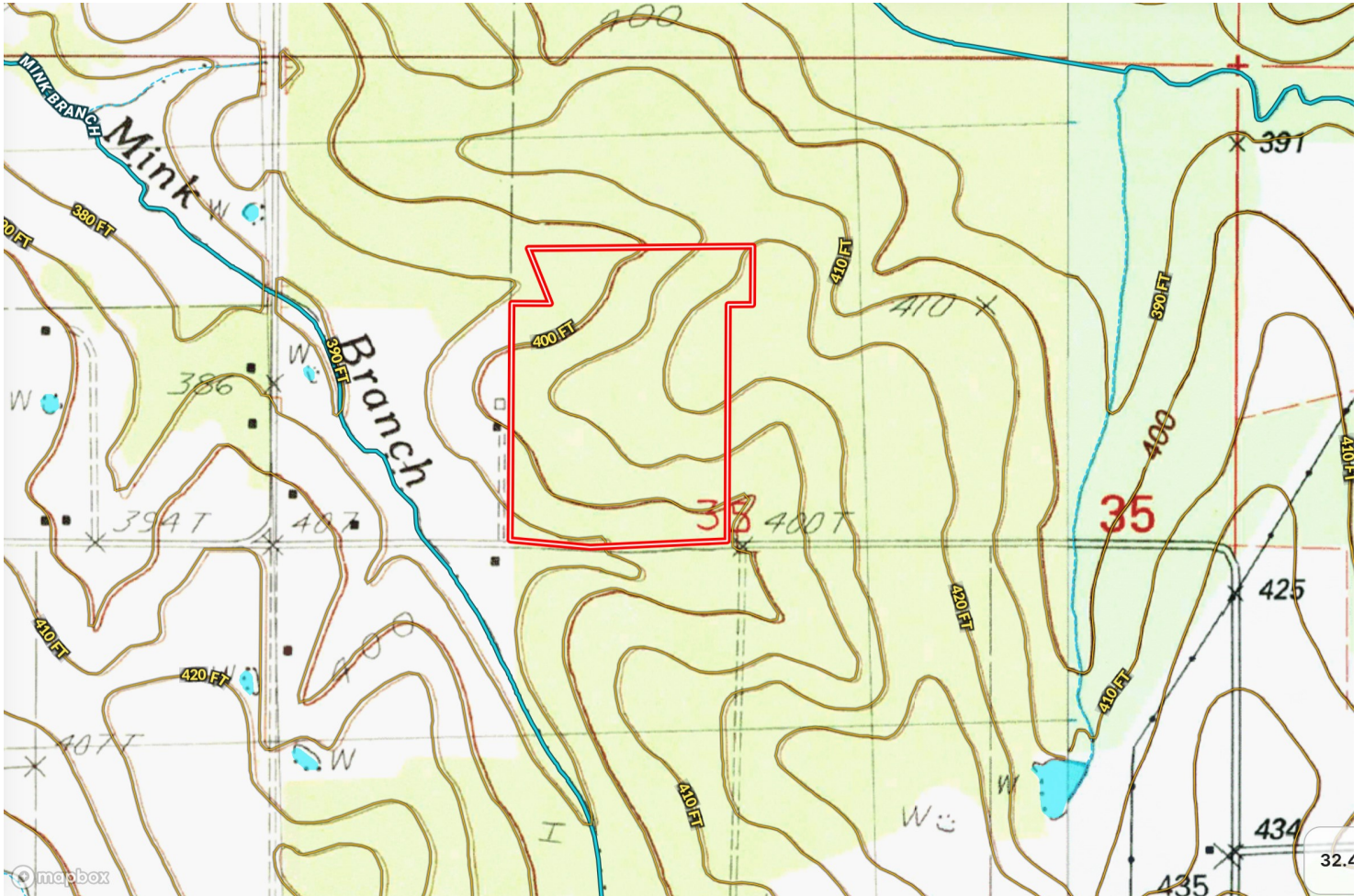
Expect More. Get More.



**DAVID BELDEN**  
ALC®, REALTOR®

O: 601.898.2772 | C: 601.415.3884  
DBelden@TomSmithLand.com

# TOPO MAP



**DALE WILDS**  
REALTOR®

O: 601.898.2772 | C: 662.715.7109  
Dale@TomSmithLand.com



Expect More. Get More.

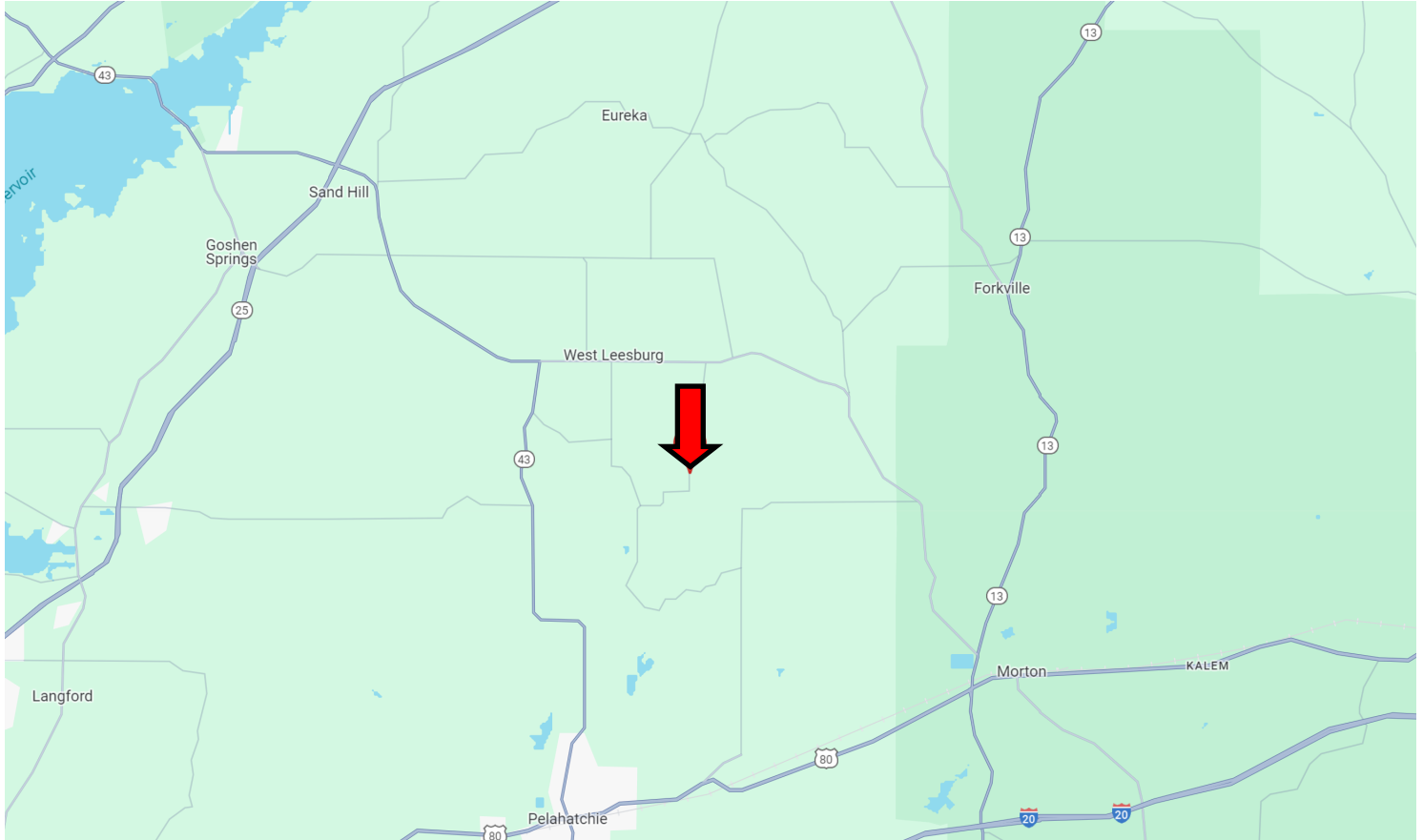


**DAVID BELDEN**  
ALC®, REALTOR®

O: 601.898.2772 | C: 601.415.3884  
DBelden@TomSmithLand.com



# DIRECTIONAL MAP



**DIRECTIONS FROM HWY 80 AND HWY 43 IN PELAATCHIE MS:** Travel Hwy 80 for 2.7 miles. Turn left onto Old Hwy 80 and travel 1 mile. Turn left onto Barker Rd. After 5.6 miles, the property will be on the right.

[GOOGLE MAP LINK](#)



**DALE WILDS**  
REALTOR®

O: 601.898.2772 | C: 662.715.7109  
Dale@TomSmithLand.com



Expect More. Get More.



**DAVID BELDEN**  
ALC®, REALTOR®

O: 601.898.2772 | C: 601.415.3884  
DBelden@TomSmithLand.com