



Expect More. Get More.

# Prime Timber Tract

**32.3± ACRES IN RANKIN COUNTY, MS**



**\$355,750**



Look at this prime timber tract for sale in Rankin County, offering an exceptional opportunity for investment or development. Situated in the highly coveted Pisgah School District, this 32.3+/- acre property boasts a range of desirable features that make it an attractive prospect for various purposes. With water and electric utilities available at the road, this tract provides convenience and accessibility for potential buyers. This timber tract boasts an impressive amount of paved road frontage. The property offers excellent visibility and easy access, enhancing its appeal for development opportunities. The property comprises a diverse mix of planted pine stands. It features approximately 30+/- acres of 2-year-old pines. Call David Belden or Clay Simmons today for your private showing!



**CLAY SIMMONS**  
REALTOR®

O: 601.898.2772 | C: 601.672.6864  
Clay@TomSmithHomes.com



**DAVID BELDEN**  
REALTOR®

O: 601.898.2772 | C: 601.415.3884  
DBelden@TomSmithLand.com



**CLAY SIMMONS**  
REALTOR®

O: 601.898.2772 | C: 601.672.6864  
Clay@TomSmithHomes.com

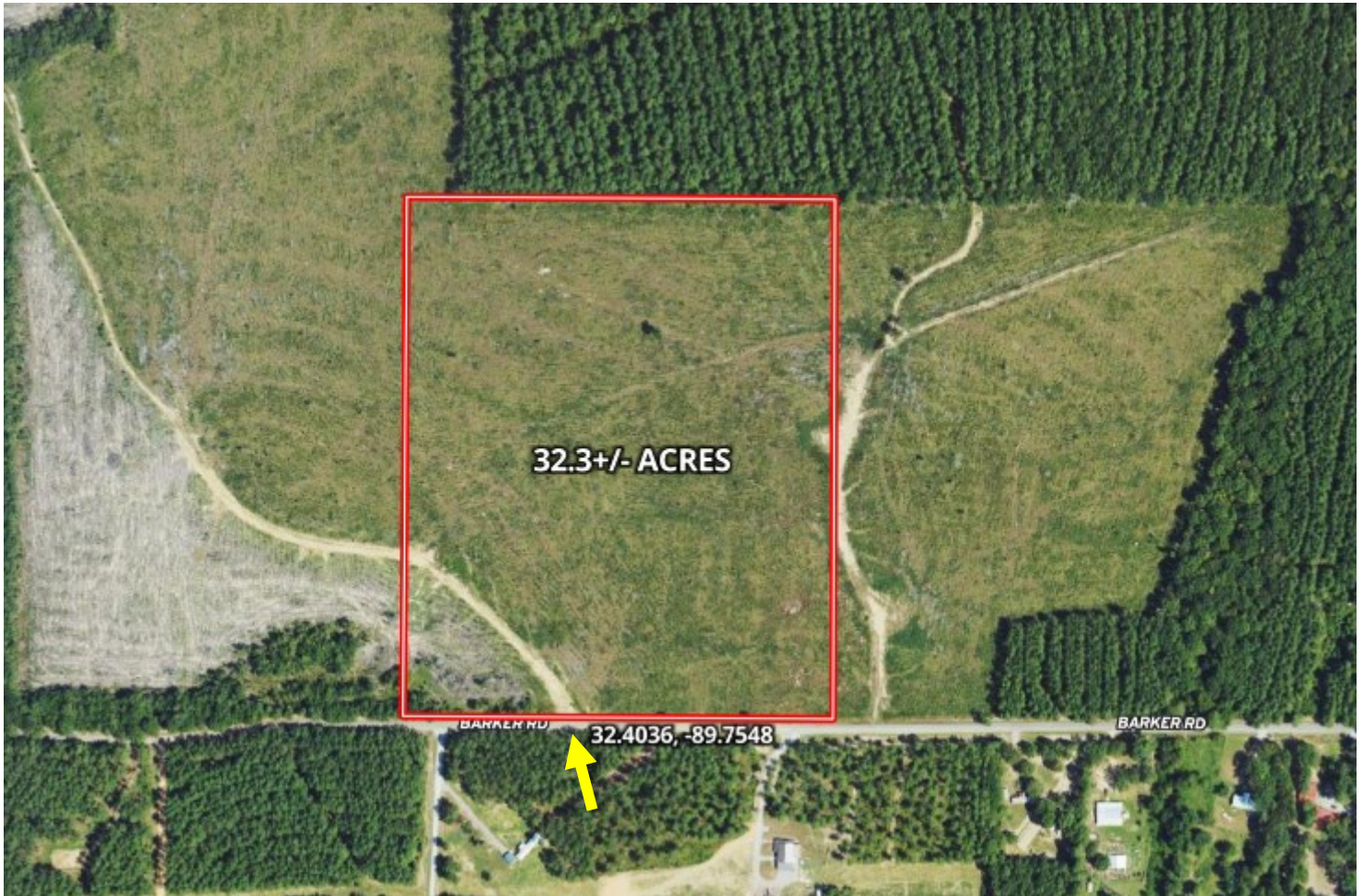


**DAVID BELDEN**  
REALTOR®

O: 601.898.2772 | C: 601.415.3884  
DBelden@TomSmithLand.com



# AERIAL MAP



land **id.** [CLICK HERE FOR THE LANDID INTERACTIVE MAP](#)

CLAY **SIMMONS**  
REALTOR®

O: 601.898.2772 | C: 601.672.6864  
Clay@TomSmithHomes.com



DAVID **BELDEN**  
REALTOR®

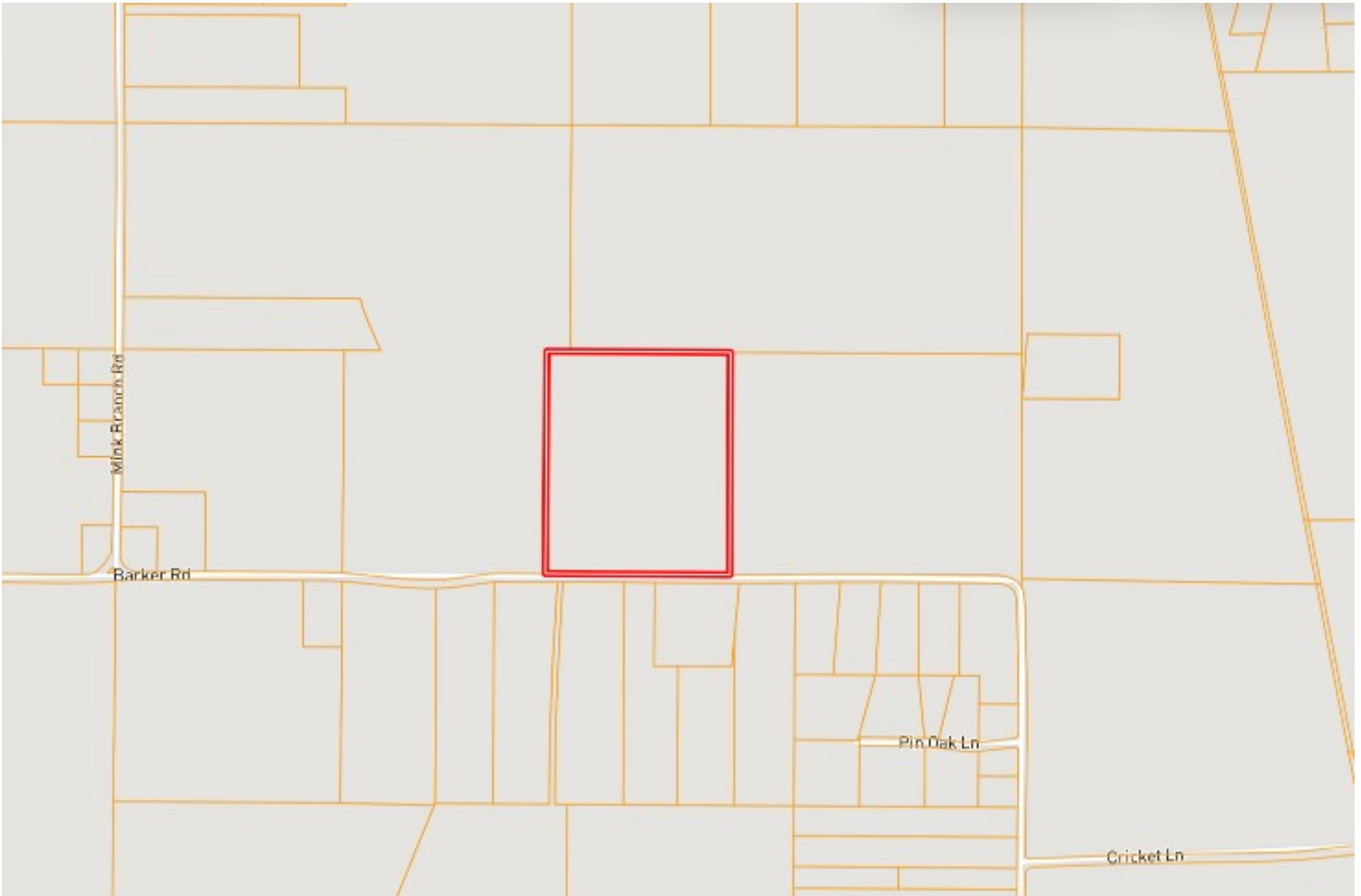
O: 601.898.2772 | C: 601.415.3884  
DBelden@TomSmithLand.com

[TomSmithLandandHomes.com](http://TomSmithLandandHomes.com)

Information is believed to be accurate but not guaranteed.

2011-2024  
BEST  
DECKRAGES

# OWNERSHIP MAP



**CLAY SIMMONS**  
REALTOR®

O: 601.898.2772 | C: 601.672.6864  
Clay@TomSmithHomes.com

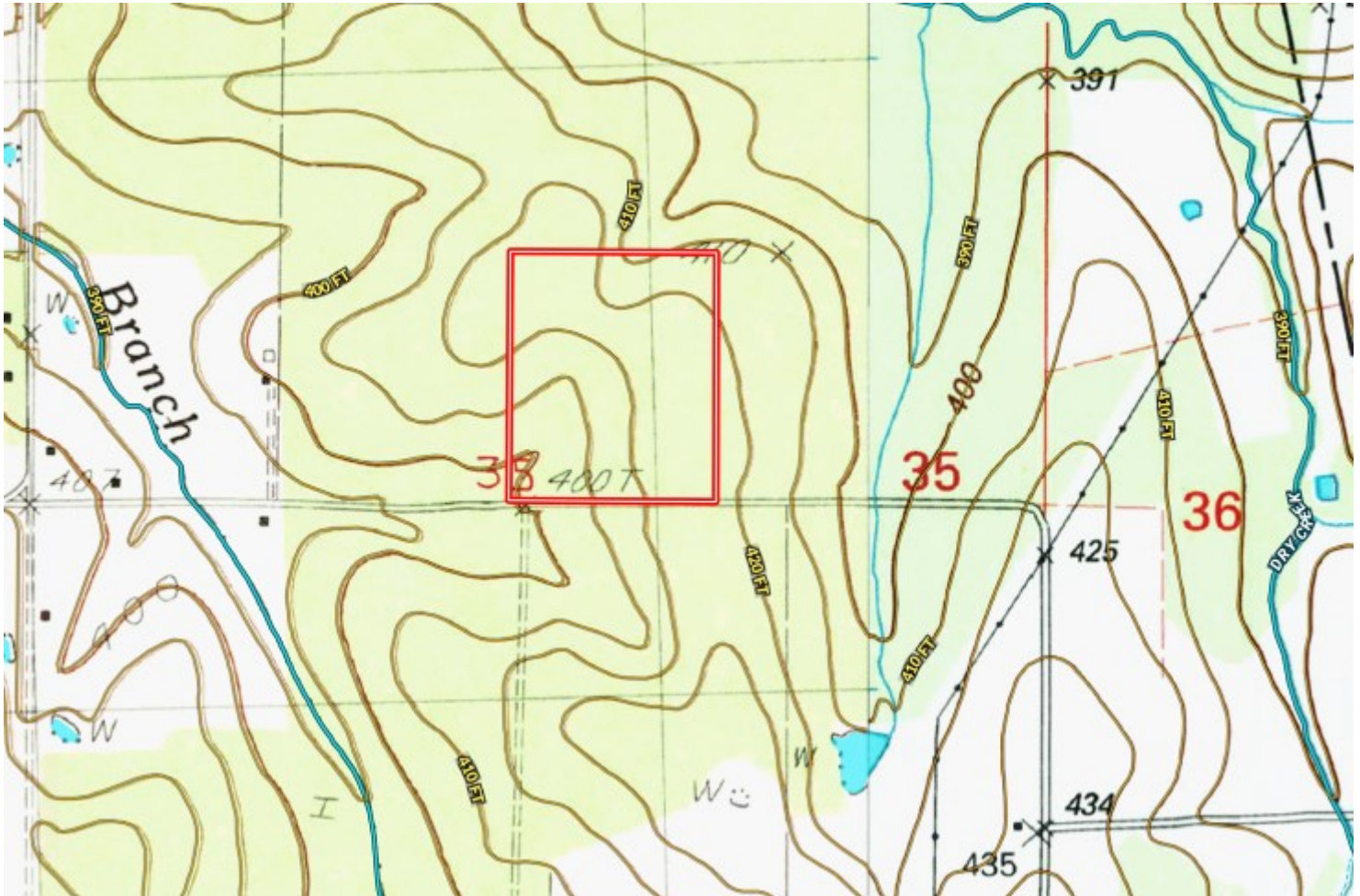


**DAVID BELDEN**  
REALTOR®

O: 601.898.2772 | C: 601.415.3884  
DBelden@TomSmithLand.com



# TOPO MAP



**CLAY SIMMONS**  
REALTOR®

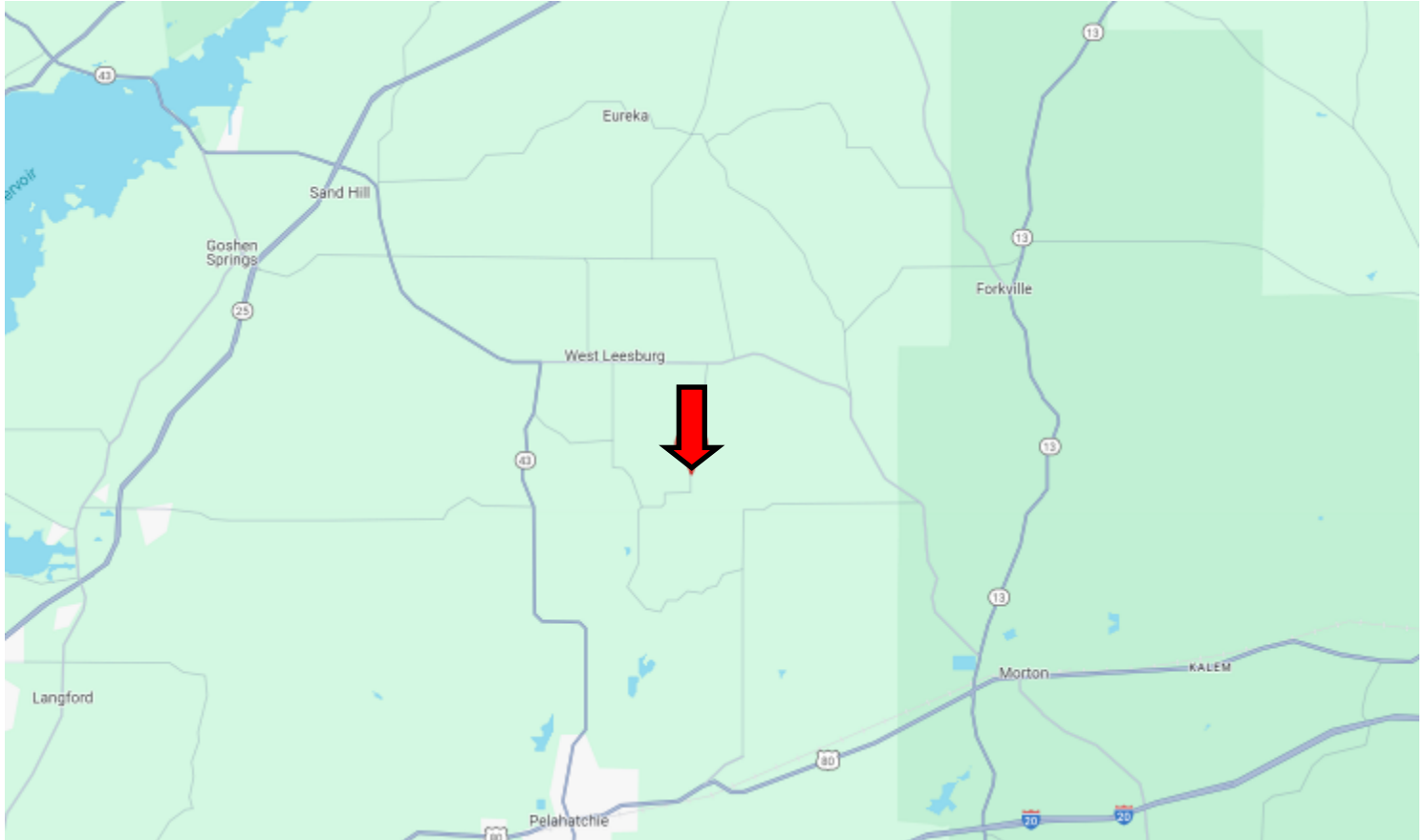
O: 601.898.2772 | C: 601.672.6864  
Clay@TomSmithHomes.com



**DAVID BELDEN**  
REALTOR®

O: 601.898.2772 | C: 601.415.3884  
DBelden@TomSmithLand.com

# DIRECTIONAL MAP



**DIRECTIONS FROM HWY 80 AND HWY 43 IN PELAHATCHIE MS:** Travel Hwy 80 for 2.7 miles. Turn left onto Old Hwy 80 and travel 1 mile. Turn left onto Barker Rd. After 5.5 miles, the property will be on the right.

[GOOGLE MAP LINK](#)



**CLAY SIMMONS**  
REALTOR®

O: 601.898.2772 | C: 601.672.6864  
Clay@TomSmithHomes.com



Expect More. Get More.



**DAVID BELDEN**  
REALTOR®

O: 601.898.2772 | C: 601.415.3884  
DBelden@TomSmithLand.com