



Expect More. Get More.

# Recreational or Development Property

42.7± ACRES IN  
LAFAYETTE COUNTY, MS  
\$323,850



Are you searching for a profitable investment opportunity in Lafayette County, MS? Look no further than this impressive 42.7± acre parcel of land just outside Oxford, Mississippi. Located just 7.9 miles from Vaught-Hemingway Stadium, this prime property is the perfect canvas for investors and developers seeking to make the most of its exceptional location. This land has ample recreational potential, offering hiking trails, horseback riding, and outstanding hunting opportunities. It is an ideal prospect for those with a vision. With utilities readily available, real estate developers will also find it an attractive investment. This investment opportunity is a must-have, with a partial timber reserve. Discover more by contacting David today!



DAVID  
**BELDEN**  
REALTOR®

Office: 601.898.2772  
Cell: 601.415.3883  
DBelden@TomSmithLand.com



Expect More. Get More.

A Real Estate Expert You Can Trust

TomSmithLandandHomes.com

Information is believed to be accurate but not guaranteed.







## A Real Estate Expert You Can Trust!

**DAVID BELDEN**  
REALTOR®

O: 601.898.2772 C: 601.415.3883

DBelden@TomSmithLand.com

TomSmithLandandHomes.com



Expect More. Get More.





# Aerial Map



A Real Estate Expert  
*You Can Trust!*

**DAVID BELDEN**  
REALTOR®

O: 601.898.2772 C: 601.415.3883

DBelden@TomSmithLand.com

TomSmithLandandHomes.com

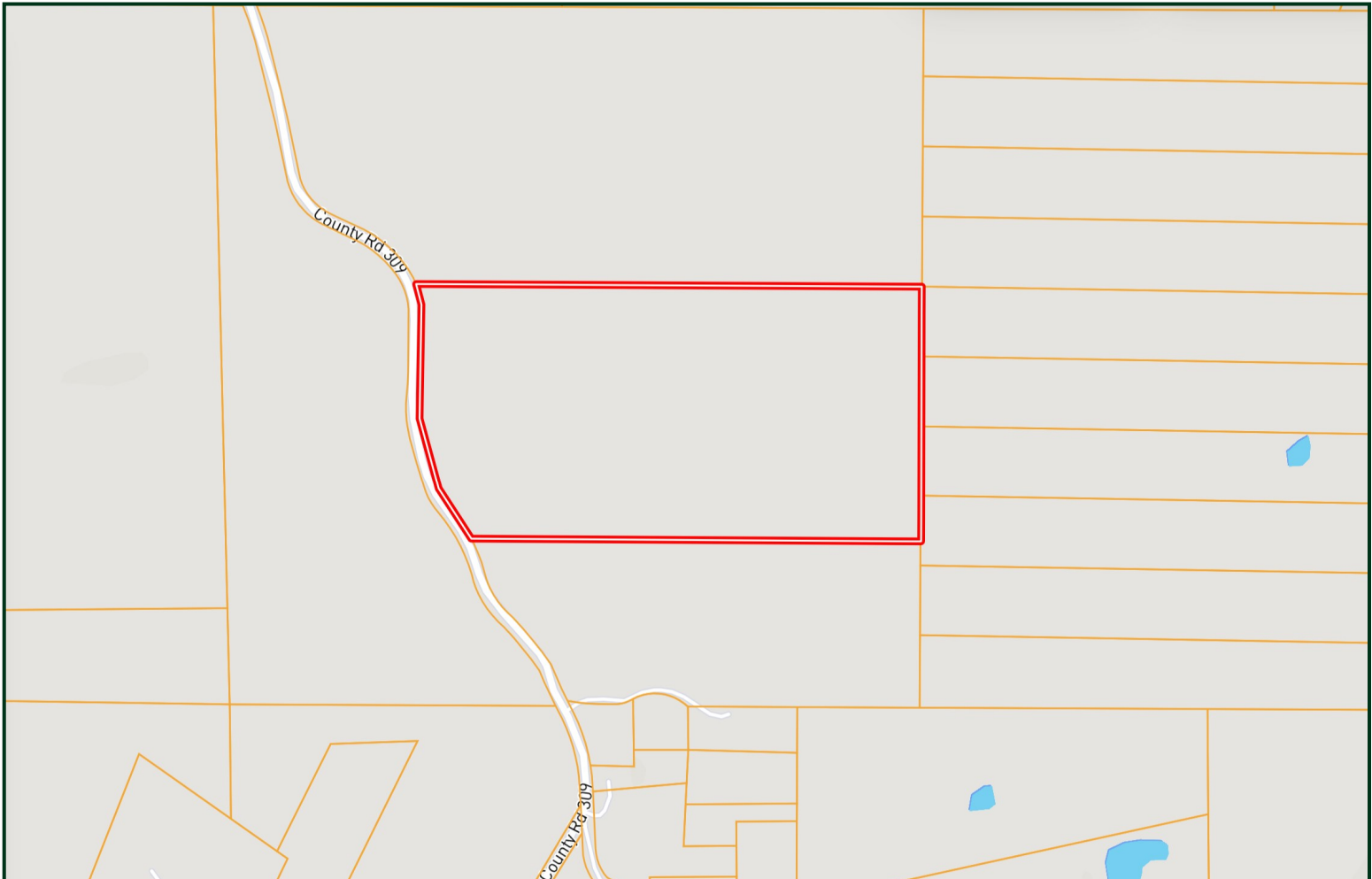


Expect More. Get More.



Information is believed to be accurate but not guaranteed.

# Ownership Map



A Real Estate Expert  
*You Can Trust!*

**DAVID BELDEN**  
REALTOR®

O: 601.898.2772 C: 601.415.3883

DBelden@TomSmithLand.com

TomSmithLandandHomes.com



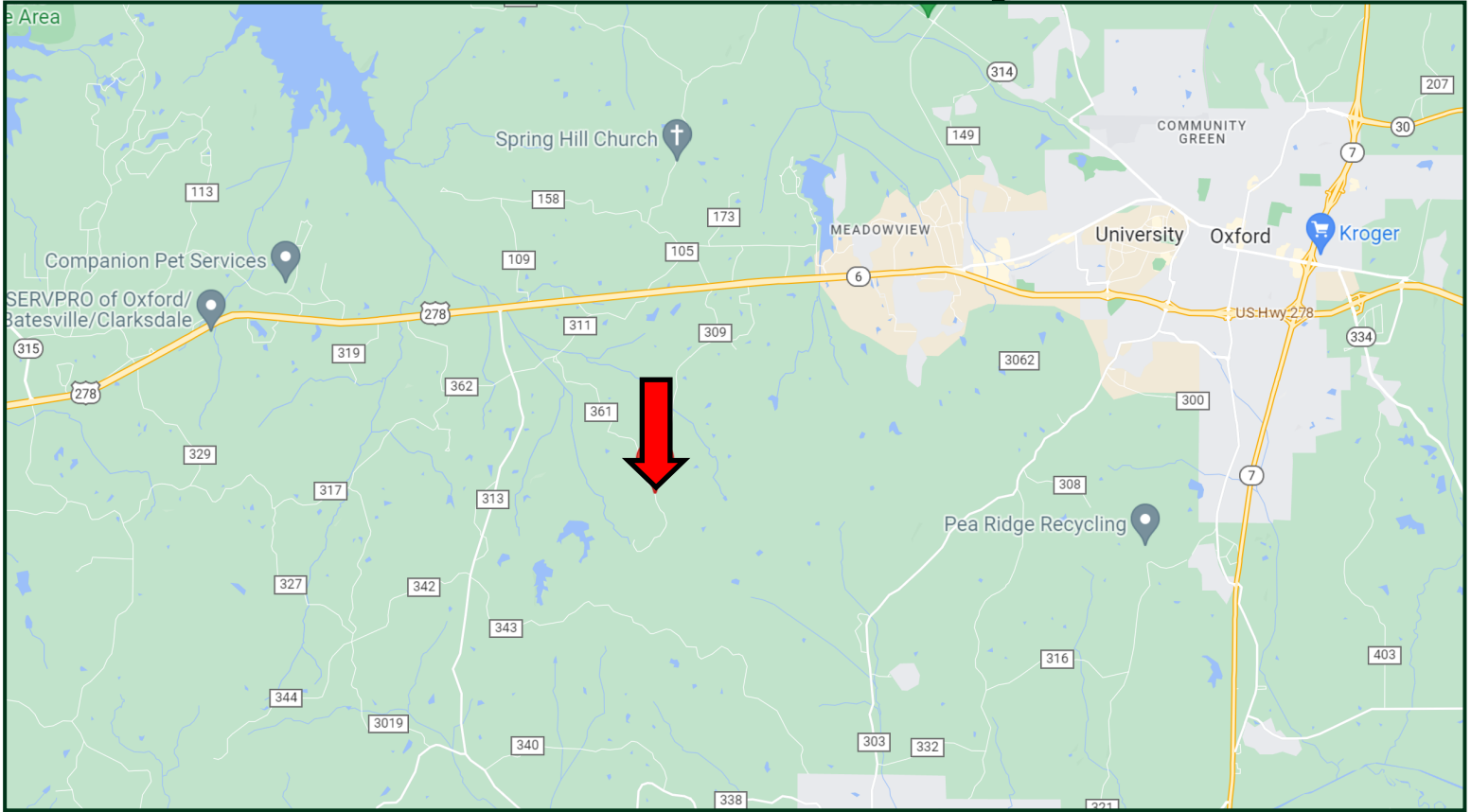
Expect More. Get More.



Information is believed to be accurate but not guaranteed.



# Directional Map



**From Hwy 6 and Jackson Avenue in Oxford, MS:** Travel Hwy 6 West for 2.7 miles. Turn left onto CR 309. After 2.8 miles, the property will be on your left. [GOOGLE MAP LINK](#)



**DAVID  
BELDEN**  
REALTOR®

Office: 601.898.2772  
Cell: 601.415.3883  
DBelden@TomSmithLand.com



**A Real Estate Expert You Can Trust**  
TomSmithLandandHomes.com

Information is believed to be accurate but not guaranteed.

