

44.5± Acres of Income Producing Property in Bolivar County inside Cleveland City Limits

Located inside the Cleveland City Limits, this 44.5± acre Bolivar County tract offers various income opportunities. Roughly 35± acres are leased to a farmer, while the remaining 10± acres produce income through a lease with a radio and cable company, as there are two towers on the property. The sale also includes an easement from Memorial Drive to the property. As Cleveland continues to grow, the land could potentially serve as a residential development opportunity in the future. Call Charlie to schedule your private showing!



\$250,000



**CHARLIE
HEINSZ**
REALTOR®

Office: 662.441.2500

Cell: 662.719.7218

Charlie@TomSmithLand.com



Expect More. Get More.

A Real Estate Expert You Can Trust

TomSmithLandandHomes.com

Information is believed to be accurate but not guaranteed.





A Real Estate Expert *You Can Trust!*

CHARLIE HEINSZ
REALTOR®
O: 662.441.2500 C: 662.719.7218
Charlie@TomSmithLand.com
TomSmithLandandHomes.com



Expect More. Get More.





A Real Estate Expert
You Can Trust!

CHARLIE HEINSZ
 REALTOR®
 O: 662.441.2500 C: 662.719.7218
 Charlie@TomSmithLand.com
 TomSmithLandandHomes.com



Information is believed to be accurate but not guaranteed.



A Real Estate Expert
You Can Trust!

CHARLIE HEINSZ
REALTOR®
O: 662.441.2500 C: 662.719.7218
Charlie@TomSmithLand.com
TomSmithLandandHomes.com

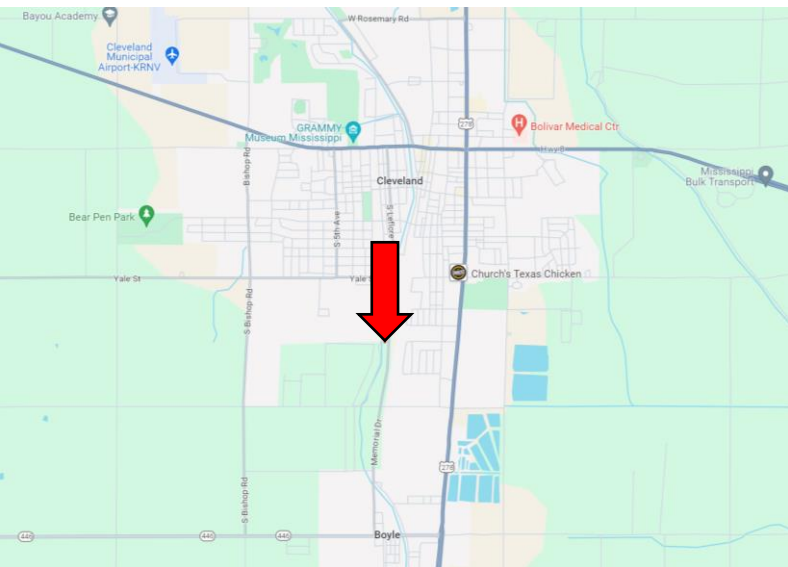
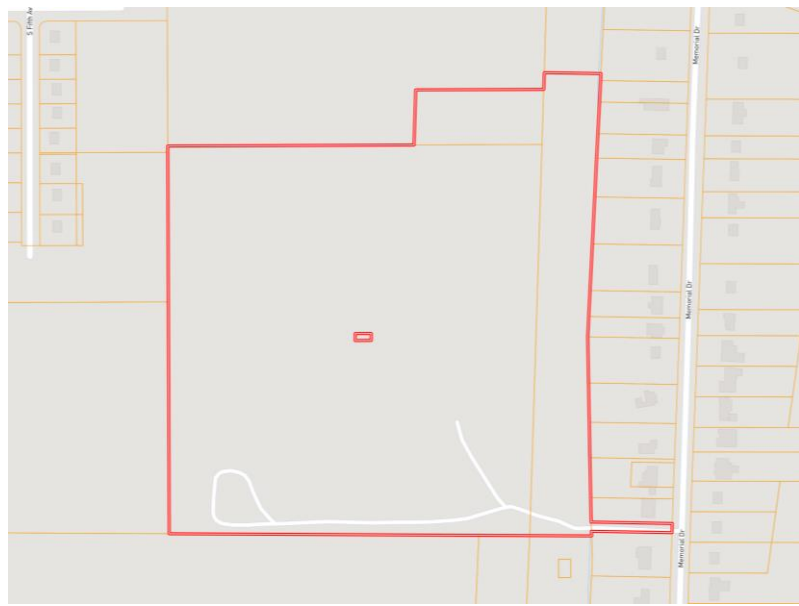
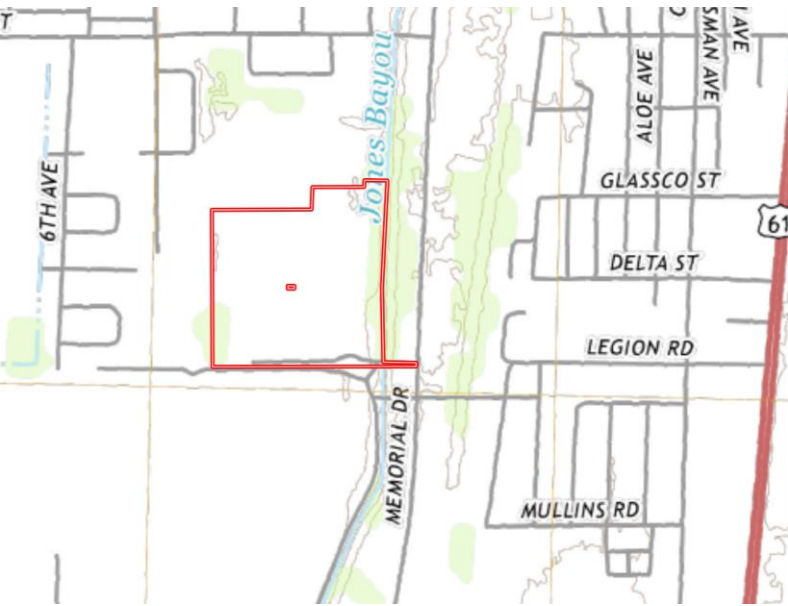


Expect More. Get More.



Information is believed to be accurate but not guaranteed.

MAPS | [Click for Interactive Map](#)



Directions from Hwy 8 & Hwy 61 in Cleveland, MS:

Travel south on Hwy 61 for 0.6 miles. Turn right onto Lee Street and travel 0.4 miles. Turn left onto S. Leflore Avenue. After 0.9 miles, the property entrance will be on the right.

[Click for Google Maps](#)



**CHARLIE
HEINSZ**
REALTOR®

Office: 662.441.2500

Cell: 662.719.7218

Charlie@TomSmithLand.com



Expect More. Get More.

A Real Estate Expert You Can Trust

TomSmithLandandHomes.com

Information is believed to be accurate but not guaranteed.

