

65± ACRES WITH 42+/- ACRE LAKE IN WEBSTER COUNTY, MISSISSIPPI



REDUCED!

\$249,000

If you are interested in a fishing retreat, weekend get-a-way, or beautiful home-site on a private lake, look at this property! It is sixty-five acres with a forty-two acre lake within the city limits of Mantee, Mississippi. It is within 30 minutes of Starkville and is only two tenths mile west of Highway 15. Utilities are available. There are three access points and the views are amazing. Build a rental or personal residence. Enjoy the benefits of living in the country with fishing and boating lifestyle. Call Michael Halfacre for more information.



**MICHAEL
HALFACRE**

MANAGING BROKER

Office: 662.268.6333

Cell: 662.242.4220

MHalfacre@TomSmithLand.com



Expect More. Get More.

A Real Estate Expert You Can Trust

TomSmithLandandHomes.com

Information is believed to be accurate but not guaranteed.





A Real Estate Expert *You Can Trust!*

MICHAEL HALFACRE

MANAGING BROKER

O: 662.268.6333 C: 662.242.4220

MHalfacre@TomSmithLand.com

TomSmithLandandHomes.com



Expect More. Get More.





A Real Estate Expert *You Can Trust!*

MICHAEL HALFACRE

MANAGING BROKER

O: 662.268.6333 C: 662.242.4220

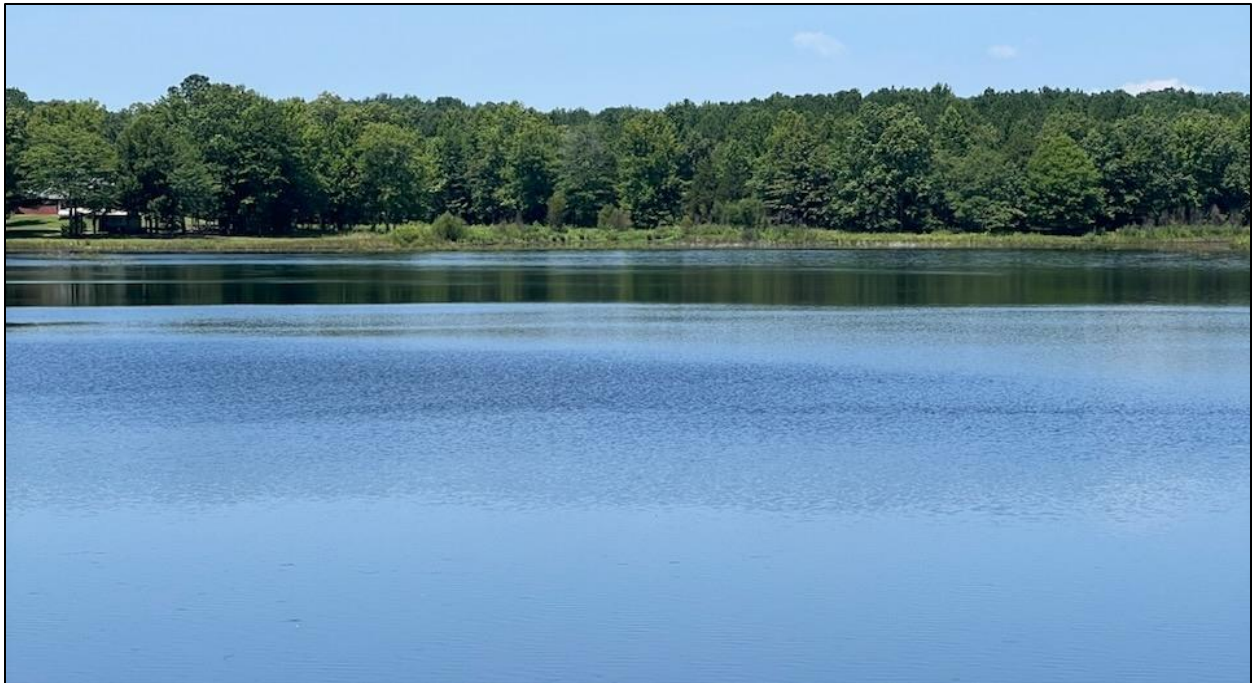
MHalfacre@TomSmithLand.com

TomSmithLandandHomes.com



Expect More. Get More.





A Real Estate Expert *You Can Trust!*

MICHAEL HALFACRE

MANAGING BROKER

O: 662.268.6333 C: 662.242.4220

MHalfacre@TomSmithLand.com

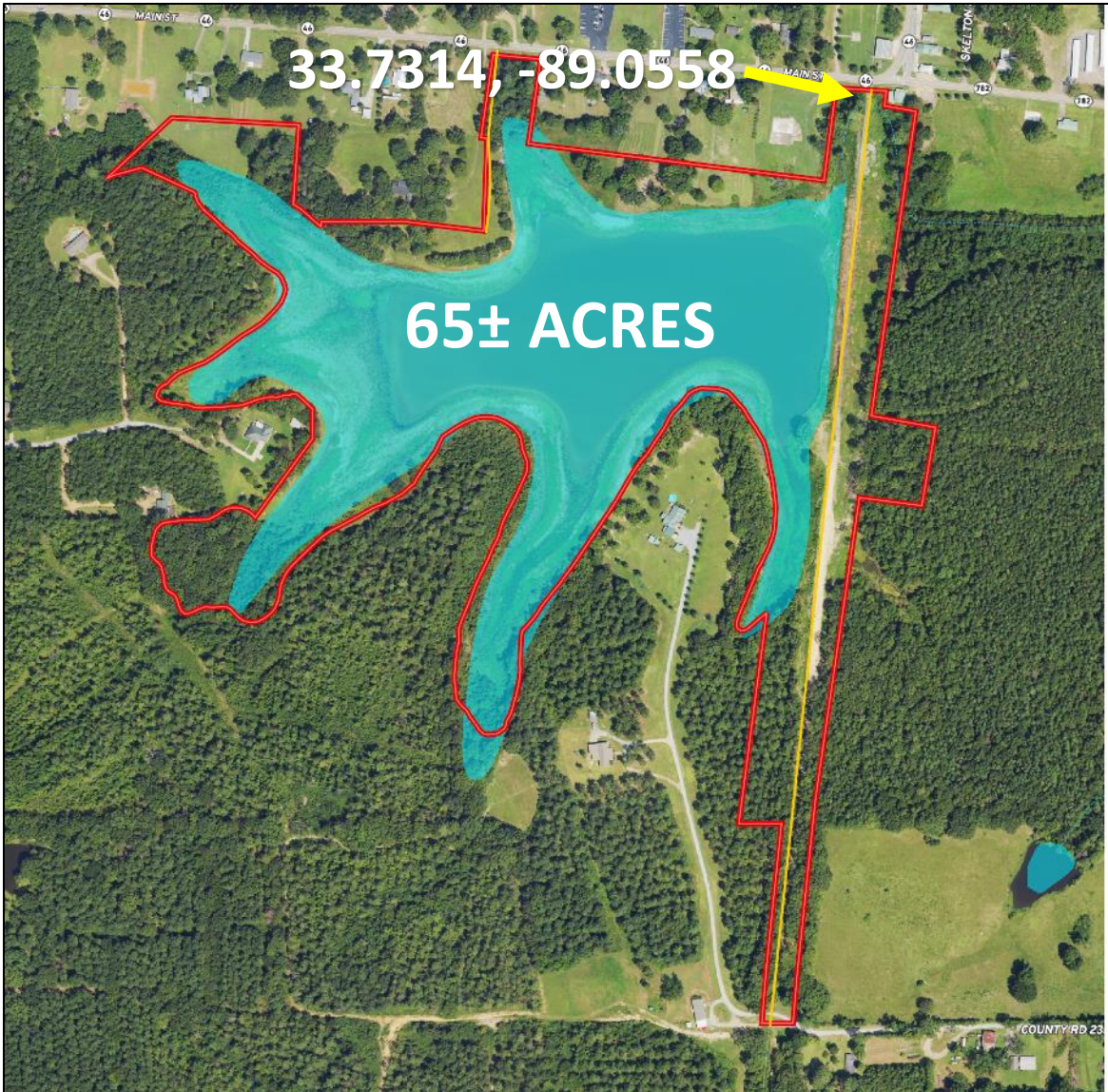
TomSmithLandandHomes.com



Expect More. Get More.



AERIAL MAP



[CLICK HERE FOR AN INTERACTIVE MAP](#)

A Real Estate Expert
You Can Trust!

MICHAEL HALFACRE

MANAGING BROKER

O: 662.268.6333 C: 662.242.4220

MHalfacre@TomSmithLand.com

TomSmithLandandHomes.com

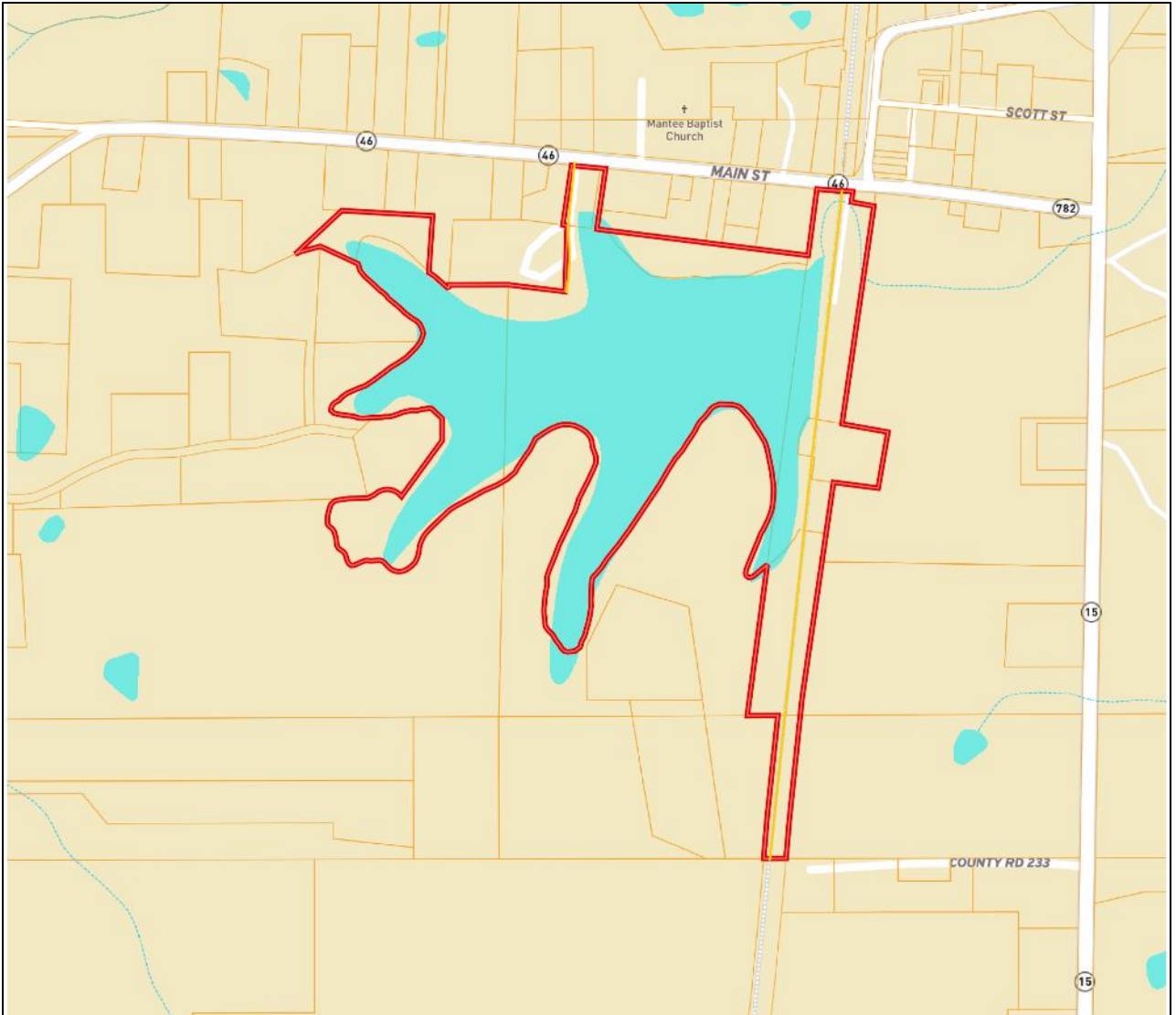


Expect More. Get More.



Information is believed to be accurate but not guaranteed.

OWNERSHIP MAP



A Real Estate Expert
You Can Trust!

MICHAEL HALFACRE

MANAGING BROKER

O: 662.268.6333 C: 662.242.4220

MHalfacre@TomSmithLand.com

TomSmithLandandHomes.com

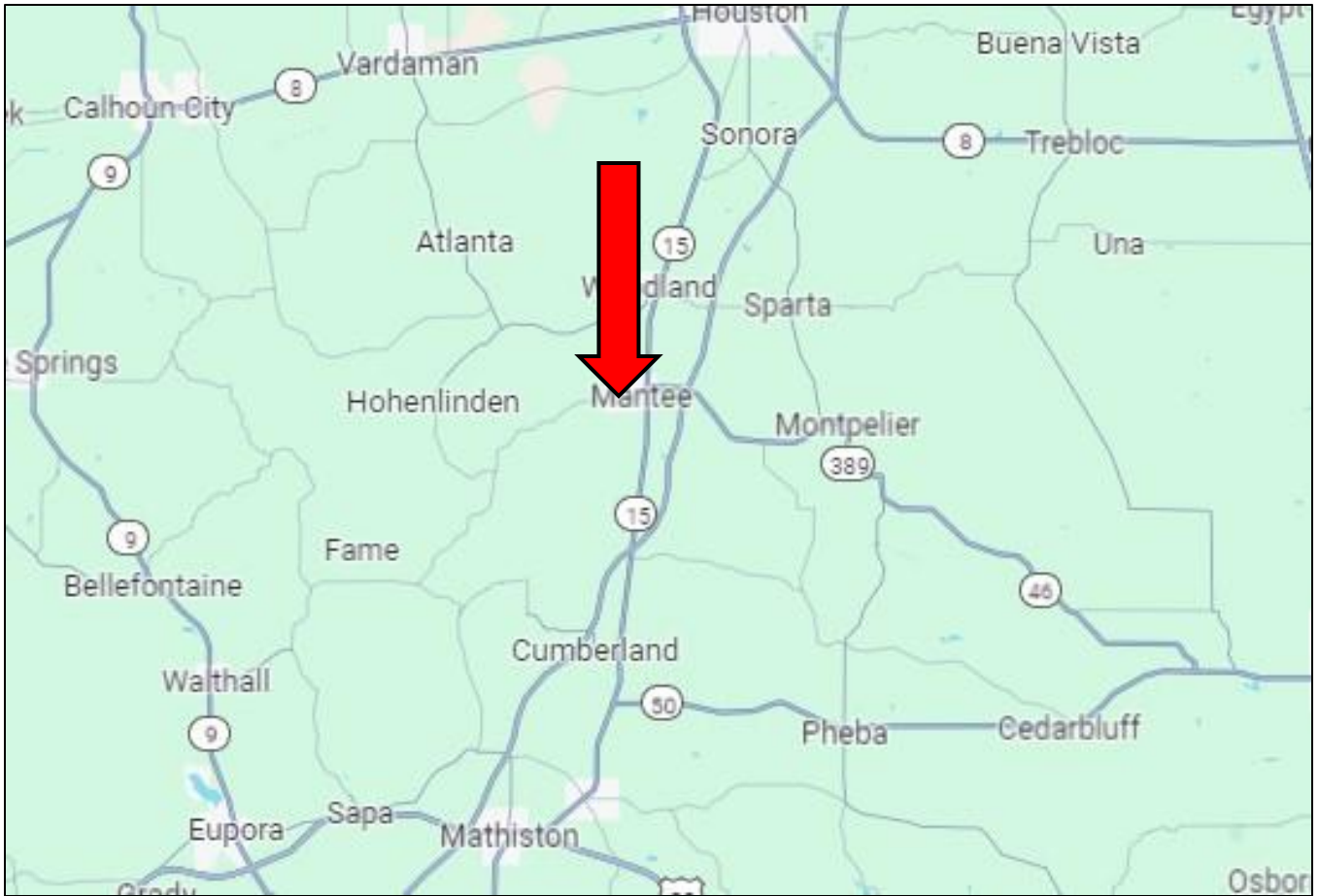


Expect More. Get More.



Information is believed to be accurate but not guaranteed.

DIRECTIONAL MAP



Directions from Mantee; The property is situated within the city limits of Mantee and two tenths mile west of Highway 15. Mantee is thirty minutes from Starkville, Mississippi.

[GOOGLE MAP LINK](#)



**MICHAEL
HALFACRE**

MANAGING BROKER

Office: 662.268.6333

Cell: 662.242.4220

MHalfacre@TomSmithLand.com



Expect More. Get More.

A Real Estate Expert You Can Trust

TomSmithLandandHomes.com

Information is believed to be accurate but not guaranteed.

