

9± ACRE HUNTING TRACT OR SECLUDED HOMESITE IN YALOBUSHA COUNTY, MS



\$45,000

Have you been searching for a new secluded home site or hunting tract of your own? Welcome to your new 9± acre tract in Yalobusha County, MS! Access to this tract is provided through a deeded easement off Hwy 32 in Oakland, MS. The timber makeup is primarily comprised of hardwoods that are variously aged. Enid, Sardis, and Grenada Lakes are all within a 25-30 minute drive for the avid fisherman. Oxford is a short 36-mile drive east of the property, which allows you to enjoy all the amenities it has to offer. Water is provided through Billys Creek Rural Water Association, and power is through Tallahatchie Valley EPA. If you want to own your own hunting tract or home site, call Kadero Edley today!



**KADERO
EDLEY**
REALTOR®

Office: 601.898.2772
Cell: 601.488.7000
Kadero@TomSmithLand.com



Expect More. Get More.

A Real Estate Expert You Can Trust

TomSmithLandandHomes.com

Information is believed to be accurate but not guaranteed.





A Real Estate Expert *You Can Trust!*

KADERO EDLEY
REALTOR®

O: 601.898.2772 C: 601.488.7000

Kadero@TomSmithLand.com

TomSmithLandandHomes.com



Expect More. Get More.



Information is believed to be accurate but not guaranteed.

Aerial Map



[LandId Interactive Map Link](#)

A Real Estate Expert
You Can Trust!

KADERO EDLEY
REALTOR®

O: 601.898.2772 C: 601.488.7000

Kadero@TomSmithLand.com

TomSmithLandandHomes.com

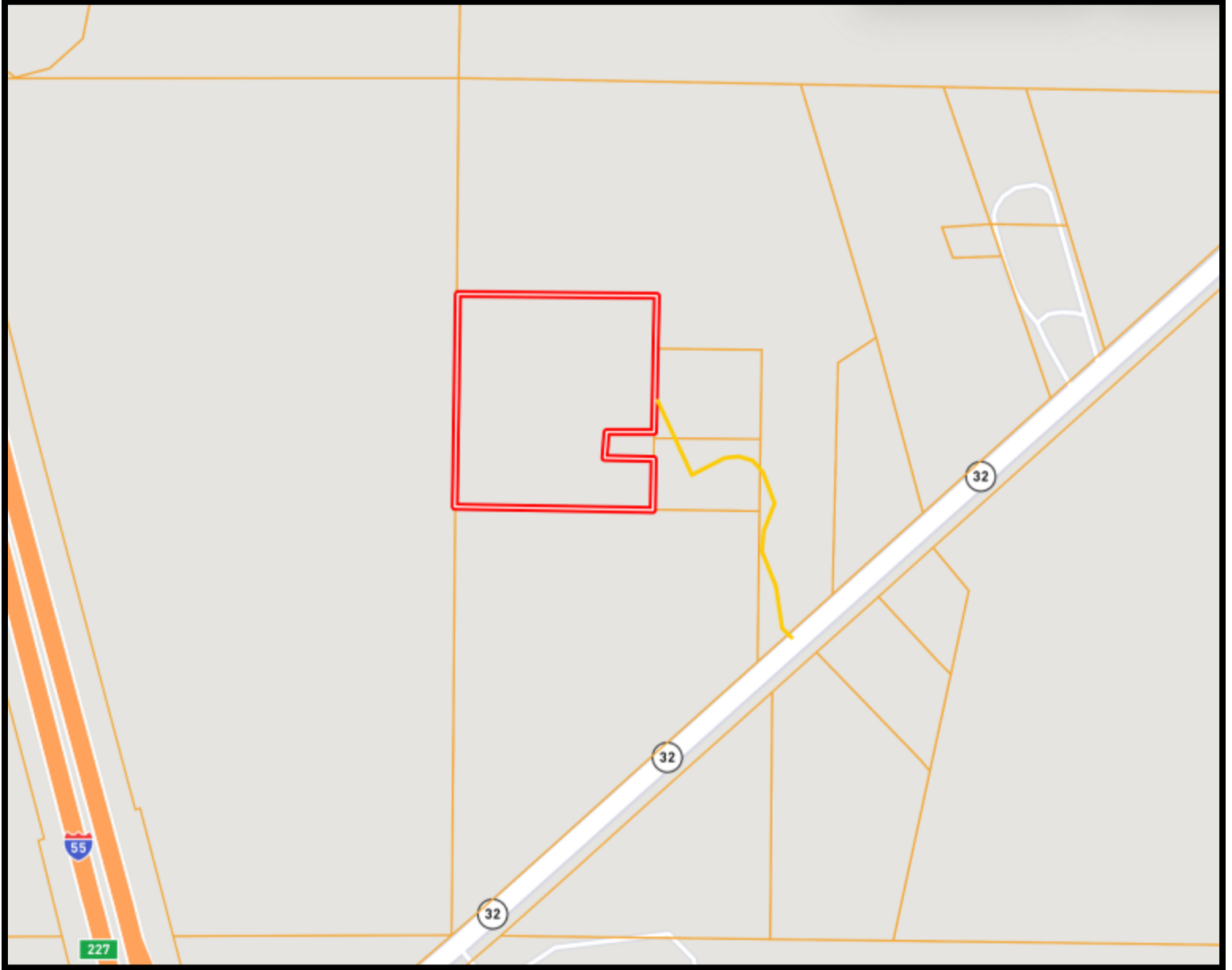


Expect More. Get More.



Information is believed to be accurate but not guaranteed.

Ownership Map



A Real Estate Expert
You Can Trust!

KADERO EDLEY
REALTOR®

O: 601.898.2772 C: 601.488.7000

Kadero@TomSmithLand.com

TomSmithLandandHomes.com

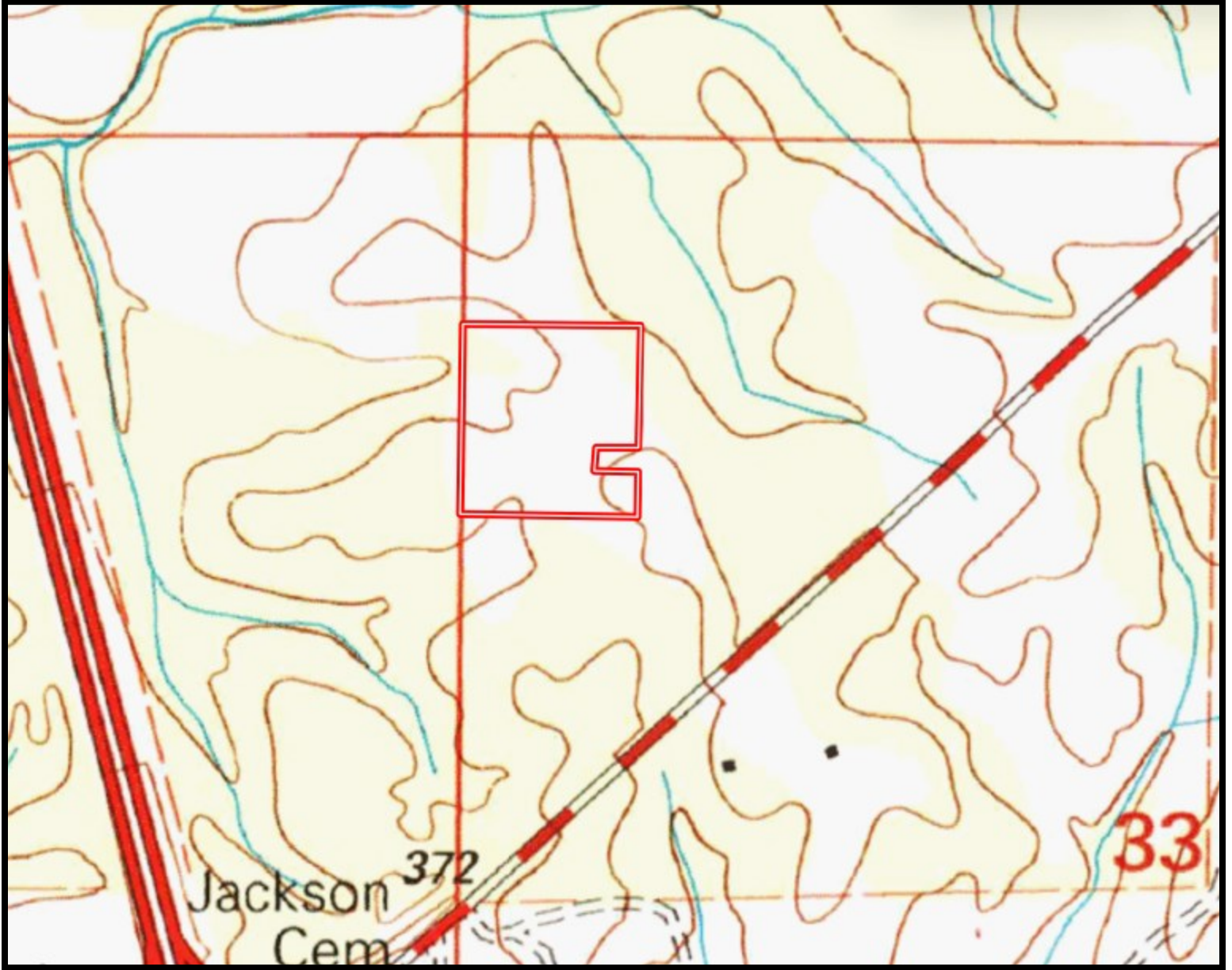


Expect More. Get More.



Information is believed to be accurate but not guaranteed.

Topography Map



A Real Estate Expert
You Can Trust!

KADERO EDLEY
REALTOR®

O: 601.898.2772 C: 601.488.7000

Kadero@TomSmithLand.com

TomSmithLandandHomes.com

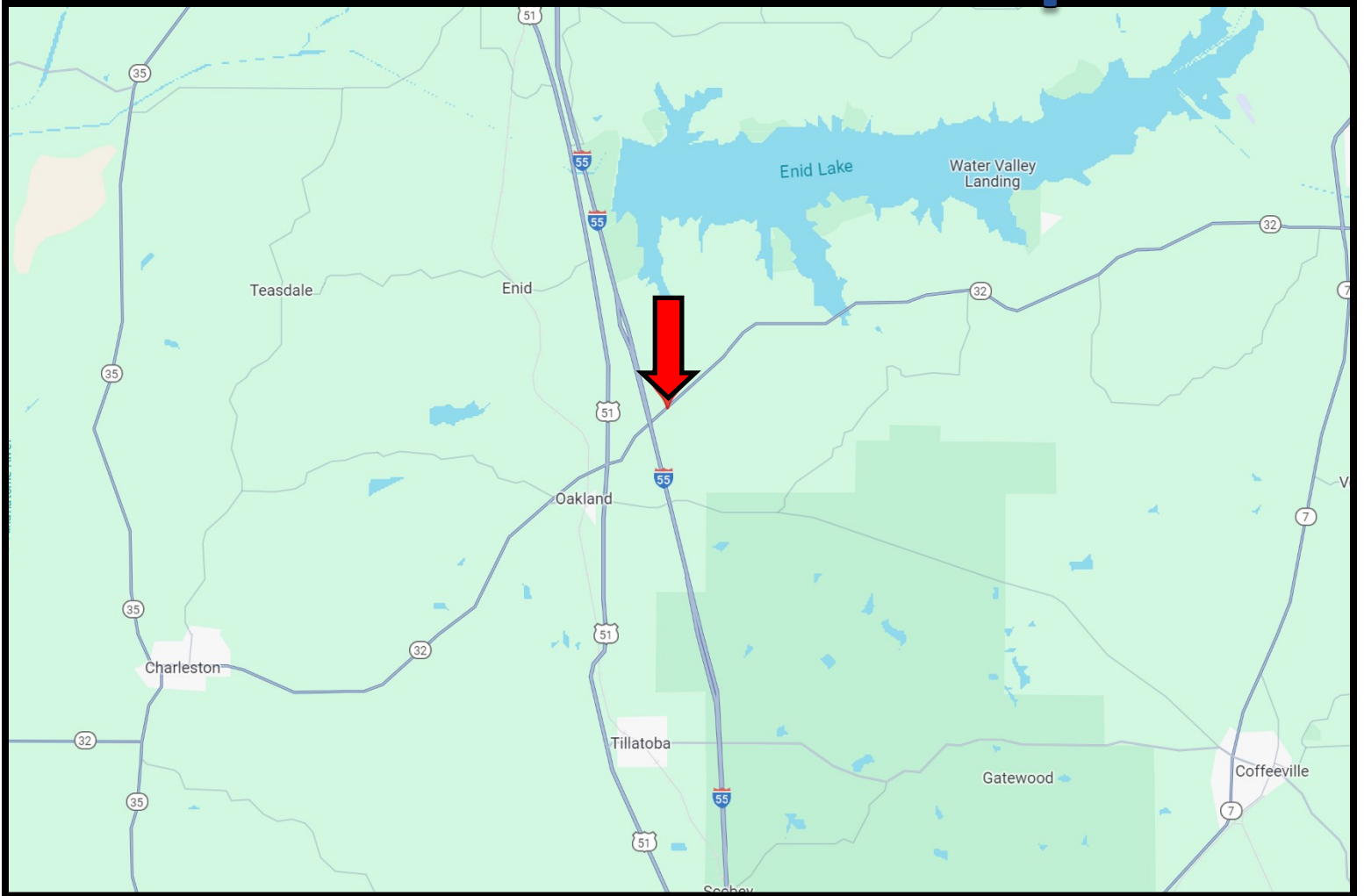


Expect More. Get More.



Information is believed to be accurate but not guaranteed.

Directional Map



Directions from I-55 and Hwy 32 in Oakland, MS: Take exit 227 for Hwy 32 toward Oakland/Water Valley. Turn onto Hwy 32 and travel 0.4 miles. The property entrance will be on your left.

[Google Maps Link](#)



**KADERO
EDLEY**
REALTOR®

Office: 601.898.2772
Cell: 601.488.7000
Kadero@TomSmithLand.com



Expect More. Get More.

A Real Estate Expert You Can Trust
TomSmithLandandHomes.com

Information is believed to be accurate but not guaranteed.

