

# RECREATIONAL TRACT

19.27+/- Acres in Pontotoc County, MS



**\$86,700**

This 19.27+/- acre wooded tract in Pontotoc County, MS, is a prime recreational property. It offers approximately 865 feet of frontage along Mitchell Duke Road and is conveniently located less than a mile from the Tombigbee National Forest, three miles from Davis Lake, and five miles from the Natchez Trace Parkway. The property features a mix of pines and hardwoods, a shooting house for hunting, a storage shed, a wooden foundation ready for a deck or cabin, a 1-acre stocked pond perfect for fishing, and trails ideal for your RV. With community water and electricity available, this property is also an excellent option for a rural residential site. Don't miss out—call Tom today!



**TOM  
WISEMAN**

ASSOCIATE BROKER

Office: 662.268.6333

Cell: 662.317.0467

[TWiseman@TomSmithLand.com](mailto:TWiseman@TomSmithLand.com)



Expect More. Get More.

**A Real Estate Expert You Can Trust**

[TomSmithLandandHomes.com](http://TomSmithLandandHomes.com)

Information is believed to be accurate but not guaranteed.







# A Real Estate Expert *You Can Trust!*

**TOM WISEMAN**

ASSOCIATE BROKER

O: 662.268.6333 C: 662.317.0467

[TWiseman@TomSmithLand.com](mailto:TWiseman@TomSmithLand.com)

[TomSmithLandandHomes.com](http://TomSmithLandandHomes.com)



Expect More. Get More.



Information is believed to be accurate but not guaranteed.





## A Real Estate Expert *You Can Trust!*

**TOM WISEMAN**

ASSOCIATE BROKER

O: 662.268.6333 C: 662.317.0467

[TWiseman@TomSmithLand.com](mailto:TWiseman@TomSmithLand.com)

[TomSmithLandandHomes.com](http://TomSmithLandandHomes.com)



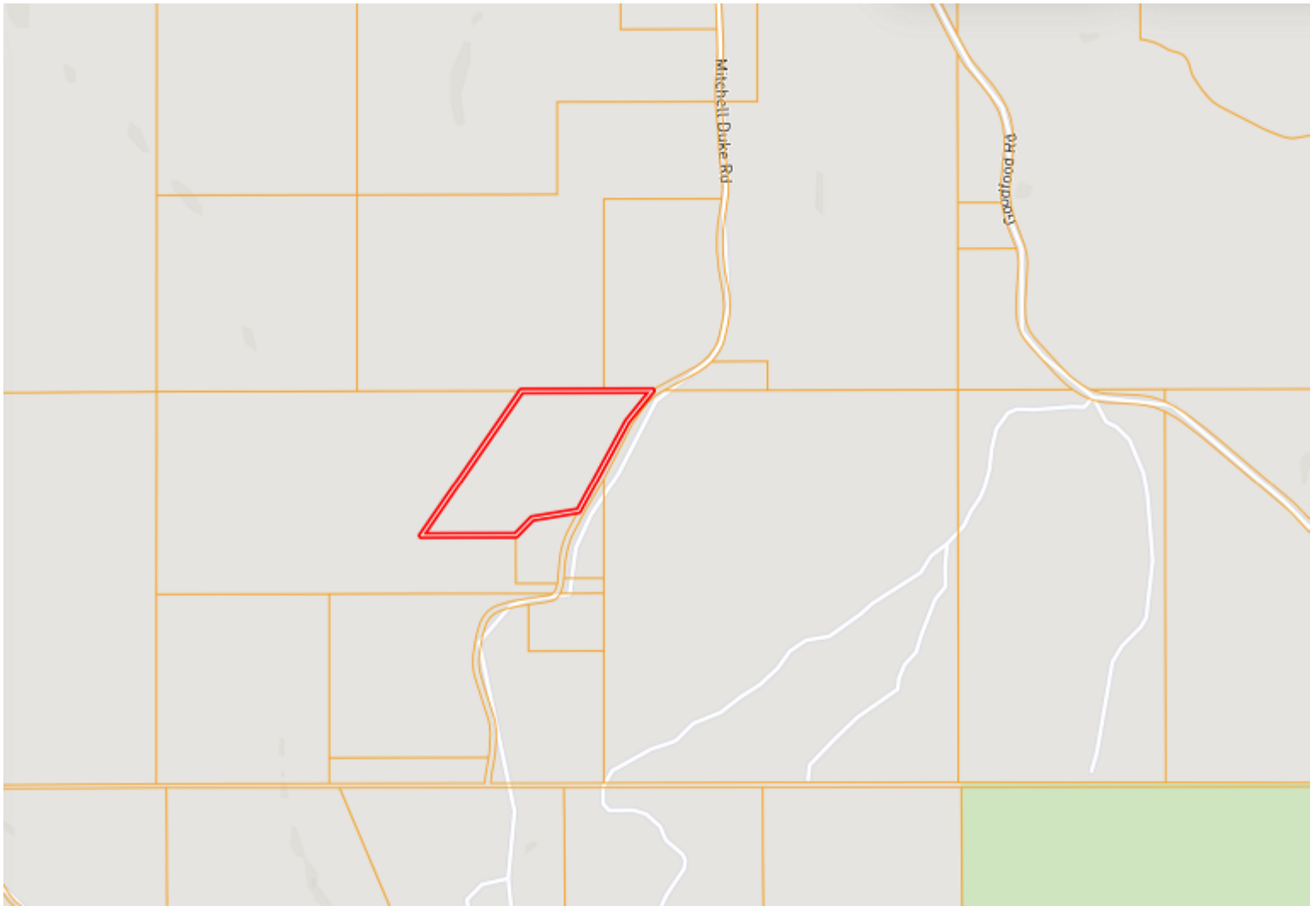
Expect More. Get More.



Information is believed to be accurate but not guaranteed.



# Ownership Map



**A Real Estate Expert**  
*You Can Trust!*

**TOM WISEMAN**

ASSOCIATE BROKER

O: 662.268.6333 C: 662.317.0467

[TWiseman@TomSmithLand.com](mailto:TWiseman@TomSmithLand.com)

[TomSmithLandandHomes.com](http://TomSmithLandandHomes.com)



Expect More. Get More.



Information is believed to be accurate but not guaranteed.

# Aerial Map



[Click Here for the LandId Interactive Map Link](#)

A Real Estate Expert  
*You Can Trust!*

**TOM WISEMAN**

ASSOCIATE BROKER

O: 662.268.6333 C: 662.317.0467

TWiseman@TomSmithLand.com

TomSmithLandandHomes.com



Expect More. Get More.



Information is believed to be accurate but not guaranteed.



# Flood Map



**A Real Estate Expert**  
*You Can Trust!*

**TOM WISEMAN**

ASSOCIATE BROKER

O: 662.268.6333 C: 662.317.0467

[TWiseman@TomSmithLand.com](mailto:TWiseman@TomSmithLand.com)

[TomSmithLandandHomes.com](http://TomSmithLandandHomes.com)



Expect More. Get More.



Information is believed to be accurate but not guaranteed.



# Topo Map



**A Real Estate Expert**  
*You Can Trust!*

**TOM WISEMAN**

ASSOCIATE BROKER

O: 662.268.6333 C: 662.317.0467

TWiseman@TomSmithLand.com

TomSmithLandandHomes.com



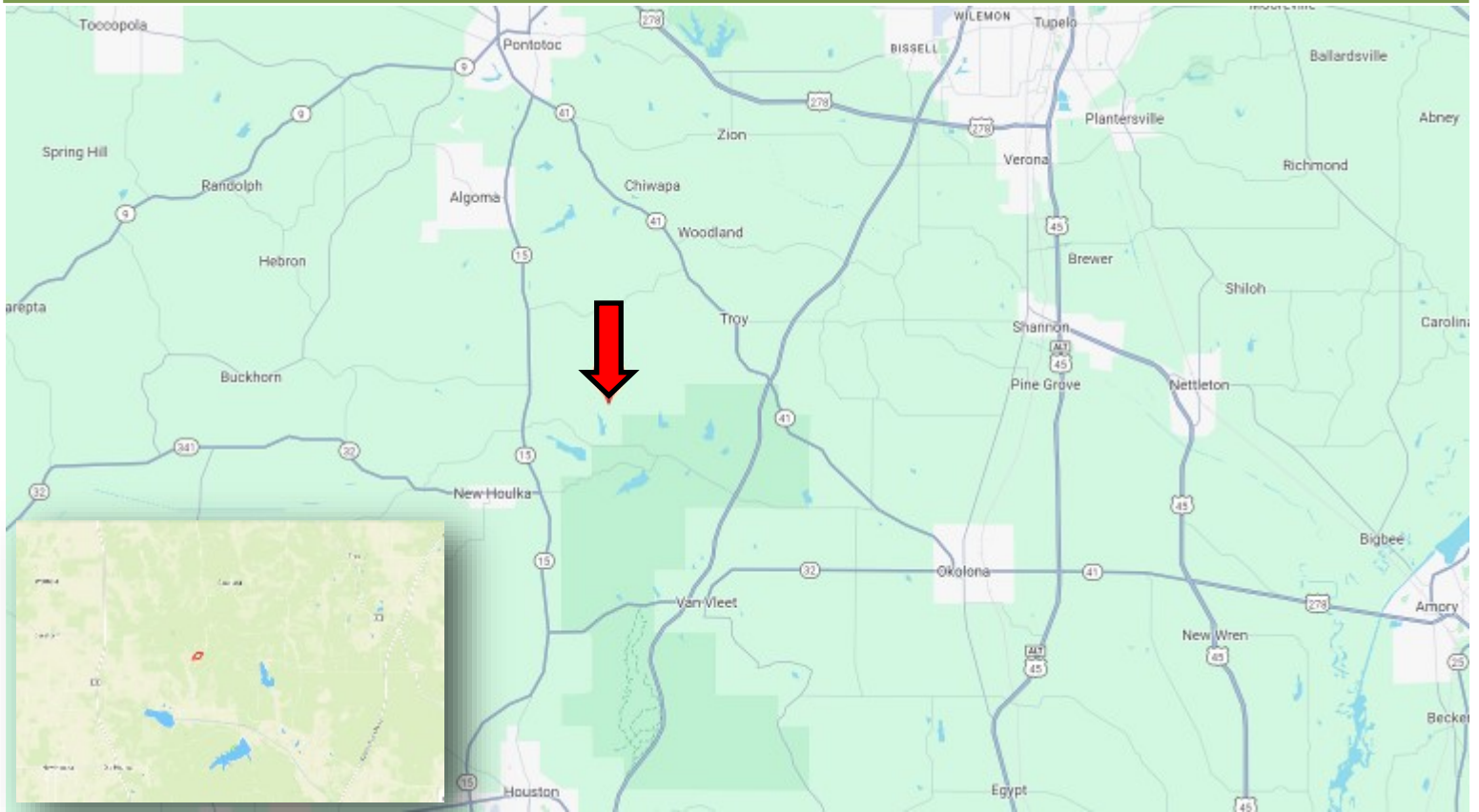
Expect More. Get More.



Information is believed to be accurate but not guaranteed.



# Directional Map



Directions from the intersection of Hwy 15 and Hwy 41 in Pontotoc, MS: Travel Hwy 15 south for 7.2 miles. Turn left onto Toxish Road and travel 2.8 miles. Turn right onto Goodfood Road and travel 2.4 miles. Turn right onto Mitchell Duke Road. After 1.0 mile, the property will be on the right.

Address: Mitchell Duke Rd, Pontotoc, MS 38863 [Google Maps Link](#)

**A Real Estate Expert**  
*You Can Trust!*

**TOM WISEMAN**

ASSOCIATE BROKER

O: 662.268.6333 C: 662.317.0467

TWiseman@TomSmithLand.com

TomSmithLandandHomes.com



Expect More. Get More.

Information is believed to be accurate but not guaranteed.

