

# Yield Map - 2023 Soybeans

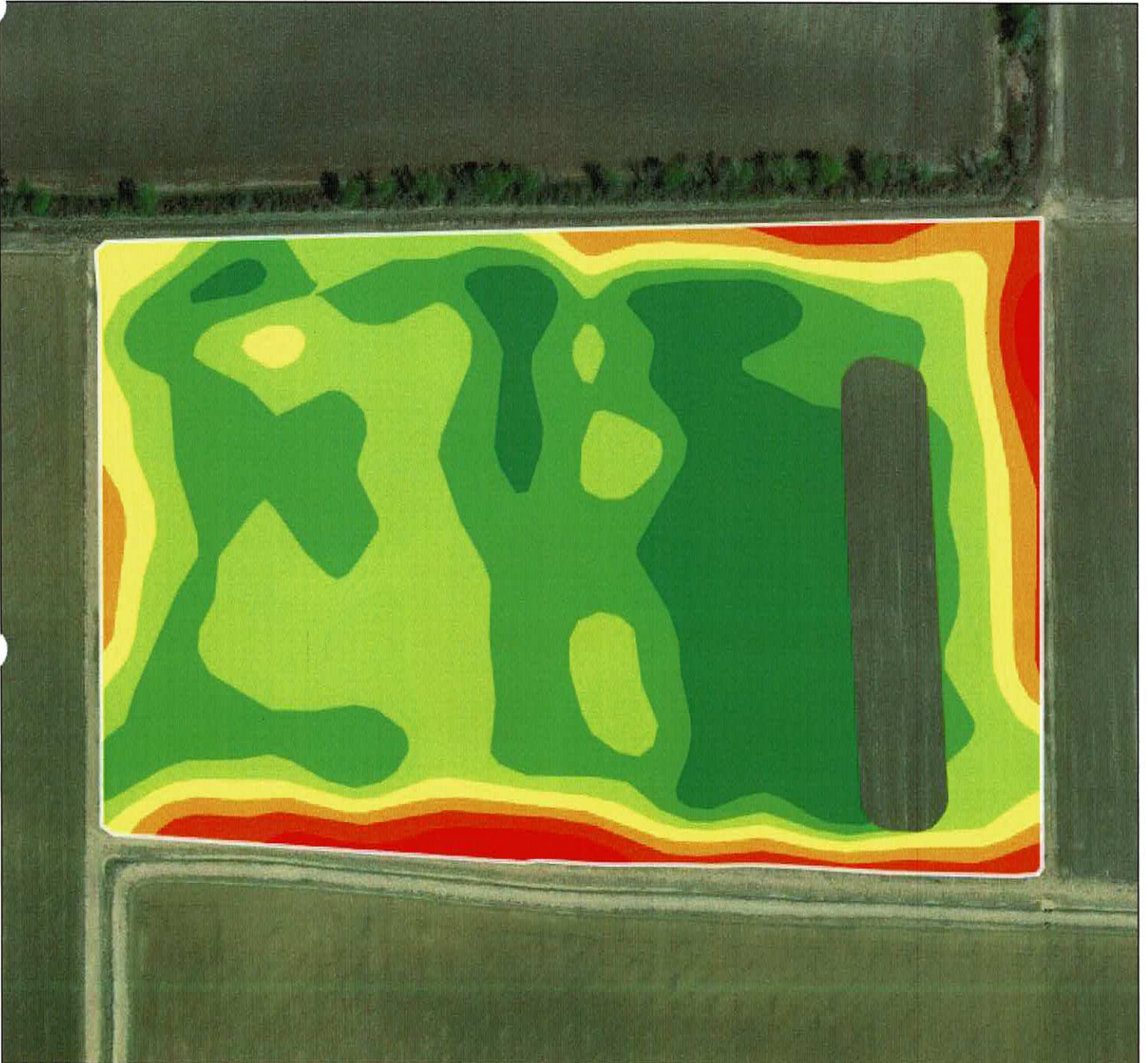


Maxar | Esri Community Maps Contributors, Arkansas GIS Office, Esri, HERE, Garmin, SafeGraph, GeoTechnologies, ... Powered by Esri

Max: 167.18 bu/ac  
Min: 25.05 bu/ac  
Avg: 70.13 bu/ac  
Total: 31,624 bu  
Coverage Area: 450.95 ac

Dry Yield (bu/ac)	
29.9 - 48.3	(13.61 ac)
48.3 - 56.9	(28.78 ac)
56.9 - 63.7	(63.08 ac)
63.7 - 69.3	(99.73 ac)
69.3 - 74.5	(116.07 ac)
74.5 - 79.3	(122.16 ac)
79.3 - 91.4	(76.29 ac)

# Yield Map - 2023 Soybeans

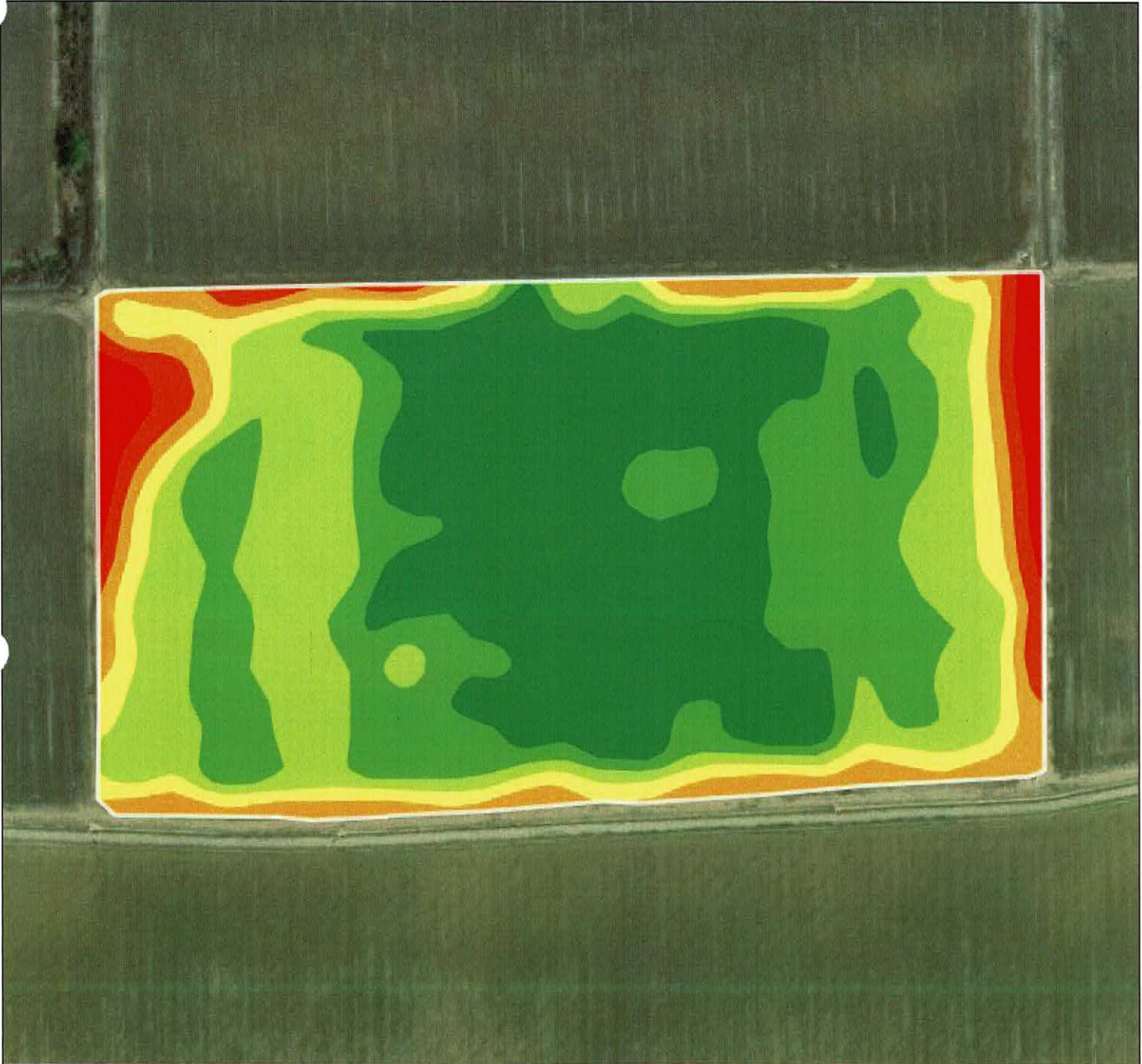


Maxar | Esri Community Maps Contributors, Arkansas GIS Office, © OpenStreetMap, Microsoft, Esri, HERE, Garmin, ... Powered by Esri

Max: 126.91 bu/ac  
Min: 37.68 bu/ac  
Avg: 76.11 bu/ac  
Total: 1,375 bu  
Coverage Area: 18.07 ac

Dry Yield (bu/ac)	
49.4 - 58	(0.56 ac)
58 - 64.6	(1.39 ac)
64.6 - 70	(1.97 ac)
70 - 74.8	(2.61 ac)
74.8 - 78.1	(9.32 ac)
78.1 - 81.3	(9.25 ac)
81.3 - 86.7	(5.56 ac)



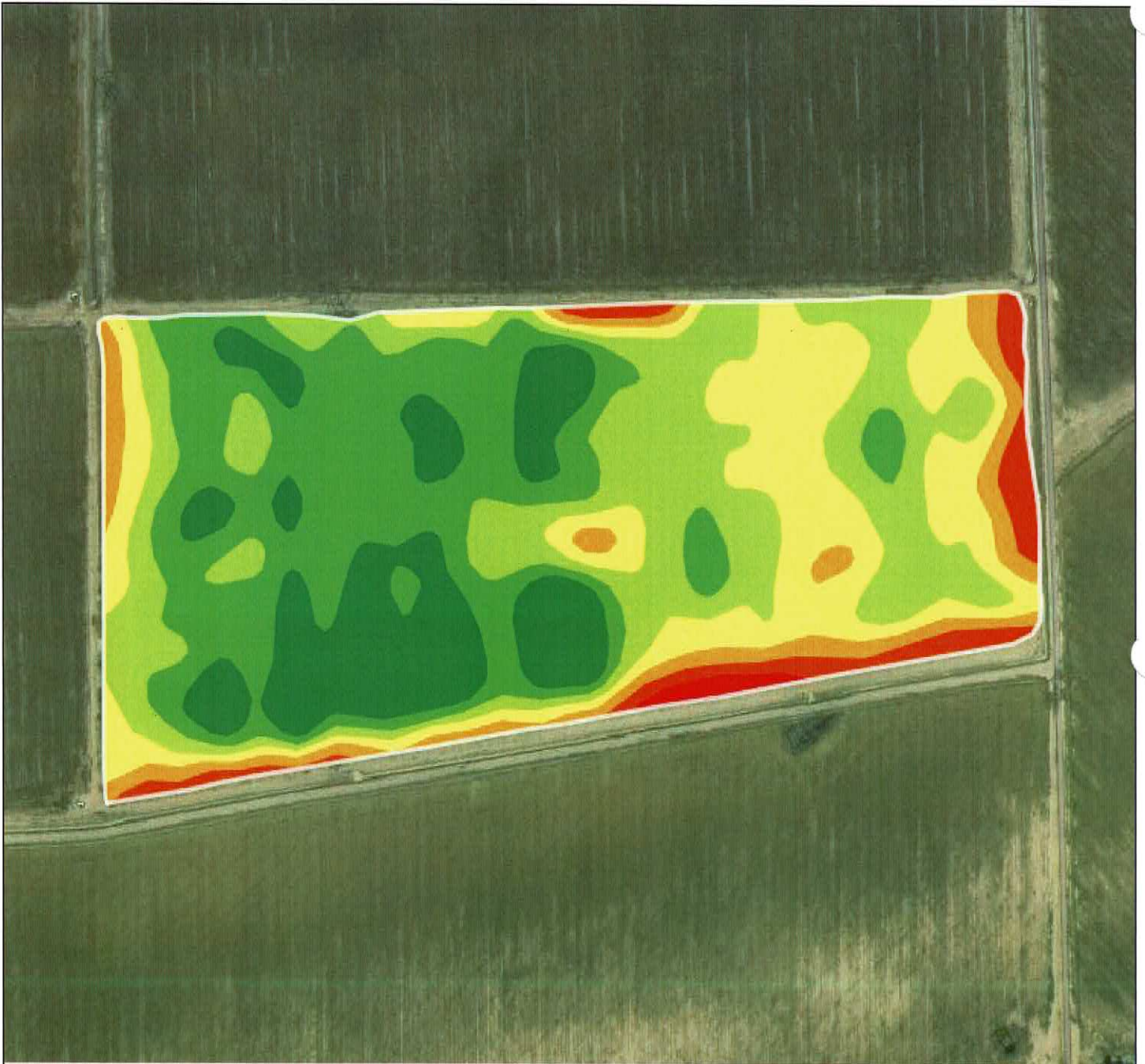


Maxar | Esri Community Maps Contributors, Arkansas GIS Office, © OpenStreetMap, Microsoft, Esri, HERE, Garmin, ... Powered by Esri

Max: 136.42 bu/ac  
Min: 29.56 bu/ac  
Avg: 74.96 bu/ac  
Total: 2,958 bu  
Coverage Area: 39.45 ac

Dry Yield (bu/ac)	
39.5 - 51.7	(1.12 ac)
51.7 - 59.6	(1.47 ac)
59.6 - 65.7	(3.58 ac)
65.7 - 71.5	(3.73 ac)
71.5 - 76	(10.45 ac)
76 - 79.5	(11.68 ac)
79.5 - 85.8	(14.78 ac)





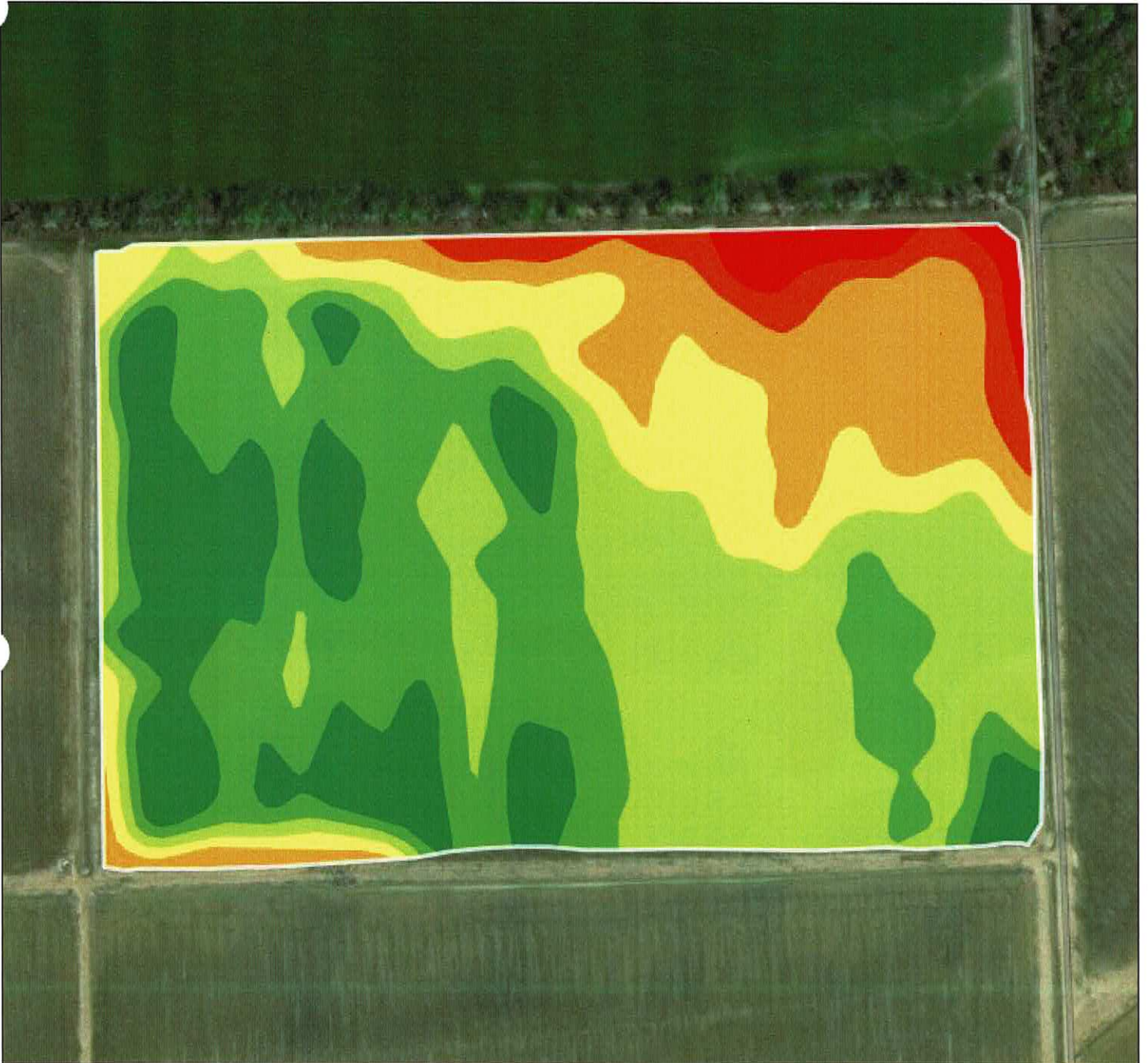
Maxar | Esri Community Maps Contributors, Arkansas GIS Office, © OpenStreetMap, Microsoft, Esri, HERE, Garmin, ... Powered by Esri

Max: 187.73 bu/ac  
Min: 31.63 bu/ac  
Avg: 73.96 bu/ac  
Total: 2,498 bu  
Coverage Area: 33.78 ac

Dry Yield (bu/ac)	
44 - 55	(0.27 ac)
55 - 63	(1.67 ac)
63 - 68	(2.59 ac)
68 - 72	(7.52 ac)
72 - 76	(10.17 ac)
76 - 79	(10.35 ac)
79 - 85	(5.88 ac)



# Yield Map - 2023 Soybeans



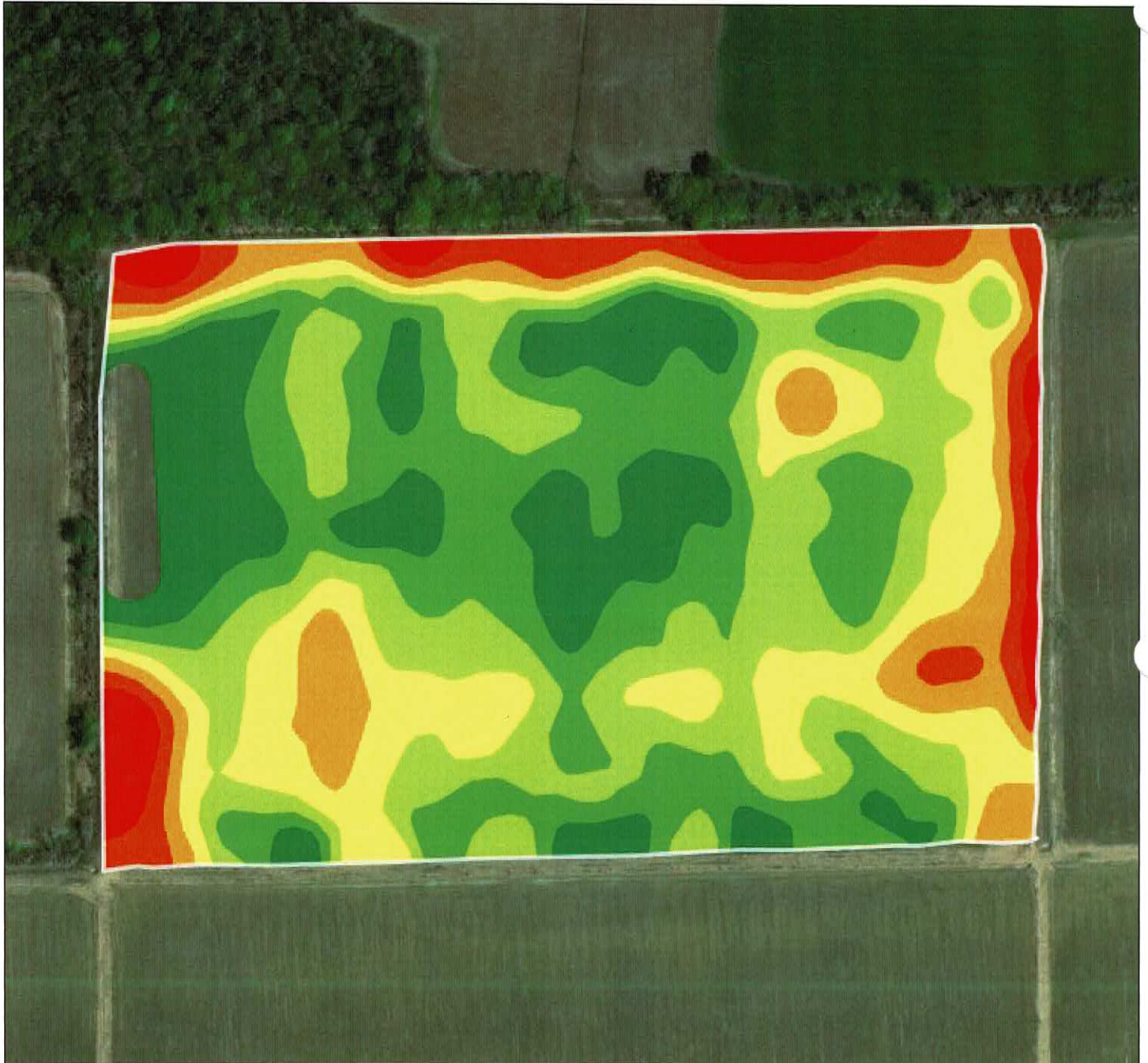
Maxar | Esri Community Maps Contributors, Arkansas GIS Office, © OpenStreetMap, Microsoft, Esri, HERE, Garmin, ... Powered by Esri

Max: 159.66 bu/ac  
Min: 35.37 bu/ac  
Avg: 72.77 bu/ac  
Total: 3,525 bu  
Coverage Area: 48.44 ac

### Dry Yield (bu/ac)

44 - 52.4	(1.12 ac)
52.4 - 59.3	(2.03 ac)
59.3 - 64.8	(6.76 ac)
64.8 - 70.3	(5.82 ac)
70.3 - 75.4	(15.37 ac)
75.4 - 79.4	(14.99 ac)
79.4 - 87.6	(8.37 ac)





Maxar | Esri Community Maps Contributors, Arkansas GIS Office, © OpenStreetMap, Microsoft, Esri, HERE, Garmin, ... Powered by Esri

Max: 119.7 bu/ac  
Min: 49.23 bu/ac  
Avg: 78.21 bu/ac  
Total: 3,464 bu  
Coverage Area: 44.29 ac

Dry Yield (bu/ac)	
57.5 - 65	(2.07 ac)
65 - 70.1	(3.41 ac)
70.1 - 74.2	(5.07 ac)
74.2 - 77.2	(9.11 ac)
77.2 - 79.5	(13.36 ac)
79.5 - 81.7	(13.93 ac)
81.7 - 86.9	(8.35 ac)



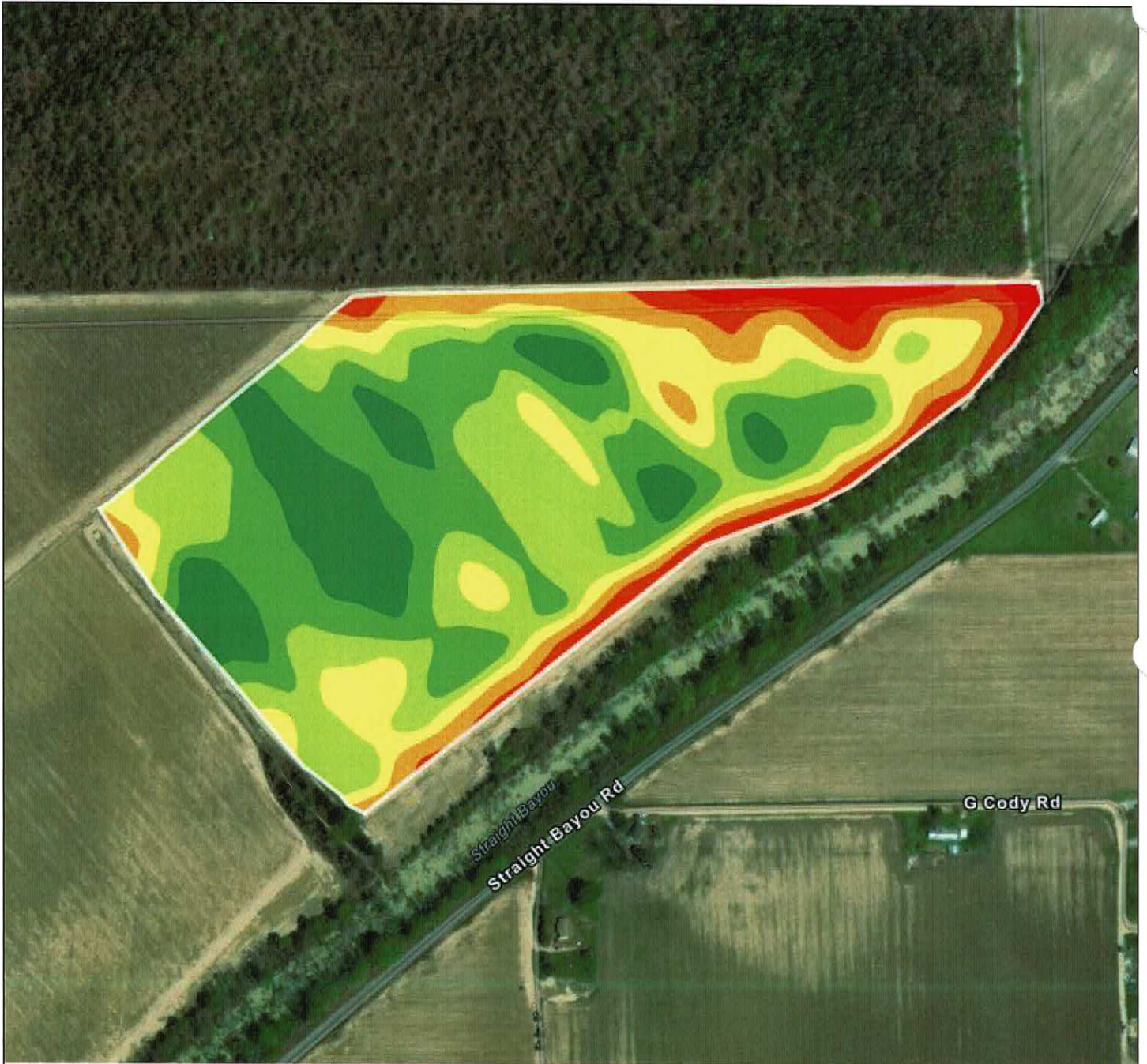


Maxar | Esri Community Maps Contributors, Arkansas GIS Office, © OpenStreetMap, Microsoft, Esri, HERE, Garmin, ... Powered by Esri

Max: 224.64 bu/ac  
Min: 1.99 bu/ac  
Avg: 67.2 bu/ac  
Total: 2,046 bu  
Coverage Area: 30.44 ac

Dry Yield (bu/ac)	
27 - 43	(2.42 ac)
43 - 52	(4.03 ac)
52 - 61	(5.26 ac)
61 - 68	(5.83 ac)
68 - 74	(6.55 ac)
74 - 80	(10.07 ac)
80 - 92	(6.56 ac)





Maxar | Esri Community Maps Contributors, Arkansas GIS Office, © OpenStreetMap, Microsoft, Esri, HERE, Garmin, ... Powered by Esri

Max: 174.89 bu/ac  
Min: 10.88 bu/ac  
Avg: 66.41 bu/ac  
Total: 2,498 bu  
Coverage Area: 37.61 ac

### Dry Yield (bu/ac)

30.8 - 43.7	(0.97 ac)
43.7 - 52.3	(2.74 ac)
52.3 - 59.8	(4.03 ac)
59.8 - 65.7	(6.56 ac)
65.7 - 69.9	(11.44 ac)
69.9 - 74	(11.21 ac)
74 - 83.4	(5.76 ac)





# Yield Map - 2023 Soybeans



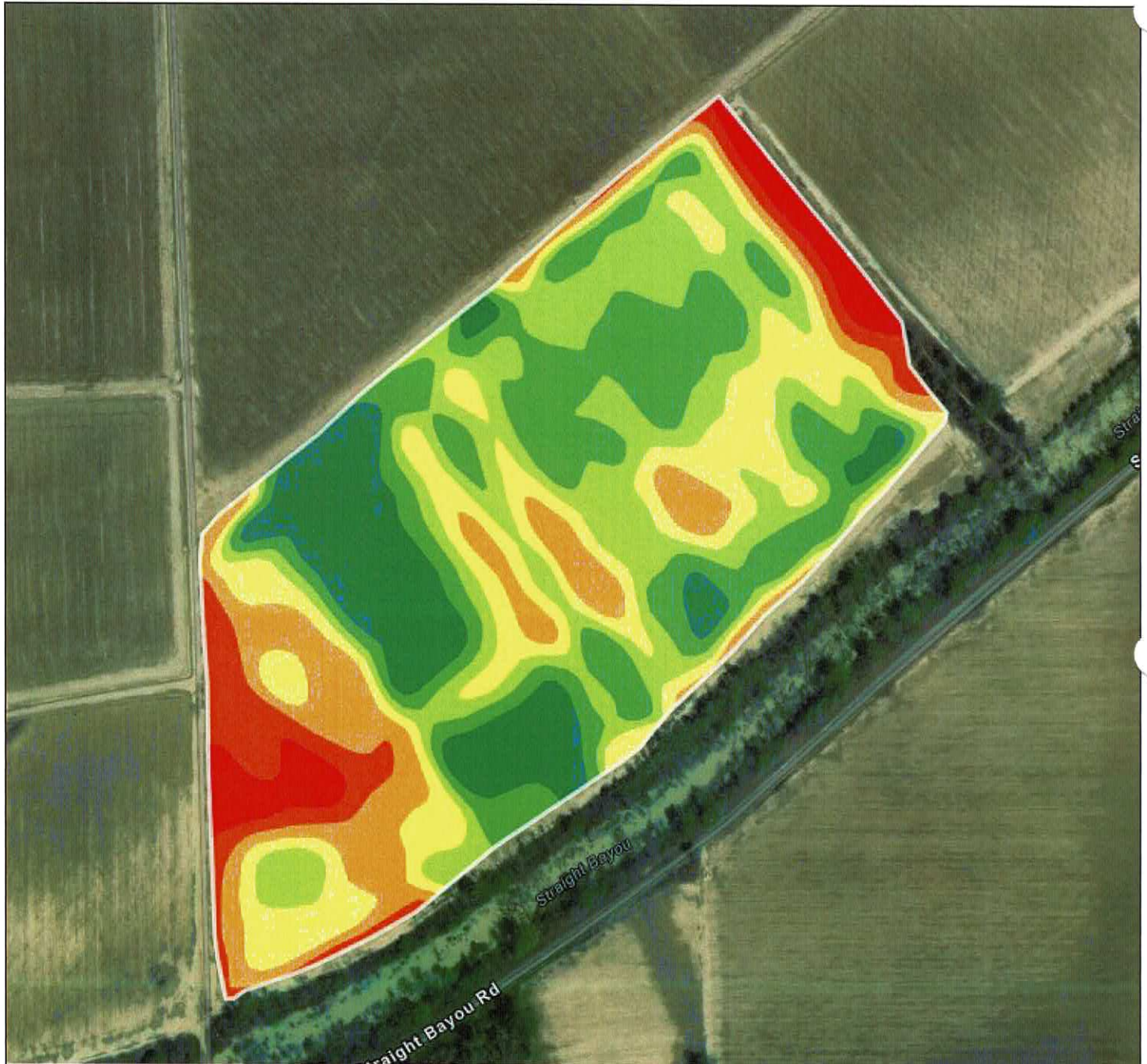
Maxar, Microsoft | Esri Community Maps Contributors, Arkansas GIS Office, © OpenStreetMap, Microsoft, Esri, HER... Powered by Esri

Max: 81.77 bu/ac  
Min: 2.01 bu/ac  
Avg: 36.41 bu/ac  
Total: 39 bu  
Coverage Area: 1.07 ac

Dry Yield (bu/ac)	
28.59 - 31.18	(0.3 ac)
31.18 - 33.88	(0.22 ac)
33.88 - 37.02	(0.25 ac)
37.02 - 41.25	(0.22 ac)
41.25 - 44.69	(0.14 ac)
44.69 - 48.4	(0.14 ac)
48.4 - 51.56	(0.07 ac)



# Yield Map - 2023 Soybeans



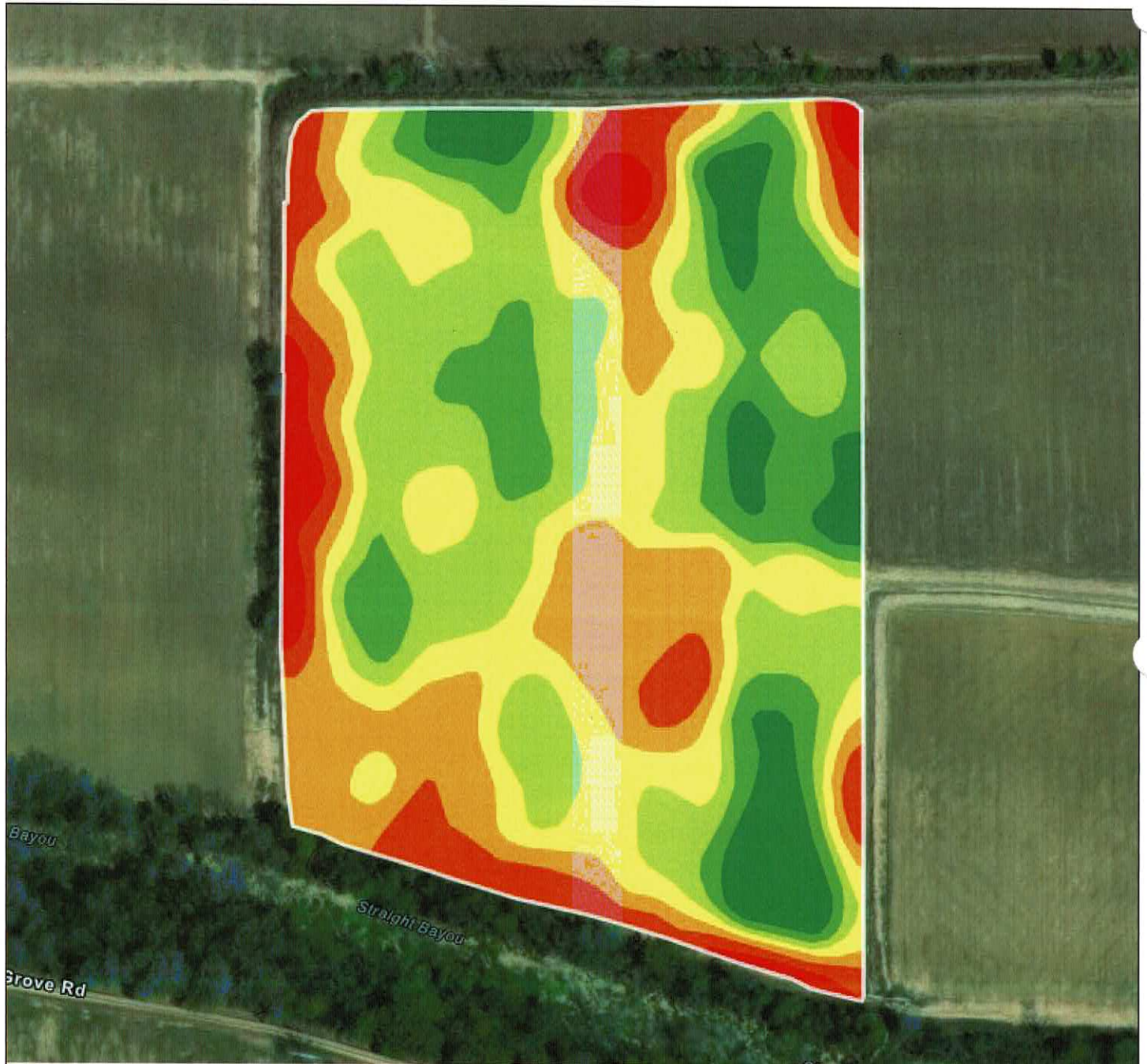
Maxar | Esri Community Maps Contributors, Arkansas GIS Office, © OpenStreetMap, Microsoft, Esri, HERE, Garmin, ... Powered by Esri

Max: 123.82 bu/ac  
Min: 32.41 bu/ac  
Avg: 67.45 bu/ac  
Total: 3,418 bu  
Coverage Area: 50.68 ac

### Dry Yield (bu/ac)

44 - 52.5	(2.48 ac)
52.5 - 59.1	(3.78 ac)
59.1 - 64	(7.75 ac)
64 - 67.8	(10.79 ac)
67.8 - 71.1	(13.41 ac)
71.1 - 74.8	(11.56 ac)
74.8 - 83.7	(7.05 ac)





Maxar | Esri Community Maps Contributors, Arkansas GIS Office, © OpenStreetMap, Microsoft, Esri, HERE, Garmin, ... Powered by Esri

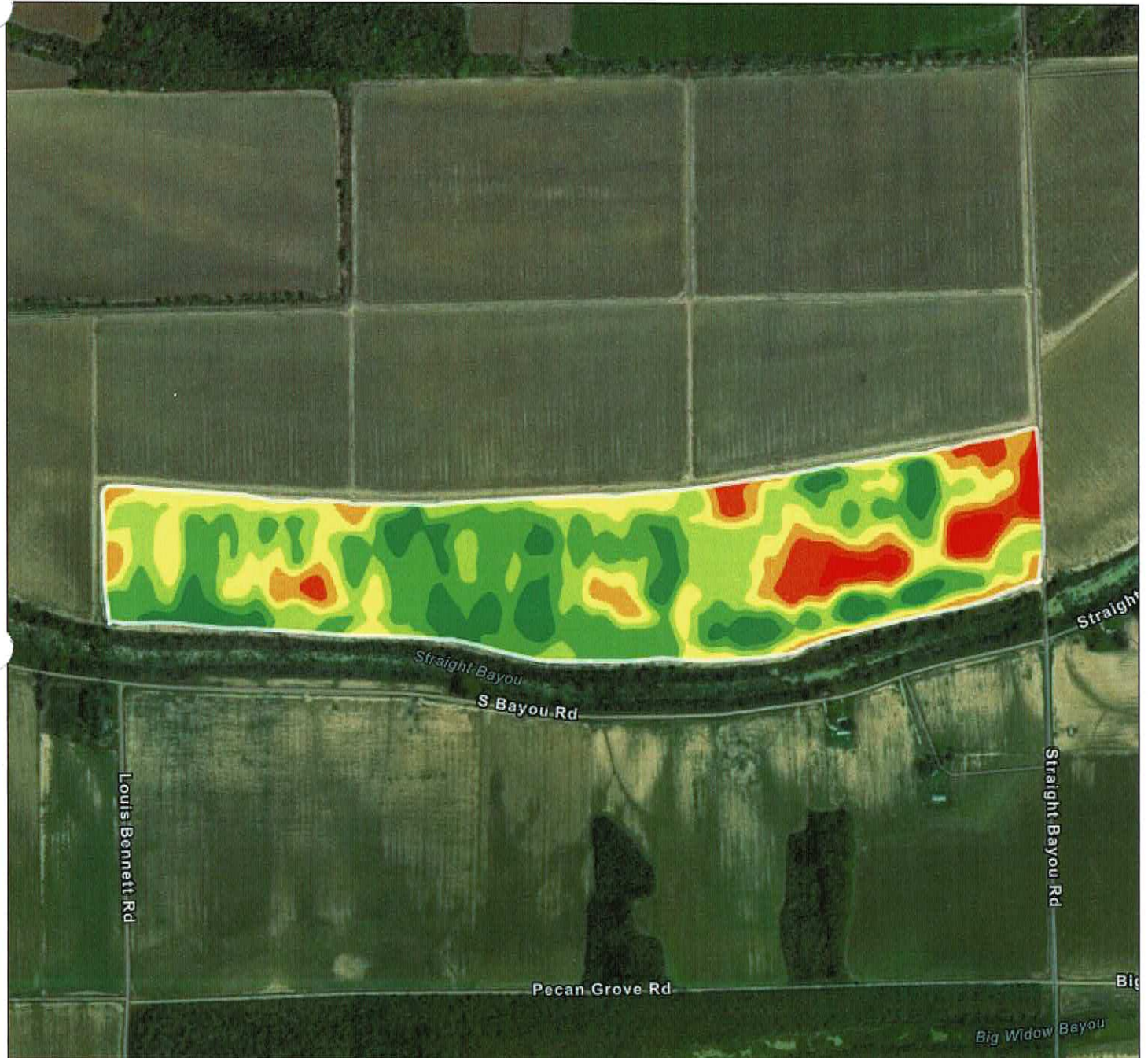
Max: 132.88 bu/ac  
Min: 52.23 bu/ac  
Avg: 79.32 bu/ac  
Total: 2,863 bu  
Coverage Area: 36.09 ac

### Dry Yield (bu/ac)

63.7 - 70.6	(1.39 ac)
70.6 - 74.2	(3.86 ac)
74.2 - 77.2	(7.73 ac)
77.2 - 79.8	(8.6 ac)
79.8 - 82.2	(11.01 ac)
82.2 - 84.9	(6.02 ac)
84.9 - 90.5	(2.97 ac)



# Yield Map - 2023 Soybeans



Maxar | Esri Community Maps Contributors, Arkansas GIS Office, © OpenStreetMap, Microsoft, Esri, HERE, Garmin, ... Powered by Esri

Max: 147.38 bu/ac  
 Min: 18.25 bu/ac  
 Avg: 63.38 bu/ac  
 Total: 5,927 bu  
 Coverage Area: 93.52 ac

Dry Yield (bu/ac)	
28 - 42	(3.15 ac)
42 - 51	(6.63 ac)
51 - 57.8	(10.23 ac)
57.8 - 63.2	(19.89 ac)
63.2 - 67.6	(27.81 ac)
67.6 - 71.9	(28.53 ac)
71.9 - 83.3	(11.78 ac)





Maxar, Microsoft | Esri Community Maps Contributors, Arkansas GIS Office, © OpenStreetMap, Microsoft, Esri, HER... Powered by Esri

Max: 62 bu/ac  
Min: 1.58 bu/ac  
Avg: 26 bu/ac  
Total: 45 bu  
Coverage Area: 1.75 ac

### Dry Yield (bu/ac)

15.05 - 18.77	(0.7 ac)
18.77 - 22.06	(0.7 ac)
22.06 - 26.46	(0.55 ac)
26.46 - 31.94	(0.12 ac)
31.94 - 36.36	(0.39 ac)
36.36 - 41.35	(0.27 ac)
41.35 - 46.56	(0.26 ac)

