

# 54± ACRE HUNTING PROPERTY

Leake County, MS



**\$110,000**

Experience your piece of nature with this 54± acre property in Leake County, Mississippi. Ideally located less than an hour from Madison and just off the Natchez Trace Parkway, this land is a haven for wildlife enthusiasts, offering deer, turkeys, and ducks at an affordable price. Highlights include a 6-acre slough that serves as a reliable water source for ducks and established food plots, making it a prime spot for hunting and outdoor recreation. Call Tyler today to schedule a private showing.



**TYLER  
KILGORE**  
REALTOR®

Office: 662.268.6333

Cell: 601.562.0688

Tyler@TomSmithLand.com



Expect More. Get More.

**A Real Estate Expert You Can Trust**

TomSmithLandandHomes.com

Information is believed to be accurate but not guaranteed.





# A Real Estate Expert *You Can Trust!*

**TYLER KILGORE**  
REALTOR®

O: 662.268.6333 C: 601.562.0688

Tyler@TomSmithLand.com

TomSmithLandandHomes.com



Expect More. Get More.





**A Real Estate Expert**  
*You Can Trust!*

**TYLER KILGORE**  
REALTOR®

O: 662.268.6333 C: 601.562.0688

Tyler@TomSmithLand.com

TomSmithLandandHomes.com



Expect More. Get More.



Information is believed to be accurate but not guaranteed.



**A Real Estate Expert**  
*You Can Trust!*



Expect More. Get More.

**TYLER KILGORE**  
 REALTOR®

O: 662.268.6333 C: 601.562.0688

Tyler@TomSmithLand.com

TomSmithLandandHomes.com



Information is believed to be accurate but not guaranteed.



**A Real Estate Expert**  
*You Can Trust!*

**TYLER KILGORE**  
REALTOR®

O: 662.268.6333 C: 601.562.0688

Tyler@TomSmithLand.com

TomSmithLandandHomes.com

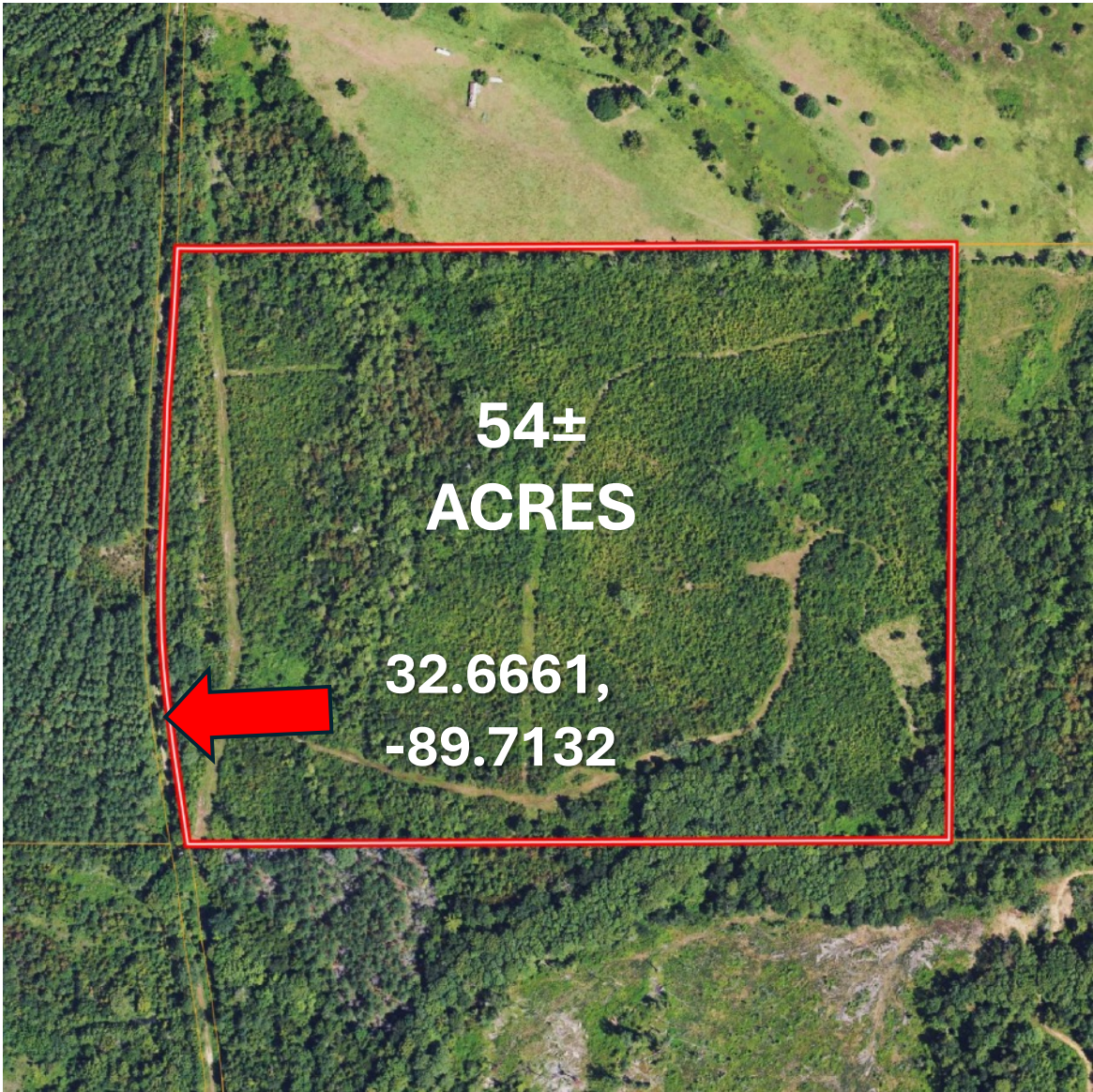


Expect More. Get More.



Information is believed to be accurate but not guaranteed.

# AERIAL MAP



[INTERACTIVE MAP LINK](#)

**A Real Estate Expert**  
*You Can Trust!*

**TYLER KILGORE**  
REALTOR®

O: 662.268.6333 C: 601.562.0688

Tyler@TomSmithLand.com

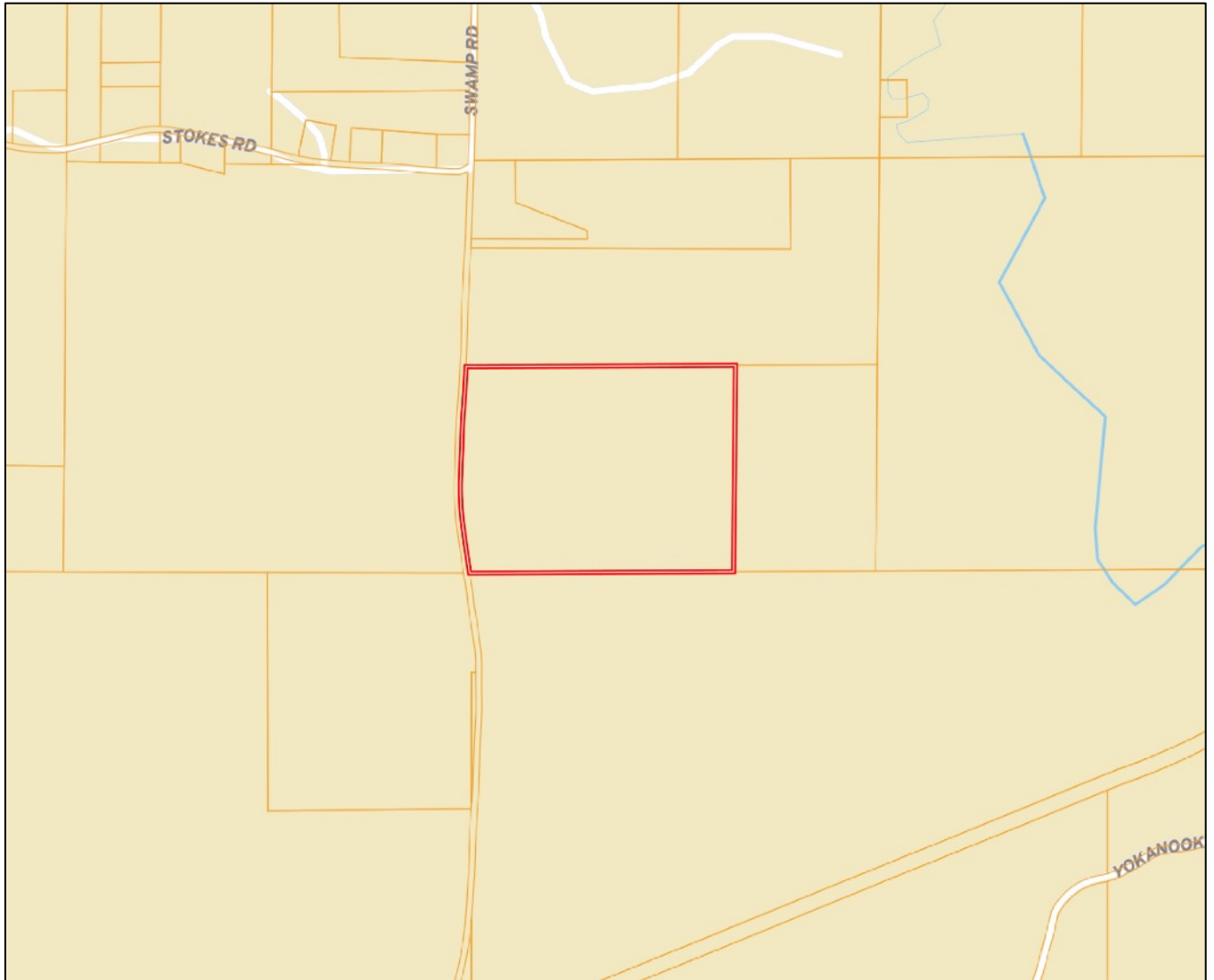
TomSmithLandandHomes.com



Expect More. Get More.



# OWNERSHIP MAP



**A Real Estate Expert**  
*You Can Trust!*

**TYLER KILGORE**  
REALTOR®

O: 662.268.6333 C: 601.562.0688

Tyler@TomSmithLand.com

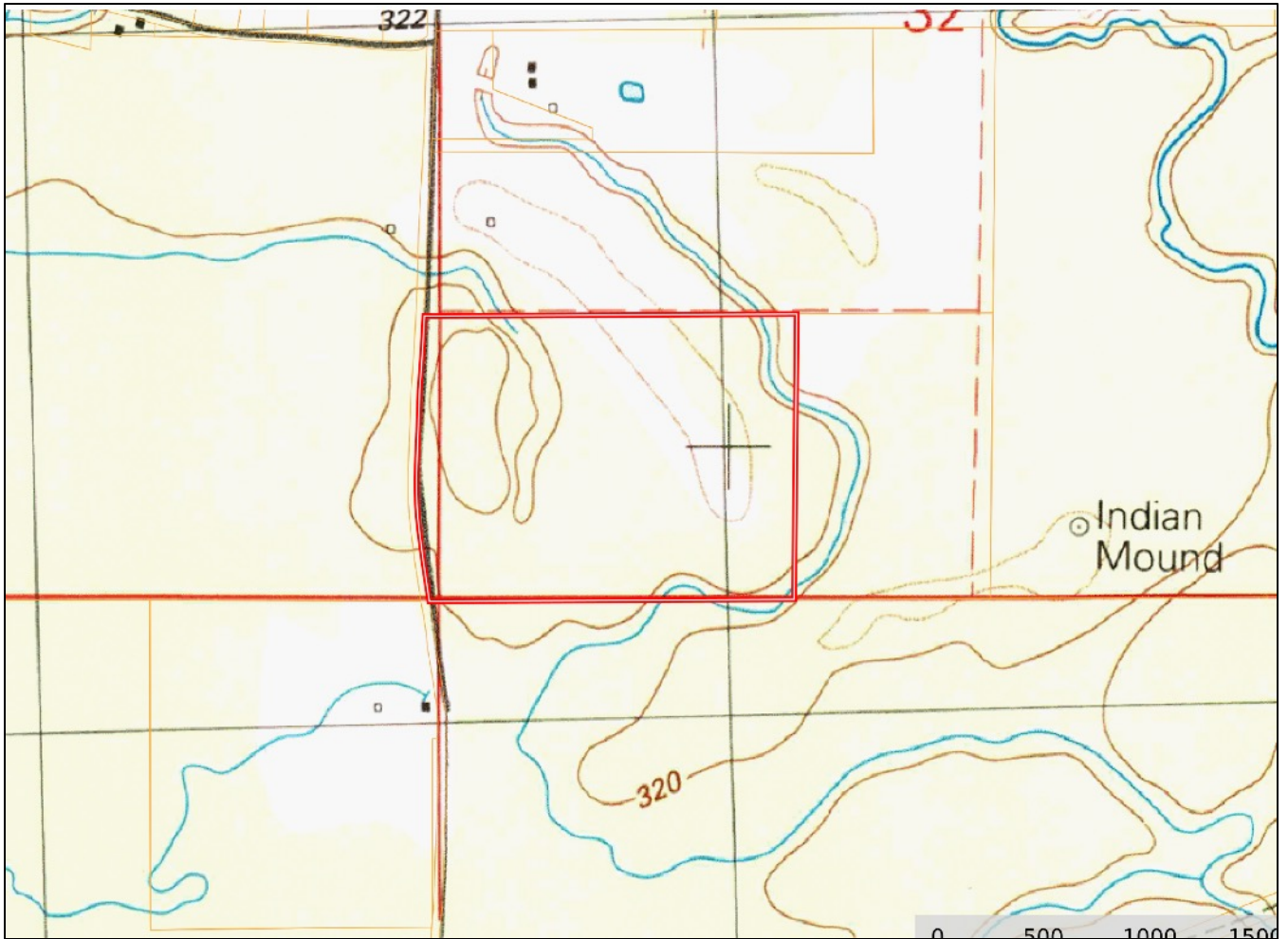
TomSmithLandandHomes.com



Expect More. Get More.



# TOPOGRAPHY MAP



**A Real Estate Expert**  
*You Can Trust!*

**TYLER KILGORE**  
REALTOR®

O: 662.268.6333 C: 601.562.0688

Tyler@TomSmithLand.com

TomSmithLandandHomes.com



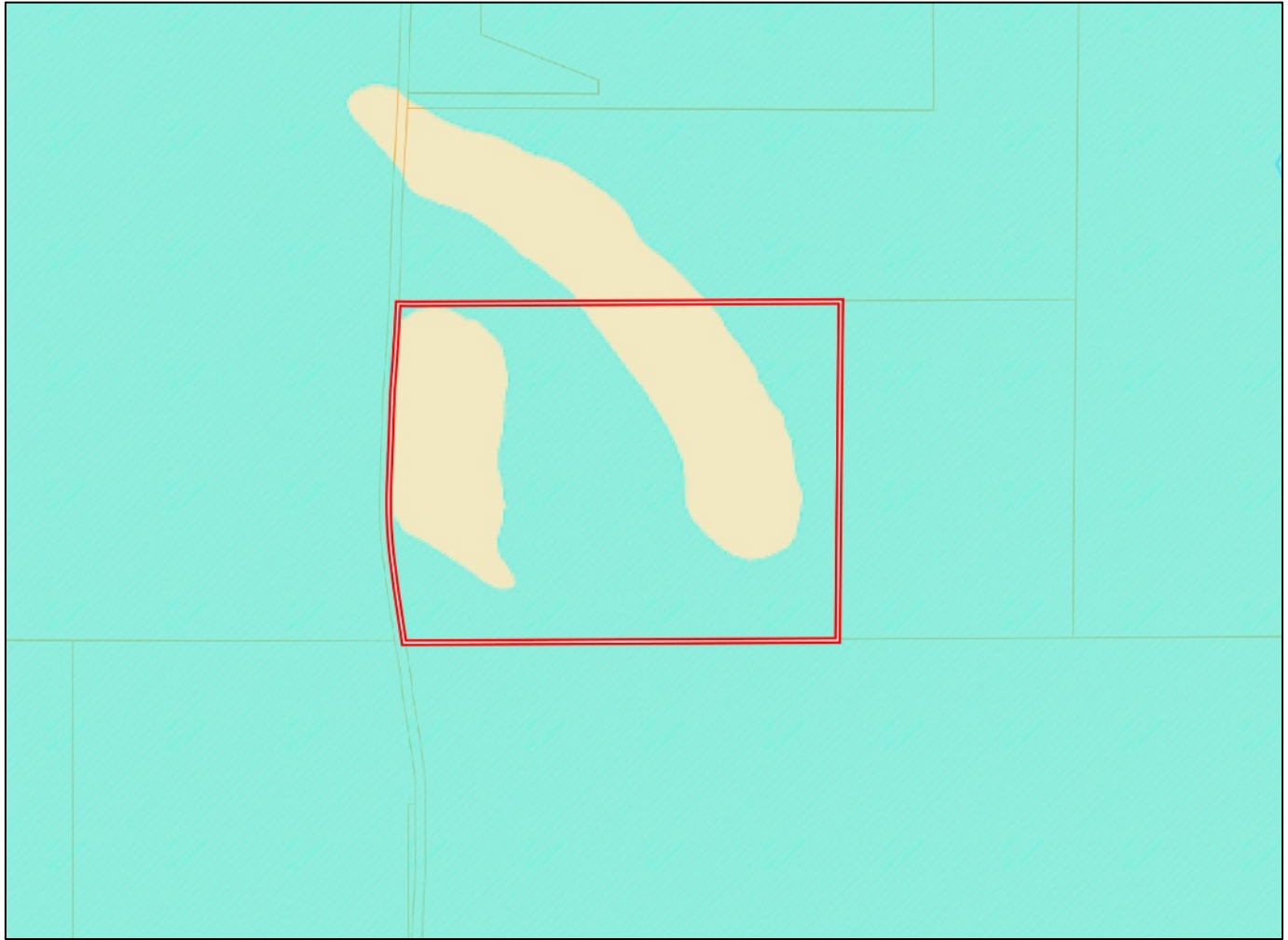
Expect More. Get More.



Information is believed to be accurate but not guaranteed.



# FLOOD MAP



**A Real Estate Expert**  
*You Can Trust!*

**TYLER KILGORE**  
REALTOR®

O: 662.268.6333 C: 601.562.0688

Tyler@TomSmithLand.com

TomSmithLandandHomes.com

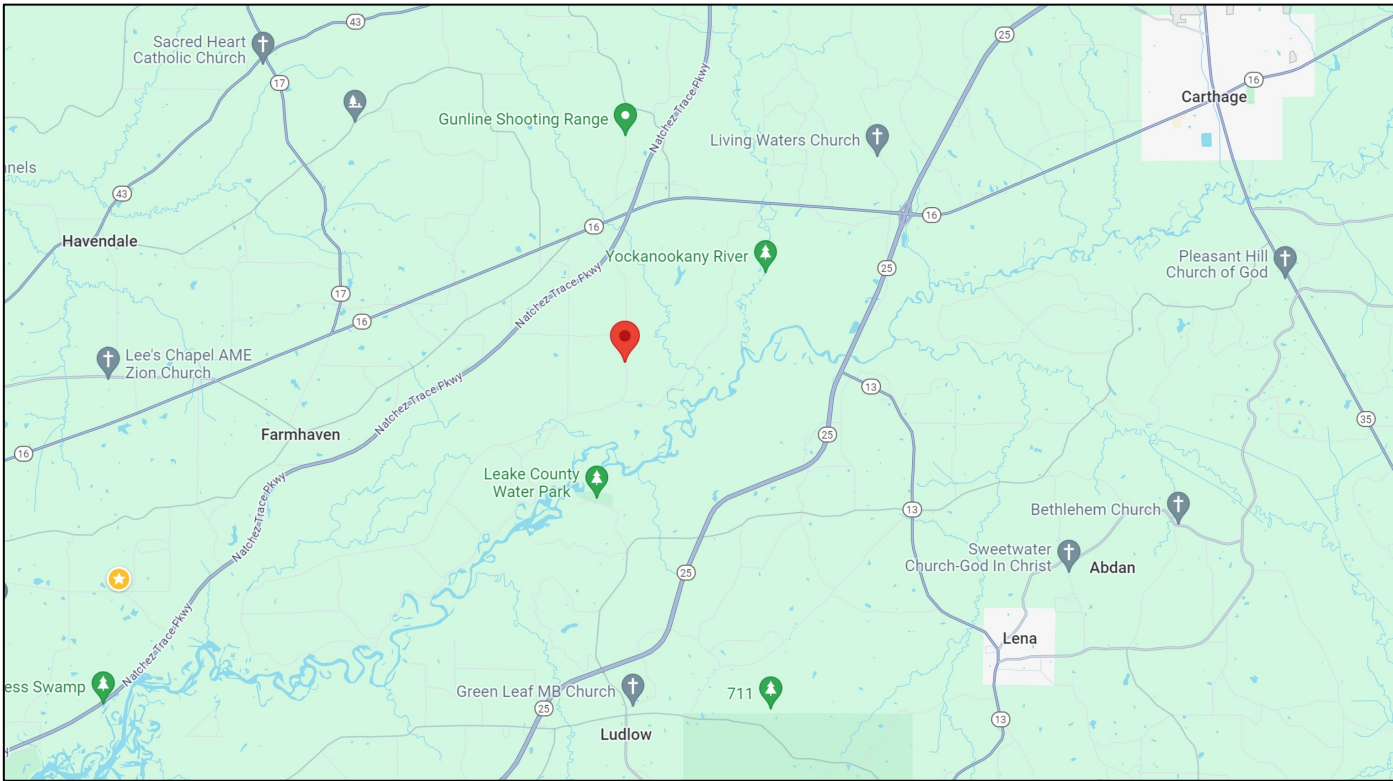


Expect More. Get More.



Information is believed to be accurate but not guaranteed.

# DIRECTIONAL MAP



**Directions from the Natchez Trace Parkway and Swamp Road in Carthage, MS:**  
Travel Swamp Road for 2 miles. The property will be on your left. [Google Map Link](#)



**TYLER  
KILGORE**  
REALTOR®

Office: 662.268.6333

Cell: 601.562.0688

Tyler@TomSmithLand.com



Expect More. Get More.

**A Real Estate Expert You Can Trust**

TomSmithLandandHomes.com

Information is believed to be accurate but not guaranteed.

