

10.1± ACRE MINI-FARM IN WEBSTER COUNTY, MS



\$60,000

Are you looking to build your dream home in the country? This 10.1± acres in Webster County, MS, is your ideal spot. Located in Mantee, MS, the property is ready for construction with all essential utilities—power, water, and internet—already installed. Access is easy with a gated entrance and a well-maintained driveway. Finding a tract of this size with full utilities is rare. To schedule a private showing, call or text Walker! Additional Acreage Available



**WALKER
TRANUM**
REALTOR®

Office: 662.268.6333
Cell: 662.769.1442
Walker@TomSmithHomes.com



Expect More. Get More.

A Real Estate Expert You Can Trust
TomSmithLandandHomes.com

Information is believed to be accurate but not guaranteed.





A Real Estate Expert
You Can Trust!

WALKER TRANUM

REALTOR®

O: 662.268.6333 C: 662.769.1442

Walker@TomSmithHomes.com

TomSmithLandandHomes.com



Expect More. Get More.



Information is believed to be accurate but not guaranteed.

Aerial Map



Click [Here](#) for an Interactive Map Link

A Real Estate Expert
You Can Trust!

WALKER TRANUM

REALTOR®

O: 662.268.6333 C: 662.769.1442

Walker@TomSmithHomes.com

TomSmithLandandHomes.com

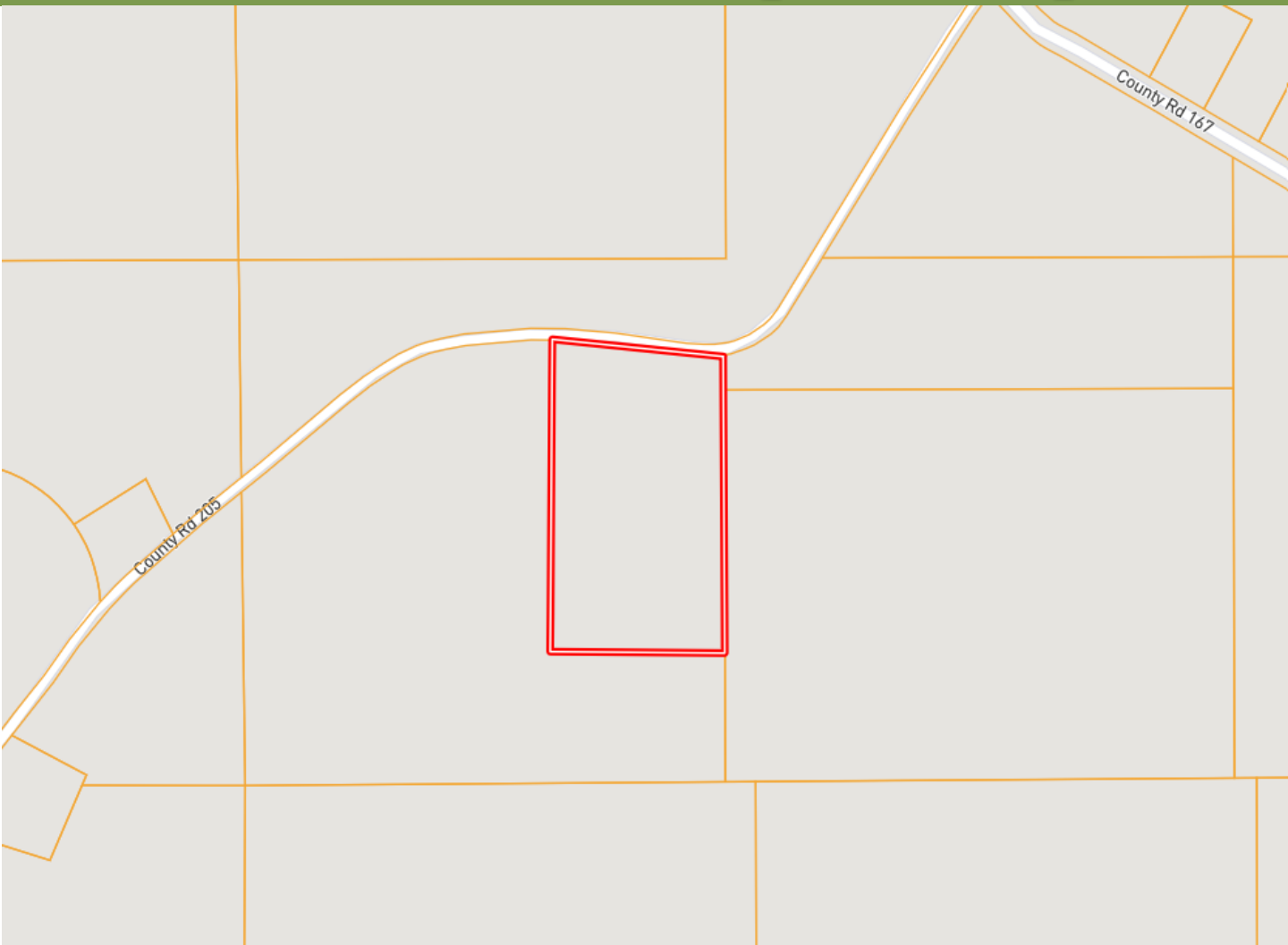


Expect More. Get More.



Information is believed to be accurate but not guaranteed.

Ownership Map



A Real Estate Expert
You Can Trust!

WALKER TRANUM

REALTOR®

O: 662.268.6333 C: 662.769.1442

Walker@TomSmithHomes.com

TomSmithLandandHomes.com

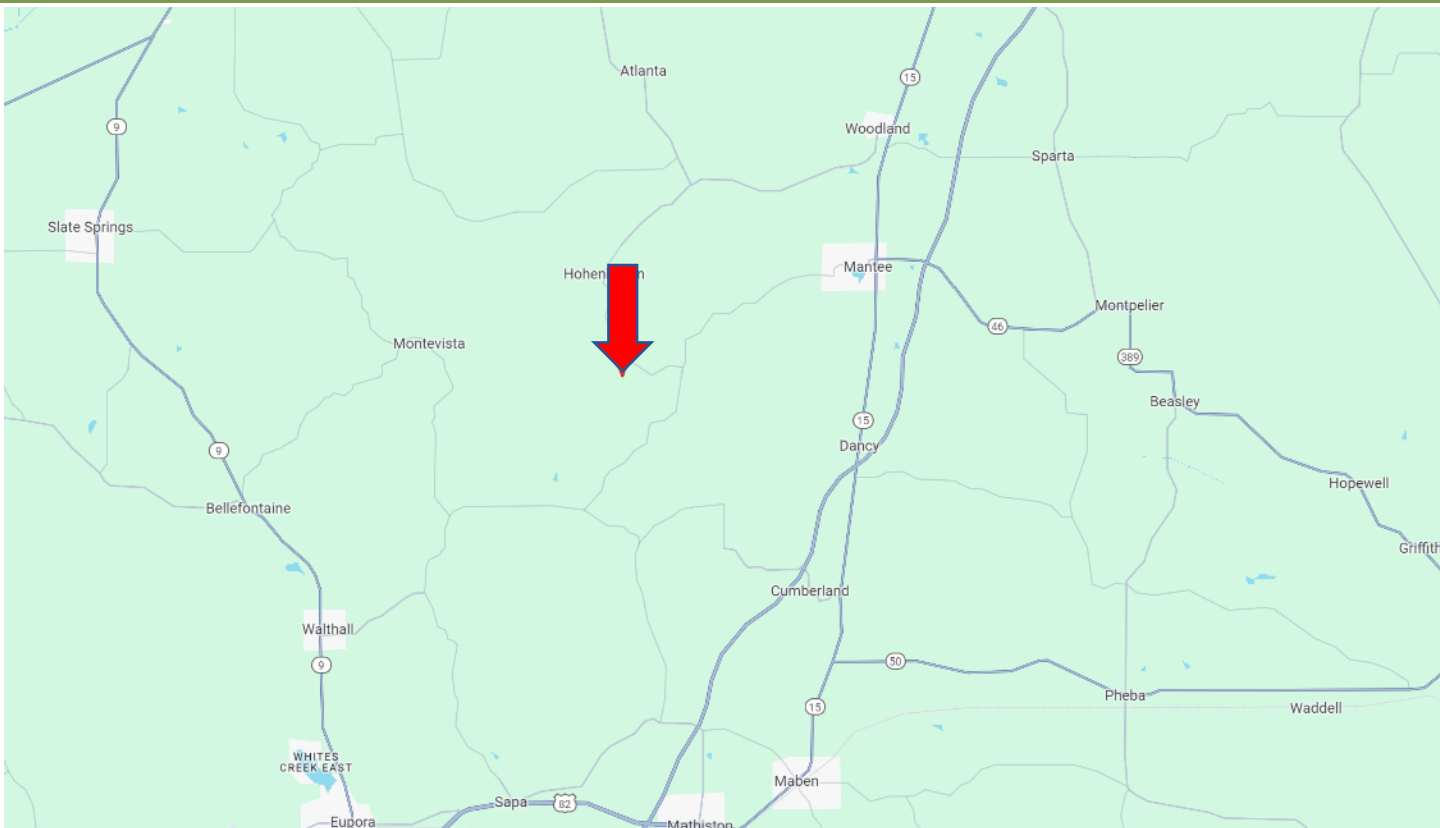


Expect More. Get More.



Information is believed to be accurate but not guaranteed.

Directional Map



Directions from Hwy 15 in Mantee, MS: Turn onto Main Street towards First Street and travel 1.3 miles. Continue onto Mantee Road for 4.4 miles. Turn right onto Hohenlinden Road and travel 1.4 miles. Turn left onto Savannah Lake Road. After 0.4 miles, the property will be on your left. [Google Map Link](#)



**WALKER
TRANUM**
REALTOR®

Office: 662.268.6333
Cell: 662.769.1442
Walker@TomSmithHomes.com



Expect More. Get More.

A Real Estate Expert You Can Trust
TomSmithLandandHomes.com

Information is believed to be accurate but not guaranteed.

