

# 8-Unit Apartment Complex - Investment Property



**\$489,000**

## 4278 & 4280 Highway 8, Cleveland, MS 38732

This 8-unit apartment complex in Bolivar County, MS, has Highway 8 road frontage and could be an excellent addition to any investor's portfolio, as it generates over \$6,000 in monthly rent. The property features two fourplexes on a slab and a privacy-fenced lot. The parcel extends north with a total of 4.04± acres, creating the potential for further development. Residential investment properties in a college town are highly sought after, so take advantage of it! Contact Tracey Bell to schedule your private showing and discover more about this income-generating property. [Drone Video Link](#)



**TRACEY  
BELL**

MANAGING BROKER

Office: 662.441.2500

Cell: 662.719.4720

[Tracey@TomSmithLand.com](mailto:Tracey@TomSmithLand.com)



Expect More. Get More.

**A Real Estate Expert You Can Trust**

[TomSmithLandandHomes.com](http://TomSmithLandandHomes.com)

Information is believed to be accurate but not guaranteed.





- **Annual Income:** \$72,360
- **Taxes:** \$6,617 Annually
- **Insurance:** \$4,200 Annually

- **Water:** \$5,280 Annually
- **Lawn Maintenance:** \$2,100 Annually
- **Waste Management:** \$1,800 Annually



**A Real Estate Expert**  
*You Can Trust!*

**TRACEY BELL**

MANAGING BROKER

O: 662.441.2500 C: 662.719.4720

Tracey@TomSmithLand.com

TomSmithLandandHomes.com



Expect More. Get More.



Information is believed to be accurate but not guaranteed.



**A Real Estate Expert**  
*You Can Trust!*

**TRACEY BELL**

MANAGING BROKER

O: 662.441.2500 C: 662.719.4720

Tracey@TomSmithLand.com

TomSmithLandandHomes.com



Expect More. Get More.



Information is believed to be accurate but not guaranteed.



**A Real Estate Expert  
You Can Trust!**

**TRACEY BELL**

MANAGING BROKER

O: 662.441.2500 C: 662.719.4720

Tracey@TomSmithLand.com

TomSmithLandandHomes.com

**Tom  
Smith  
LAND AND  
HOMES**

Expect More. Get More.

2011-2024  
**BEST  
BROKERAGES**

Information is believed to be accurate but not guaranteed.



**A Real Estate Expert**  
*You Can Trust!*

**TRACEY BELL**

MANAGING BROKER

O: 662.441.2500 C: 662.719.4720

Tracey@TomSmithLand.com

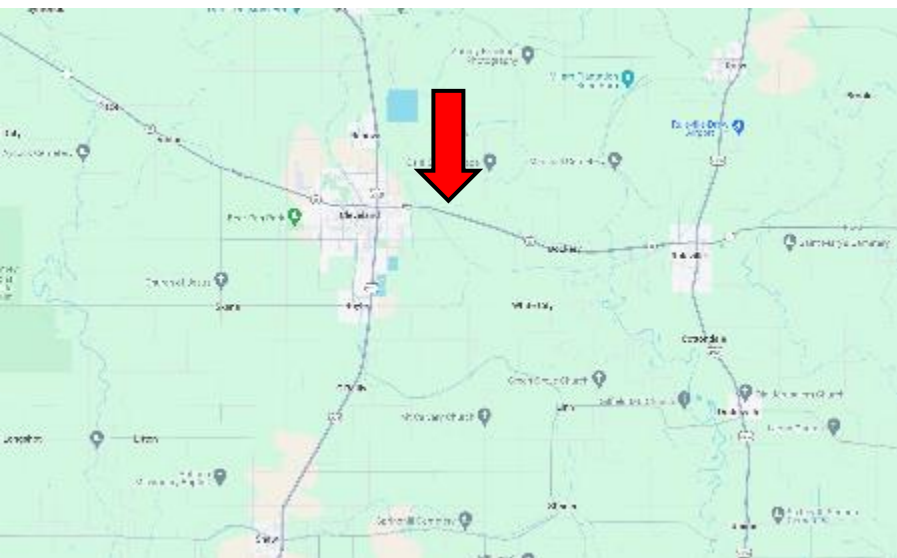
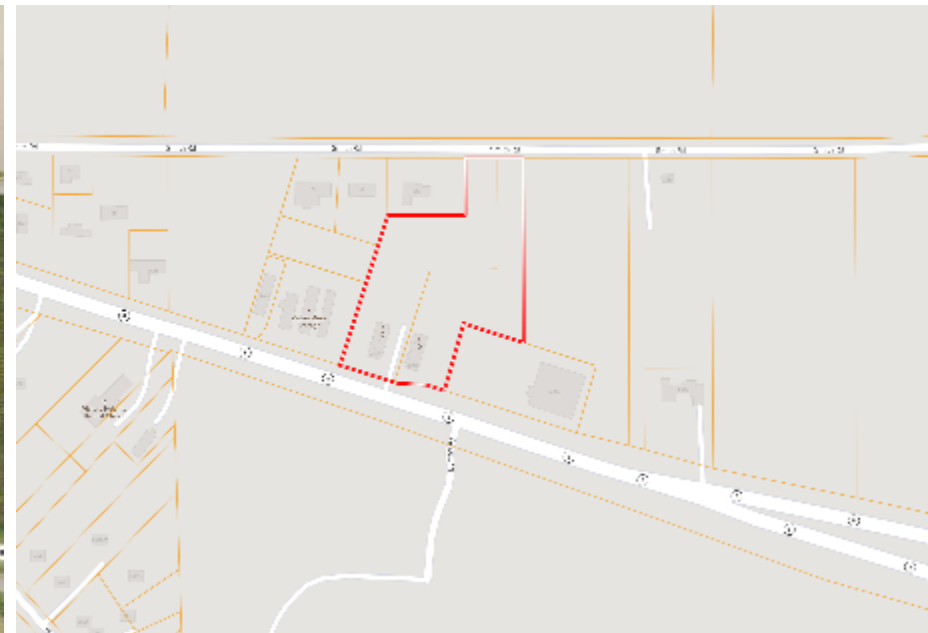
TomSmithLandandHomes.com



Expect More. Get More.



Information is believed to be accurate but not guaranteed.



**Address:** 4280 HWY 8, Cleveland, MS 38732

**Directions from Hwy 8 & Hwy 61 in Cleveland, MS:** Travel east on Highway 8 for 1.9 miles. The destination will be on the left.  
[Click for Google Maps.](#)

**Lot Size:** 4.04± Acres

**Latitude & Longitude:** 33.7458, -90.6829

**Distance to Ruleville:** 8 Miles

**Distance to Delta State University:** 3 Miles



**TRACEY BELL**  
 MANAGING BROKER  
 Office: 662.441.2500  
 Cell: 662.719.4720  
[Tracey@TomSmithLand.com](mailto:Tracey@TomSmithLand.com)



**A Real Estate Expert You Can Trust**  
[TomSmithLandandHomes.com](http://TomSmithLandandHomes.com)

