

# 0.49± Acre Residential Development Lot in Cleveland



**\$15,000**

Take advantage of this excellent opportunity to build your dream home on this 0.49± acre lot in Cleveland, Bolivar County! The property is located within the Cleveland city limits and offers easy access to electricity, water, and sewer services. Don't miss out—Contact Charlie Heinsz today to schedule your private showing and learn more about this property!



**CHARLIE  
HEINSZ**

REALTOR®

Office: 662.441.2500

Cell: 662.719.7218

Charlie@TomSmithLand.com



Expect More. Get More.

**A Real Estate Expert You Can Trust**

TomSmithLandandHomes.com

Information is believed to be accurate but not guaranteed.





*A Real Estate Expert  
You Can Trust!*

**CHARLIE HEINSZ**  
REALTOR®

O: 662.441.2500 C: 662.719.7218

Charlie@TomSmithLand.com

TomSmithLandandHomes.com

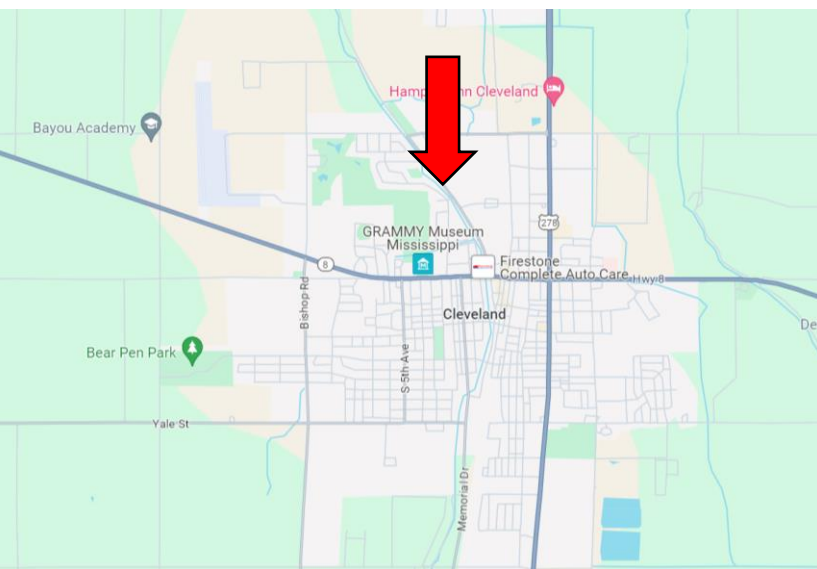
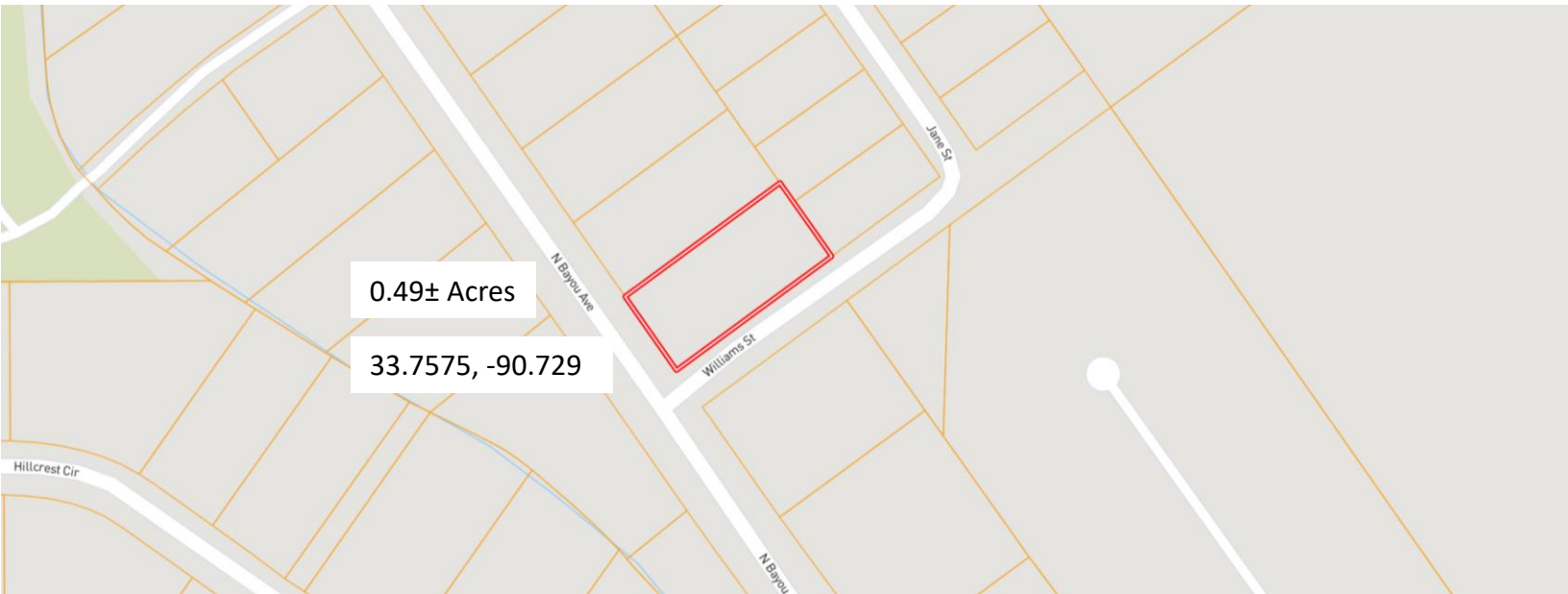


Expect More. Get More.



Information is believed to be accurate but not guaranteed.

# MAPS | [Click for Interactive Map](#)



Address: 626 N. Bayou Avenue  
Cleveland, MS 38732

Directions from Hwy 8 & Hwy 61 in Cleveland:

Travel west on Hwy 8 for 0.4 miles. Turn right on N. Bayou Ave. After 0.75 miles, the property will be on the right.

[Click for Google Maps](#)



**CHARLIE  
HEINSZ**  
REALTOR®

Office: 662.441.2500

Cell: 662.719.7218

Charlie@TomSmithLand.com



Expect More. Get More.

**A Real Estate Expert You Can Trust**

TomSmithLandandHomes.com

Information is believed to be accurate but not guaranteed.

