



108.4± Acre Investment/Homesite Tract in Lafayette County, MS



\$561,800

Have you been looking country living homesite with great potential? Look no further than this 108.4± acre tract in Lafayette County, MS, roughly 20 minutes south of Oxford. This tract is in an ideal location to develop your country homesite with a gravel drive or create your own food plot locations. 74.2± acres were replanted in loblolly pines in 2020, the remaining 31.7± acres are mature hardwoods with scattered pine pockets. The property consists of beautiful rolling hills with Dickey Creek traversing the western boundary of the property, providing an excellent water source for the local wildlife. There's also a potential lake site on the property. Utilities are available and there's road frontage of CR 428. Call Kadero Edley today to schedule your private viewing!



KADERO EDLEY REALTOR®

Office: 601.898.2772
Cell: 601.488.7000
Kadero@TomSmithLand.com



A Real Estate Expert You Can Trust

TomSmithLandandHomes.com





KADERO EDLEY
REALTOR®
Office: 601.898.2772
Cell: 601.488.7000
Kadero@TomSmithLand.com



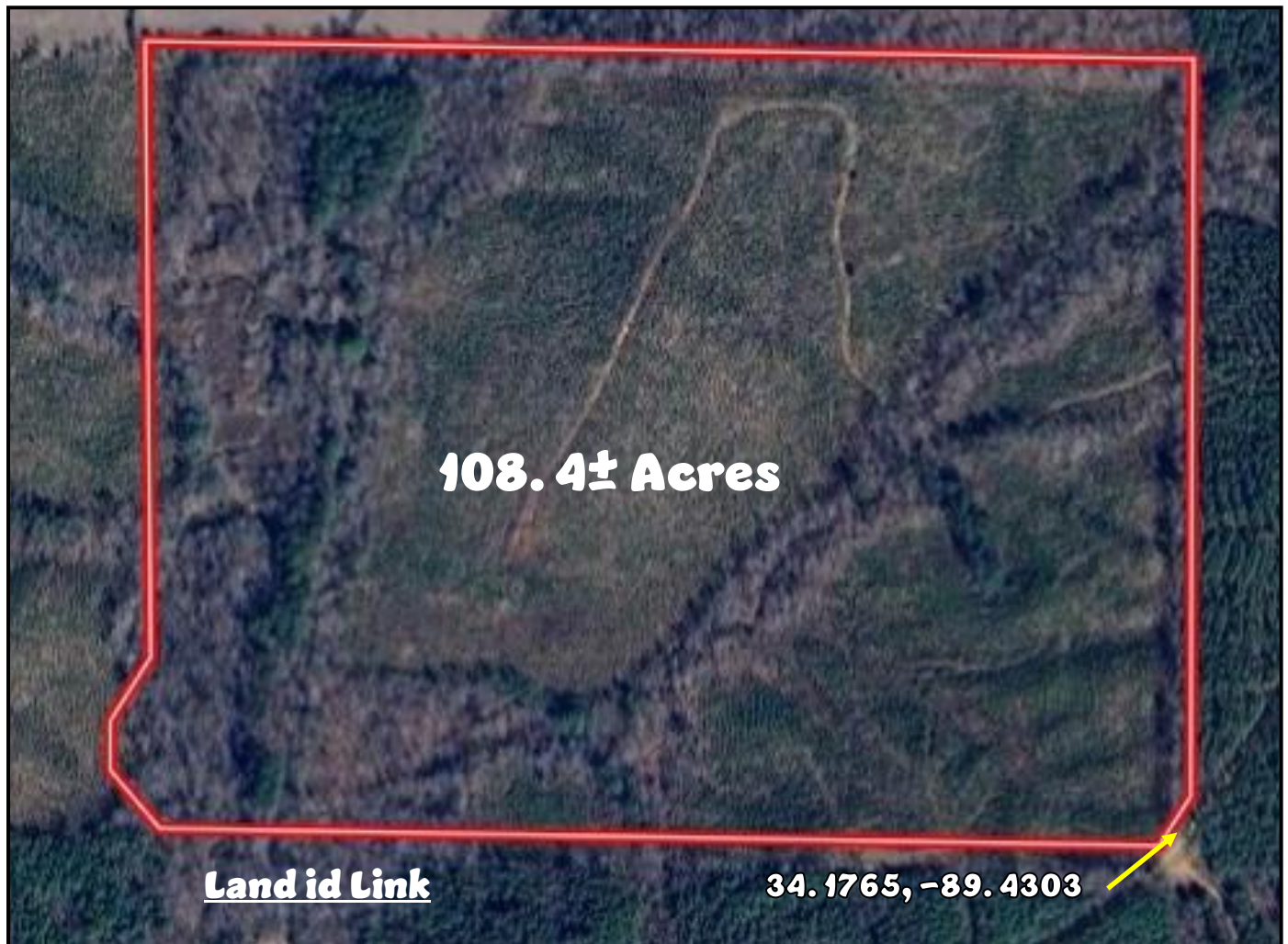
A Real Estate Expert You Can Trust
TomSmithLandandHomes.com

Information is believed to be accurate but not guaranteed.





Aerial Map



KADERO EDLEY
REALTOR®
Office: 601.898.2772
Cell: 601.488.7000
Kadero@TomSmithLand.com



A Real Estate Expert You Can Trust
TomSmithLandandHomes.com

Information is believed to be accurate but not guaranteed.





Ownership Map



KADERO EDLEY

REALTOR®

Office: 601.898.2772

Cell: 601.488.7000

Kadero@TomSmithLand.com



A Real Estate Expert You Can Trust

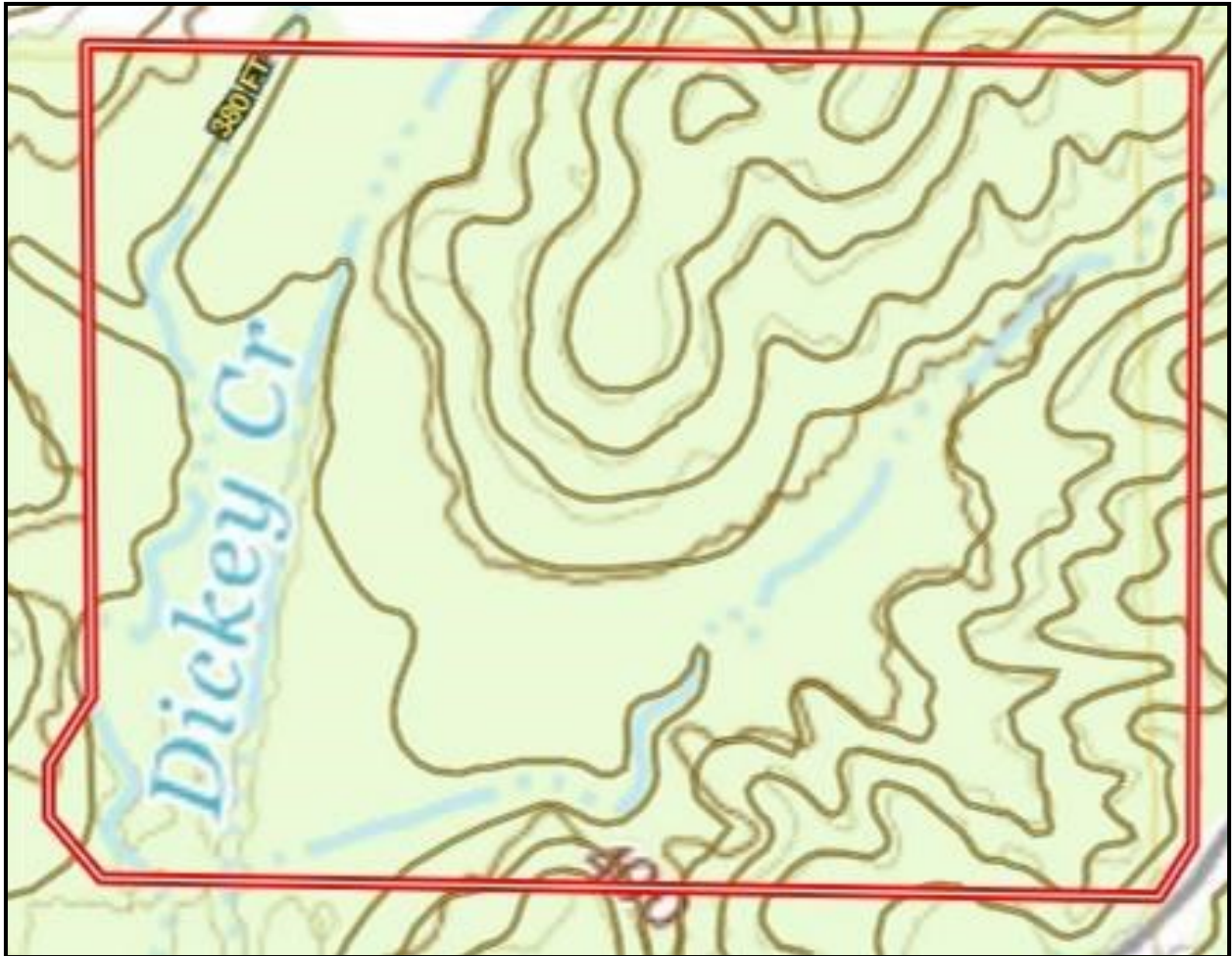
TomSmithLandandHomes.com

Information is believed to be accurate but not guaranteed.





Topographic Map



KADERO EDLEY

REALTOR®

Office: 601.898.2772

Cell: 601.488.7000

Kadero@TomSmithLand.com



A Real Estate Expert You Can Trust

TomSmithLandandHomes.com

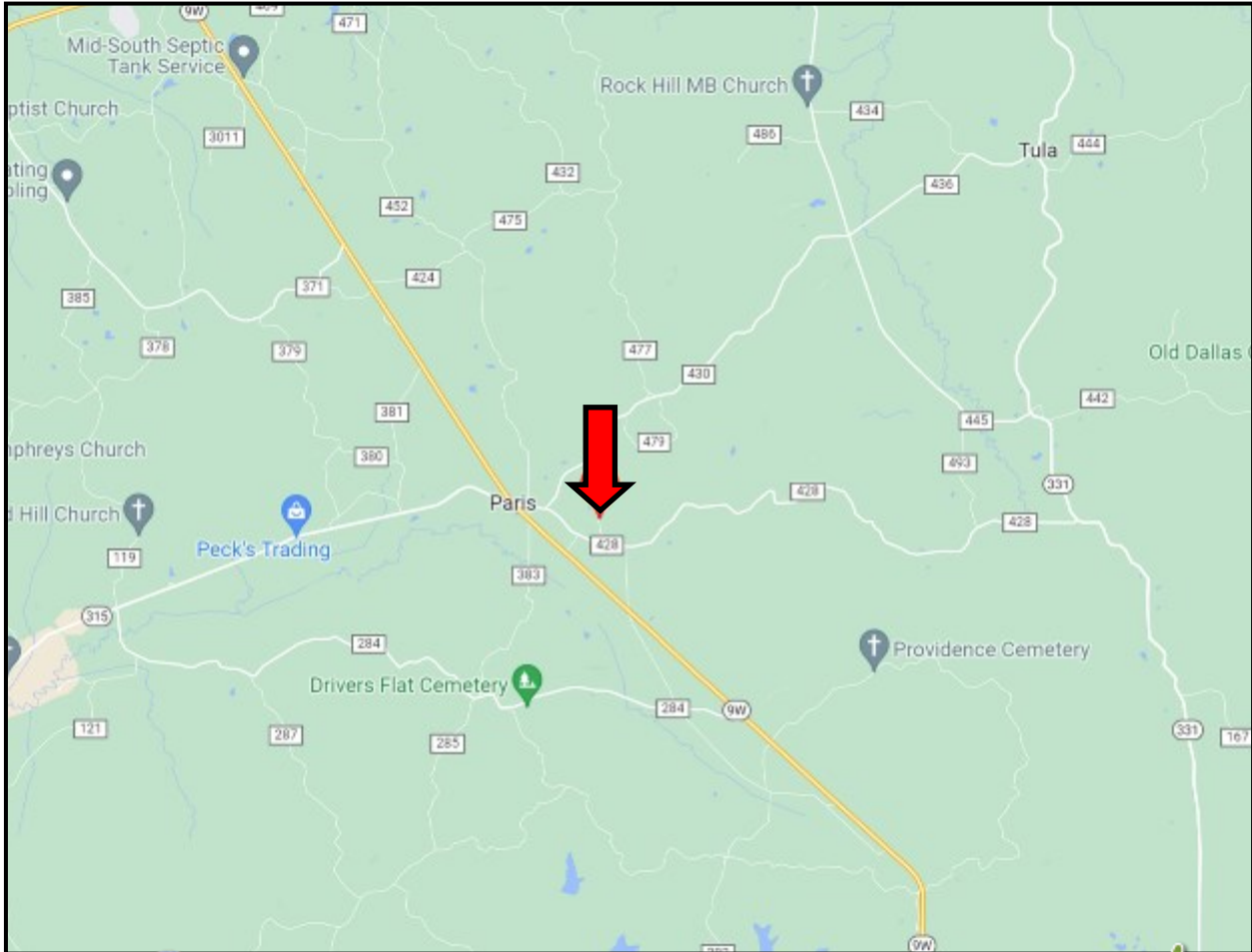
Information is believed to be accurate but not guaranteed.





Directional Map

Directions from MS-7 South in Oxford, MS: Travel South on MS-7 for 3.8 miles. Keep left for MS-9W N for 6.8 miles. Turn left onto CR 430 and travel 0.4 miles then continue onto CR 428 for 0.7 miles. Turn left onto CR 481. After 0.4 miles, the property will be on your right. [GOOGLE MAP LINK](#)



**KADERO
EDLEY**

REALTOR®

Office: 601.898.2772

Cell: 601.488.7000

Kadero@TomSmithLand.com



Expect More. Get More.

A Real Estate Expert You Can Trust

TomSmithLandandHomes.com

Information is believed to be accurate but not guaranteed.

