

Lot 6 in the Gated Community of Chatmoss Cleveland, MS 38732 | Bolivar County



\$65,000

Address: Chatmoss 2nd Lot 6, Cleveland, MS 38732

Are you looking for the perfect place to build your forever home? This 0.5-acre ready-to-build lot in Cleveland, Bolivar County, MS, might be just what you need! Located at the end of a cul-de-sac in the gated Chatmoss community, it offers the ideal balance of privacy and convenience. You'll be close to all amenities and within walking distance of the Cleveland Country Club Golf Course. The house pad dirt work is complete, saving you time and effort during construction, and the lot comes with city water and sewage and build-out covenants—contact the listing agent for details. Ready to start building your dream home? Call Anthony today!

Directions from the intersection of Hwy 61 and Hwy 8 in Cleveland, MS: Travel West on Hwy 8 for 0.4 miles. Turn right onto North Bayou Road and travel 1.2 miles. Turn left onto Rosemary Rd and travel 0.7 miles. Turn right onto Ronaldman Rd, also known as N. Bishop Rd, and travel 0.2 miles. Turn left into the gated entrance. After 0.1 miles, the lot will be on the right. [Google Map Link](#)



**ANTHONY
STEEN**

REALTOR®

Office: 662.441.2500

Cell: 662.645.5151

Anthony@TomSmithLand.com



Expect More. Get More.

A Real Estate Expert You Can Trust

TomSmithLandandHomes.com

Information is believed to be accurate but not guaranteed.





A Real Estate Expert *You Can Trust!*

ANTHONY STEEN
REALTOR®

O: 662.441.2500 C: 662.645.5151

Anthony@TomSmithLand.com

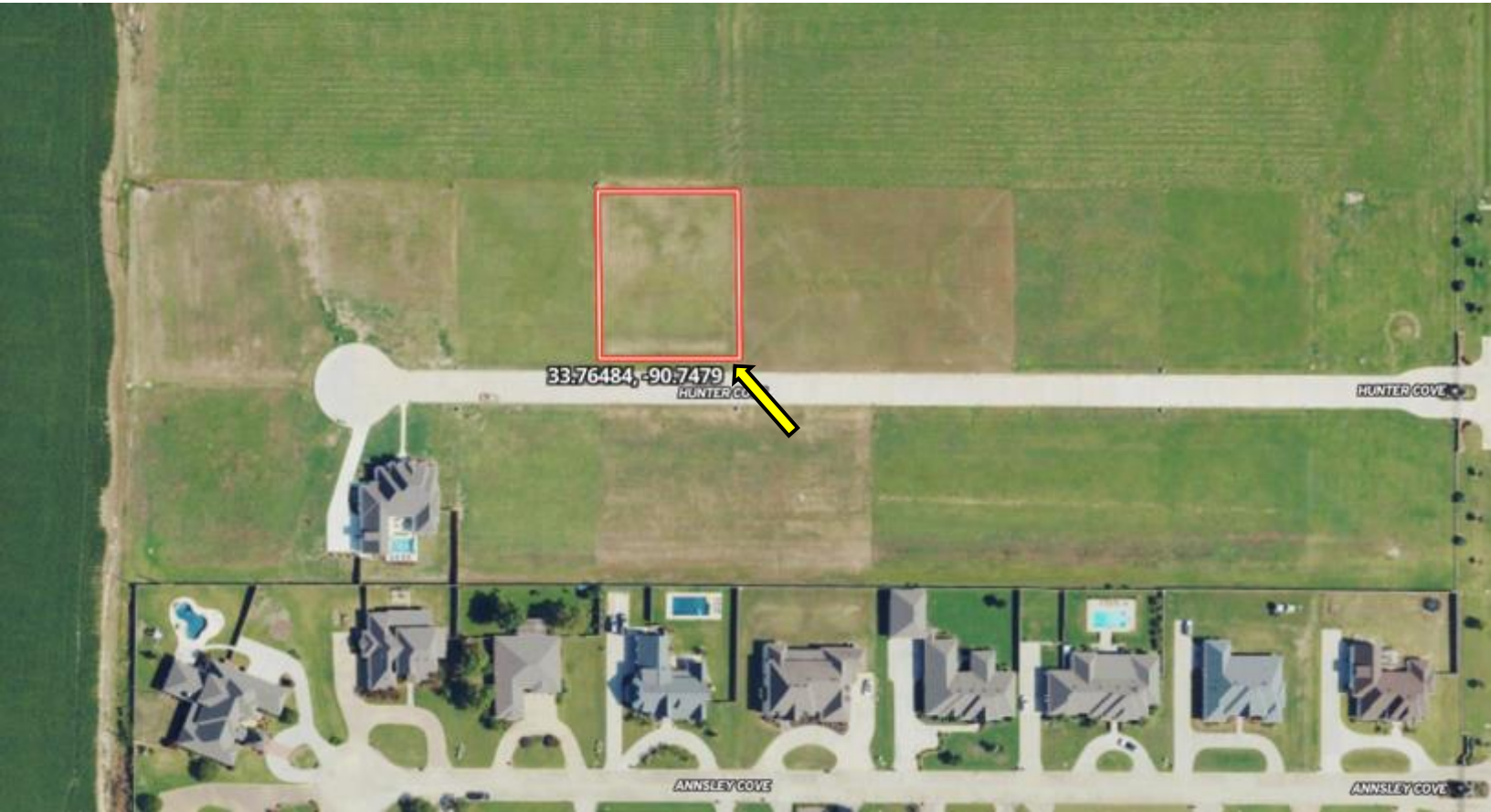
TomSmithLandandHomes.com



Expect More. Get More.



AERIAL MAP



[Click for Interactive Map](#)

A Real Estate Expert
You Can Trust!

ANTHONY STEEN
REALTOR®

O: 662.441.2500 C: 662.645.5151
Anthony@TomSmithLand.com

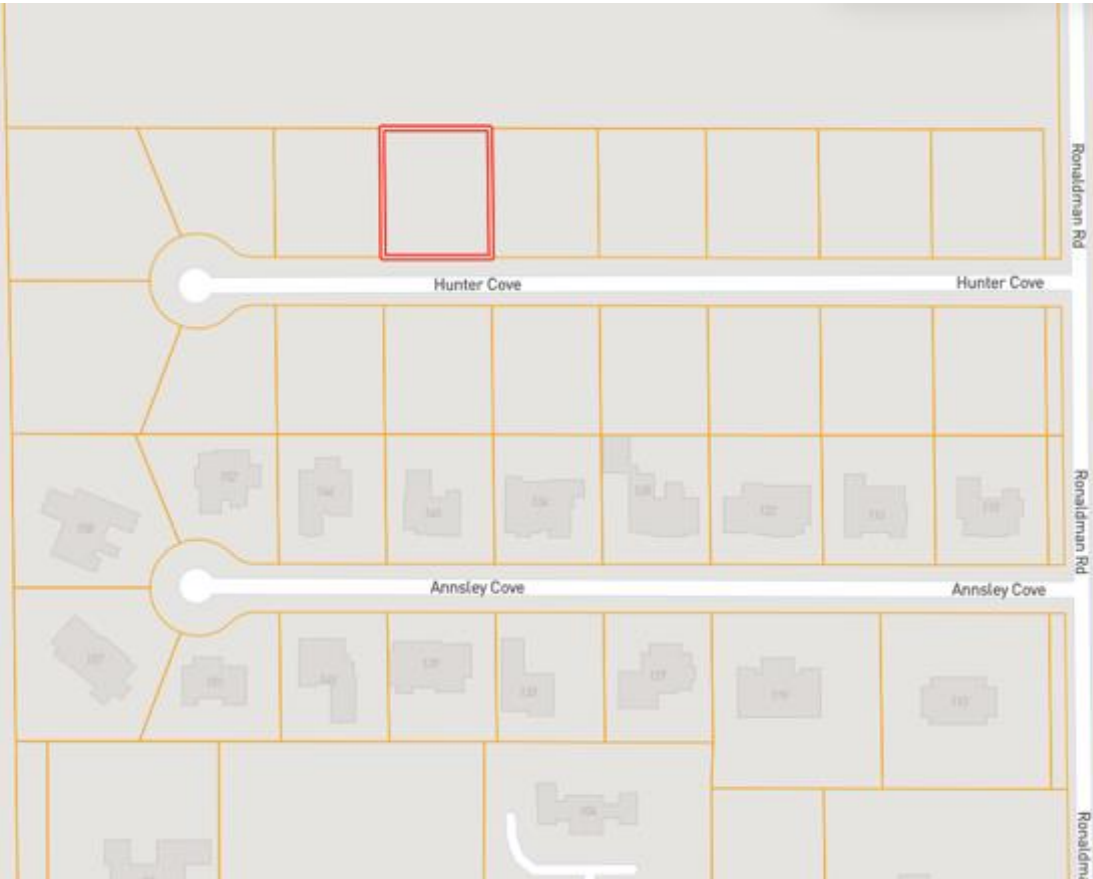
TomSmithLandandHomes.com



Expect More. Get More.



OWNERSHIP MAP



A Real Estate Expert
You Can Trust!

ANTHONY STEEN
REALTOR®

O: 662.441.2500 C: 662.645.5151

Anthony@TomSmithLand.com

TomSmithLandandHomes.com

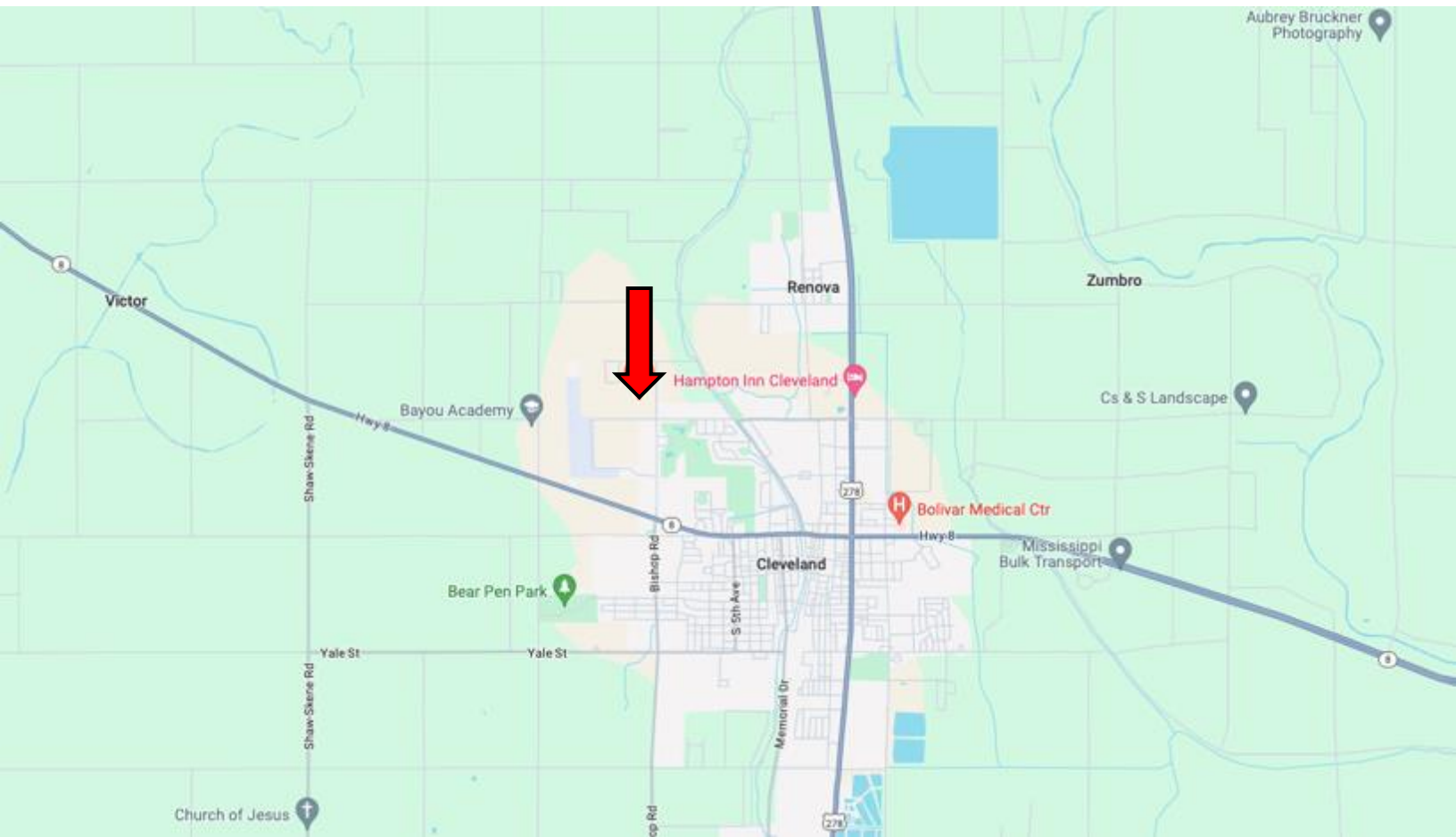


Expect More. Get More.



Information is believed to be accurate but not guaranteed.

DIRECTIONAL MAP



Address: Chatmoss 2nd Lot 6, Cleveland, MS 38732

Directions from the intersection of Hwy 61 and Hwy 8 in Cleveland, MS: Travel West on Hwy 8 for 0.4 miles. Turn right onto North Bayou Road and travel 1.2 miles. Turn left onto Rosemary Rd and travel 0.7 miles. Turn right onto Ronaldman Rd, also known as N. Bishop Rd, and travel 0.2 miles. Turn left into the gated entrance. After 0.1 miles, the lot will be on the right. [Google Map Link](#)



**ANTHONY
STEEN**

REALTOR®

Office: 662.441.2500

Cell: 662.645.5151

Anthony@TomSmithLand.com



Expect More. Get More.

A Real Estate Expert You Can Trust

TomSmithLandandHomes.com

Information is believed to be accurate but not guaranteed.

