

# PRIME HUNTING LAND

76± Acres in Grenada County | \$199,000



Located just 2 miles from Grenada Lake, this 76± acre Grenada County property offers excellent deer and turkey hunting opportunities. The land features a homesite on a hill, surrounded by large pine trees, and it has a recently installed trailer that could serve as a great hunting camp. The north end of the property has 20-plus-year-old pine trees, while the south end, clear-cut 10-12 years ago, has naturally regrown into a thick pine forest, providing perfect bedding areas for deer. The owner has meticulously managed the property and consistently sees 150s class deer yearly. With several food plots and deer stands already in place, this property is easily accessible from the road. Call Anthony Steen today to schedule a tour!



**ANTHONY  
STEEN**

REALTOR®

Office: 601.898.2772

Cell: 662.645.5151

[Anthony@TomSmithLand.com](mailto:Anthony@TomSmithLand.com)



Expect More. Get More.

**A Real Estate Expert You Can Trust**

[TomSmithLandandHomes.com](http://TomSmithLandandHomes.com)

Information is believed to be accurate but not guaranteed.







# A Real Estate Expert *You Can Trust!*

**ANTHONY STEEN**  
REALTOR®  
O: 601.898.2772 C: 662.645.5151  
Anthony@TomSmithLand.com  
TomSmithLandandHomes.com



Expect More. Get More.







# A Real Estate Expert *You Can Trust!*

**ANTHONY STEEN**  
REALTOR®  
O: 601.898.2772 C: 662.645.5151  
Anthony@TomSmithLand.com  
TomSmithLandandHomes.com



Expect More. Get More.







# A Real Estate Expert *You Can Trust!*

**ANTHONY STEEN**  
REALTOR®  
O: 601.898.2772 C: 662.645.5151  
Anthony@TomSmithLand.com  
TomSmithLandandHomes.com



Expect More. Get More.







# A Real Estate Expert *You Can Trust!*

**ANTHONY STEEN**  
REALTOR®  
O: 601.898.2772 C: 662.645.5151  
Anthony@TomSmithLand.com  
TomSmithLandandHomes.com



Expect More. Get More.







# A Real Estate Expert *You Can Trust!*

**ANTHONY STEEN**  
REALTOR®  
O: 601.898.2772 C: 662.645.5151  
Anthony@TomSmithLand.com  
TomSmithLandandHomes.com

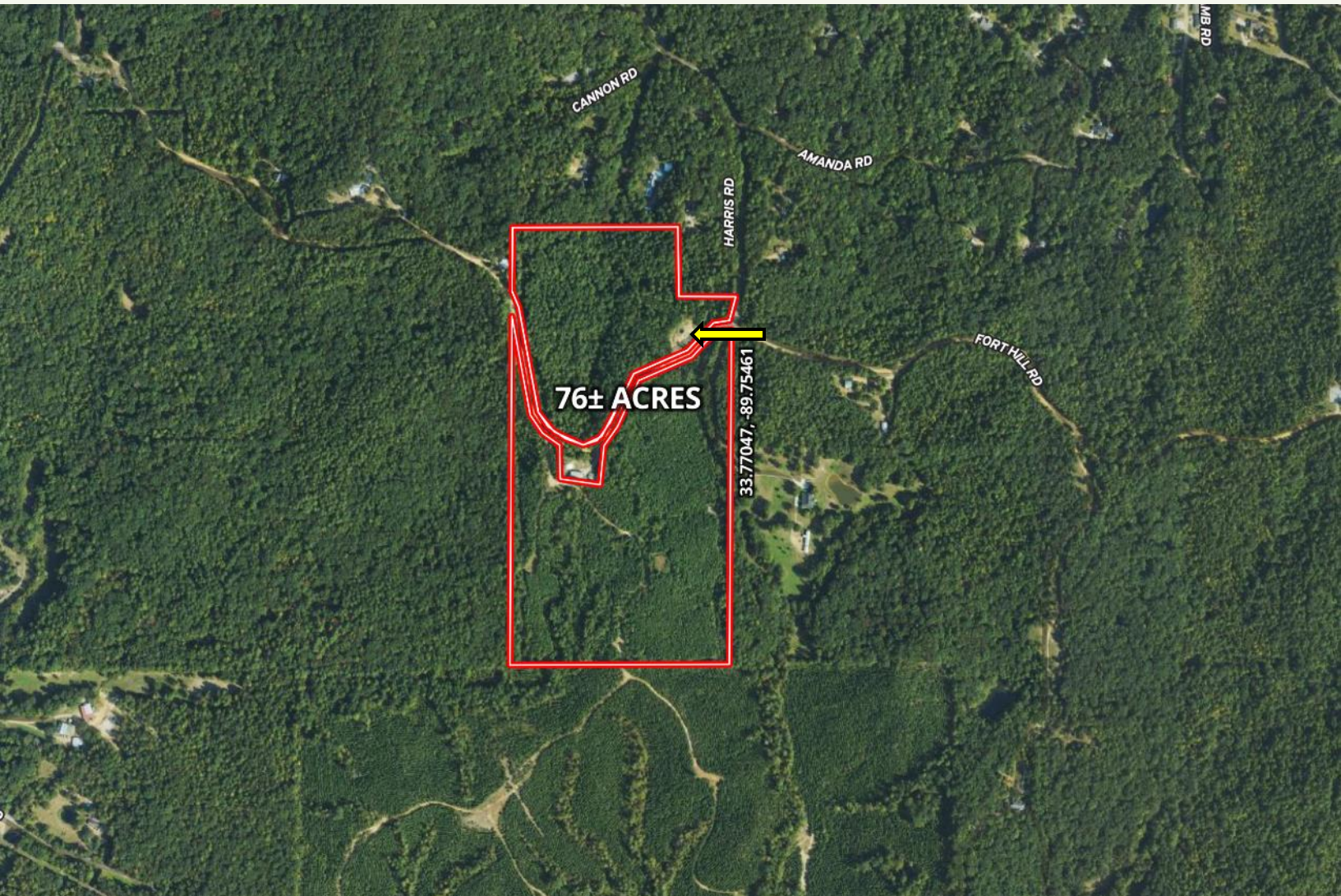


Expect More. Get More.





# AERIAL MAP



[Click for the Interactive Map](#)

**A Real Estate Expert**  
*You Can Trust!*

**ANTHONY STEEN**  
REALTOR®  
O: 601.898.2772 C: 662.645.5151  
Anthony@TomSmithLand.com  
TomSmithLandandHomes.com



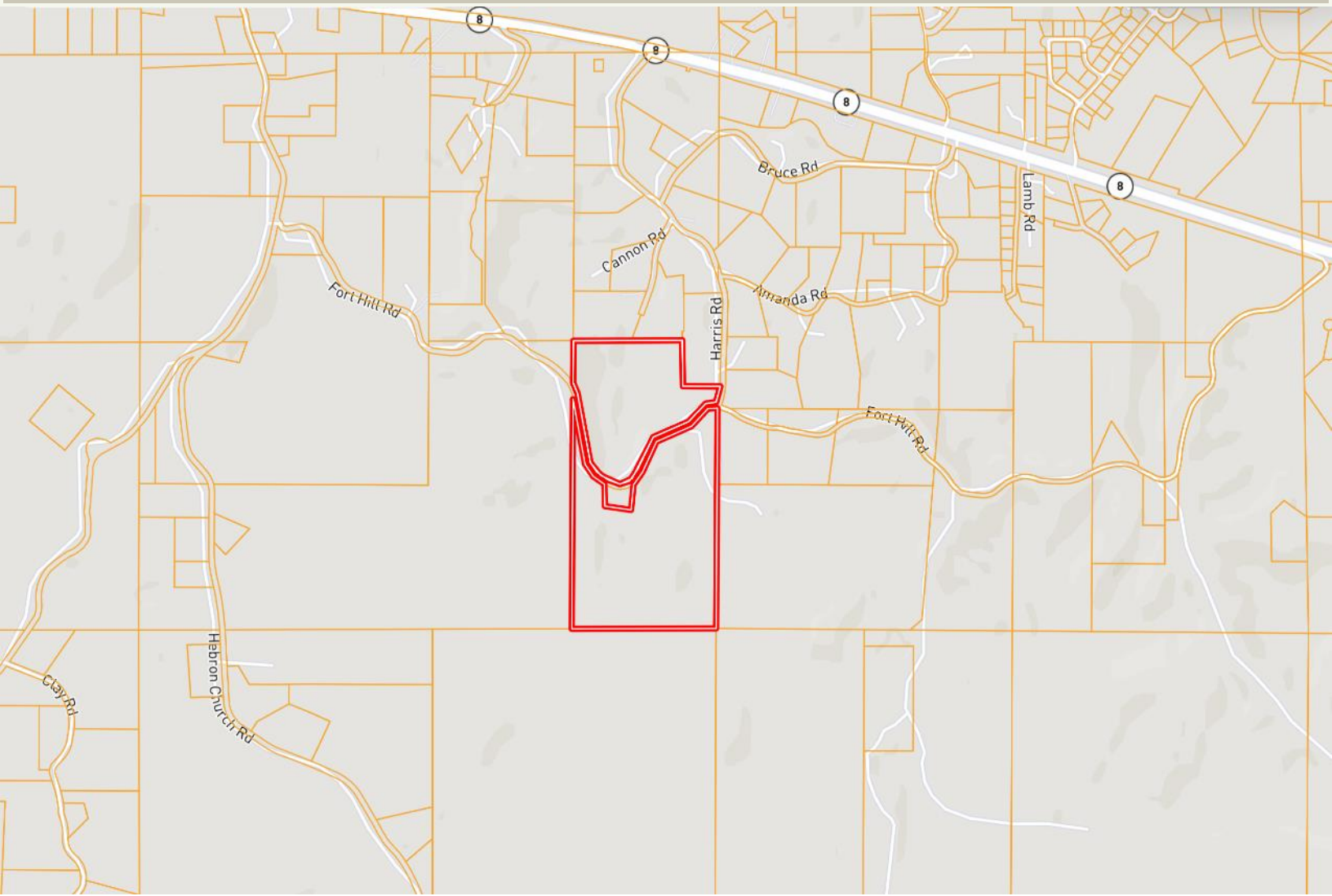
Expect More. Get More.

Information is believed to be accurate but not guaranteed.





# OWNERSHIP MAP



**A Real Estate Expert**  
*You Can Trust!*

**ANTHONY STEEN**  
REALTOR®  
O: 601.898.2772 C: 662.645.5151  
Anthony@TomSmithLand.com  
TomSmithLandandHomes.com



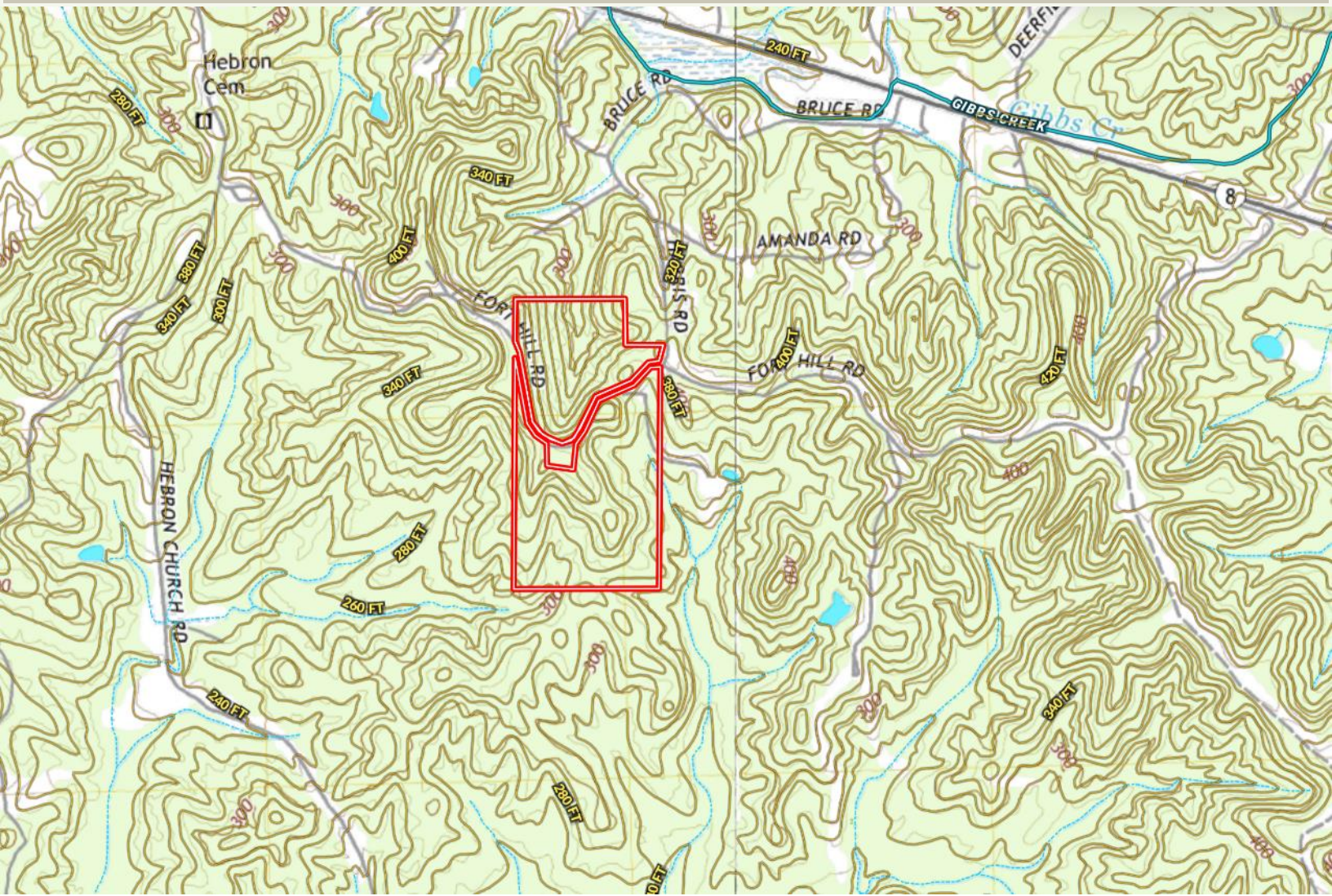
Expect More. Get More.

Information is believed to be accurate but not guaranteed.





# TOPOGRAPHY MAP



**A Real Estate Expert**  
*You Can Trust!*

**ANTHONY STEEN**  
REALTOR®

O: 601.898.2772 C: 662.645.5151

Anthony@TomSmithLand.com

TomSmithLandandHomes.com



Expect More. Get More.

Information is believed to be accurate but not guaranteed.

LandReport  
2011-2024  
BEST  
BROKERAGES



# SOIL MAP



SOIL CODE	SOIL DESCRIPTION	ACRES	%	CPI	NCCPI	CAP
CrF	Cuthbert-Ruston association, hilly (sweatman, smithdale)	45.39	62.91	0	17	7e
RcF	Ruston-Cuthbert association, hilly (smithdale, sweatman)	22.61	31.34	0	17	7e
Gt	Gullied land, sandy	4.16	5.77	0	-	7e

**A Real Estate Expert**  
*You Can Trust!*

**ANTHONY STEEN**

REALTOR®

O: 601.898.2772 C: 662.645.5151

Anthony@TomSmithLand.com

TomSmithLandandHomes.com

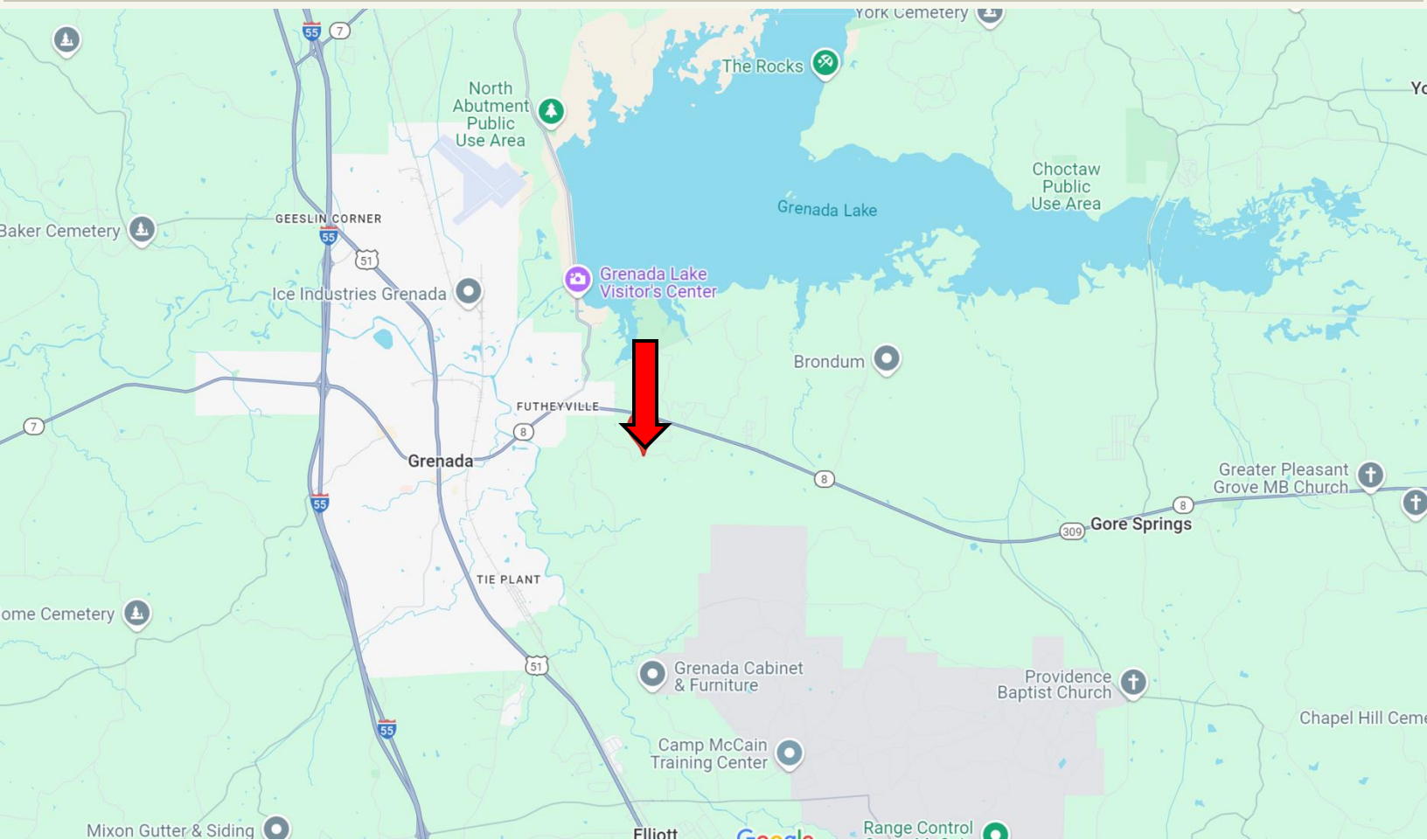


Expect More. Get More.





# DIRECTIONAL MAP



**Address:** 1832 Fort Hill Rd, Grenada, MS 38901

**Directions from I-55 in Grenada, MS:** Take exit 206 for MS-8 toward MS-7 S/Grenada/Greenwood. Merge onto MS-8 and travel 5.6 miles. Turn right onto Harris Rd. and travel 0.7 miles. Turn right onto Fort Hill Rd. After 213 feet, the property will be on both sides of the road. [Google Map Link](#)



**ANTHONY  
STEEN**

REALTOR®

Office: 601.898.2772

Cell: 662.645.5151

Anthony@TomSmithLand.com



Expect More. Get More.

**A Real Estate Expert You Can Trust**

TomSmithLandandHomes.com

Information is believed to be accurate but not guaranteed.

