

PRIME HUNTING LAND

76± Acres in Grenada County | \$199,000



Located just 2 miles from Grenada Lake, this 76± acre Grenada County property offers excellent deer and turkey hunting opportunities. The land features a homesite on a hill, surrounded by large pine trees, and it has a recently installed trailer that could serve as a great hunting camp. The north end of the property has 20-plus-year-old pine trees, while the south end, clear-cut 10-12 years ago, has naturally regrown into a thick pine forest, providing perfect bedding areas for deer. The owner has meticulously managed the property and consistently sees 150s class deer yearly. With several food plots and deer stands already in place, this property is easily accessible from the road. Call Anthony Steen today to schedule a tour!



**ANTHONY
STEEN**

REALTOR®

Office: 662.441.2500

Cell: 662.645.5151

Anthony@TomSmithLand.com



Expect More. Get More.

A Real Estate Expert You Can Trust

TomSmithLandandHomes.com

Information is believed to be accurate but not guaranteed.





A Real Estate Expert *You Can Trust!*

ANTHONY STEEN
REALTOR®

O: 662.441.2500 C: 662.645.5151

Anthony@TomSmithLand.com

TomSmithLandandHomes.com



Expect More. Get More.





A Real Estate Expert
You Can Trust!

ANTHONY STEEN
 REALTOR®

O: 662.441.2500 C: 662.645.5151

Anthony@TomSmithLand.com

TomSmithLandandHomes.com



Expect More. Get More.



Information is believed to be accurate but not guaranteed.



A Real Estate Expert *You Can Trust!*

ANTHONY STEEN
REALTOR®

O: 662.441.2500 C: 662.645.5151

Anthony@TomSmithLand.com

TomSmithLandandHomes.com



Expect More. Get More.



Information is believed to be accurate but not guaranteed.



A Real Estate Expert *You Can Trust!*

ANTHONY STEEN
REALTOR®

O: 662.441.2500 C: 662.645.5151

Anthony@TomSmithLand.com

TomSmithLandandHomes.com



Expect More. Get More.



Information is believed to be accurate but not guaranteed.



A Real Estate Expert *You Can Trust!*

ANTHONY STEEN
REALTOR®

O: 662.441.2500 C: 662.645.5151

Anthony@TomSmithLand.com

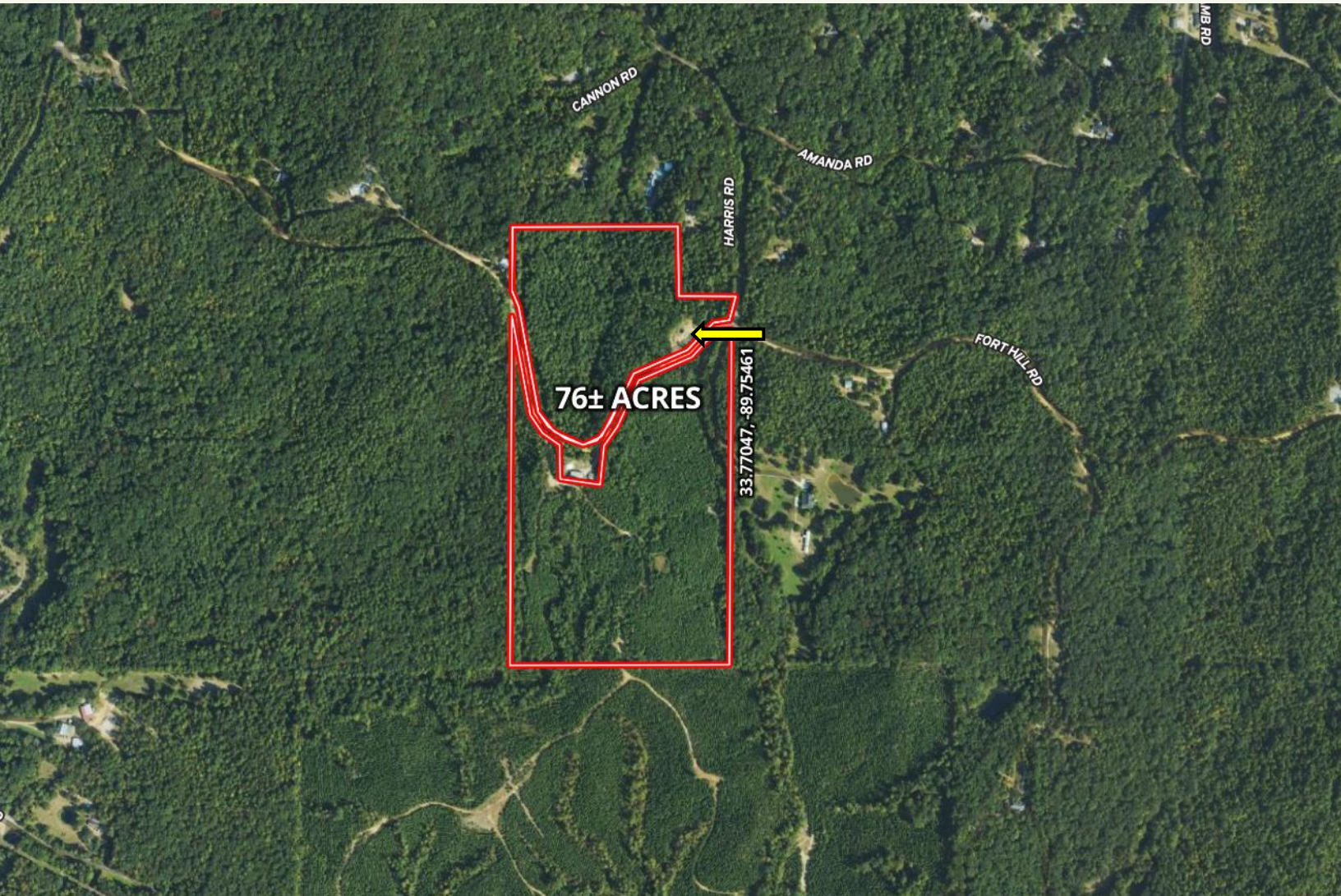
TomSmithLandandHomes.com



Expect More. Get More.



AERIAL MAP



[Click for the Interactive Map](#)

A Real Estate Expert
You Can Trust!

ANTHONY STEEN
REALTOR®

O: 662.441.2500 C: 662.645.5151
Anthony@TomSmithLand.com

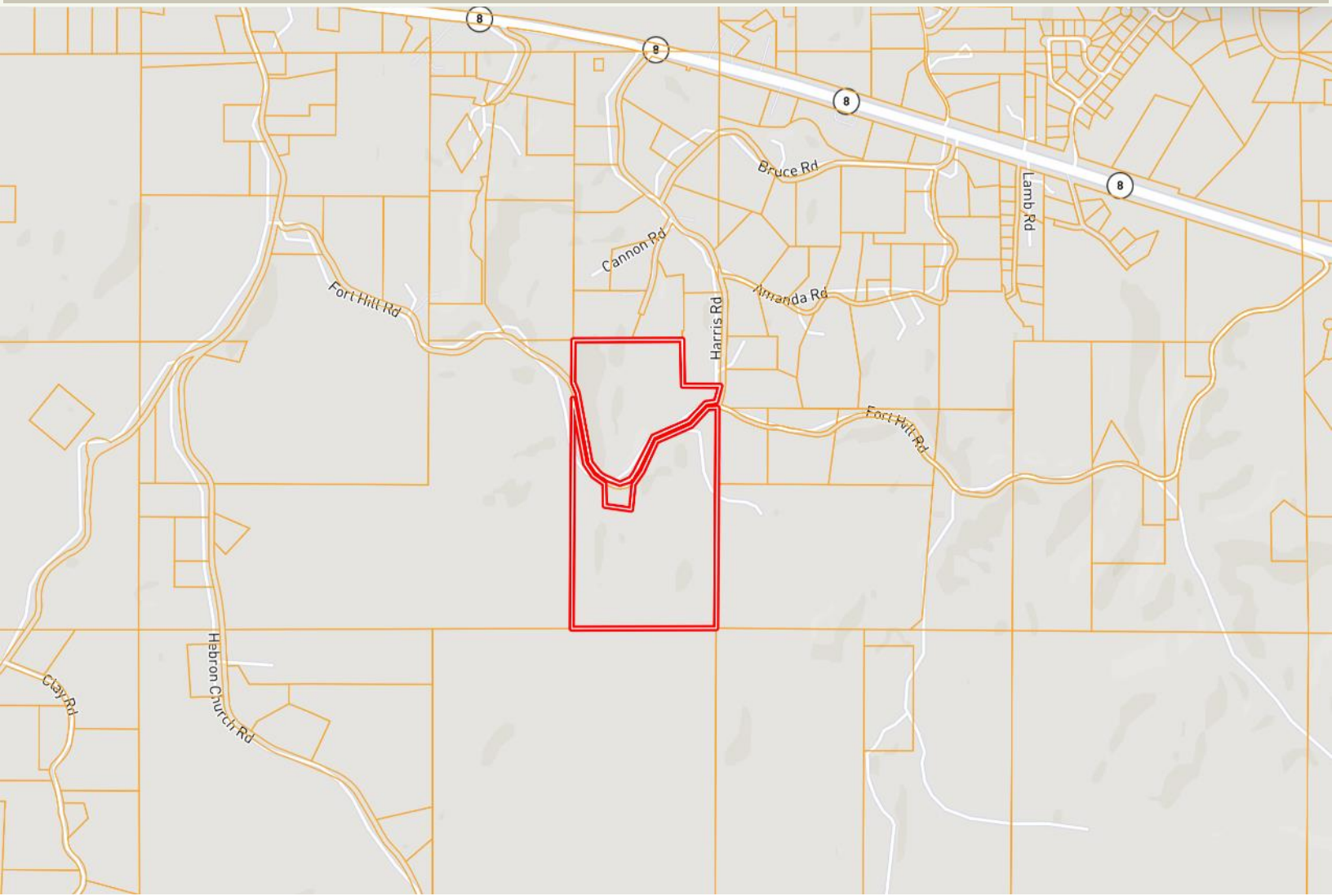
TomSmithLandandHomes.com



Expect More. Get More.



OWNERSHIP MAP



A Real Estate Expert
You Can Trust!

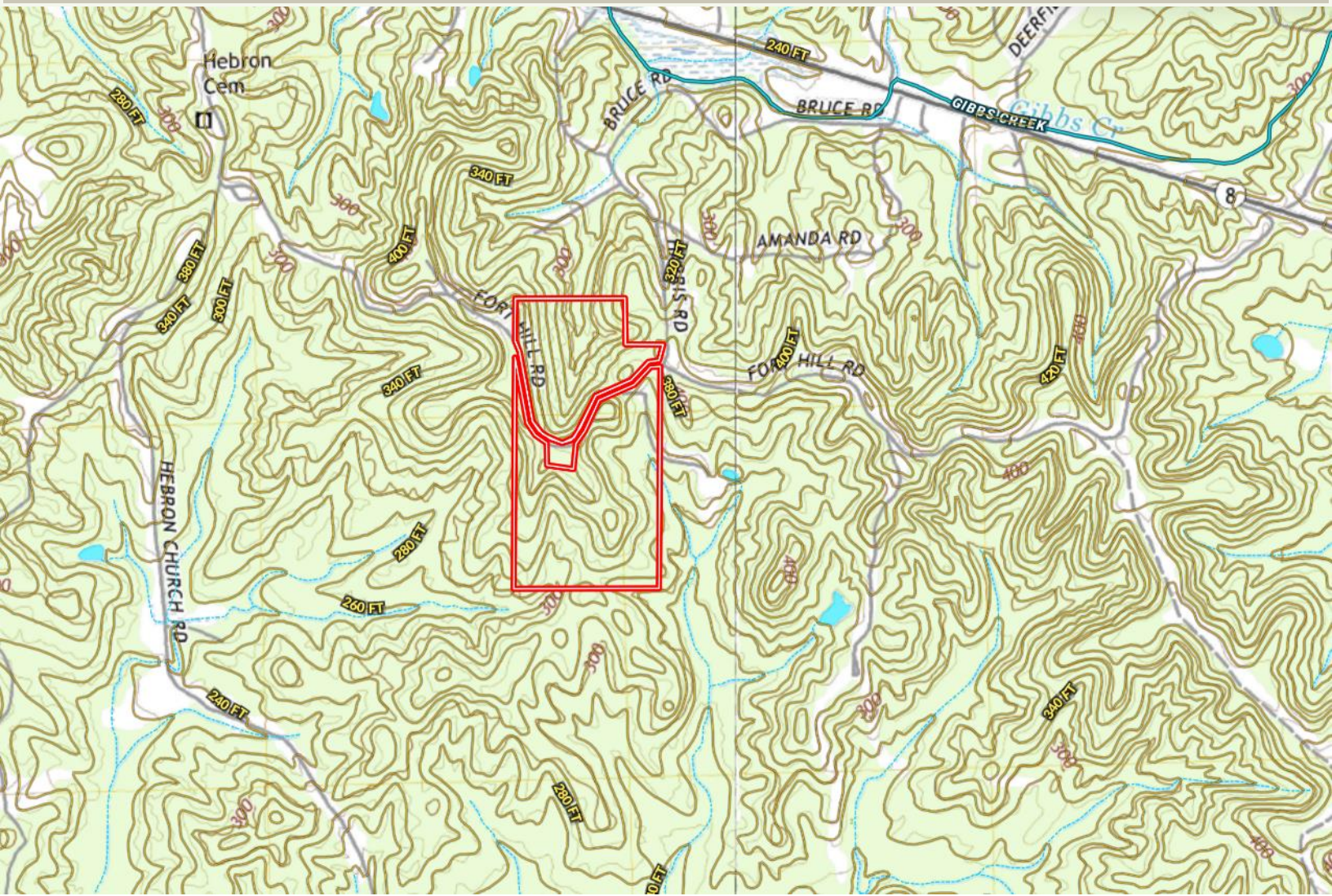
ANTHONY STEEN
REALTOR®
O: 662.441.2500 C: 662.645.5151
Anthony@TomSmithLand.com
TomSmithLandandHomes.com



Expect More. Get More.



TOPOGRAPHY MAP



A Real Estate Expert
You Can Trust!

ANTHONY STEEN
REALTOR®

O: 662.441.2500 C: 662.645.5151

Anthony@TomSmithLand.com

TomSmithLandandHomes.com



Expect More. Get More.



Information is believed to be accurate but not guaranteed.

SOIL MAP



SOIL CODE	SOIL DESCRIPTION	ACRES	%	CPI	NCCPI	CAP
CrF	Cuthbert-Ruston association, hilly (sweatman, smithdale)	45.39	62.91	0	17	7e
RcF	Ruston-Cuthbert association, hilly (smithdale, sweatman)	22.61	31.34	0	17	7e
Gt	Gullied land, sandy	4.16	5.77	0	-	7e

A Real Estate Expert
You Can Trust!

ANTHONY STEEN
REALTOR®

O: 662.441.2500 C: 662.645.5151

Anthony@TomSmithLand.com

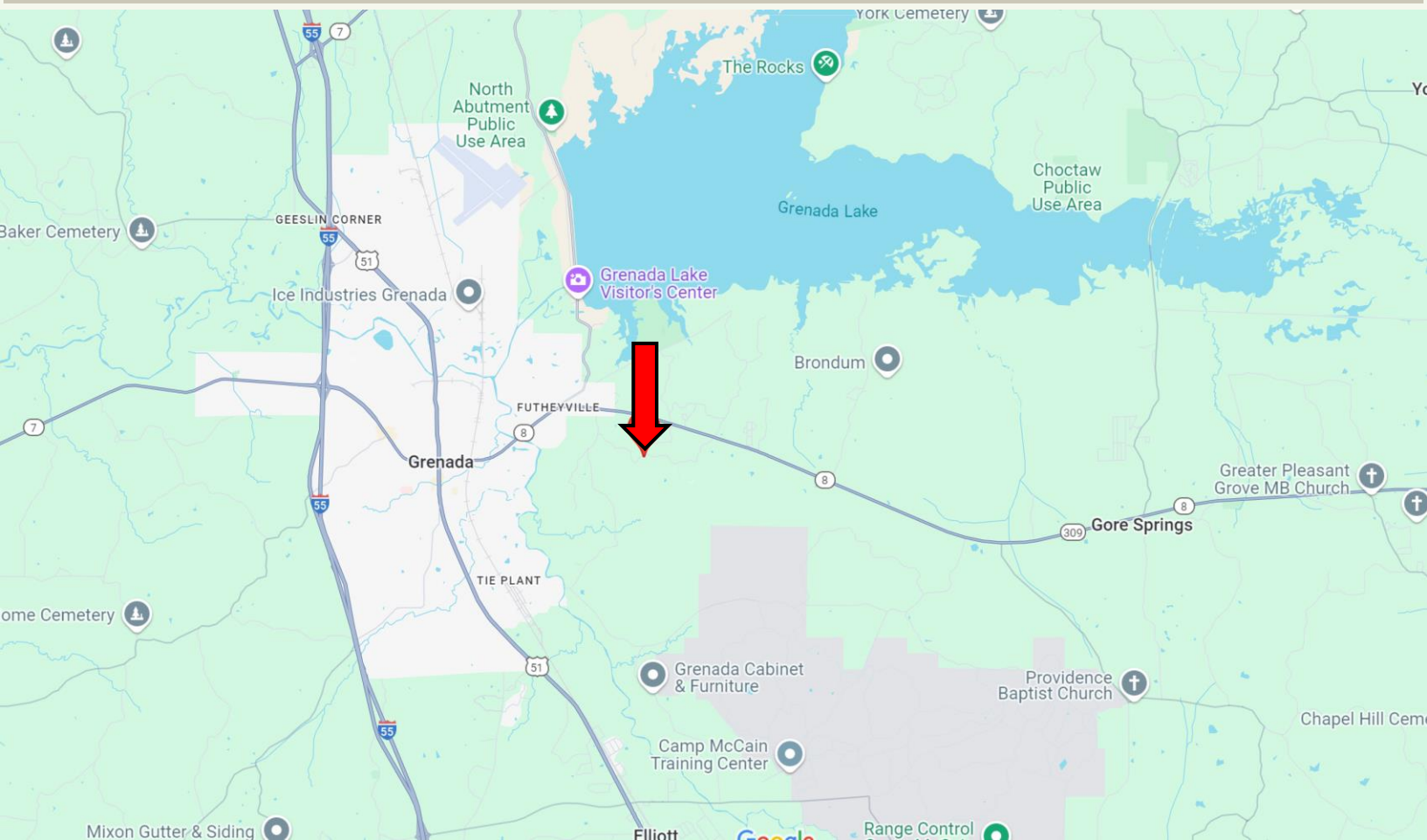
TomSmithLandandHomes.com



Expect More. Get More.



DIRECTIONAL MAP



Address: 1832 Fort Hill Rd, Grenada, MS 38901

Directions from I-55 in Grenada, MS: Take exit 206 for MS-8 toward MS-7 S/Grenada/Greenwood. Merge onto MS-8 and travel 5.6 miles.

Turn right onto Harris Rd. and travel 0.7 miles. Turn right onto Fort Hill Rd. After 213 feet, the property will be on both sides of the road. [Google Map Link](#)



**ANTHONY
STEEN**

REALTOR®

Office: 662.441.2500

Cell: 662.645.5151

Anthony@TomSmithLand.com



Expect More. Get More.

A Real Estate Expert You Can Trust

TomSmithLandandHomes.com

Information is believed to be accurate but not guaranteed.

