

RECREATIONAL PROPERTY
OR HOMESITE

16± ACRES IN
LINCOLN COUNTY, MS



\$175,000

000 Hwy 550, Brookhaven, MS 39601

This 16± acre property in Lincoln County, MS, offers an ideal mix of features for both a homesite and recreational use. Conveniently located near the amenities of Brookhaven, it features road frontage on Highway 550, ensuring easy access. The tract includes a 3-acre pond, perfect for fishing and providing a serene water feature, pastureland, and mature pine trees, adding both beauty and versatility to the land. Whether you're planning to build a home, engage in outdoor activities, or invest in a growing area of Brookhaven, this property offers many opportunities. Call Clif to schedule your showing today!

Directions from I-55 in Brookhaven, MS: Take exit 40 and travel east on Brookway Blvd for .7 miles. Turn left onto Brookhaven St. and travel for .6 miles. Turn left onto MS-550 W and travel for .5 miles. The property will be on the right. [GOOGLE MAP LINK](#)



CLIF
CANNON

MANAGING BROKER

Office: 601.990.5070

Cell: 601.565.1070

Clif@TomSmithLand.com



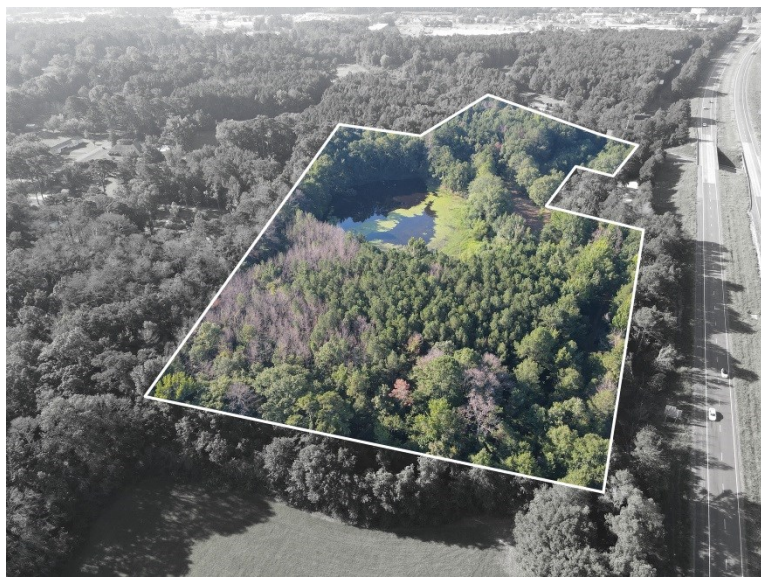
Expect More. Get More.

A Real Estate Expert You Can Trust

TomSmithLandandHomes.com

Information is believed to be accurate but not guaranteed.





A Real Estate Expert You Can Trust!

CLIF CANNON

MANAGING BROKER

O: 601.990.5070 C: 601.565.1070

Clif@TomSmithLand.com

TomSmithLandandHomes.com

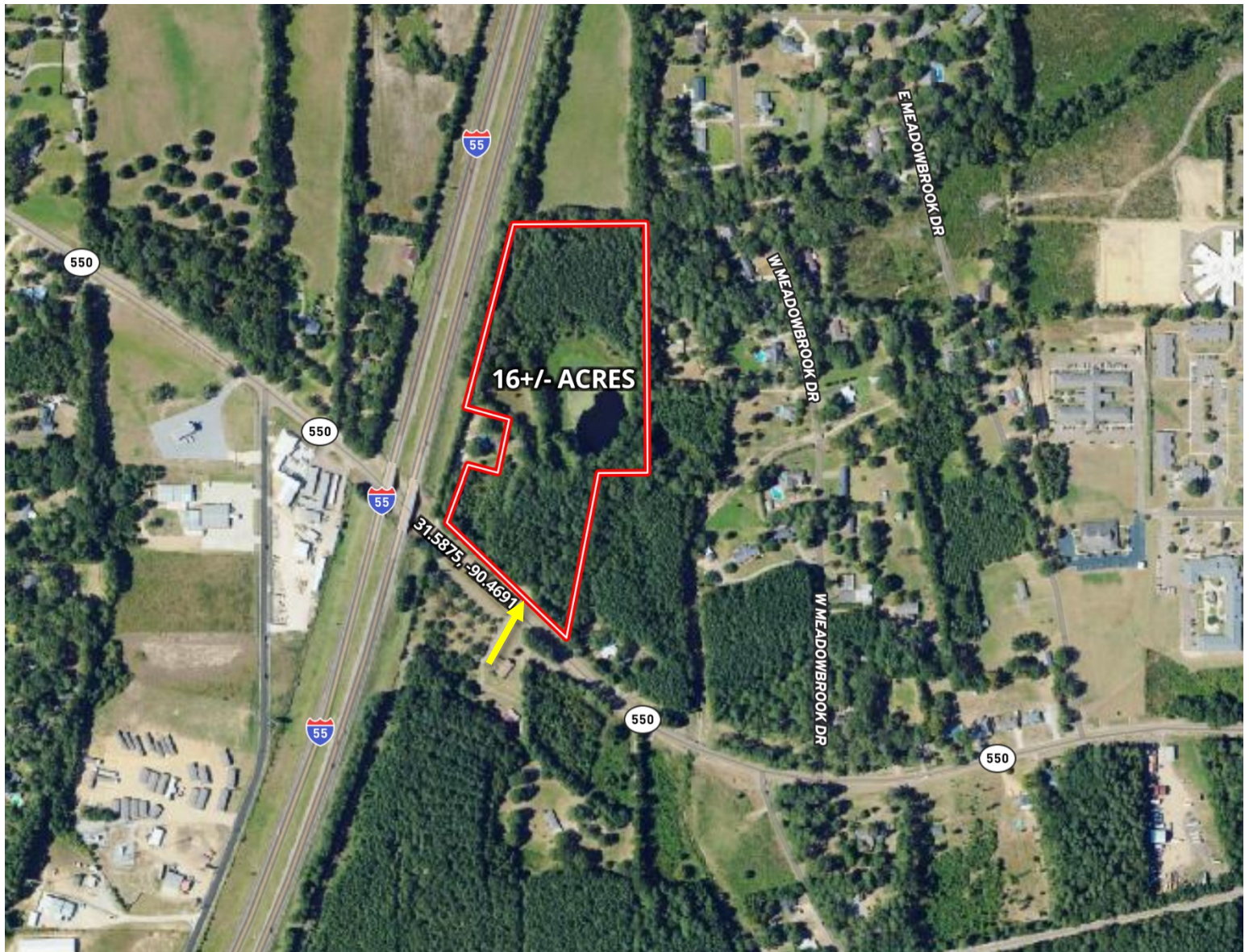


Expect More. Get More.



Information is believed to be accurate but not guaranteed.

AERIAL MAP



[Click Here for the LandId Interactive Map Link](#)

A Real Estate Expert
You Can Trust!

CLIF CANNON

MANAGING BROKER

O: 601.990.5070 C: 601.565.1070

Clif@TomSmithLand.com

TomSmithLandandHomes.com

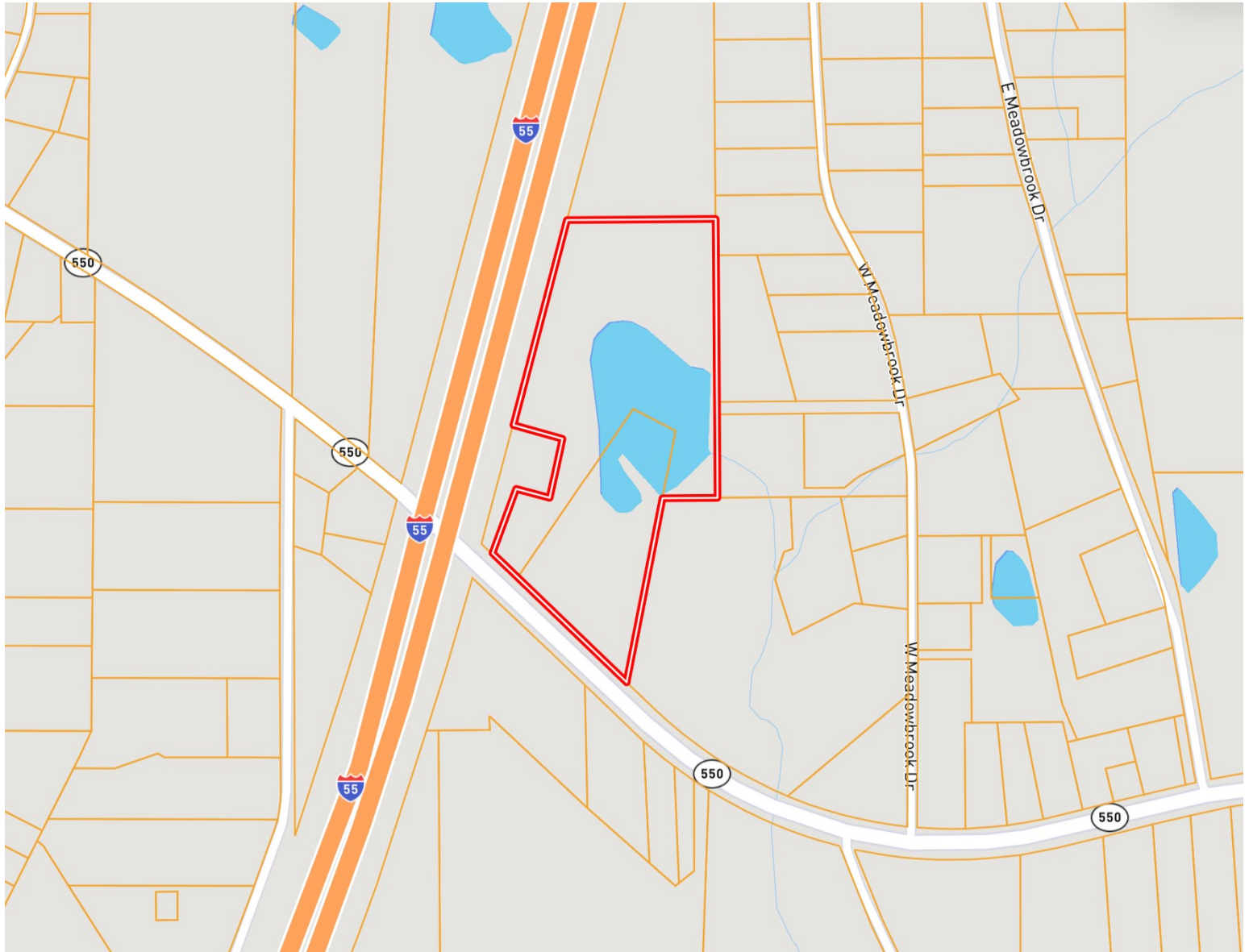


Expect More. Get More.



Information is believed to be accurate but not guaranteed.

OWNERSHIP MAP



A Real Estate Expert
You Can Trust!

CLIF CANNON

MANAGING BROKER

O: 601.990.5070 C: 601.565.1070

Clif@TomSmithLand.com

TomSmithLandandHomes.com

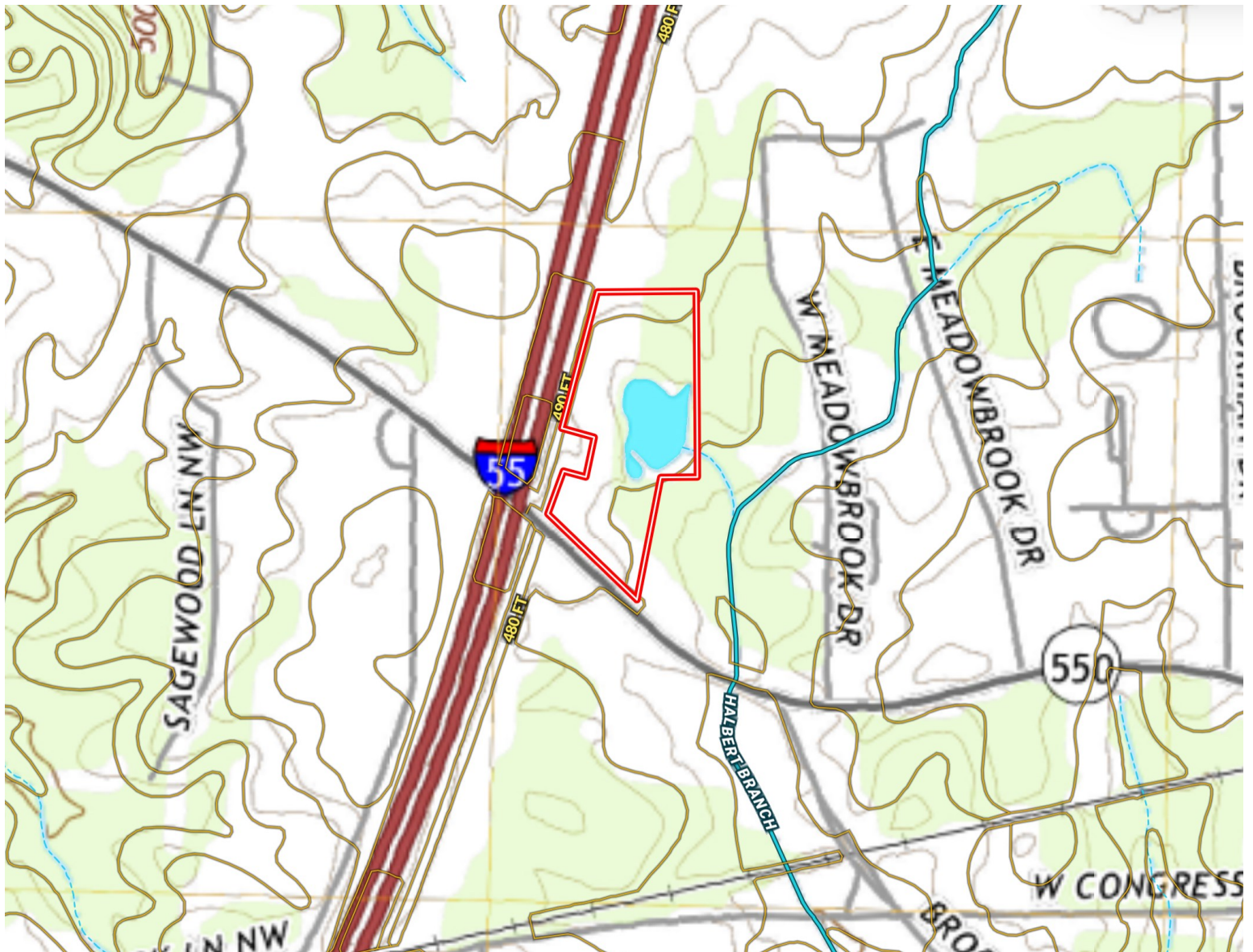


Expect More. Get More.

Information is believed to be accurate but not guaranteed.



TOPOGRAPHY MAP



A Real Estate Expert
You Can Trust!

CLIF CANNON

MANAGING BROKER

O: 601.990.5070 C: 601.565.1070

Clif@TomSmithLand.com

TomSmithLandandHomes.com

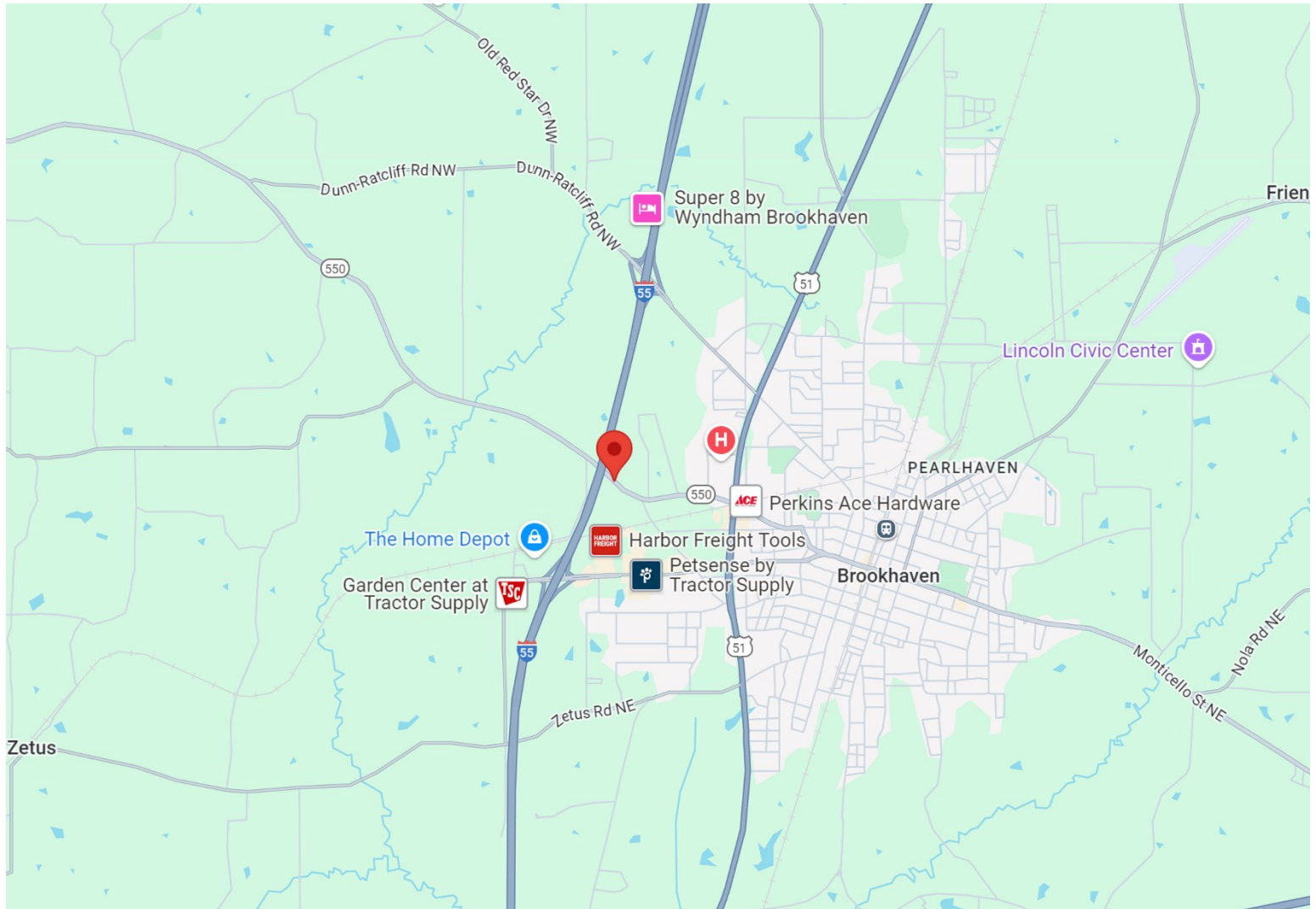


Expect More. Get More.

Information is believed to be accurate but not guaranteed.



DIRECTIONAL MAP



Directions from I-55 in Brookhaven, MS: Take exit 40 and travel east on Brookway Blvd for .7 miles. Turn left onto Brookhaven St. and travel for .6 miles. Turn left onto MS-550 W and travel for .5 miles. The property will be on the right. [GOOGLE MAP LINK](#)



**CLIF
CANNON**

MANAGING BROKER

Office: 601.990.5070

Cell: 601.565.1070

Clif@TomSmithLand.com



Expect More. Get More.

A Real Estate Expert You Can Trust

TomSmithLandandHomes.com

Information is believed to be accurate but not guaranteed.

