

Commercial Property Winston County, MS



\$268,000

This Winston County commercial building is located off North Columbus Avenue in Louisville, MS, on a .24± acre lot with approximately 75 feet of road frontage. It is just off Main Street and features several offices, a welcome desk, several bathrooms, and a break room. There is also a private parking lot located behind the building. This building is approximately 4,500 square feet and is ready for its new owners. To schedule a private showing, call or text Walker Trantum today!



**WALKER
TRANUM**
REALTOR®

Office: 662.268.6333

Cell: 662.769.1442

Walker@TomSmithHomes.com



Expect More. Get More.

A Real Estate Expert You Can Trust

TomSmithLandandHomes.com

Information is believed to be accurate but not guaranteed.





WALKER TRANUM

REALTOR®

Office: 662.268.6333

Cell: 662.769.1442

Walker@TomSmithHomes.com



Expect More. Get More.

A Real Estate Expert You Can Trust

TomSmithLandandHomes.com

Information is believed to be accurate but not guaranteed.





**WALKER
TRANUM**
REALTOR®

Office: 662.268.6333

Cell: 662.769.1442

Walker@TomSmithHomes.com



Expect More. Get More.

A Real Estate Expert You Can Trust

TomSmithLandandHomes.com

Information is believed to be accurate but not guaranteed.



Aerial Map

[Interactive Link](#)



33.12482, -
89.05345



**WALKER
TRANUM**
REALTOR®

Office: 662.268.6333
Cell: 662.769.1442
Walker@TomSmithHomes.com



Expect More. Get More.

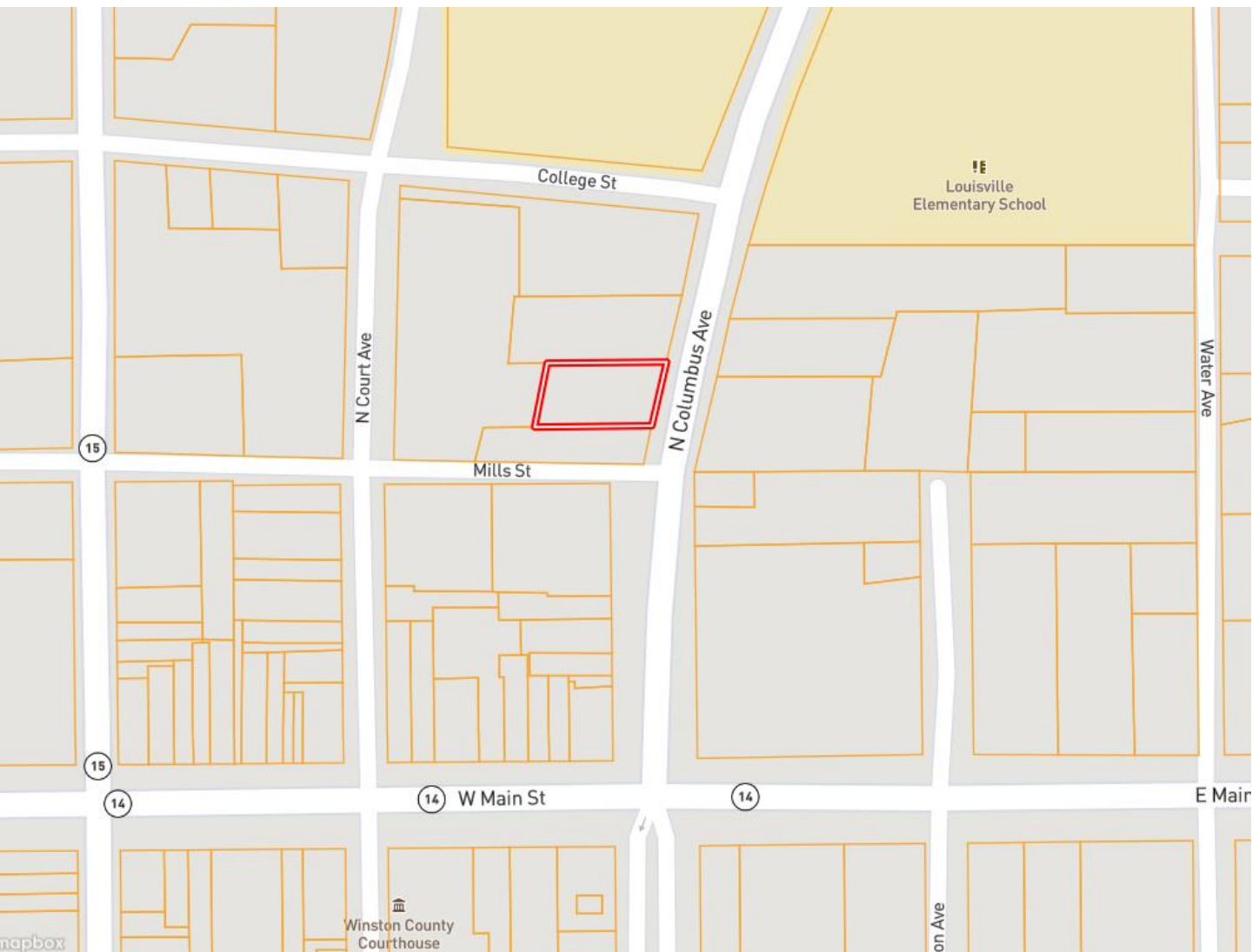
A Real Estate Expert You Can Trust

TomSmithLandandHomes.com

Information is believed to be accurate but not guaranteed.



Ownership Map



**WALKER
TRANUM**
REALTOR®

Office: 662.268.6333

Cell: 662.769.1442

Walker@TomSmithHomes.com



Expect More. Get More.

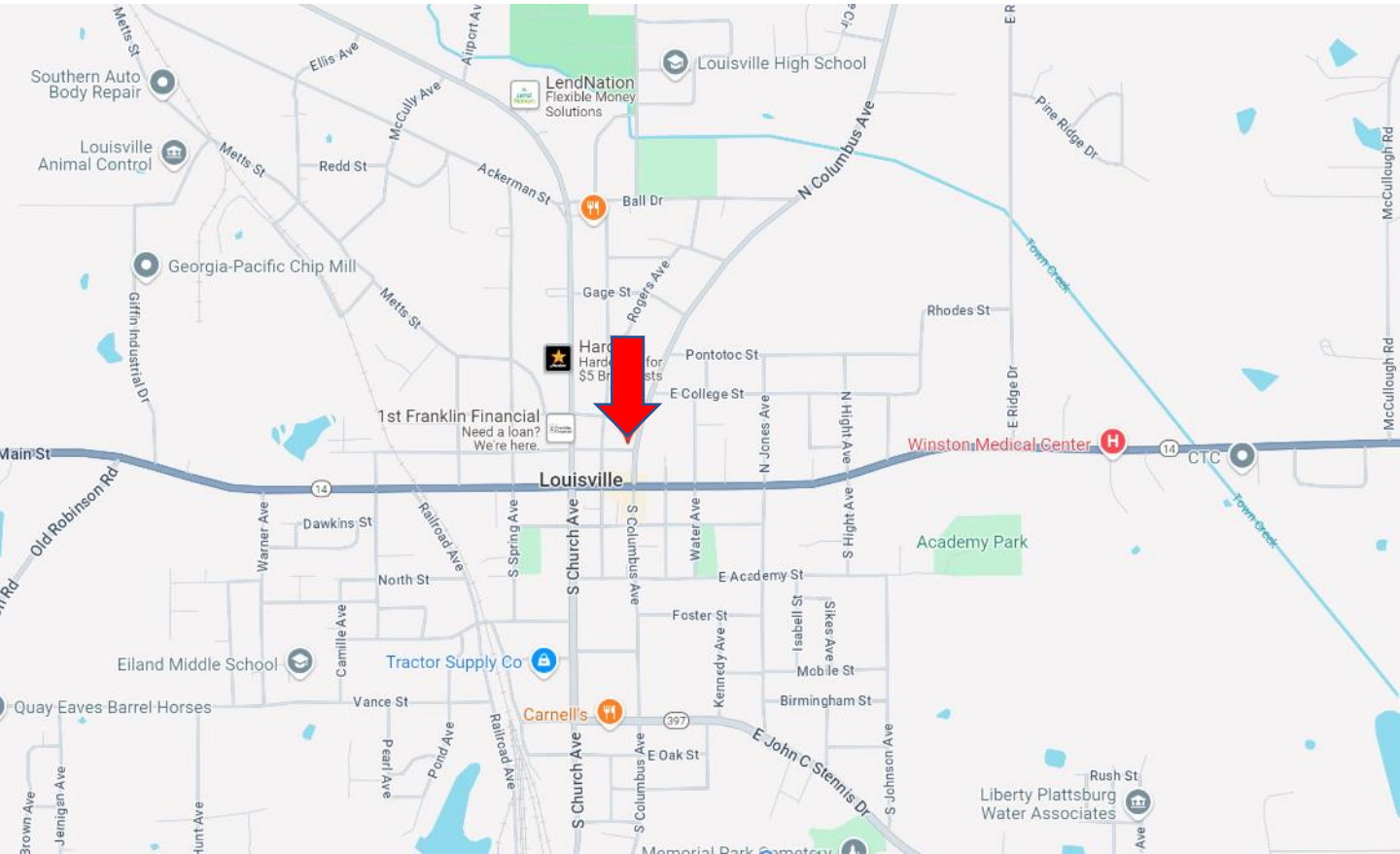
A Real Estate Expert You Can Trust

TomSmithLandandHomes.com

Information is believed to be accurate but not guaranteed.



Directional Map



Directions from the Intersection of Hwy 14 and S Church Ave in Louisville, MS: Travel North on S Church Avenue for .01 miles. Turn right onto Mill Street. After 0.1 miles, the property will be on the left. [GOOGLE MAP LINK](#)



**WALKER
TRANUM**
REALTOR®

Office: 662.268.6333

Cell: 662.769.1442

Walker@TomSmithHomes.com



Expect More. Get More.

A Real Estate Expert You Can Trust

TomSmithLandandHomes.com

Information is believed to be accurate but not guaranteed.

