

# 45 Caroline Cove, Cleveland, MS 38732 | Bolívar County | \$515,000

This spacious 3,150+ SF Bolivar County home is perfectly designed for entertainment and relaxation. Upon entering, guests are welcomed into a seamless flow between the dining and living rooms. Adjacent to the dining area, the open-concept kitchen features stainless steel appliances, a gas cooktop, double ovens, and an expansive island, making it a dream for any culinary enthusiast. Above the kitchen island, elegant light fixtures from McCarty Pottery add a touch of artistry. The primary bedroom is a true retreat, featuring two walk-in closets and a luxurious en-suite bathroom. Additional bedrooms are thoughtfully connected via a Jack-and-Jill bathroom, enhancing privacy and convenience. A workshop is connected to the home, while there is a shed to store extra equipment. To see this beautiful, four-bedroom, two-and-a-half-bathroom home for yourself, call Tracey Bell to schedule your private showing!



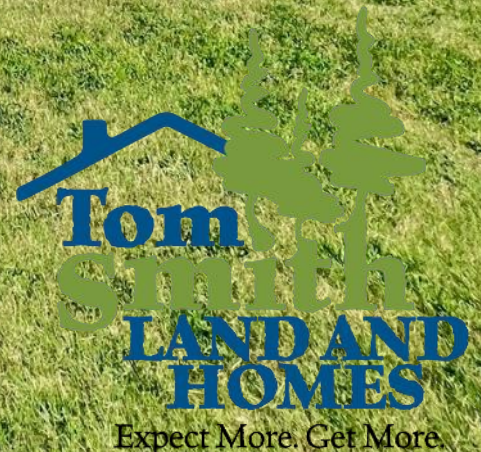
**TRACEY  
BELL**

MANAGING BROKER

Office: 662.441.2500

Cell: 662.719.4720

Tracey@TomSmithLand.com



## A Real Estate Expert You Can Trust

TomSmithLandandHomes.com

Information is believed to be accurate but not guaranteed.







**A Real Estate Expert  
You Can Trust!**

**TRACEY BELL**

MANAGING BROKER

O: 662.441.2500 C: 662.719.4720

Tracey@TomSmithLand.com

TomSmithLandandHomes.com

**Tom  
Smith  
LAND AND  
HOMES**

Expect More. Get More.

2011-2024  
BEST  
BROKERAGES

Information is believed to be accurate but not guaranteed.





The primary suite features two walk-in closets and an en-suite bathroom with two separate vanities, a walk-in shower, a soaking jacuzzi tub, and a private toilet room.



**A Real Estate Expert**  
*You Can Trust!*

**TRACEY BELL**

MANAGING BROKER

O: 662.441.2500 C: 662.719.4720

Tracey@TomSmithLand.com

TomSmithLandandHomes.com

**Tom Smith**  
**LAND AND HOMES**

Expect More. Get More.

LandAgent  
2011-2024  
NATIONAL  
BEST  
BROKERAGES

Information is believed to be accurate but not guaranteed.





**A Real Estate Expert**  
*You Can Trust!*

**TRACEY BELL**

MANAGING BROKER

O: 662.441.2500 C: 662.719.4720

Tracey@TomSmithLand.com

TomSmithLandandHomes.com

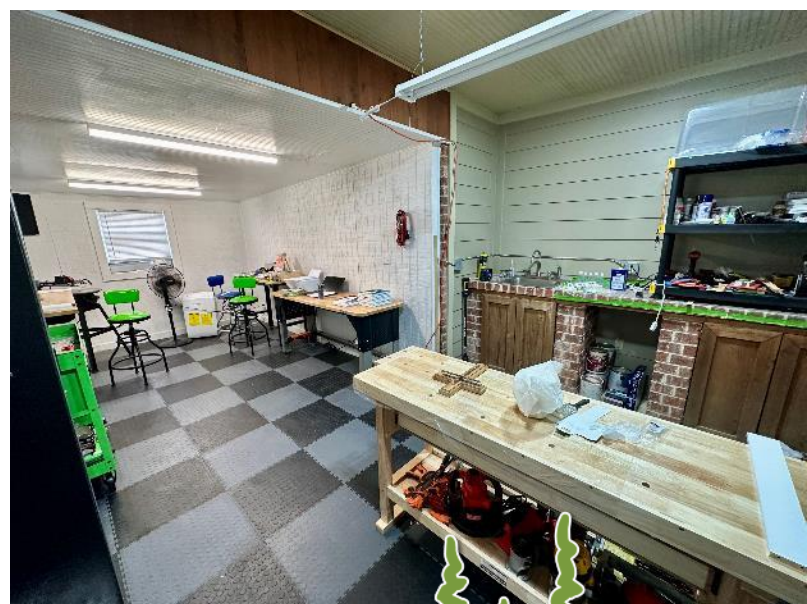
**Tom Smith**  
**LAND AND HOMES**

Expect More. Get More.

LandAgent  
2011-2024  
NATIONAL  
BEST  
BROKERAGES

Information is believed to be accurate but not guaranteed.





**A Real Estate Expert  
You Can Trust!**

**TRACEY BELL**

MANAGING BROKER

O: 662.441.2500 C: 662.719.4720

Tracey@TomSmithLand.com

TomSmithLandandHomes.com

**Tom  
Smith  
LAND AND  
HOMES**

Expect More. Get More.

LandAgent  
2011-2024  
NATIONAL  
BEST  
BROKERAGES

Information is believed to be accurate but not guaranteed.





## A Real Estate Expert *You Can Trust!*

**TRACEY BELL**

MANAGING BROKER

O: 662.441.2500 C: 662.719.4720

Tracey@TomSmithLand.com

TomSmithLandandHomes.com



Expect More. Get More.



Information is believed to be accurate but not guaranteed.



- 4 Bedrooms
- 2.5 Bathrooms
- Upstairs Bonus Room
- Storage Shed
- Connected Workshop that Could Be Converted to Outdoor Entertaining
- Screened-In Patio
- Outside of Cleveland City Limits
- Large Privacy-Fenced Backyard



**A Real Estate Expert**  
*You Can Trust!*

**TRACEY BELL**

MANAGING BROKER

O: 662.441.2500 C: 662.719.4720

Tracey@TomSmithLand.com

TomSmithLandandHomes.com



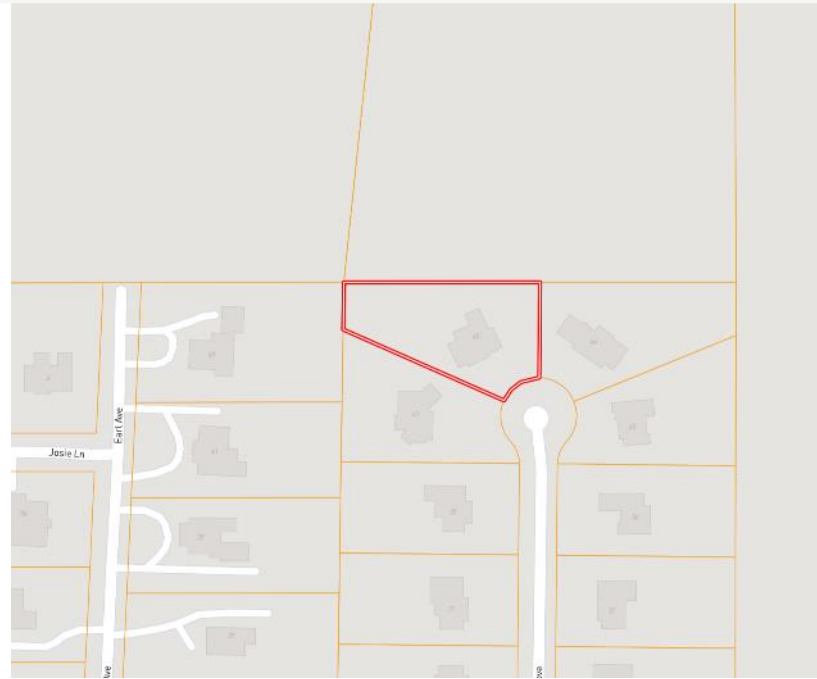
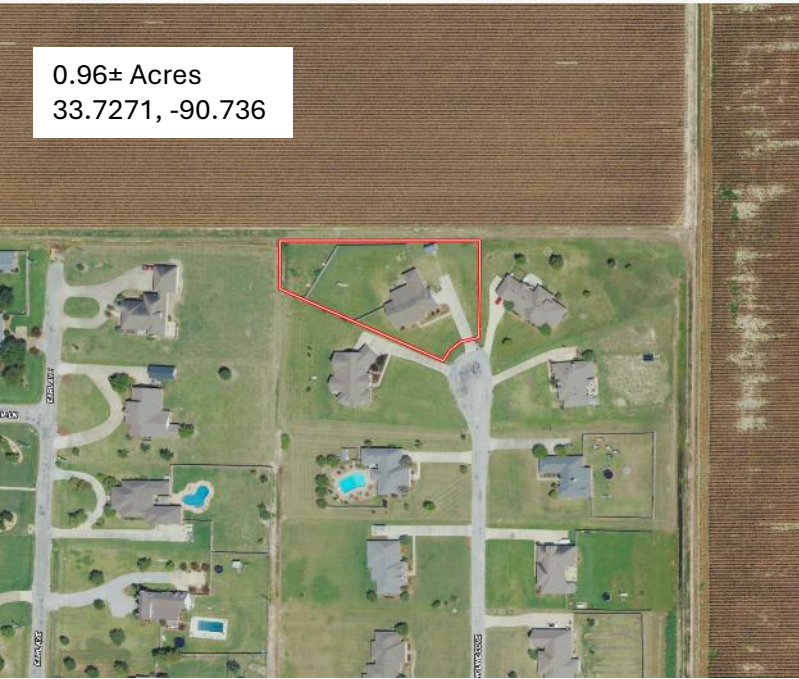
Expect More. Get More.



Information is believed to be accurate but not guaranteed.



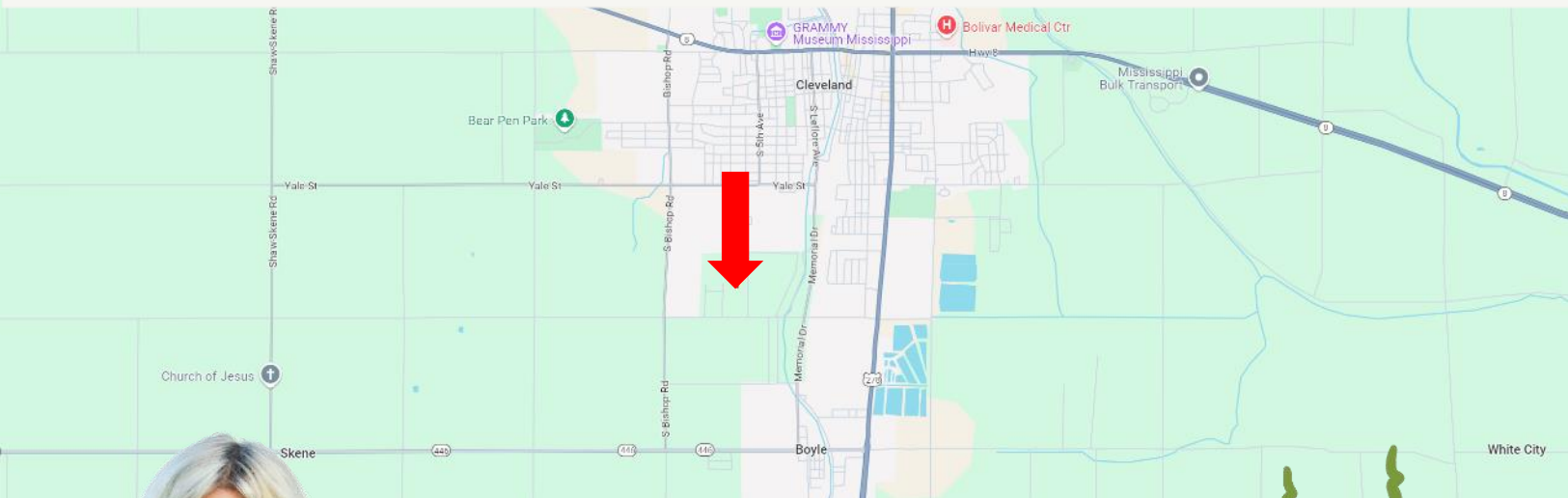
0.96± Acres  
33.7271, -90.736



**Directions from Hwy 8 & Hwy 61 in Cleveland:** Travel south on Hwy 61 for 2 miles. Turn right onto Laughlin Road and travel 1 mile. Turn right onto Caroline Cove and travel 0.2 miles. The home will be at the end of the cul-de-sac.

**Address: 45 Caroline Cove, Cleveland, MS 38732**

[Google Maps Link](#)



**TRACEY  
BELL**

MANAGING BROKER

Office: 662.441.2500

Cell: 662.719.4720

[Tracey@TomSmithLand.com](mailto:Tracey@TomSmithLand.com)



Expect More. Get More.

**A Real Estate Expert You Can Trust**

[TomSmithLandandHomes.com](http://TomSmithLandandHomes.com)

Information is believed to be accurate but not guaranteed.

