

Serene Wooded Lot At River Trace in the Union Harbor Resort Tishomingo County, MS



\$25,000

Discover Lot 31 in The Woodlands at River Trace, located within the Union Harbor Resort in Tishomingo County, MS. This serene, 0.80± acre wooded residential lot is ideally situated at the end of a cul-de-sac in a gated community, offering both privacy and access to utilities. Enjoy the beauty of nature and the convenience of nearby Pickwick Lake. It's the ideal spot to build your dream home or weekend retreat. Call Tom today for more details!



**TOM
WISEMAN**

ASSOCIATE BROKER

Office: 662.268.6333

Cell: 662.317.0467

TWiseman@TomSmithLand.com



Expect More. Get More.

A Real Estate Expert You Can Trust

TomSmithLandandHomes.com

Information is believed to be accurate but not guaranteed.



AERIAL MAP



[CLICK HERE FOR INTERACTIVE LINK](#)

A Real Estate Expert
You Can Trust!

TOM WISEMAN
ASSOCIATE BROKER

O: 662.268.6333 C: 662.317.0467

TWiseman@TomSmithLand.com

TomSmithLandandHomes.com

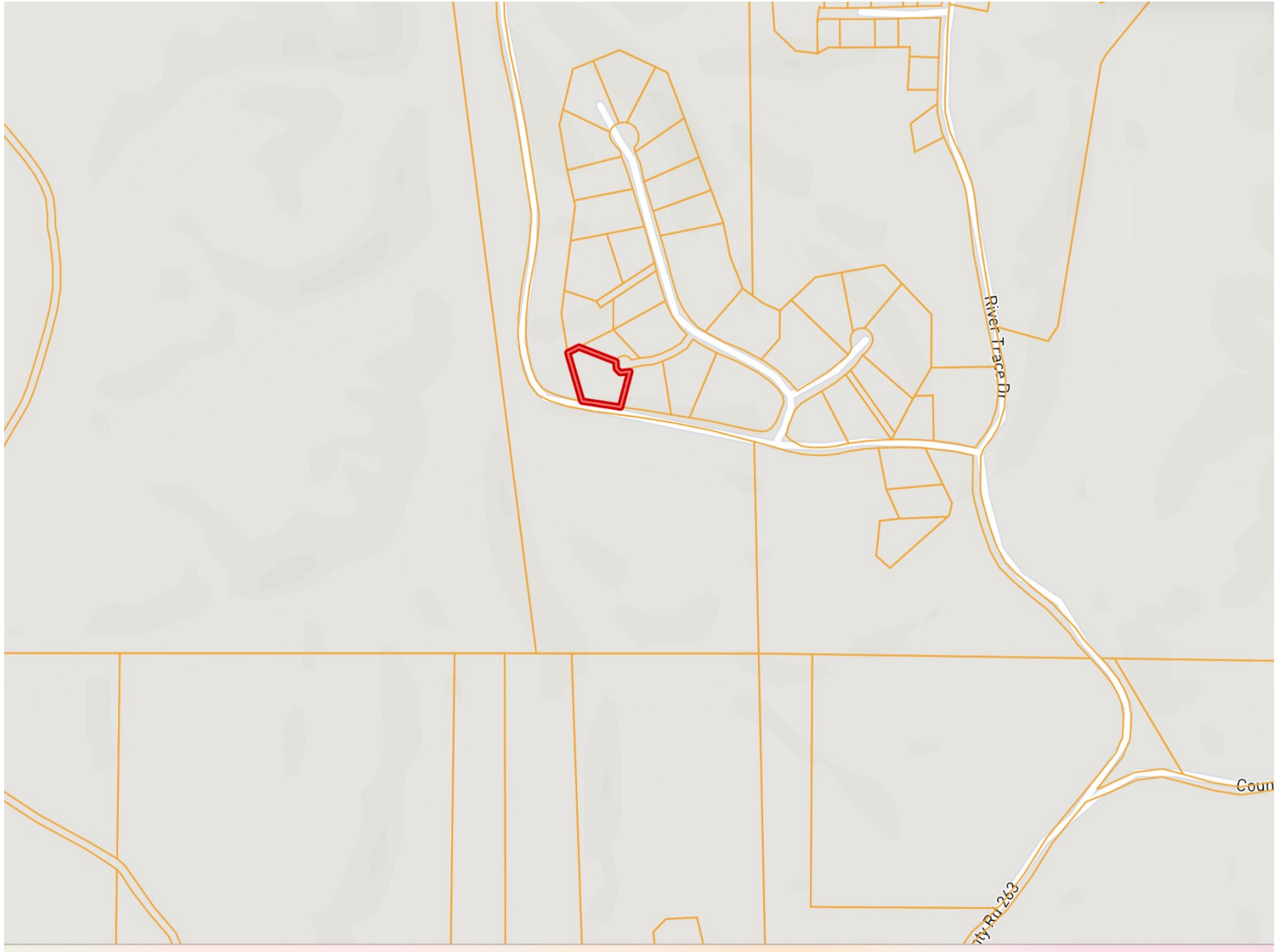


Expect More. Get More.



Information is believed to be accurate but not guaranteed.

OWNERSHIP MAP



A Real Estate Expert
You Can Trust!

TOM WISEMAN

ASSOCIATE BROKER

O: 662.268.6333 C: 662.317.0467

TWiseman@TomSmithLand.com

TomSmithLandandHomes.com

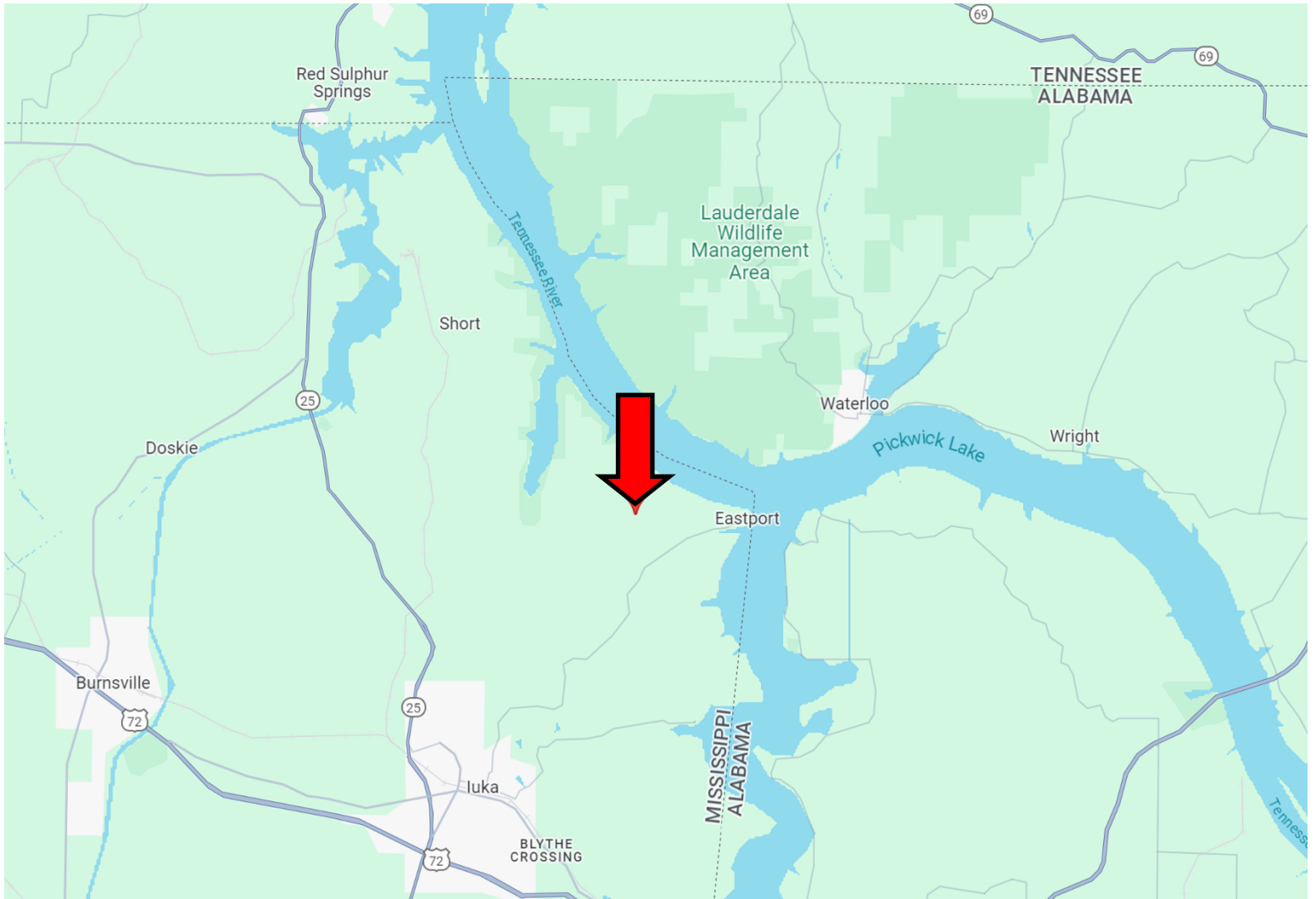


Expect More. Get More.

Information is believed to be accurate but not guaranteed.



DIRECTIONAL MAP



Directions from the intersection of Hwy 72 and Hwy 25 in Iuka, MS: Travel north on Hwy 25/Veterans Memorial Drive for 0.7 miles. Turn right onto Battleground Dr. and travel 1 mile. Turn right onto W Quitman St. and travel 0.9 miles. Turn left onto Spring St. and travel 0.1 mile. Turn right onto E Eastport St. and travel 1.5 miles. Continue onto CR 956 and travel 4.4 miles. Turn left onto CR 56 and travel 0.5 miles. Turn right onto CR 263 and travel 0.5 miles. Continue straight onto River Trace Dr for 0.3 miles. Turn left onto Marina Trace Dr. After 0.3 miles, the property will be on the right. [GOOGLE MAP LINK](#)



**TOM
WISEMAN**

ASSOCIATE BROKER

Office: 662.268.6333

Cell: 662.317.0467

TWiseman@TomSmithLand.com



Expect More. Get More.

A Real Estate Expert You Can Trust

TomSmithLandandHomes.com

Information is believed to be accurate but not guaranteed.

