

Prime 5.66±Acre Lot for Commercial or Residential Use in Pine Bluff, AR

\$100,000



Located in Jefferson County, AR, this 5.66± acre lot offers incredible road frontage on two sides, providing excellent visibility and access. Positioned just north of the W&A Manufacturing facility, this property is zoned for I-3, B-2, and B-3, allowing for commercial and residential possibilities. This lot is ready for development, and water, electricity, and sewer are already available. Whether you're looking to expand your business or create a new residential space, this versatile property offers the flexibility to meet your needs.

Don't miss out on this prime location in Pine Bluff, Arkansas! Contact Bruce for more details or to schedule a visit!



BRUCE WEST

ALC®, ASSOCIATE BROKER
ACCREDITED LAND CONSULTANT

Office: 662.441.2500

Cell: 662.873.3007

Bruce@TomSmithLand.com



Expect More. Get More.

A Real Estate Expert You Can Trust

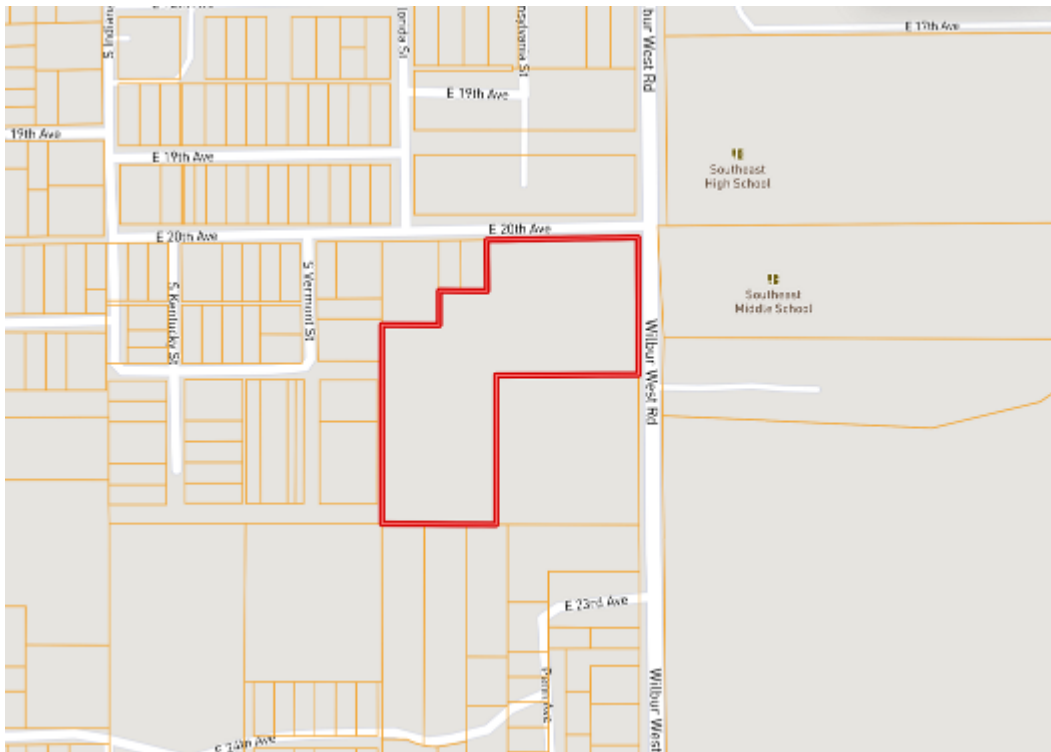
TomSmithLandandHomes.com

Information is believed to be accurate but not guaranteed.





Aerial Map



Ownership Map

[LandId Interactive Map Link](#)

A Real Estate Expert
You Can Trust!

BRUCE WEST

ALC[®], ASSOCIATE BROKER
ACCREDITED LAND CONSULTANT

O: 662.441.2500 C: 662.873.3007

Bruce@TomSmithLand.com

TomSmithLandandHomes.com

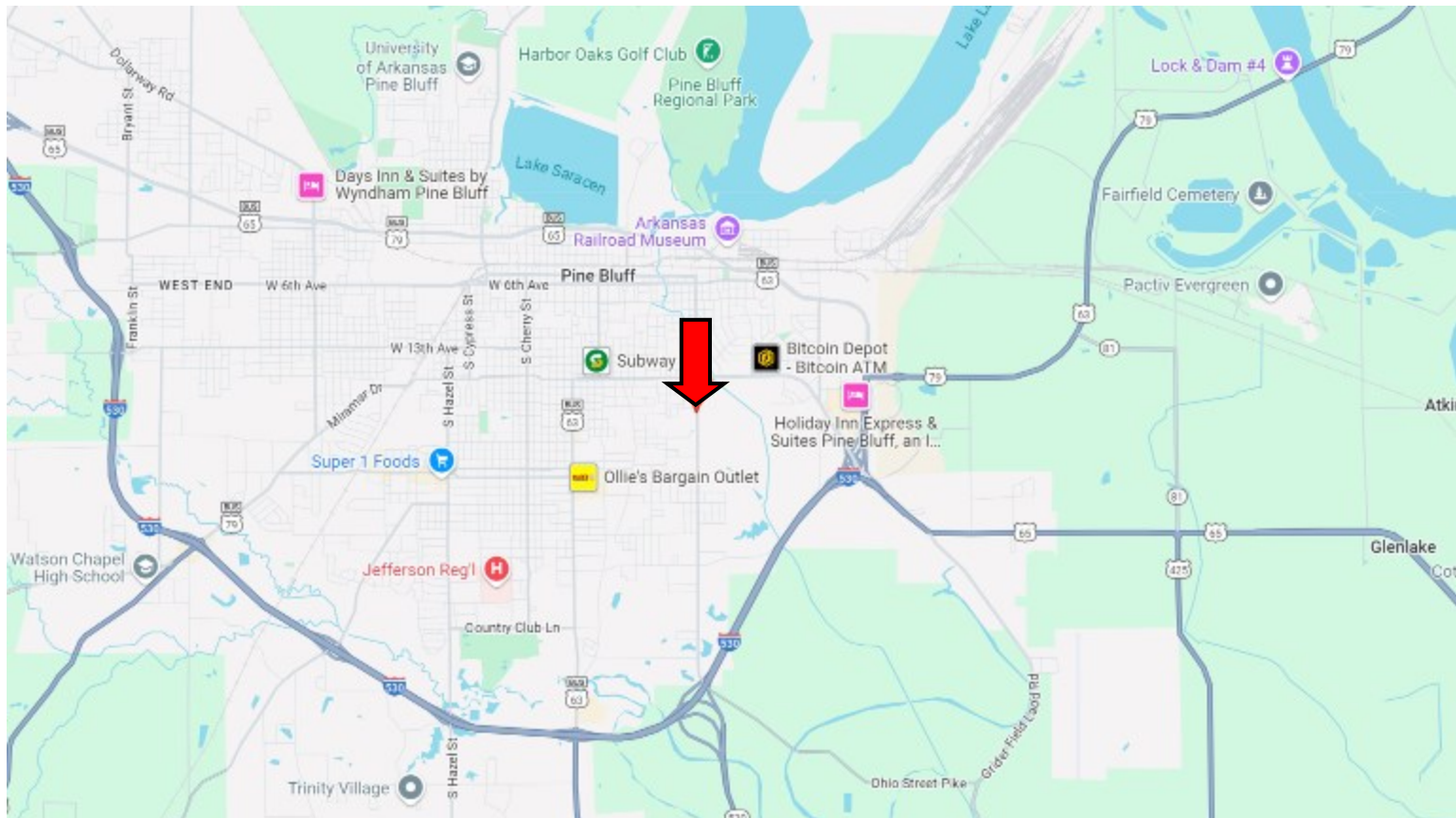


Expect More. Get More.



Information is believed to be accurate but not guaranteed.

Directional Map



Directions from I-530 and Hwy 65 in Pine Bluff, AR: Take a slight right onto the US-63 N/US-79 N/US-65 Bus N ramp to AR-190/Downtown. Turn left on E Harding Ave. and travel 1.8 miles. Turn left onto S Ohio St./Wilbur West Rd. After 0.3 miles, the property will be on your right. [GOOGLE MAP LINK](#)



**BRUCE
WEST**

ALC®, ASSOCIATE BROKER
ACCREDITED LAND CONSULTANT

Office: 662.441.2500

Cell: 662.873.3007

Bruce@TomSmithLand.com



Expect More. Get More.

A Real Estate Expert You Can Trust

TomSmithLandandHomes.com

Information is believed to be accurate but not guaranteed.

