

TURNKEY HUNTING PROPERTY

68± Acres in Monroe County, MS



\$204,000

Are you looking for a property that's ready to hunt this season? This 68± acre tract in Monroe County, MS, just 6.6 miles from Amory, might be perfect for you. With abundant deer, ducks, turkey, and small game, this land has it all. A well-established road system offers easy access to two food plots and a duck hole, with deer sightings noted during the initial viewing. The property features a mix of hardwoods and pines and a potential home or cabin site at the front, making it an ideal weekend hunting camp. Utilities are readily available. Contact Brady or Walker to schedule a showing today!



WALKER TRANUM
REALTOR®

O: 662.268.6333 | C: 662.769.1442
Walker@TomSmithHomes.com



BRADY RICHARDSON
REALTOR®

O: 601.898.2772 | C: 662.418.8791
Brady@TomSmithLand.com

TomSmithLandandHomes.com

Information is believed to be accurate but not guaranteed.





WALKER TRANUM
REALTOR®

O: 662.268.6333 | C: 662.769.1442
Walker@TomSmithHomes.com



BRADY RICHARDSON
REALTOR®

O: 601.898.2772 | C: 662.418.8791
Brady@TomSmithLand.com

TomSmithLandandHomes.com

Information is believed to be accurate but not guaranteed.





WALKER TRANUM
REALTOR®

O: 662.268.6333 | C: 662.769.1442
Walker@TomSmithHomes.com



BRADY RICHARDSON
REALTOR®

O: 601.898.2772 | C: 662.418.8791
Brady@TomSmithLand.com

TomSmithLandandHomes.com

Information is believed to be accurate but not guaranteed.



Internal Roads, Deer Stand Locations & Duck Hole



WALKER TRANUM
REALTOR®

O: 662.268.6333 | C: 662.769.1442
Walker@TomSmithHomes.com



BRADY RICHARDSON
REALTOR®

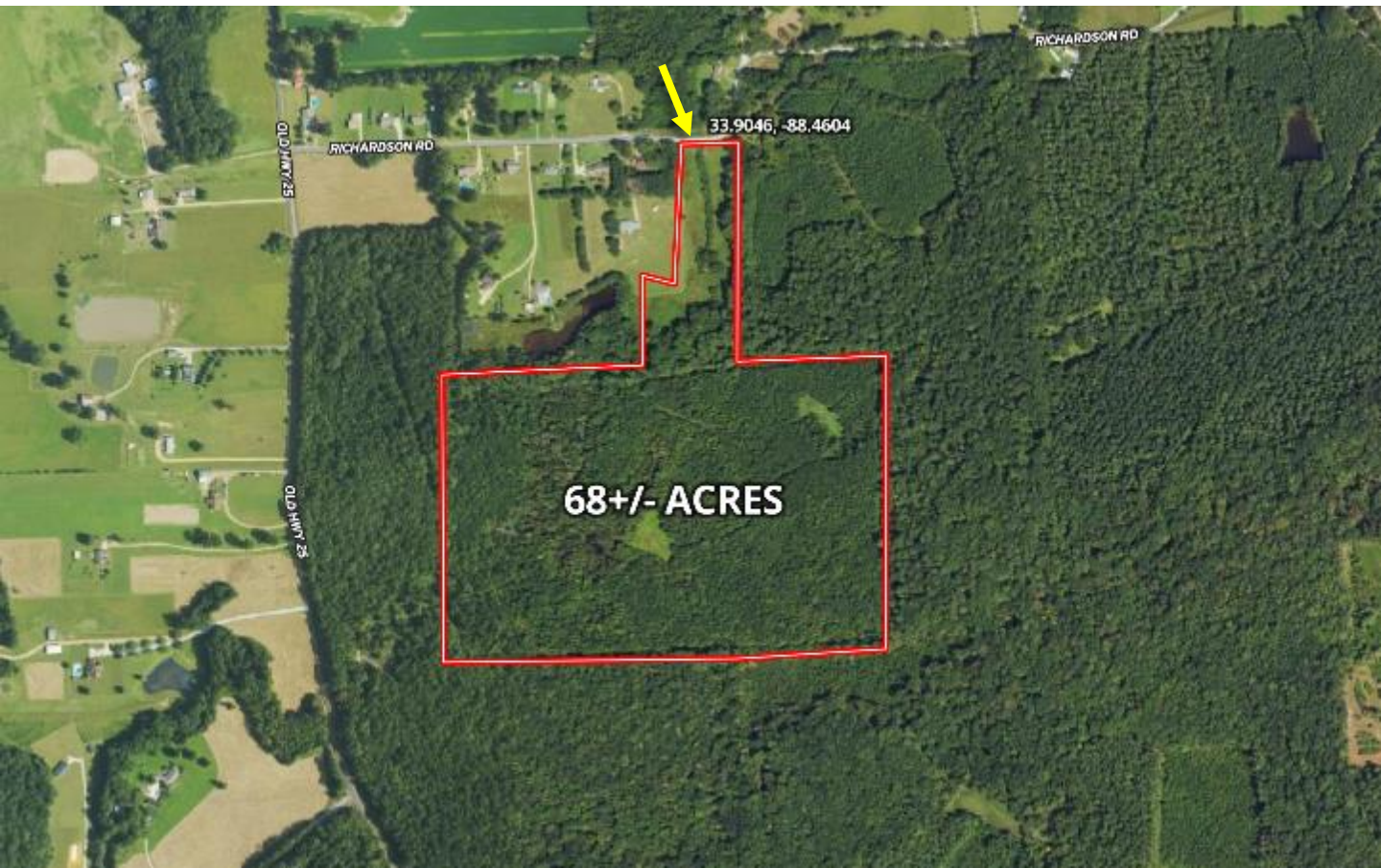
O: 601.898.2772 | C: 662.418.8791
Brady@TomSmithLand.com

TomSmithLandandHomes.com

Information is believed to be accurate but not guaranteed.



AERIAL MAP



[CLICK HERE FOR AN INTERACTIVE MAP LINK](#)

WALKER TRANUM
REALTOR®

O: 662.268.6333 | C: 662.769.1442
Walker@TomSmithHomes.com



BRADY RICHARDSON
REALTOR®

O: 601.898.2772 | C: 662.418.8791
Brady@TomSmithLand.com

TomSmithLandandHomes.com

Information is believed to be accurate but not guaranteed.



OWNERSHIP MAP



TOPO MAP



WALKER TRANUM
REALTOR®

O: 662.268.6333 | C: 662.769.1442
Walker@TomSmithHomes.com



BRADY RICHARDSON
REALTOR®

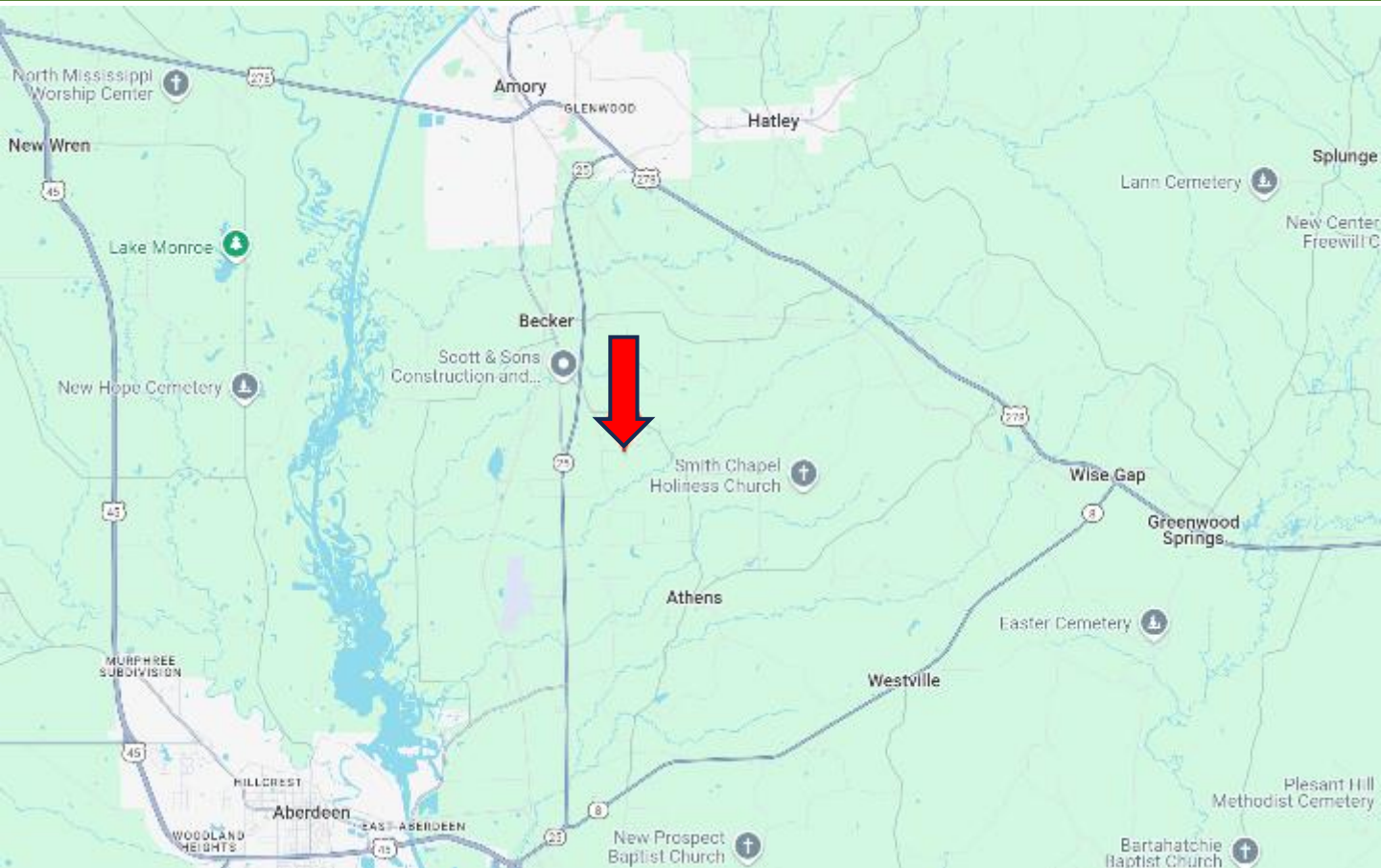
O: 601.898.2772 | C: 662.418.8791
Brady@TomSmithLand.com

TomSmithLandandHomes.com

Information is believed to be accurate but not guaranteed.



DIRECTIONAL MAP



Directions from the intersection of Hwy 278 and Hwy 25 South in Amory, MS: Travel south on Hwy 25 for 4 miles. Turn left onto Greenbriar Rd. and travel 0.5 miles. Turn left onto Old Hwy 25 S and travel 0.6 miles. Turn left onto Richardson Road. After 0.4 miles, the property will be on your right. [Google Map Link](#)



WALKER TRANUM
REALTOR®

O: 662.268.6333 | C: 662.769.1442
Walker@TomSmithHomes.com



BRADY RICHARDSON
REALTOR®

O: 601.898.2772 | C: 662.418.8791
Brady@TomSmithLand.com