

3.11 +/- Acre Lot Webster County, MS



\$31,500

Nestled across the road from Eupora Lake, this stunning 3.11-acre lot offers a rare opportunity to create your dream home in a sought-after location. With one acre already cleared and ready for construction, you can start building with minimal clearing work left. The lot provides ample space for privacy and outdoor activities. This lot is conveniently close to the amenities of Eupora, just 5 minutes from Eupora High School. This property is perfect for building a custom home in a peaceful and scenic environment.



**LELAND
SELBY**
REALTOR®

Office: 662.268.6333
Cell: 662.394.9876
Leland@TomSmithLand.com



Expect More. Get More.

A Real Estate Expert You Can Trust

TomSmithLandandHomes.com

Information is believed to be accurate but not guaranteed.





*A Real Estate Expert
You Can Trust!*



LELAND SELBY

REALTOR®

O: 662.268.6333 C: 662.394.9876

Leland@TomSmithLand.com

TomSmithLandandHomes.com

Expect More. Get More.



Information is believed to be accurate but not guaranteed.

Ariel Map



Click [Here](#) for an Interactive Map Link

A Real Estate Expert
You Can Trust!

LELAND SELBY
REALTOR®

O: 662.268.6333 C: 662.394.9876

Leland@TomSmithLand.com

TomSmithLandandHomes.com

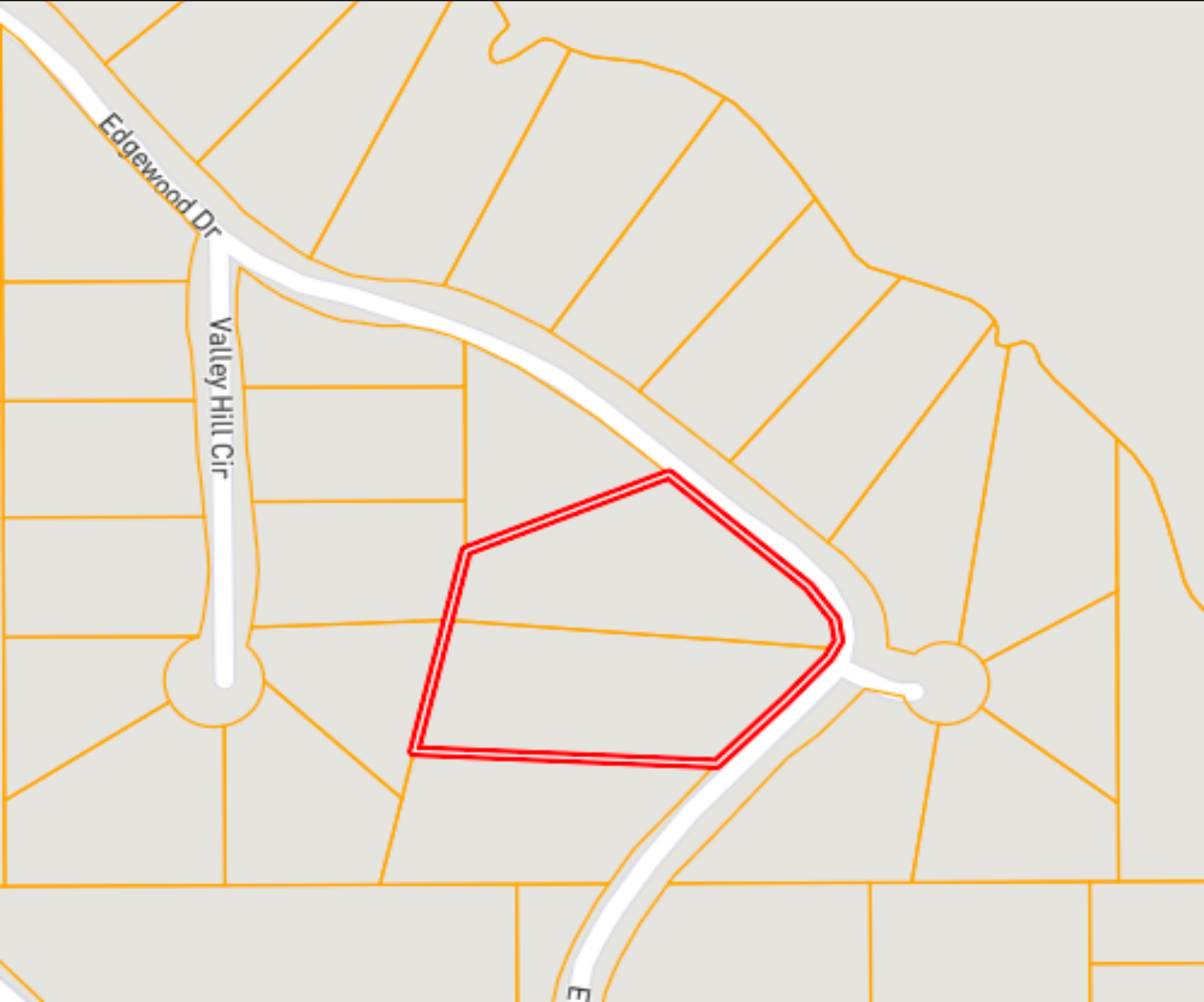


Expect More. Get More.



Information is believed to be accurate but not guaranteed.

Ownership Map



A Real Estate Expert
You Can Trust!

LELAND SELBY

REALTOR®

O: 662.268.6333 C: 662.394.9876

Leland@TomSmithLand.com

TomSmithLandandHomes.com



Expect More. Get More.



Information is believed to be accurate but not guaranteed.

Directional Map



Directions from Eupora, MS: Starting on Clark Avenue in 300 ft. turn left onto Veterans Memorial Blvd, in 0.3 mi turn left onto Hall Rd, in 0.7 mi turn right onto Martin Luther King Jr. Dr., in 0.5 mi turn right onto Edgewood Dr., and in 0.3 mi the destination is on your left. [Google Map Link](#)



**LELAND
SELBY**

REALTOR®

Office: 662.268.6333

Cell: 662.394.9876

Leland@TomSmithLand.com



Expect More. Get More.

A Real Estate Expert You Can Trust

TomSmithLandandHomes.com

Information is believed to be accurate but not guaranteed.

