

4-Bedroom, 3.5-Bathroom Home 9 Christy Drive, Cleveland, MS

\$545,000



Just outside Cleveland's city limits in Bolivar County, this 3,749± SF move-in ready executive home features four bedrooms and 3.5 bathrooms on a 1.08± acre lot. With two gas fireplaces, an open floor plan, and ample natural light, it is an excellent home for entertaining and holiday events. The house has three bedrooms on one side, leaving the opposite side for a guest or mother-in-law suite and a bonus room above the three-car garage. The covered back porch overlooks an open field where you can enjoy many Delta sunsets. To see this home's great features, call Tracey Bell to schedule your private showing!



**TRACEY
BELL**

MANAGING BROKER

Office: 662.441.2500

Cell: 662.719.4720

Tracey@TomSmithLand.com



Expect More. Get More.

A Real Estate Expert You Can Trust

TomSmithLandandHomes.com

Information is believed to be accurate but not guaranteed.





**A Real Estate Expert
You Can Trust!**

TRACEY BELL
MANAGING BROKER
O: 662.441.2500 C: 662.719.4720
Tracey@TomSmithLand.com
TomSmithLandandHomes.com

**Tom
Smith
LAND AND
HOMES**

Expect More. Get More.



Information is believed to be accurate but not guaranteed.



**A Real Estate Expert
You Can Trust!**

TRACEY BELL

MANAGING BROKER

O: 662.441.2500 C: 662.719.4720

Tracey@TomSmithLand.com

TomSmithLandandHomes.com

**Tom
Smith
LAND AND
HOMES**

Expect More. Get More.

LandReport
2011-2024
BEST
BROKERAGES

Information is believed to be accurate but not guaranteed.



A Real Estate Expert
You Can Trust!

TRACEY BELL
 MANAGING BROKER
 O: 662.441.2500 C: 662.719.4720
 Tracey@TomSmithLand.com
 TomSmithLandandHomes.com

Tom Smith
 LAND AND
 HOMES
 Expect More. Get More.



Information is believed to be accurate but not guaranteed.



**A Real Estate Expert
You Can Trust!**



TRACEY BELL

MANAGING BROKER

O: 662.441.2500 C: 662.719.4720

Tracey@TomSmithLand.com

TomSmithLandandHomes.com

Expect More. Get More.



Information is believed to be accurate but not guaranteed.



A Real Estate Expert *You Can Trust!*

TRACEY BELL

MANAGING BROKER

O: 662.441.2500 C: 662.719.4720

Tracey@TomSmithLand.com

TomSmithLandandHomes.com



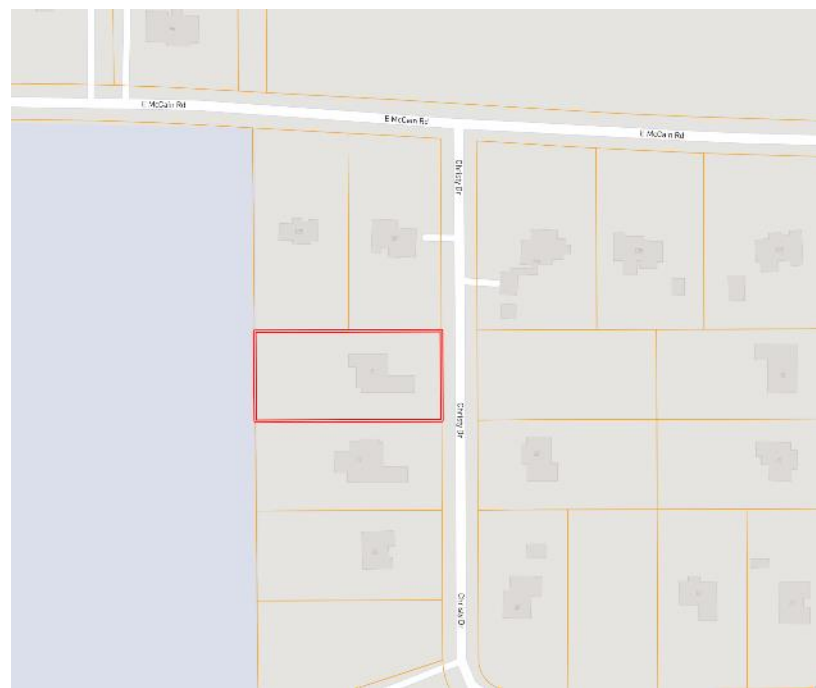
Expect More. Get More.



Information is believed to be accurate but not guaranteed.



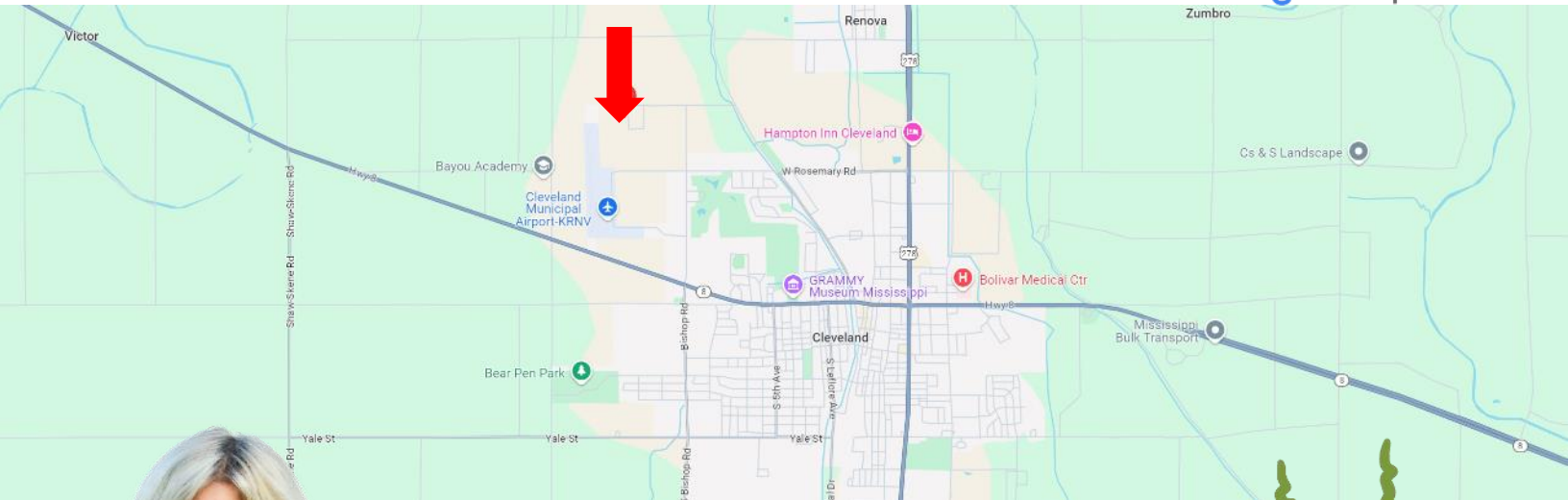
1.08± Acres
33.7683, -90.7531



Directions from Hwy 8 & Hwy 61 in Cleveland: Travel west on East Sunflower Road for 0.4 miles. Turn right onto N. Bayou Avenue and travel 1.8 miles. Turn left onto McCain Road and travel for 0.8 miles. Turn left onto Christy Drive. After 420 feet, the home will be on the right.

Address: 9 Christy Drive, Cleveland, MS 38732

[Google Maps Link](#)



TRACEY BELL
MANAGING BROKER
Office: 662.441.2500
Cell: 662.719.4720
Tracey@TomSmithLand.com



A Real Estate Expert You Can Trust
TomSmithLandandHomes.com

