

# CHARMING TWO-STORY HOME ON 2.3+/- ACES IN AMITE COUNTY, MS



517 E. RAILROAD AVE S, GLOSTER, MS 39638

\$79,900

Located in the peaceful and growing community of Gloster, MS, in Amite County, this 2-story home offers a unique blend of historical character and potential. Built in 1902 and sitting on 2.3 acres, the property features four bedrooms, 2.5 baths, and spacious rooms with 12-foot ceilings, giving it an open feel. The home includes original hardwood floors and a bonus room that could serve as a home office or playroom. Two central units provide comfort, while an additional building offers flexibility as a guest space or man cave. The fenced yard offers privacy, and the in-ground pool provides a spot for outdoor relaxation. Multiple porches invite you to enjoy the quiet surroundings. Though the home needs some updates and repairs, it offers plenty of potential for those willing to take on a project. The large lot provides space for gardening or other outdoor activities. Located in a quiet community and just minutes from new industries, this property is well-positioned for future growth. Call Clif Cannon today to schedule a private tour!

[517 E. Railroad Ave S, Gloster, MS 39638—Google Map Link](#)



**CLIF  
CANNON**

MANAGING BROKER

Office: 601.990.5070

Cell: 601.565.1070

Clif@TomSmithLand.com



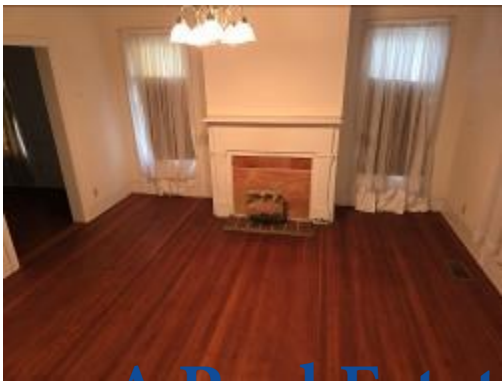
Expect More. Get More.

**A Real Estate Expert You Can Trust**

TomSmithLandandHomes.com

Information is believed to be accurate but not guaranteed.





# A Real Estate Expert You Can Trust!

**CLIF CANNON**

MANAGING BROKER

O: 601.990.5070 C: 601.565.1070

Clif@TomSmithLand.com

TomSmithLandandHomes.com



Expect More. Get More.



Information is believed to be accurate but not guaranteed.



## A Real Estate Expert You Can Trust!

**CLIF CANNON**

MANAGING BROKER

O: 601.990.5070 C: 601.565.1070

Clif@TomSmithLand.com

TomSmithLandandHomes.com



Expect More. Get More.



Information is believed to be accurate but not guaranteed.

# AERIAL MAP



[Interactive Map Link](#)

**A Real Estate Expert**  
*You Can Trust!*

**CLIF CANNON**

MANAGING BROKER

O: 601.990.5070 C: 601.565.1070

Clif@TomSmithLand.com

TomSmithLandandHomes.com



Expect More. Get More.



Information is believed to be accurate but not guaranteed.

# OWNERSHIP MAP



**A Real Estate Expert**  
*You Can Trust!*

**CLIF CANNON**

MANAGING BROKER

O: 601.990.5070 C: 601.565.1070

Clif@TomSmithLand.com

TomSmithLandandHomes.com

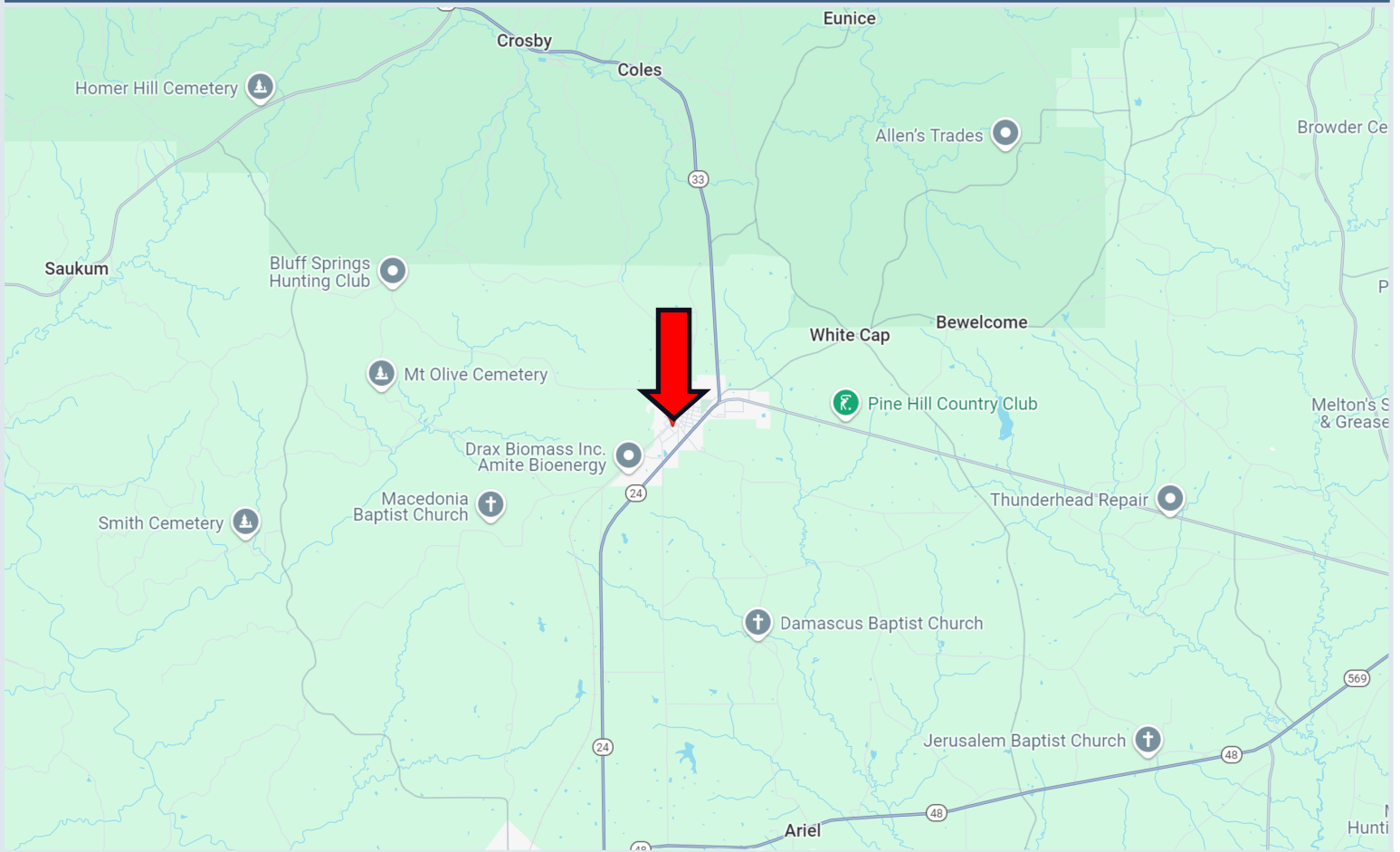


Expect More. Get More.



Information is believed to be accurate but not guaranteed.

# DIRECTIONAL MAP



Directions from the intersection of MS-33 and MS-24 in Gloster, MS: Travel west on MS-33/Lower Gloster Rd for .7 miles. Turn right onto E. Tate Drive and travel .3 miles. Turn left onto E. Railroad and travel 350 ft. The property will be on the left. **517 E. Railroad Ave S, Gloster, MS 39638**—[Google Map Link](#)



**CLIF  
CANNON**

MANAGING BROKER

Office: 601.990.5070

Cell: 601.565.1070

Clif@TomSmithLand.com



Expect More. Get More.

**A Real Estate Expert You Can Trust**

[TomSmithLandandHomes.com](http://TomSmithLandandHomes.com)

Information is believed to be accurate but not guaranteed.

