

# 50+/- Acre Recreational Tract in Pearl River County, MS



**\$125,000**

If you're searching for a great hunting property at an affordable price, this tract might be just what you need. Located along a year-round creek on the western edge, it features beautiful hardwood bottoms, offering excellent recreational and potential investment opportunities. Please note, however, that the property is landlocked with no easement, limiting access.

Directions from the intersection of US-11 and MS-26 in Poplarville, MS: Travel west on MS-26 for 7.2 miles. Turn right onto Holden Road and travel for 1 mile. [GOOGLE MAP LINK](#)



**CLIF  
CANNON**

MANAGING BROKER

Office: 601.990.5070

Cell: 601.565.1070

Clif@TomSmithLand.com



Expect More. Get More.

**A Real Estate Expert You Can Trust**

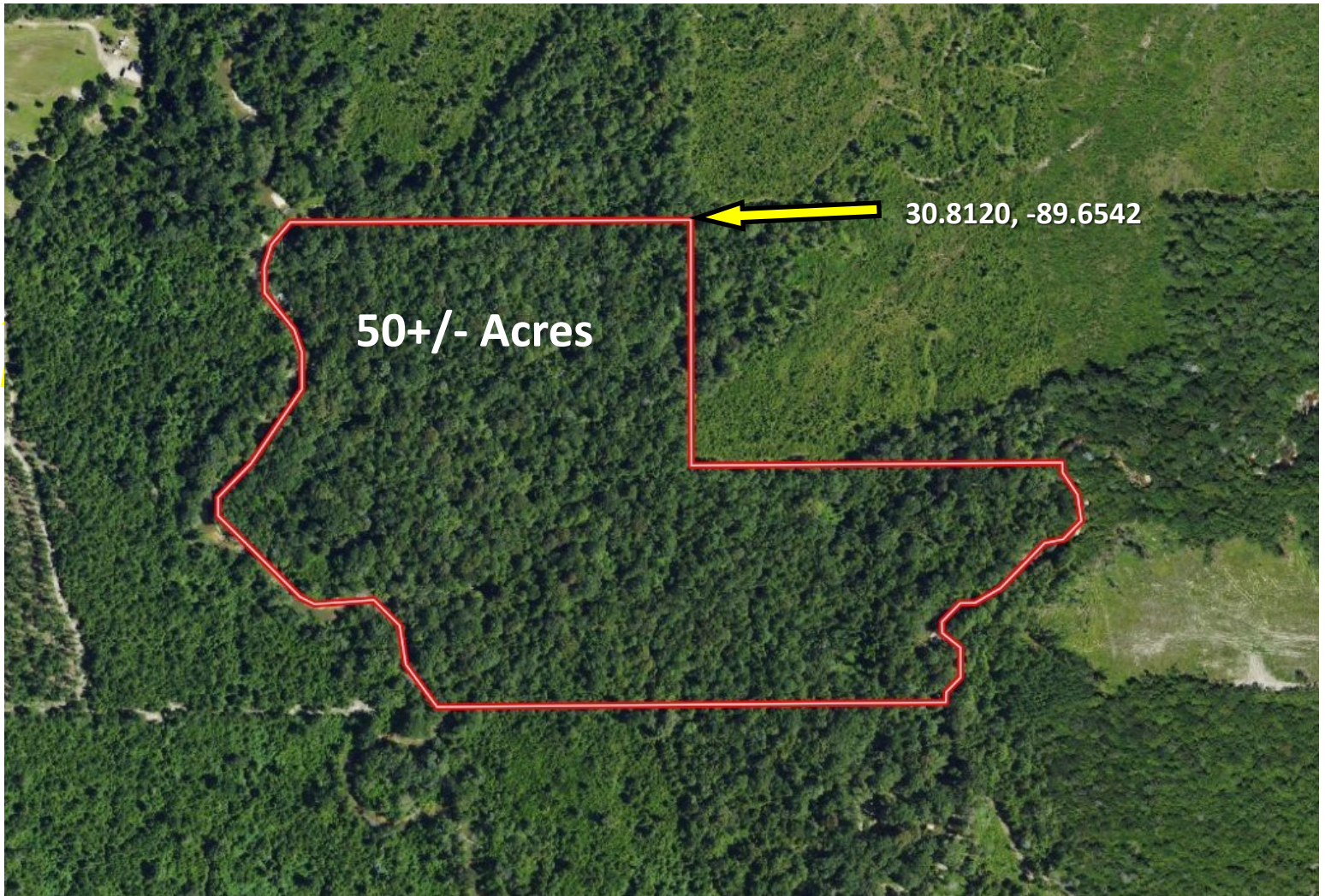
TomSmithLandandHomes.com

Information is believed to be accurate but not guaranteed.





# Aerial Map



[Click Here for the LandId Interactive Map Link](#)

**A Real Estate Expert**  
*You Can Trust!*

**CLIF CANNON**

MANAGING BROKER

O: 601.990.5070 C: 601.565.1070

Clif@TomSmithLand.com

TomSmithLandandHomes.com



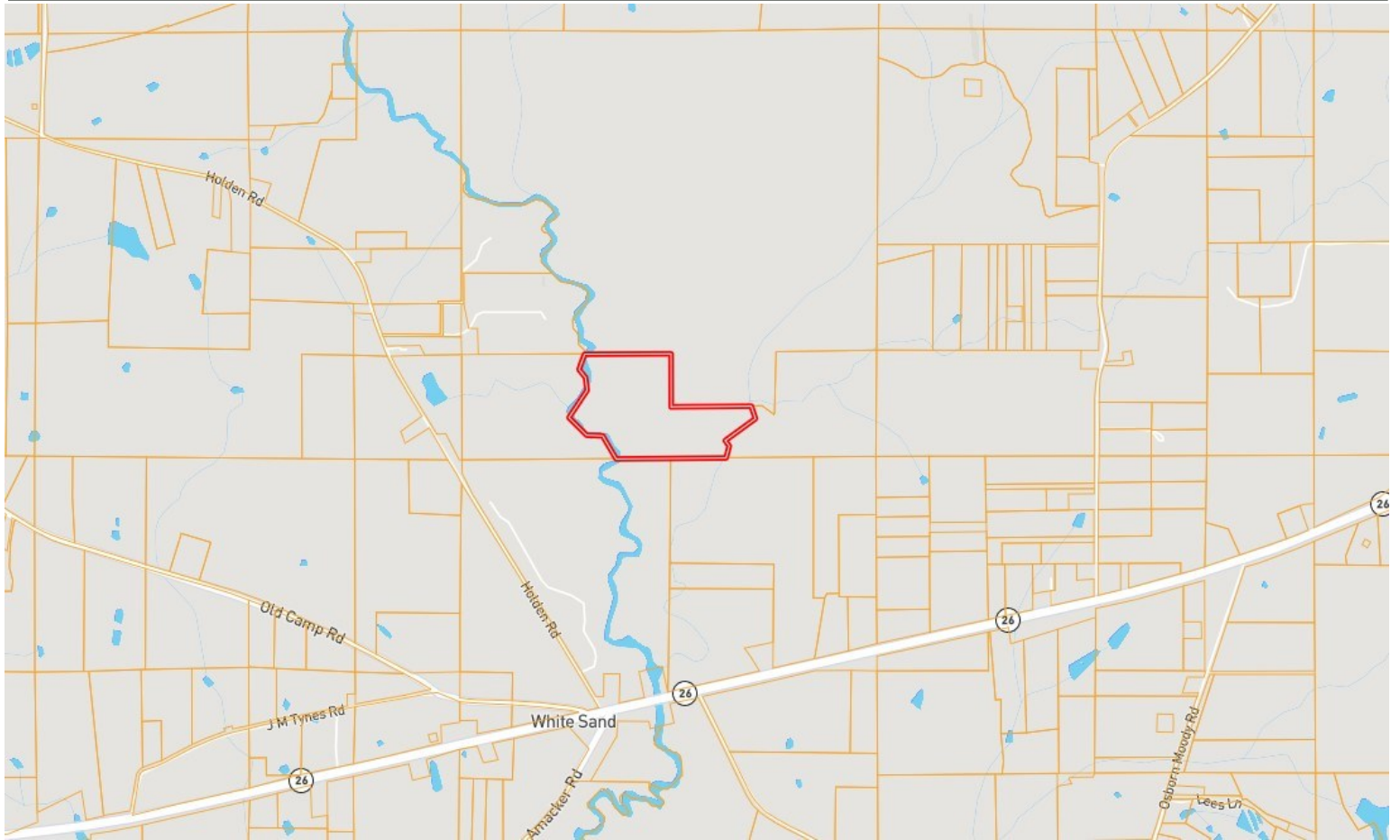
Expect More. Get More.

Information is believed to be accurate but not guaranteed.





# Ownership Map



**A Real Estate Expert**  
*You Can Trust!*

**CLIF CANNON**

MANAGING BROKER

O: 601.990.5070 C: 601.565.1070

Clif@TomSmithLand.com

TomSmithLandandHomes.com

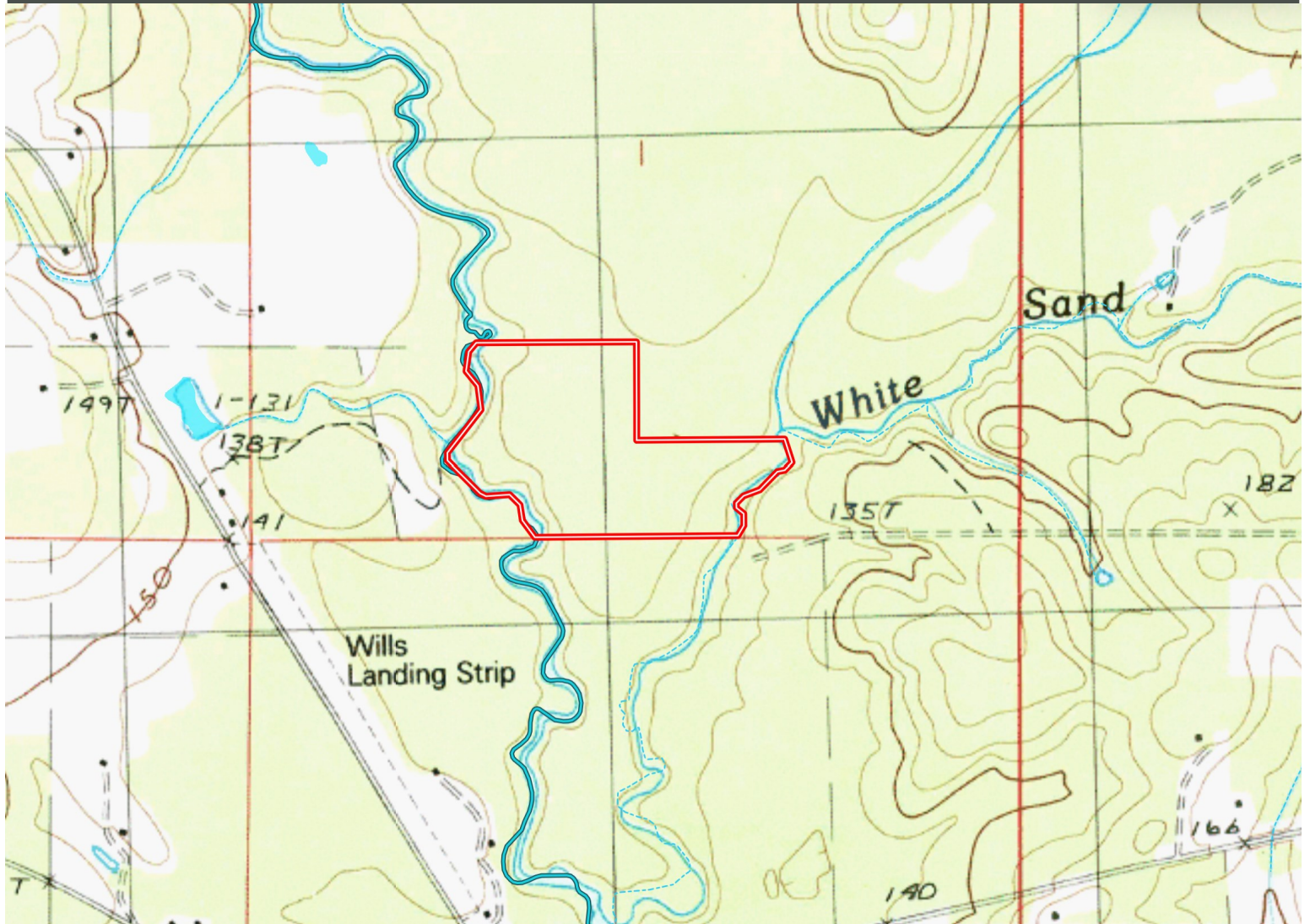


Expect More. Get More.



Information is believed to be accurate but not guaranteed.

# Topographic Map



**A Real Estate Expert**  
*You Can Trust!*

**CLIF CANNON**

MANAGING BROKER

O: 601.990.5070 C: 601.565.1070

Clif@TomSmithLand.com

TomSmithLandandHomes.com



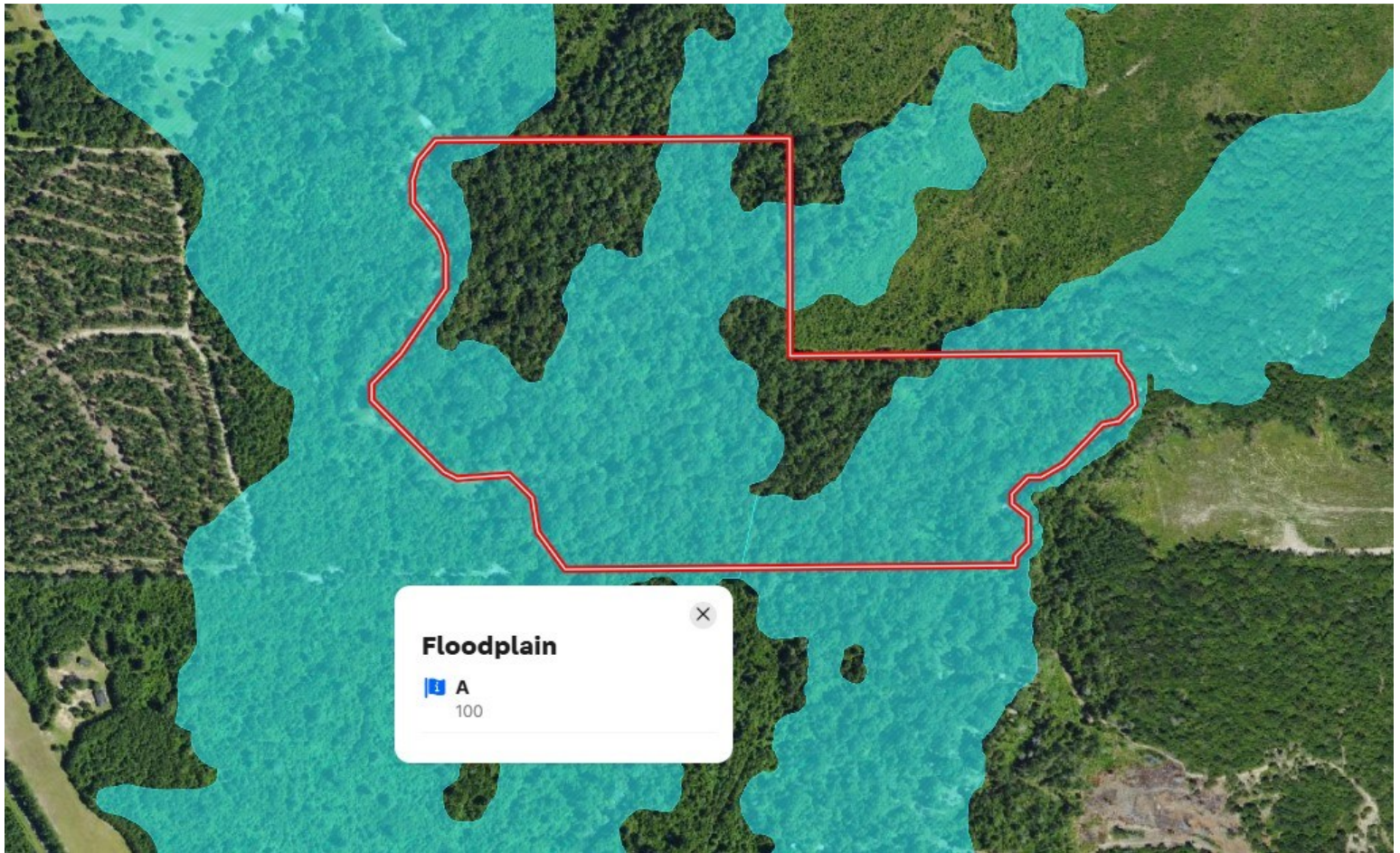
Expect More. Get More.



Information is believed to be accurate but not guaranteed.



# FLOOD MAP



**A Real Estate Expert**  
*You Can Trust!*

**CLIF CANNON**

MANAGING BROKER

O: 601.990.5070 C: 601.565.1070

Clif@TomSmithLand.com

TomSmithLandandHomes.com

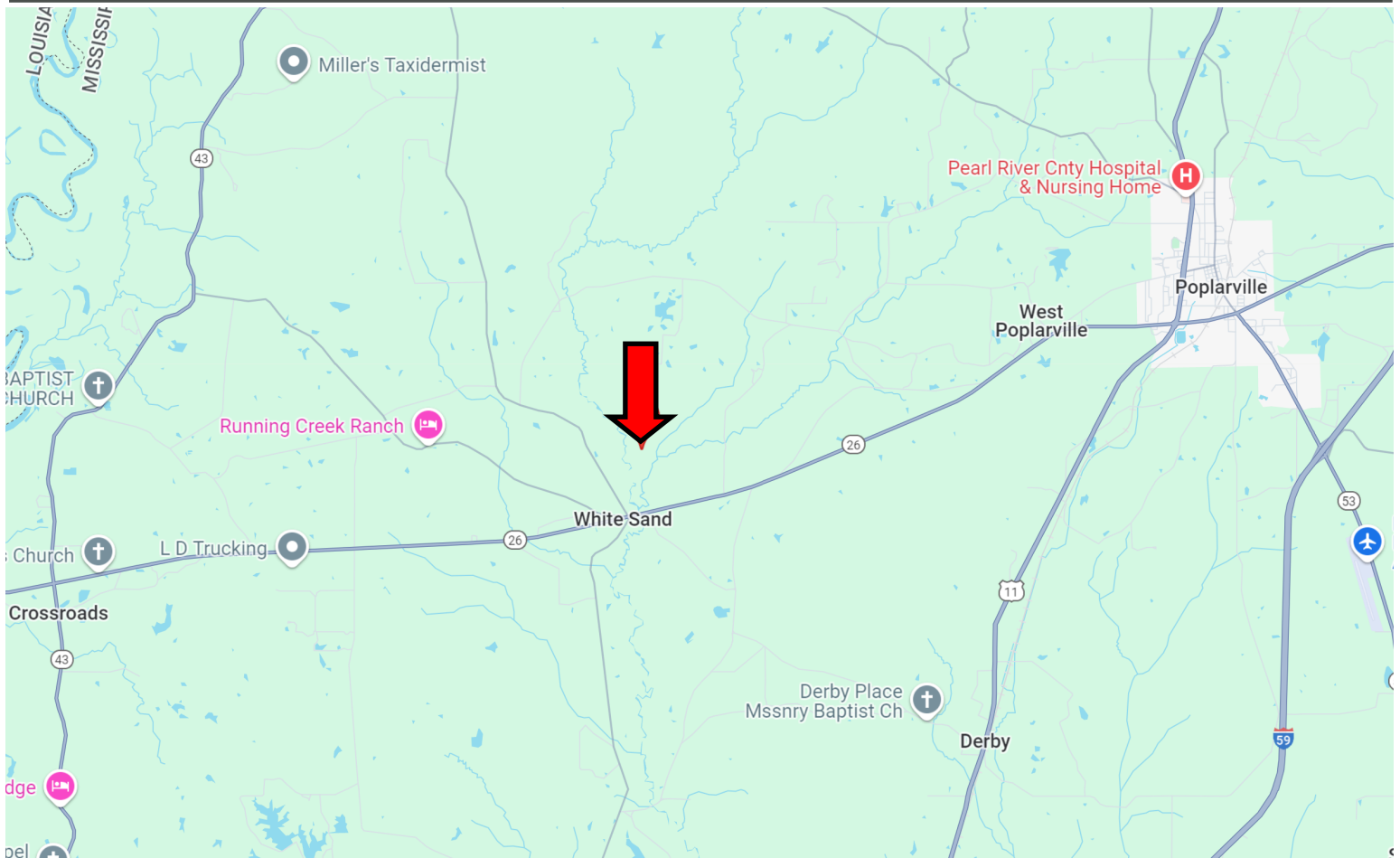


Expect More. Get More.

Information is believed to be accurate but not guaranteed.



# Directional Map



Directions from the intersection of US-11 and MS-26 in Poplarville, MS: Travel west on MS-26 for 7.2 miles. Turn right onto Holden Road and travel for 1 mile.

[GOOGLE MAP LINK](#)



**CLIF  
CANNON**  
MANAGING BROKER  
Office: 601.990.5070  
Cell: 601.565.1070  
Clif@TomSmithLand.com



Expect More. Get More.

**A Real Estate Expert You Can Trust**

TomSmithLandandHomes.com

Information is believed to be accurate but not guaranteed.

