

1.5± ACRE HOMESITE IN MARSHALL COUNTY, MS

\$25,200

Are you searching for the perfect location to build your dream home? Look no further than this 1.5± acre surveyed homesite in Marshall County, MS. Conveniently located just ten minutes south of Holly Springs and twenty-five minutes south of Oxford. This property offers a prime setting with nearby amenities. Sardis Lake is only fifteen minutes away for fishing enthusiasts, providing an ideal weekend getaway. The home site has already been cleared and is in a highly desirable area. Water is provided through a private well, and electricity is available from the city of Holly Springs. Please note the following restrictions: no mobile homes are allowed. Barndominiums are permitted, but brick framing must extend to the windows. This is the perfect place to build your dream home. Contact Kadero Edley today for a private showing!



**KADERO
EDLEY**

REALTOR®

Office: 601.898.2772

Cell: 601.488.7000

Kadero@TomSmithLand.com



Expect More. Get More.

A Real Estate Expert You Can Trust

TomSmithLandandHomes.com

Information is believed to be accurate but not guaranteed.





KADERO EDLEY

REALTOR®

Office: 601.898.2772

Cell: 601.488.7000

Kadero@TomSmithLand.com



Expect More. Get More.

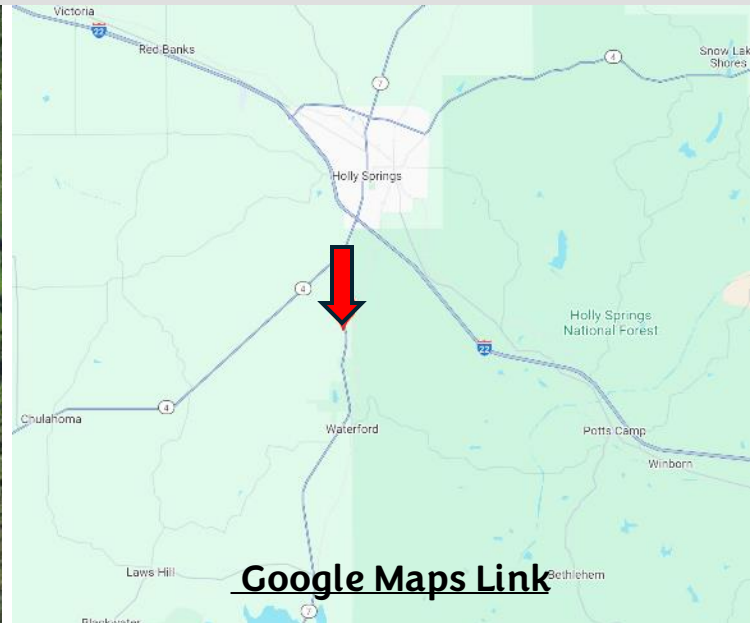
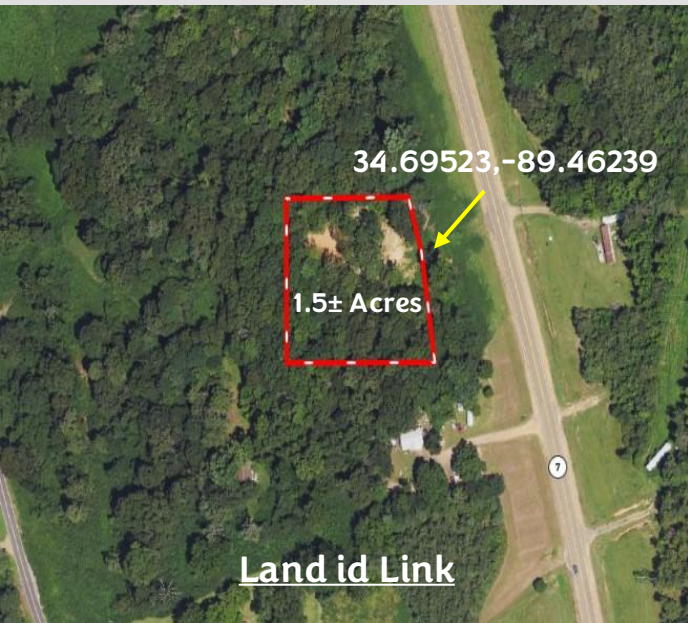
A Real Estate Expert You Can Trust

TomSmithLandandHomes.com

Information is believed to be accurate but not guaranteed.



MAPS



Directions from I-22 and Hwy 7S in Holly Springs, MS:
Take exit 30 for Hwy 7S/Hwy 4W. Travel south on Hwy 7 for 3.9 miles. The property will be on the right.



**KADERO
EDLEY**

REALTOR®

Office: 601.898.2772

Cell: 601.488.7000

Kadero@TomSmithLand.com



Expect More. Get More.

A Real Estate Expert You Can Trust

TomSmithLandandHomes.com

Information is believed to be accurate but not guaranteed.

