

326 N Ruby Ave, Ruleville, MS 38771



\$120,000

Welcome to your perfect family home in Sunflower County at 326 N Ruby Ave, Ruleville, MS! This charming property offers 1,878 square feet of living space, featuring three bedrooms plus a versatile office or nursery. It's designed for comfort and convenience with two full baths, a spacious living room with a cozy gas fireplace, and a large fenced-in backyard. Ideally located within walking distance of The Pharm restaurant, you'll enjoy top-notch food and drinks while soaking up southern hospitality. The home sits on a generous 0.50-acre lot, complete with a screened-in back patio and side porch, perfect for outdoor gatherings and grilling. Take your chance to own this delightful home. Contact Anthony Steen today for more information or to schedule a tour!



**ANTHONY
STEEN**

REALTOR®

Office: 662.441.2500

Cell: 662.645.5151

Anthony@TomSmithLand.com



Expect More. Get More.

A Real Estate Expert You Can Trust

TomSmithLandandHomes.com

Information is believed to be accurate but not guaranteed.





A Real Estate Expert
You Can Trust!

ANTHONY STEEN
REALTOR®
O: 662.441.2500 C: 662.645.5151
Anthony@TomSmithLand.com
TomSmithLandandHomes.com

Tom Smith
LAND AND
HOMES
Expect More. Get More.



Information is believed to be accurate but not guaranteed.



A Real Estate Expert *You Can Trust!*

ANTHONY STEEN
REALTOR®

O: 662.441.2500 C: 662.645.5151

Anthony@TomSmithLand.com

TomSmithLandandHomes.com



Expect More. Get More.



Information is believed to be accurate but not guaranteed.



A Real Estate Expert *You Can Trust!*

ANTHONY STEEN
REALTOR®

O: 662.441.2500 C: 662.645.5151

Anthony@TomSmithLand.com

TomSmithLandandHomes.com

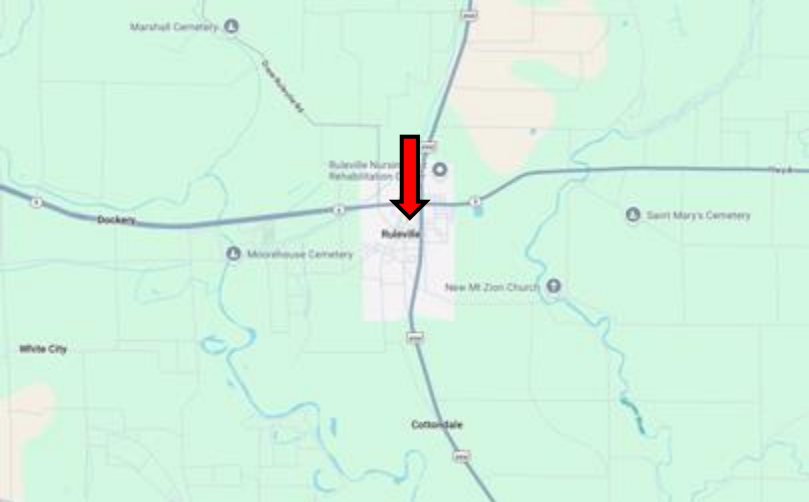
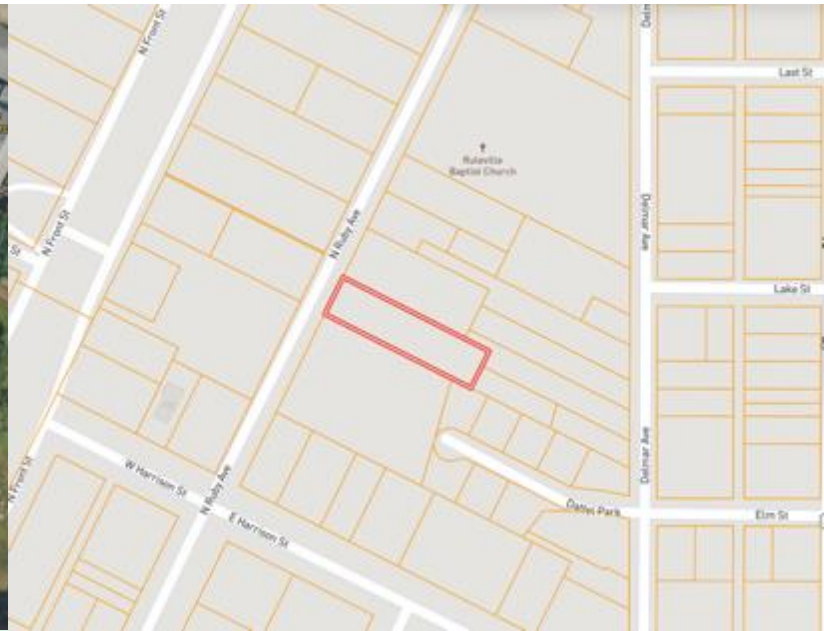


Expect More. Get More.



Information is believed to be accurate but not guaranteed.

MAPS | [Click for Interactive Map](#)



Address: 326 N Ruby Ave,
Rubyville, MS 38771

**Directions from MS-8 & US-49W,
Rubyville, MS:** Travel west on Hwy
8 for 0.1 miles. Turn left onto N
Ruby Ave. After 0.2 miles, the
house will be on the left.

[Google Map Link](#)



**ANTHONY
STEEN**

REALTOR®

Office: 662.441.2500

Cell: 662.645.5151

Anthony@TomSmithLand.com



Expect More. Get More.

A Real Estate Expert You Can Trust

TomSmithLandandHomes.com

Information is believed to be accurate but not guaranteed.

