



**\$139,000**

Move-In Ready Home

802 Farmer Street, Cleveland, MS 38732

This charming, updated three-bedroom, two-bathroom home Bolivar County home is move-in ready! Recent upgrades include fresh interior and exterior paint, new flooring, and windows. Offering 1,708+/- SF of living space, the layout features a cozy sitting room and foyer upon entry. Two bedrooms and a bathroom are to the left, while the primary suite is privately located on the other side of the living room and kitchen. The backyard, complete with a chain-link fence, is perfect for pets. To see this updated home for yourself, call Abby to schedule your private showing!



**ABBY**  
**ABERNATHY**  
REALTOR®

Office: 662.441.2500

Cell: 940.781.3137

Abby@TomSmithLand.com



Expect More. Get More.

**A Real Estate Expert You Can Trust**

TomSmithLandandHomes.com

Information is believed to be accurate but not guaranteed.







3 Bedrooms  
2 Bathrooms  
1,708+/- SF  
Updated Flooring  
New Exterior & Interior Paint  
Chain Link Fence



**A Real Estate Expert**  
*You Can Trust!*

**ABBY ABERNATHY**  
REALTOR®

O: 662.441.2500 C: 940.781.3137

Abby@TomSmithLand.com

TomSmithLandandHomes.com

**Tom Smith**  
**LAND AND HOMES**

Expect More. Get More.

2011-2024  
**BEST**  
BROKERAGES

Information is believed to be accurate but not guaranteed.





**A Real Estate Expert  
You Can Trust!**

**ABBY ABERNATHY**  
REALTOR®

O: 662.441.2500 C: 940.781.3137

Abby@TomSmithLand.com

TomSmithLandandHomes.com

**Tom  
Smith  
LAND AND  
HOMES**

Expect More. Get More.

Line Report  
2011-2024  
**BEST**  
BROKERAGES

Information is believed to be accurate but not guaranteed.





**A Real Estate Expert**  
*You Can Trust!*

**ABBY ABERNATHY**  
REALTOR®

O: 662.441.2500 C: 940.781.3137

Abby@TomSmithLand.com

TomSmithLandandHomes.com



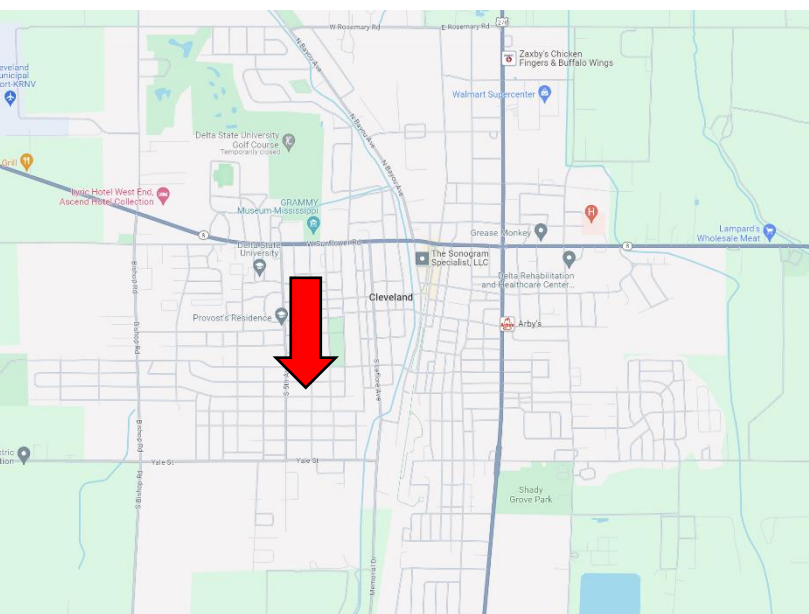
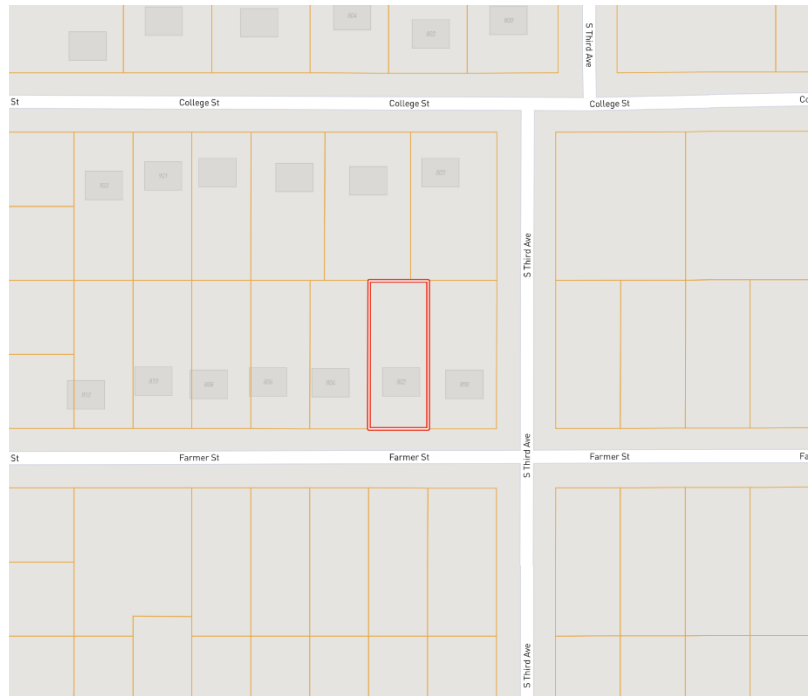
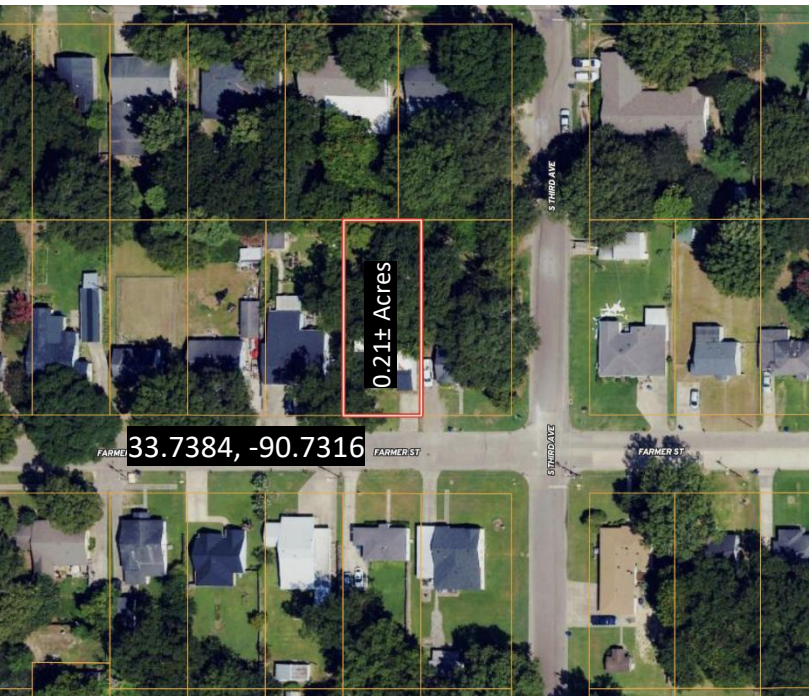
Expect More. Get More.



Information is believed to be accurate but not guaranteed.



# MAPS | [Click for Interactive Map](#)



**Address: 802 Farmer Street,  
Cleveland, MS 338732**

**Directions from Hwy 8 & Hwy 61 in  
Cleveland, MS:** Travel west on Hwy 8 for one  
mile. Turn left onto N. Fifth Avenue and travel  
0.6 miles. Turn left onto Farmer Street. After 0.1  
mile, the home will be on the left. [Click for  
Google Maps.](#)



**ABBY  
ABERNATHY**  
REALTOR®

Office: 662.441.2500  
Cell: 940.781.3137  
[Abby@TomSmithLand.com](mailto:Abby@TomSmithLand.com)



Expect More. Get More.

**A Real Estate Expert You Can Trust**

[TomSmithLandandHomes.com](http://TomSmithLandandHomes.com)

Information is believed to be accurate but not guaranteed.

