

Waterfront Living on Bee Lake in Holmes County, MS



232 Bungalow Lane Tchula, MS 39169

\$175,000

Discover your peaceful lakefront retreat with this charming 2-bedroom, 1-bath home on a 2.73± acre lot in a gated Bee Lake community of Holmes County, MS. A spacious loft serves as additional sleeping or relaxation space, making this property ideal for weekend getaways or year-round living. Enjoy approximately 135 feet of waterfront, featuring a pier that offers stunning views and direct access to the lake. Several potential spots along the waterfront are perfect for your private boat ramp. This exclusive gated community consists of only ten lots, with this home situated at the very end, providing added privacy. Take advantage of this rare opportunity to own a waterfront home in a tranquil setting on Bee Lake. Call Leland today to schedule your tour!



**LELAND
SELBY**

REALTOR®

Office: 662.268.6333

Cell: 662.394.9876

Leland@TomSmithLand.com



Expect More. Get More.

A Real Estate Expert You Can Trust

TomSmithLandandHomes.com

Information is believed to be accurate but not guaranteed.





*A Real Estate Expert
You Can Trust!*

LELAND SELBY
REALTOR®

O: 662.268.6333 C: 662.394.9876
Leland@TomSmithLand.com
TomSmithLandandHomes.com



Expect More. Get More.





A Real Estate Expert
You Can Trust!

LELAND SELBY

REALTOR®

O: 662.268.6333 C: 662.394.9876

Leland@TomSmithLand.com

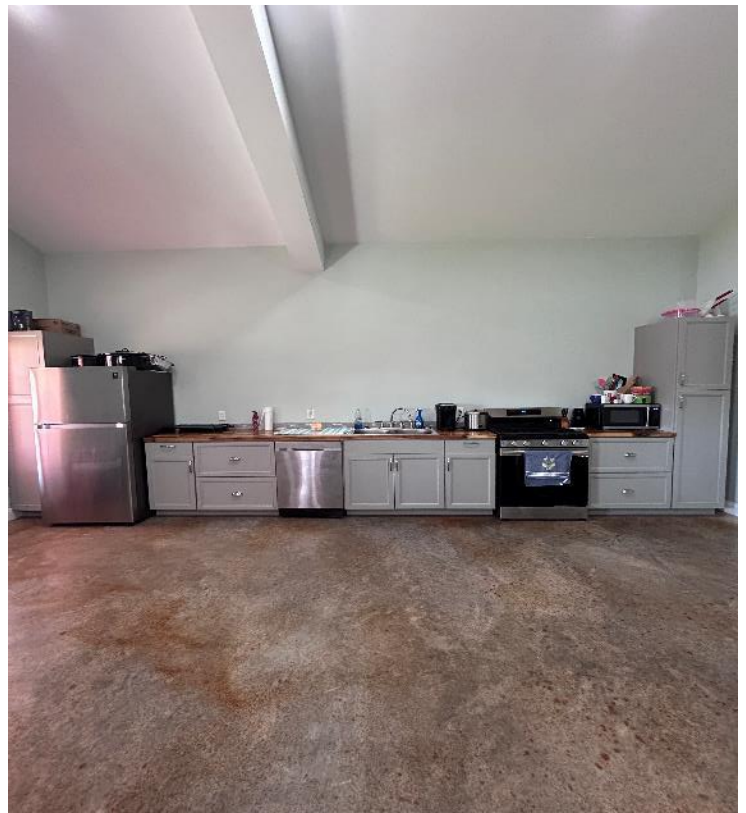
TomSmithLandandHomes.com



Expect More. Get More.



Information is believed to be accurate but not guaranteed.



**A Real Estate Expert
You Can Trust!**



LELAND SELBY
REALTOR®

O: 662.268.6333 C: 662.394.9876

Leland@TomSmithLand.com

TomSmithLandandHomes.com

Expect More. Get More.



Information is believed to be accurate but not guaranteed.

AERIAL MAP



[CLICK HERE FOR AN INTERACTIVE MAP](#)

A Real Estate Expert
You Can Trust!

LELAND SELBY
REALTOR®

O: 662.268.6333 C: 662.394.9876

Leland@TomSmithLand.com

TomSmithLandandHomes.com



Expect More. Get More.



Information is believed to be accurate but not guaranteed.

OWNERSHIP MAP



A Real Estate Expert
You Can Trust!

LELAND SELBY
REALTOR®

O: 662.268.6333 C: 662.394.9876

Leland@TomSmithLand.com

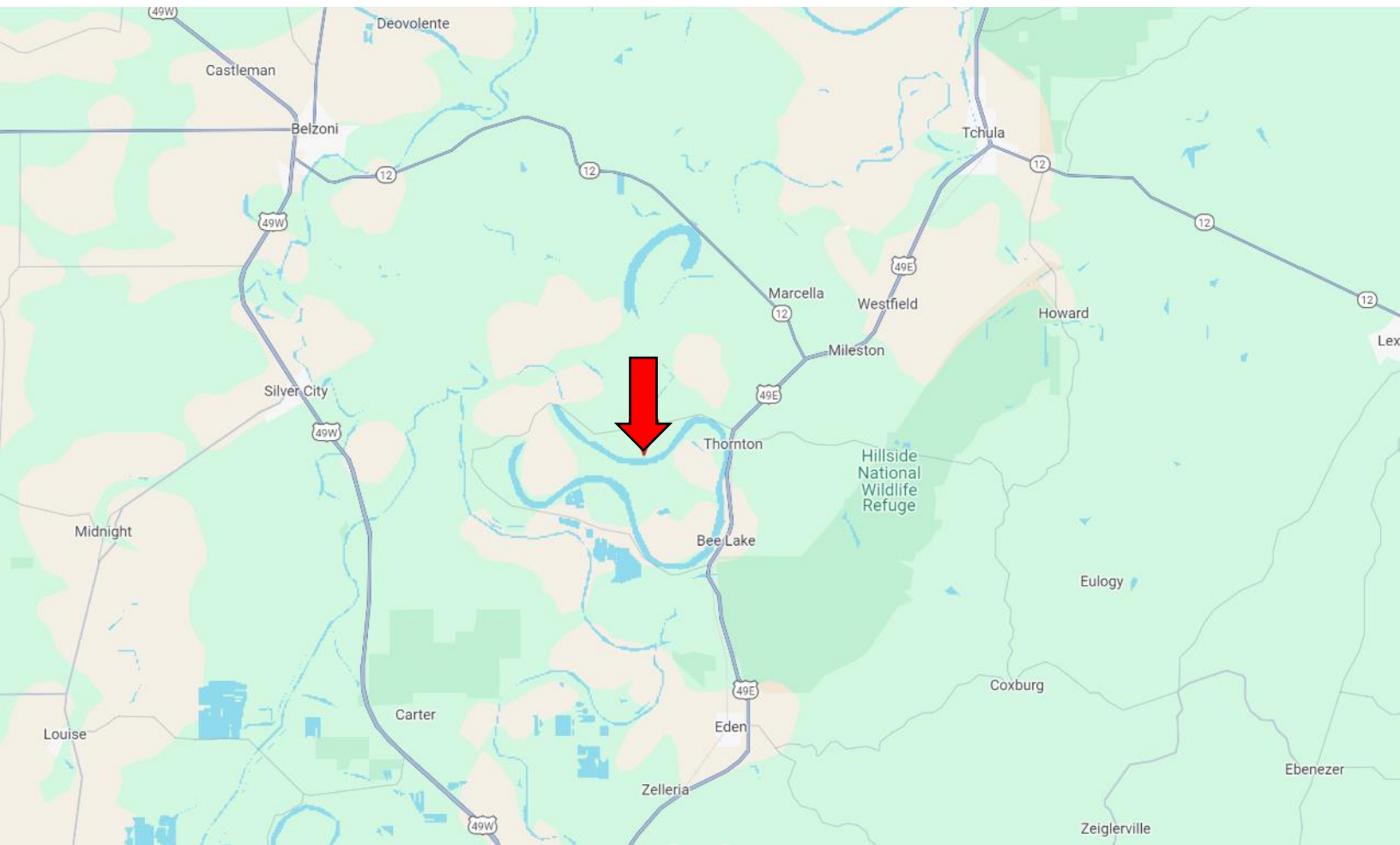
TomSmithLandandHomes.com



Expect More. Get More.



DIRECTIONAL MAP



Address: 232 Bungalow Lane Tchula, Mississippi 39169

Directions from Hwy 49E and Hwy 12 in Tchula, MS: Travel southwest on Hwy 49E for 10.4 miles. Turn right onto Bee Lake Rd., and travel 2.5 miles. Turn left onto Bungalow Lane. After 0.8 miles, the property will be on your right. [GOOGLE MAP LINK](#)



**LELAND
SELBY**

REALTOR®

Office: 662.268.6333

Cell: 662.394.9876

Leland@TomSmithLand.com



Expect More. Get More.

A Real Estate Expert You Can Trust

TomSmithLandandHomes.com

Information is believed to be accurate but not guaranteed.

