

7 Unit Apartment Complex | \$385,000

43 Smith Road, Cleveland, MS 38732



This 7 unit apartment complex consists of a four-plex and three individual houses, each offering a one-bedroom, one-bathroom unit. The estimated annual income could exceed \$58,000 with full occupancy. Yearly property taxes are \$3,878, and insurance costs \$1,800. The complex sits on 0.77± acres in Bolivar County, MS, and recently installed a new septic system. Its smaller, more private units appeal to tenants seeking a secluded living space. One-bedroom units are rare, yet highly desirable. For more details about this investment opportunity, call Tracey Bell today!

**TRACEY
BELL**

MANAGING BROKER

Office: 662.441.2500

Cell: 662.719.4720

Tracey@TomSmithLand.com



Expect More. Get More.

A Real Estate Expert You Can Trust

TomSmithLandandHomes.com

Information is believed to be accurate but not guaranteed.





*A Real Estate Expert
You Can Trust!*

TRACEY BELL

MANAGING BROKER

O: 662.441.2500 C: 662.719.4720

Tracey@TomSmithLand.com

TomSmithLandandHomes.com



Expect More. Get More.



Information is believed to be accurate but not guaranteed.



A Real Estate Expert *You Can Trust!*

TRACEY BELL

MANAGING BROKER

O: 662.441.2500 C: 662.719.4720

Tracey@TomSmithLand.com

TomSmithLandandHomes.com



Expect More. Get More.



Information is believed to be accurate but not guaranteed.



**A Real Estate Expert
You Can Trust!**

TRACEY BELL
MANAGING BROKER
O: 662.441.2500 C: 662.719.4720
Tracey@TomSmithLand.com
TomSmithLandandHomes.com

**Tom
Smith
LAND AND
HOMES**
Expect More. Get More.

LandReport
2011-2024
BEST
BROKERAGES

Information is believed to be accurate but not guaranteed.



A Real Estate Expert
You Can Trust!

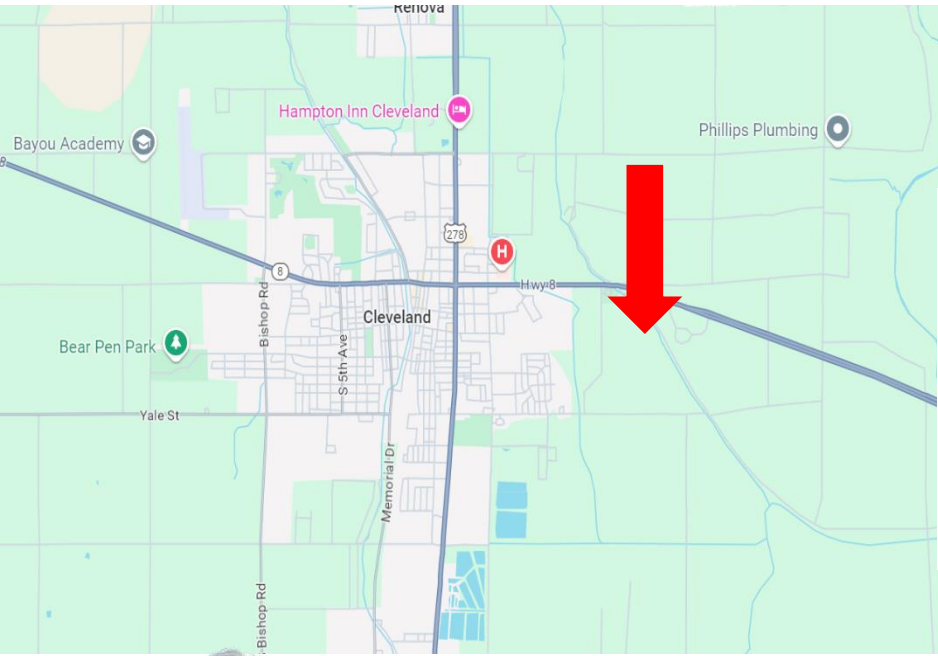
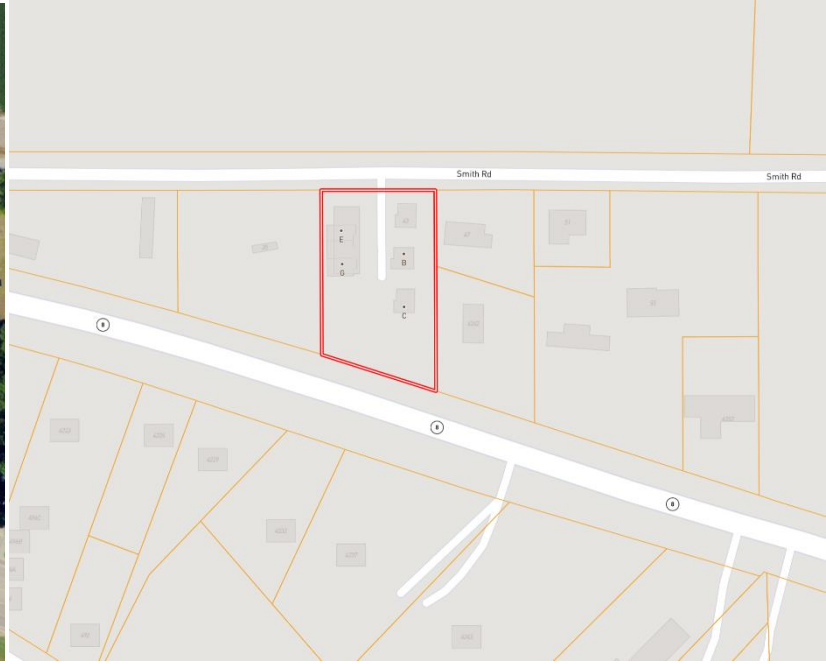
TRACEY BELL
MANAGING BROKER
O: 662.441.2500 C: 662.719.4720
Tracey@TomSmithLand.com
TomSmithLandandHomes.com



Expect More. Get More.



Information is believed to be accurate but not guaranteed.



Directions From the Intersection of HWY 8 & HWY 61 in Cleveland:
Travel east on HWY 8 for 1.4 miles. Turn left onto Smith Road. After 0.2 miles, the property will be on the right.
[Google Maps Link](#)



TRACEY BELL
MANAGING BROKER
Office: 662.441.2500
Cell: 662.719.4720
Tracey@TomSmithLand.com



A Real Estate Expert You Can Trust
TomSmithLandandHomes.com

