

COUNTRY HOME SITE

31± ACRES IN WINSTON COUNTY, MISSISSIPPI



\$89,000

Look at this beautiful wooded country home site, ideally located just 10 minutes northeast of Louisville and 30 minutes south of Starkville, Mississippi. This 31± acre Winston County property features a well-managed timber stand that has already undergone its first thinning, ensuring a healthy and sustainable environment. With paved road frontage and utilities readily available, the property offers versatility for various uses—whether you envision it as a weekend getaway for Bulldog fans, a hunting retreat, or a permanent residence. Call Michael Halfacre today!



**MICHAEL
HALFACRE**

MANAGING BROKER

Office: 662.268.6333

Cell: 662.242.4220

MHalfacre@TomSmithLand.com



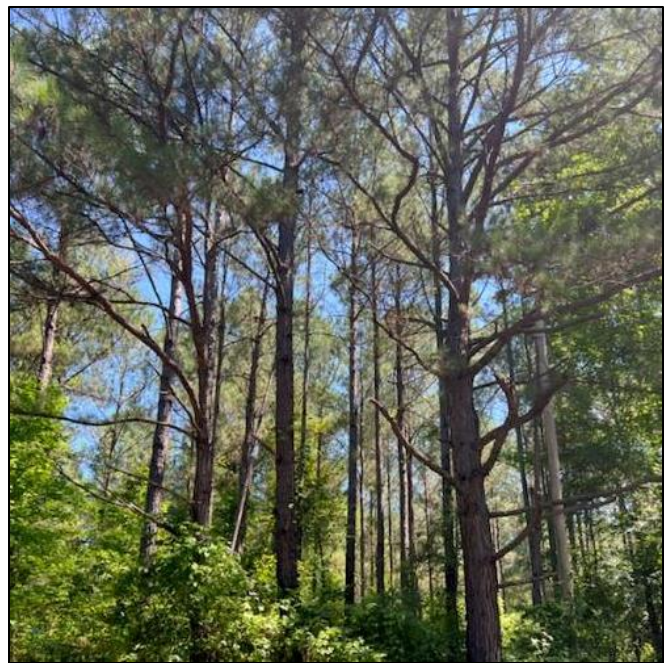
Expect More. Get More.

A Real Estate Expert You Can Trust

TomSmithLandandHomes.com

Information is believed to be accurate but not guaranteed.





A Real Estate Expert *You Can Trust!*

MICHAEL HALFACRE

MANAGING BROKER

O: 662.268.6333 C: 662.242.4220

MHalfacre@TomSmithLand.com

TomSmithLandandHomes.com



Expect More. Get More.



Information is believed to be accurate but not guaranteed.

AERIAL MAP



INTERACTIVE MAP LINK

A Real Estate Expert
You Can Trust!

MICHAEL HALFACRE

MANAGING BROKER

O: 662.268.6333 C: 662.242.4220

MHalfacre@TomSmithLand.com

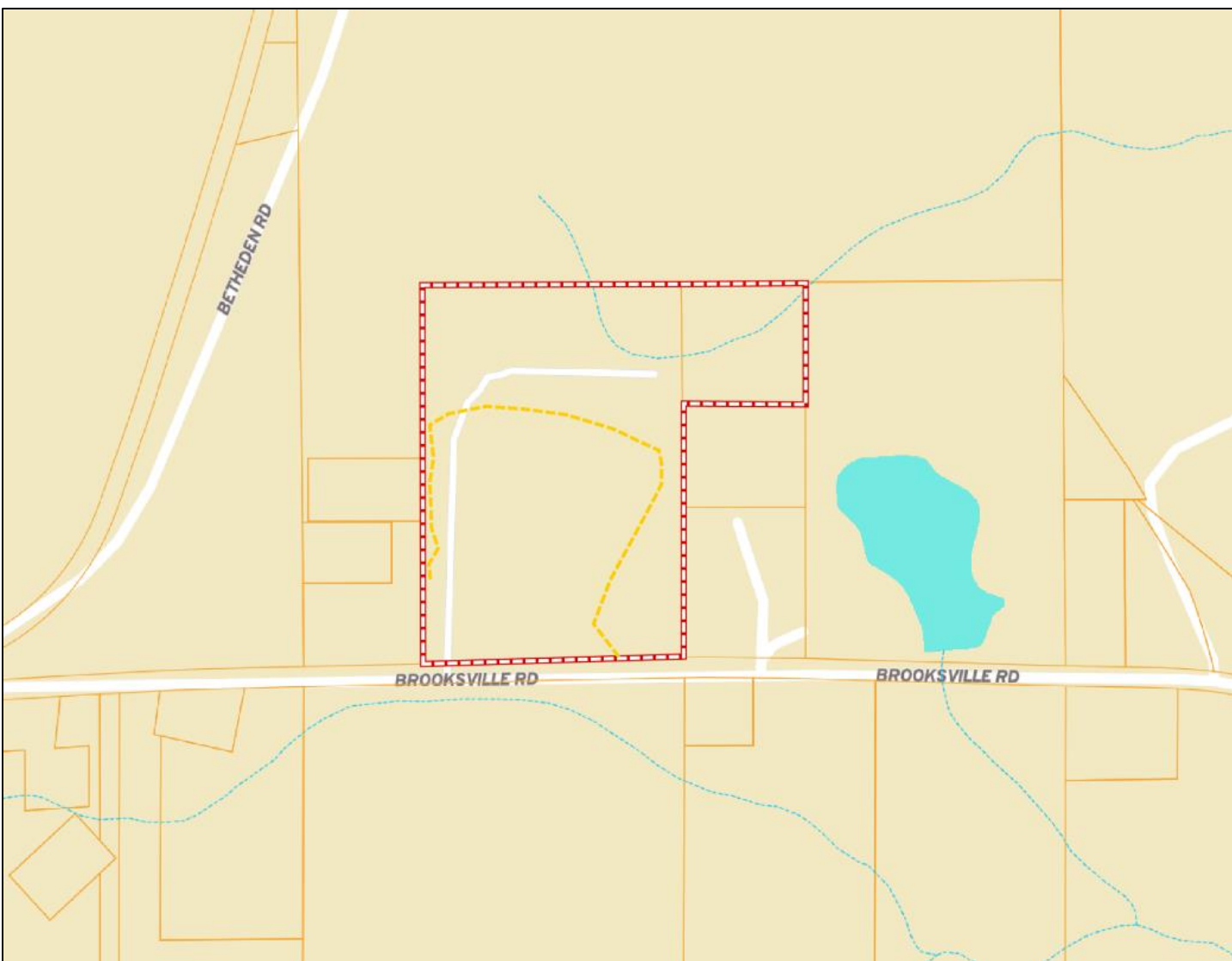
TomSmithLandandHomes.com



Expect More. Get More.



OWNERSHIP MAP



A Real Estate Expert
You Can Trust!

MICHAEL HALFACRE

MANAGING BROKER

O: 662.268.6333 C: 662.242.4220

MHalfacre@TomSmithLand.com

TomSmithLandandHomes.com



Expect More. Get More.



Information is believed to be accurate but not guaranteed.

TOPOGRAPHY MAP



A Real Estate Expert
You Can Trust!

MICHAEL HALFACRE

MANAGING BROKER

O: 662.268.6333 C: 662.242.4220

MHalfacre@TomSmithLand.com

TomSmithLandandHomes.com



Expect More. Get More.



INFRARED MAP



A Real Estate Expert
You Can Trust!

MICHAEL HALFACRE

MANAGING BROKER

O: 662.268.6333 C: 662.242.4220

MHalfacre@TomSmithLand.com

TomSmithLandandHomes.com

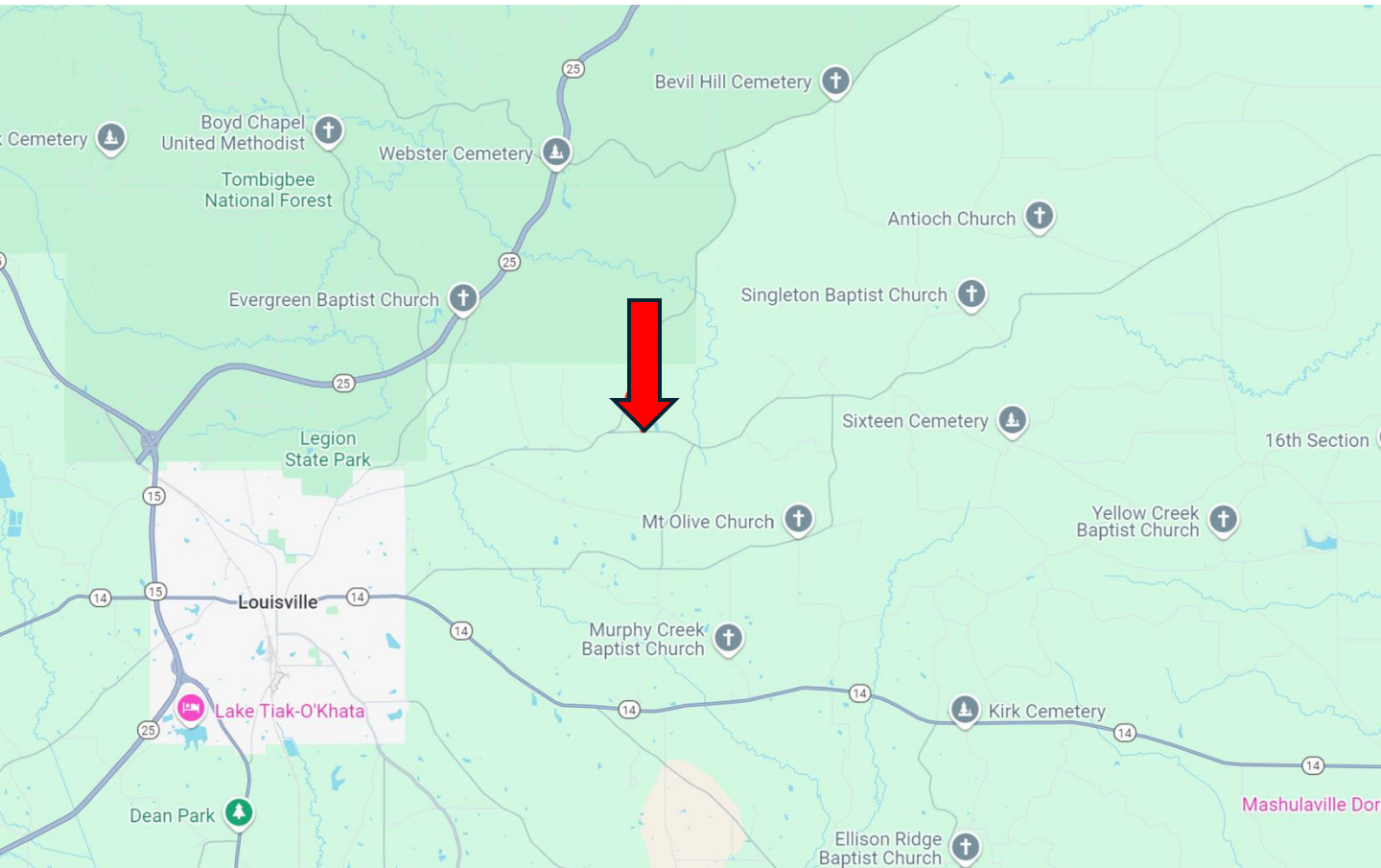


Expect More. Get More.



Information is believed to be accurate but not guaranteed.

DIRECTIONAL MAP



Directions from the intersection of Hwy 15 and Hwy 14 in Louisville, MS: Travel Hwy 14/W Main St. for 1.9 miles. Turn left onto N Columbus Ave. and travel 1.6 miles. Turn right onto Brooksville Rd. and travel 4.3 miles. Make a slight right to stay on Brooksville Road and travel 0.5 miles. The property will be on the left marked with a sign. [GOOGLE MAP LINK](#)

**A Real Estate Expert
You Can Trust!**

MICHAEL HALFACRE

MANAGING BROKER

O: 662.268.6333 C: 662.242.4220

MHalfacre@TomSmithLand.com

TomSmithLandandHomes.com



Expect More. Get More.

