

RECREATIONAL HUNTING TRACT

62+/- Acres Webster County, MS



\$111,600

This 62+/- acre tract in Webster County, MS, is ready for its next owner. Located on Alva Road in Eupora, MS, it offers over 1,500 feet of road frontage. With the recent timber harvest, this land presents a blank canvas for development. Multiple home sites are available throughout, and all utilities are accessible along Alva Road. A road runs through the center of the property, providing easy access to the back. This property is ideal for hunting, recreation, or building a home. Additional acreage is also available 15 minutes from Eupora and 40 minutes from Starkville. To schedule a private showing, call or text Walker Trnum today!



**WALKER
TRANUM**
REALTOR®

Office: 662.268.6333
Cell: 662.769.1442
Walker@TomSmithHomes.com



Expect More. Get More.

A Real Estate Expert You Can Trust

TomSmithLandandHomes.com

Information is believed to be accurate but not guaranteed.





**WALKER
TRANUM**
REALTOR®

Office: 662.268.6333

Cell: 662.769.1442

Walker@TomSmithHomes.com



Expect More. Get More.

A Real Estate Expert You Can Trust

TomSmithLandandHomes.com

Information is believed to be accurate but not guaranteed.





**WALKER
TRANUM**
REALTOR®

Office: 662.268.6333

Cell: 662.769.1442

Walker@TomSmithHomes.com



Expect More. Get More.

A Real Estate Expert You Can Trust

TomSmithLandandHomes.com

Information is believed to be accurate but not guaranteed.



Aerial Map



[Interactive Link](#)



**WALKER
TRANUM**
REALTOR®

Office: 662.268.6333

Cell: 662.769.1442

Walker@TomSmithHomes.com



Expect More. Get More.

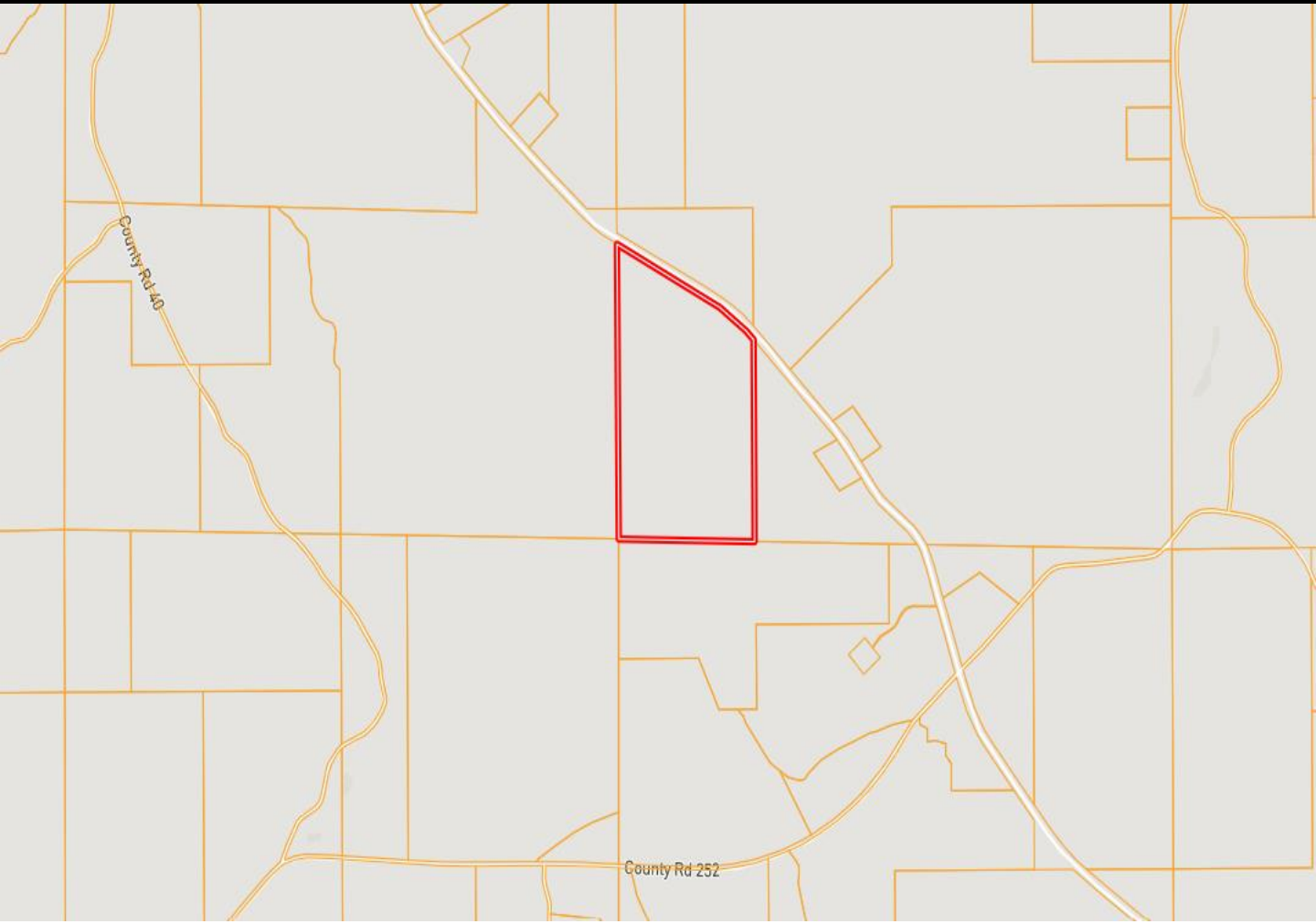
A Real Estate Expert You Can Trust

TomSmithLandandHomes.com

Information is believed to be accurate but not guaranteed.



Ownership Map



**WALKER
TRANUM**
REALTOR®

Office: 662.268.6333

Cell: 662.769.1442

Walker@TomSmithHomes.com



Expect More. Get More.

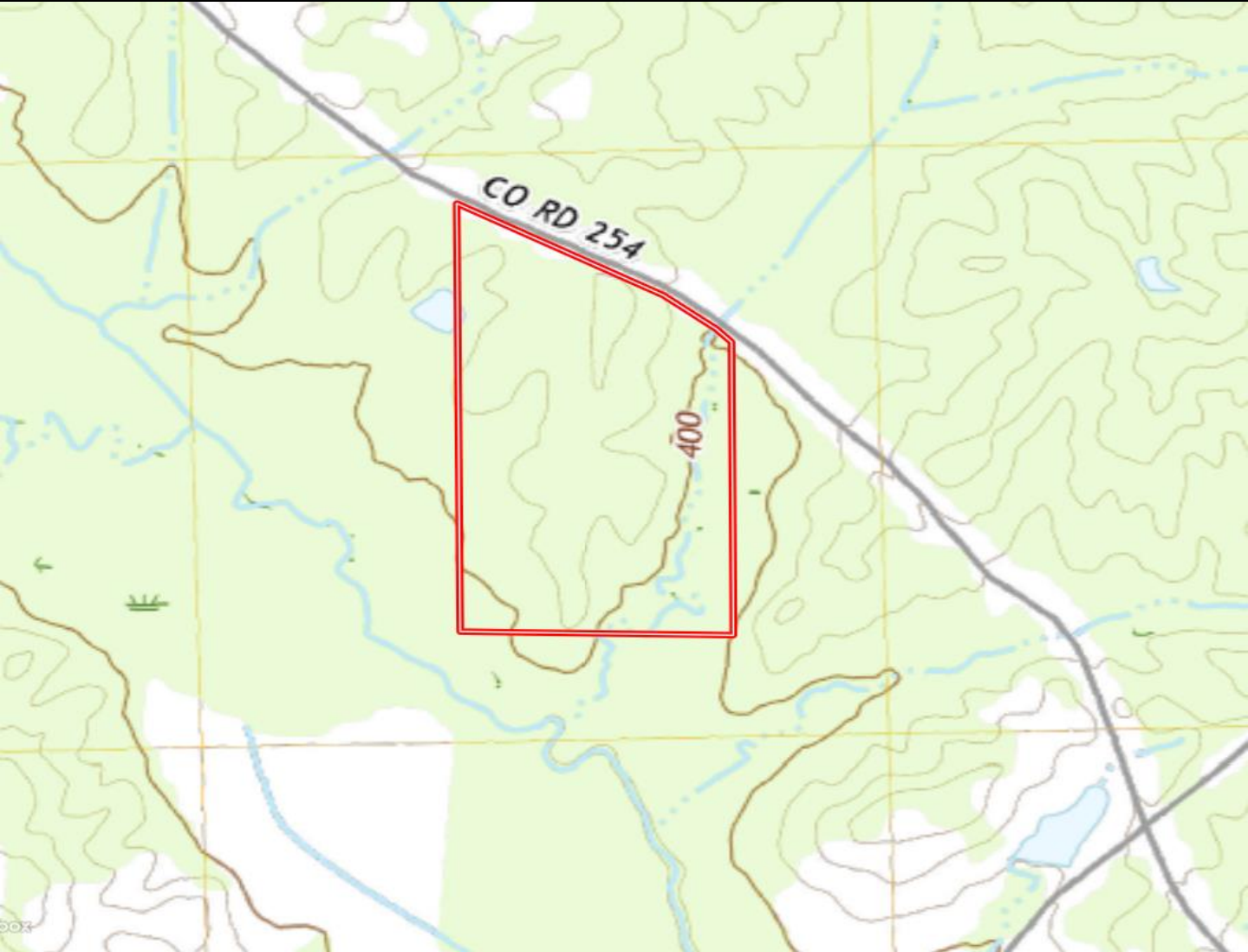
A Real Estate Expert You Can Trust

TomSmithLandandHomes.com

Information is believed to be accurate but not guaranteed.



Topo Map



**WALKER
TRANUM**
REALTOR®

Office: 662.268.6333

Cell: 662.769.1442

Walker@TomSmithHomes.com



Expect More. Get More.

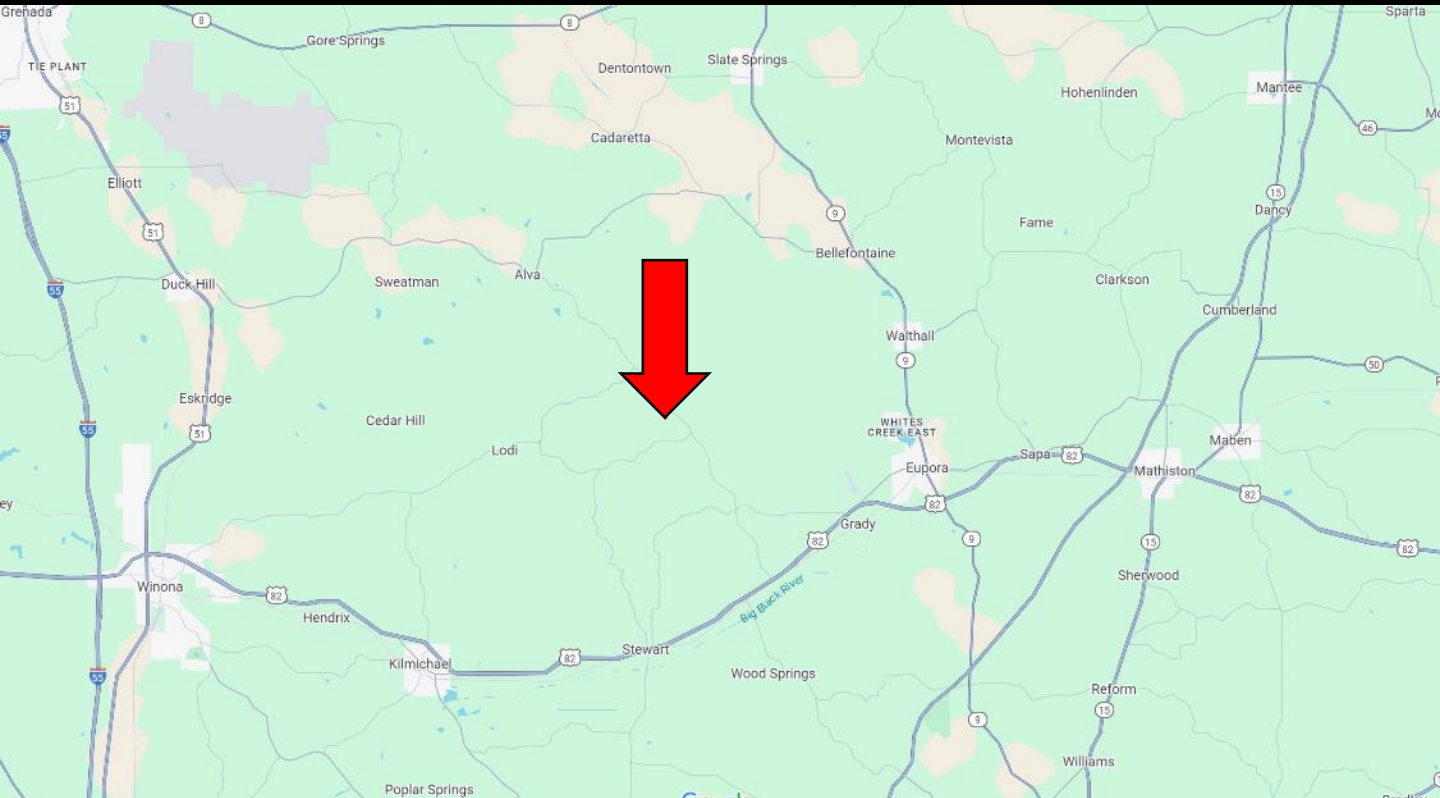
A Real Estate Expert You Can Trust

TomSmithLandandHomes.com

Information is believed to be accurate but not guaranteed.



Directional Map



Directions from the Intersection of Hwy 9 and Hwy 82 in Eupora, MS: Travel Hwy 82 W for 3.6 miles. Make a slight right to merge onto Grady Road and travel 4 miles. Turn right onto Greensboro Road and travel 3.3 miles. Continue onto Alva Road. After 0.6 miles, the property will be on your left.
[GOOGLE MAP LINK](#)



**WALKER
TRANUM**
REALTOR®

Office: 662.268.6333
Cell: 662.769.1442
Walker@TomSmithHomes.com



Expect More. Get More.

A Real Estate Expert You Can Trust

TomSmithLandandHomes.com

Information is believed to be accurate but not guaranteed.

