

RECREATIONAL PASTURELAND

69± Acres Lincoln County, MS



2120 Gene Road SW Brookhaven, MS 39601

\$320,000

If you're searching for prime land in one of the most desirable school districts in Lincoln County, Mississippi, this property is a must-see. Situated in the sought-after West Lincoln School District, this 69+/- acre tract of pastureland is perfect for those seeking space, versatility, and rural charm. The land is fully fenced and cross-fenced with five strands of new barbed wire and sturdy tee posts, with a stunning wooden fence enhancing the road-facing side. The property features a tranquil pond, ideal for watering livestock or enjoying some peaceful fishing. Convenience is at your fingertips with power and a meter base already installed both at the main gate and at the back of the property. For those interested in outdoor recreation, the rear portion of the property is densely wooded, providing excellent hunting opportunities with a food plot and box blind already set up. Whether you're looking to raise livestock or build your dream home in a beautiful setting, this land offers the perfect blend of functionality and location. Don't miss the chance to own this outstanding piece of property! Call Clif today!



CLIF
CANNON
REALTOR®

Office: 601.990.5070

Cell: 601.565.1070

Clif@TomSmithLand.com



A Real Estate Expert You Can Trust

TomSmithLandandHomes.com

Information is believed to be accurate but not guaranteed.





CLIF CANNON

REALTOR®

Office: 601.990.5070

Cell: 601.565.1070

Clif@TomSmithLand.com



A Real Estate Expert You Can Trust

TomSmithLandandHomes.com

Information is believed to be accurate but not guaranteed.





CLIF CANNON
 REALTOR®
 Office: 601.990.5070
 Cell: 601.565.1070
 Clif@TomSmithLand.com



A Real Estate Expert You Can Trust
 TomSmithLandandHomes.com

Information is believed to be accurate but not guaranteed.



Aerial Map



CLIF CANNON

REALTOR®

Office: 601.990.5070

Cell: 601.565.1070

Clif@TomSmithLand.com



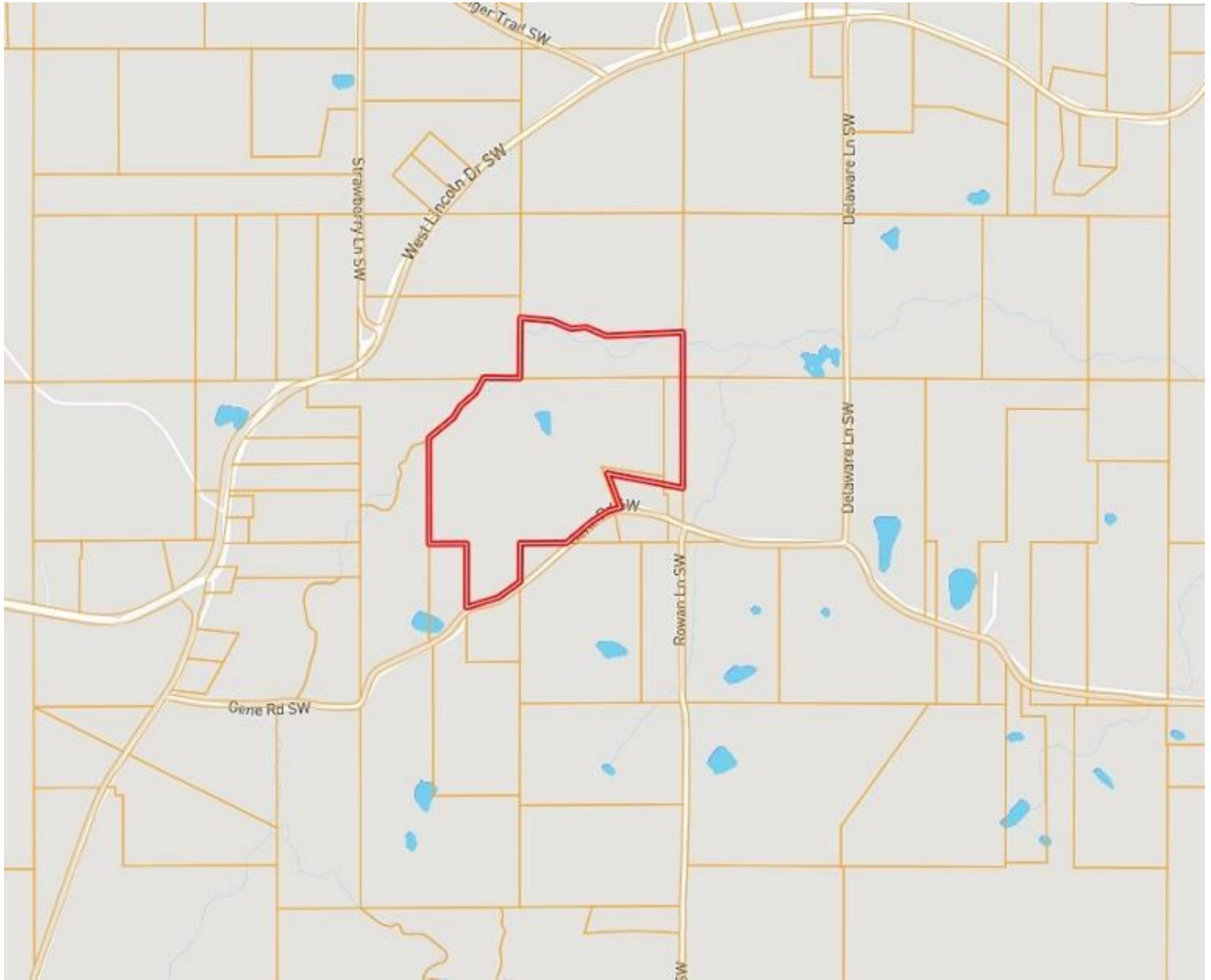
A Real Estate Expert You Can Trust

TomSmithLandandHomes.com

Information is believed to be accurate but not guaranteed.



Ownership Map



CLIF CANNON

REALTOR®

Office: 601.990.5070

Cell: 601.565.1070

Clif@TomSmithLand.com



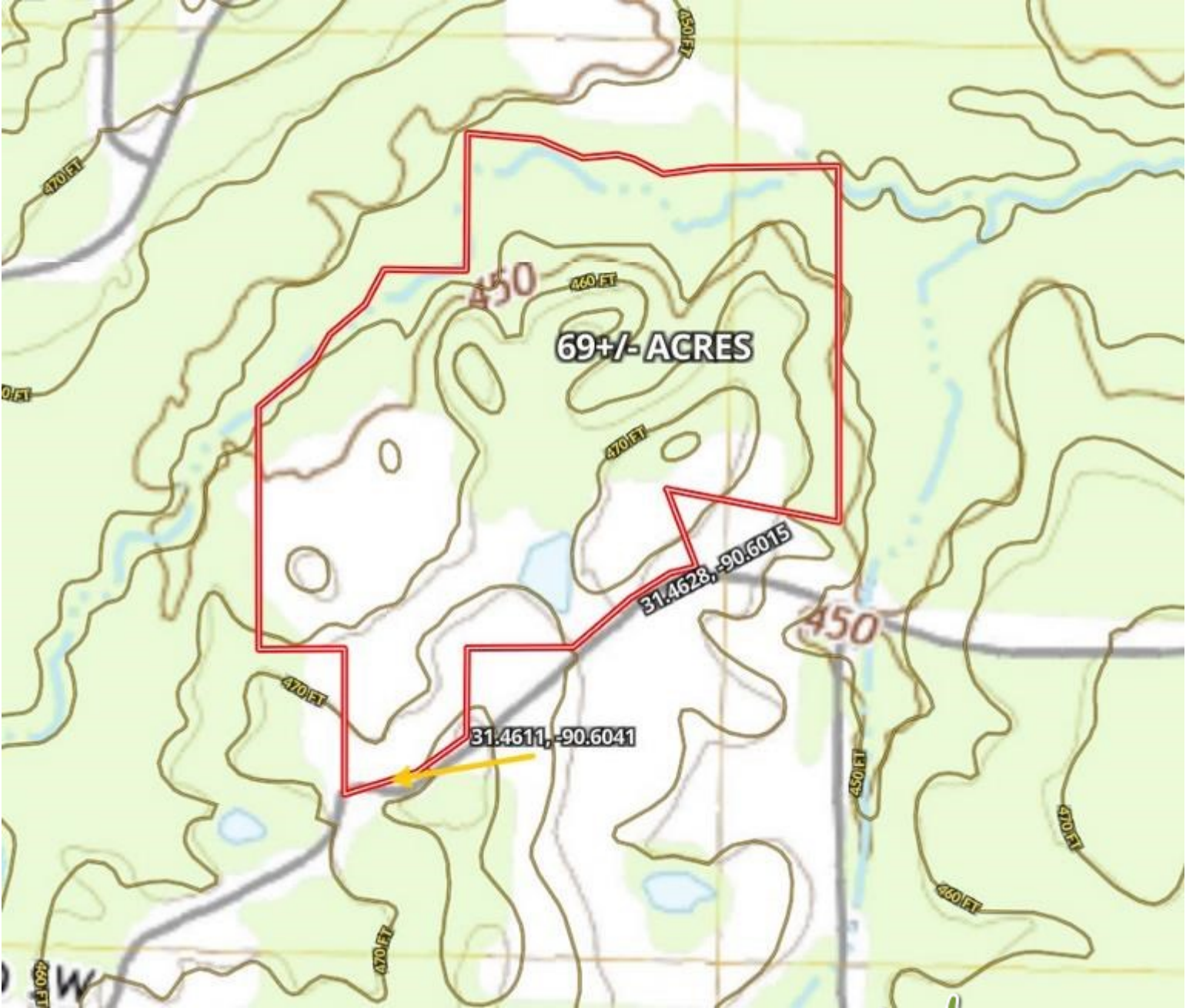
A Real Estate Expert You Can Trust

TomSmithLandandHomes.com

Information is believed to be accurate but not guaranteed.



Topographic Map



CLIF CANNON

REALTOR®

Office: 601.990.5070

Cell: 601.565.1070

Clif@TomSmithLand.com



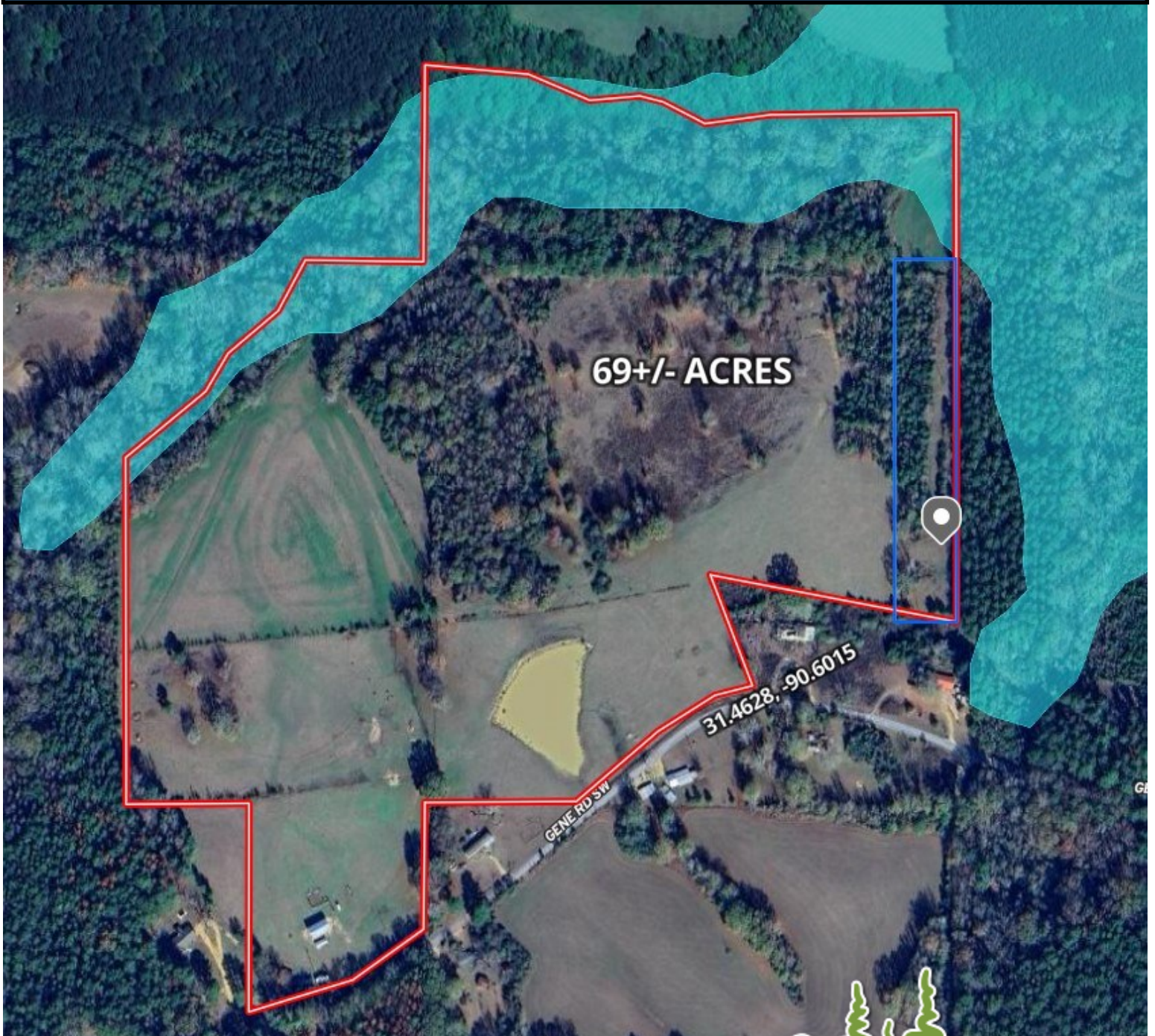
A Real Estate Expert You Can Trust

TomSmithLandandHomes.com

Information is believed to be accurate but not guaranteed.



Flood Map



CLIF CANNON

REALTOR®

Office: 601.990.5070

Cell: 601.565.1070

Clif@TomSmithLand.com



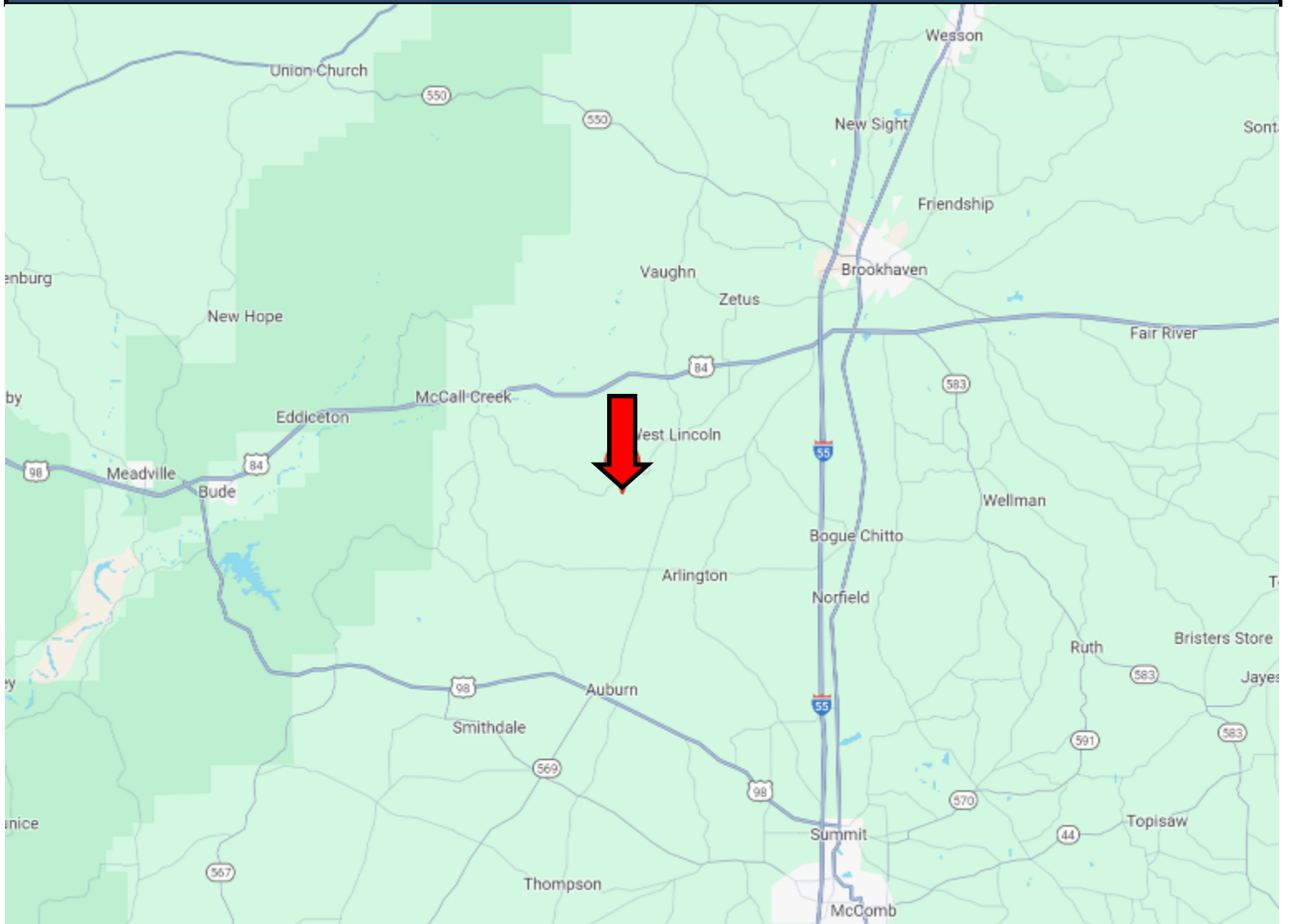
A Real Estate Expert You Can Trust

TomSmithLandandHomes.com

Information is believed to be accurate but not guaranteed.



Directional Map



Directions from the intersection of I-55 and US 84 in Brookhaven, MS: Take exit 38 to merge onto US-84 and travel 2.4 miles. Turn left onto West Lincoln Drive SW and travel for 8.1 miles. Turn left to stay on West Lincoln Drive and travel for .2 miles. Turn left onto Gene Rd SW and travel for .8 miles. The property will be on the left.
2120 Gene Road SW Brookhaven, MS 39601—Click for Google Map Link



**CLIF
CANNON**
REALTOR®

Office: 601.990.5070
Cell: 601.565.1070
Clif@TomSmithLand.com



A Real Estate Expert You Can Trust

TomSmithLandandHomes.com

Information is believed to be accurate but not guaranteed.

