

Charming Corner Lot Home in Bolivar County

500 Canal Ave Cleveland, MS 38732 | \$208,000



This beautifully renovated 3-bedroom, 2-bathroom brick home at the corner of Canal and College Street in Bolivar County, MS, offers comfort and charm. Highlights include a fenced-in backyard and a covered back patio, perfect for outdoor relaxation. The spacious corner lot adds extra privacy and curb appeal.

Enjoy the convenience of a bonus living room and an upstairs loft that makes an ideal office or children's game room. Recent updates include a 1-year-old architectural roof, a 3-year-old HVAC system, and a water heater, ensuring peace of mind for years.



**ANTHONY
STEEN**

REALTOR®

Office: 662.441.2500

Cell: 662.645.5151

Anthony@TomSmithLand.com



Expect More. Get More.

A Real Estate Expert You Can Trust

TomSmithLandandHomes.com

Information is believed to be accurate but not guaranteed.





A Real Estate Expert
You Can Trust!

ANTHONY STEEN
REALTOR®
O: 662.441.2500 C: 662.645.5151
Anthony@TomSmithLand.com
TomSmithLandandHomes.com

Tom Smith
LAND AND
HOMES
Expect More. Get More.



Information is believed to be accurate but not guaranteed.



A Real Estate Expert
You Can Trust!

ANTHONY STEEN
REALTOR®
O: 662.441.2500 C: 662.645.5151
Anthony@TomSmithLand.com
TomSmithLandandHomes.com

Tom Smith
LAND AND
HOMES
Expect More. Get More.



Information is believed to be accurate but not guaranteed.



A Real Estate Expert
You Can Trust!

ANTHONY STEEN
REALTOR®

O: 662.441.2500 C: 662.645.5151

Anthony@TomSmithLand.com

TomSmithLandandHomes.com



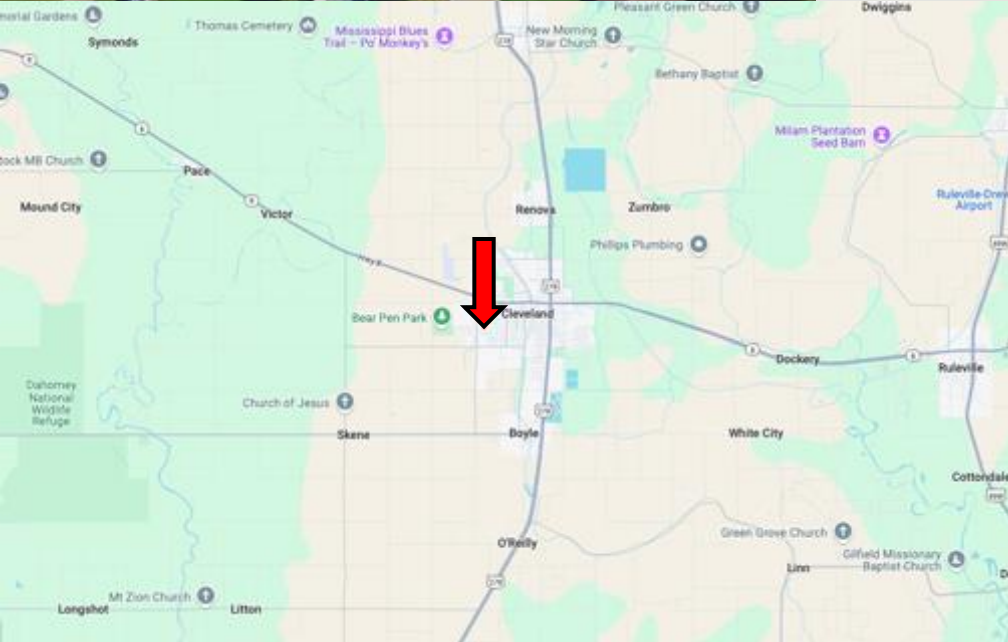
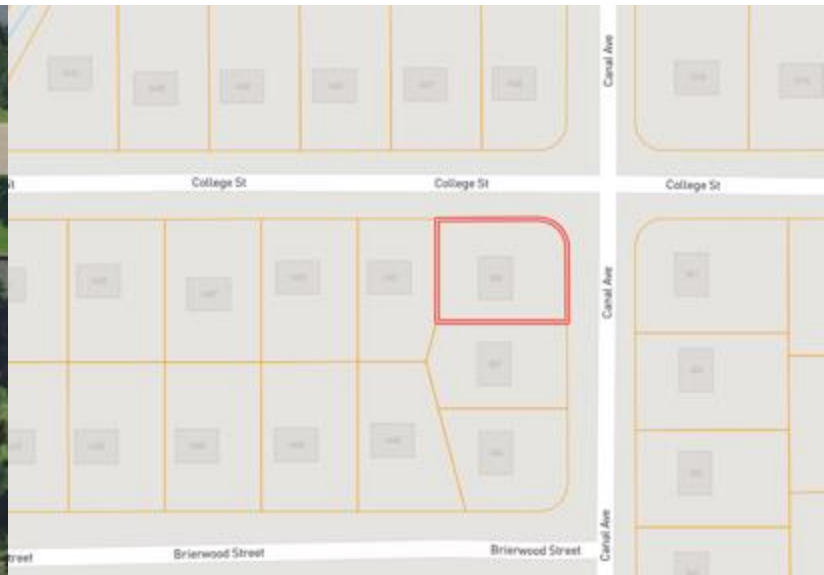
Expect More. Get More.



Information is believed to be accurate but not guaranteed.

MAPS

[Click for the Interactive Map](#)



Address: 500 Canal Ave,
Cleveland, MS 38732

Directions from US-61 & MS-8, Cleveland, MS:

Travel west on MS-8 W for 1.3 miles. Turn left onto W Sunflower Rd. and travel 0.2 miles. Turn left onto Canal Ave. After 0.6 miles, the house will be on the right.

[Google Map Link](#)



**ANTHONY
STEEN**

REALTOR®

Office: 662.441.2500

Cell: 662.645.5151

Anthony@TomSmithLand.com



Expect More. Get More.

A Real Estate Expert You Can Trust

TomSmithLandandHomes.com

Information is believed to be accurate but not guaranteed.

