

RECREATIONAL TRACT

75.29± Acres in Jones County, MS



\$165,650



This 75.29± acre property in Jones County, MS, is located just minutes south of Laurel on Hwy 15 and offers a great mix of hunting, timber production, and recreation. It features a natural pine regeneration timber stand, a shared pond, and interior roads perfect for riding horses or RVs. With approximately 1,000 feet of frontage along Hwy 15 and access via a written easement from Whispering Sage Drive, the property is equipped with available electricity and gas and is near the local water association service area. Contact Tom Wiseman or Tyler Kilgore today!

Directions from I-59 and Hwy 15 South in Laurel, MS: Take exit 96B for Hwy 15S. Travel south on Hwy 15 for 5.6 miles. Turn right onto Whispering Sage Drive. Follow the easement road 0.40 miles to the property entrance. [Google Maps Link](#)



TYLER KILGORE
REALTOR®

O: 662.268.6333 | C: 601.562.0688
Tyler@TomSmithLand.com



TOM WISEMAN
ASSOCIATE BROKER

O: 662.268.6333 | C: 662.317.0467
TWiseman@TomSmithLand.com

TomSmithLandandHomes.com

Information is believed to be accurate but not guaranteed.





TYLER KILGORE
REALTOR®

O: 662.268.6333 | C: 601.562.0688
Tyler@TomSmithLand.com



TOM WISEMAN
ASSOCIATE BROKER

O: 662.268.6333 | C: 662.317.0467
TWiseman@TomSmithLand.com

TomSmithLandandHomes.com

Information is believed to be accurate but not guaranteed.





TYLER KILGORE
REALTOR®

O: 662.268.6333 | C: 601.562.0688
Tyler@TomSmithLand.com



TOM WISEMAN
ASSOCIATE BROKER

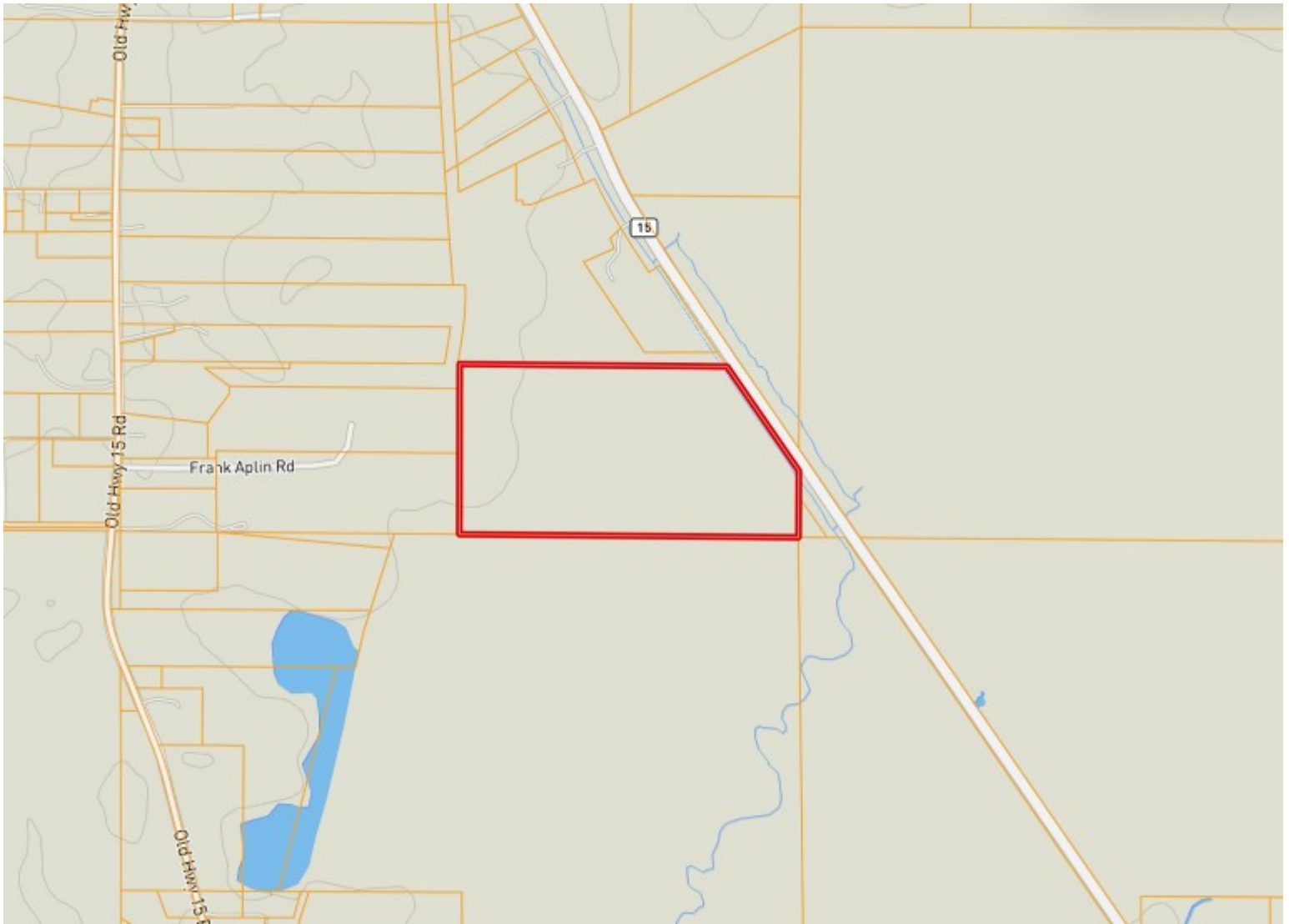
O: 662.268.6333 | C: 662.317.0467
TWiseman@TomSmithLand.com

TomSmithLandandHomes.com

Information is believed to be accurate but not guaranteed.



Ownership Map



TYLER KILGORE
REALTOR®

O: 662.268.6333 | C: 601.562.0688
Tyler@TomSmithLand.com



TOM WISEMAN
ASSOCIATE BROKER

O: 662.268.6333 | C: 662.317.0467
TWiseman@TomSmithLand.com

TomSmithLandandHomes.com

Information is believed to be accurate but not guaranteed.



Aerial Map



[Click Here for the LandId Interactive Map Link](#)

TYLER KILGORE
REALTOR®

O: 662.268.6333 | C: 601.562.0688
Tyler@TomSmithLand.com



TOM WISEMAN
ASSOCIATE BROKER

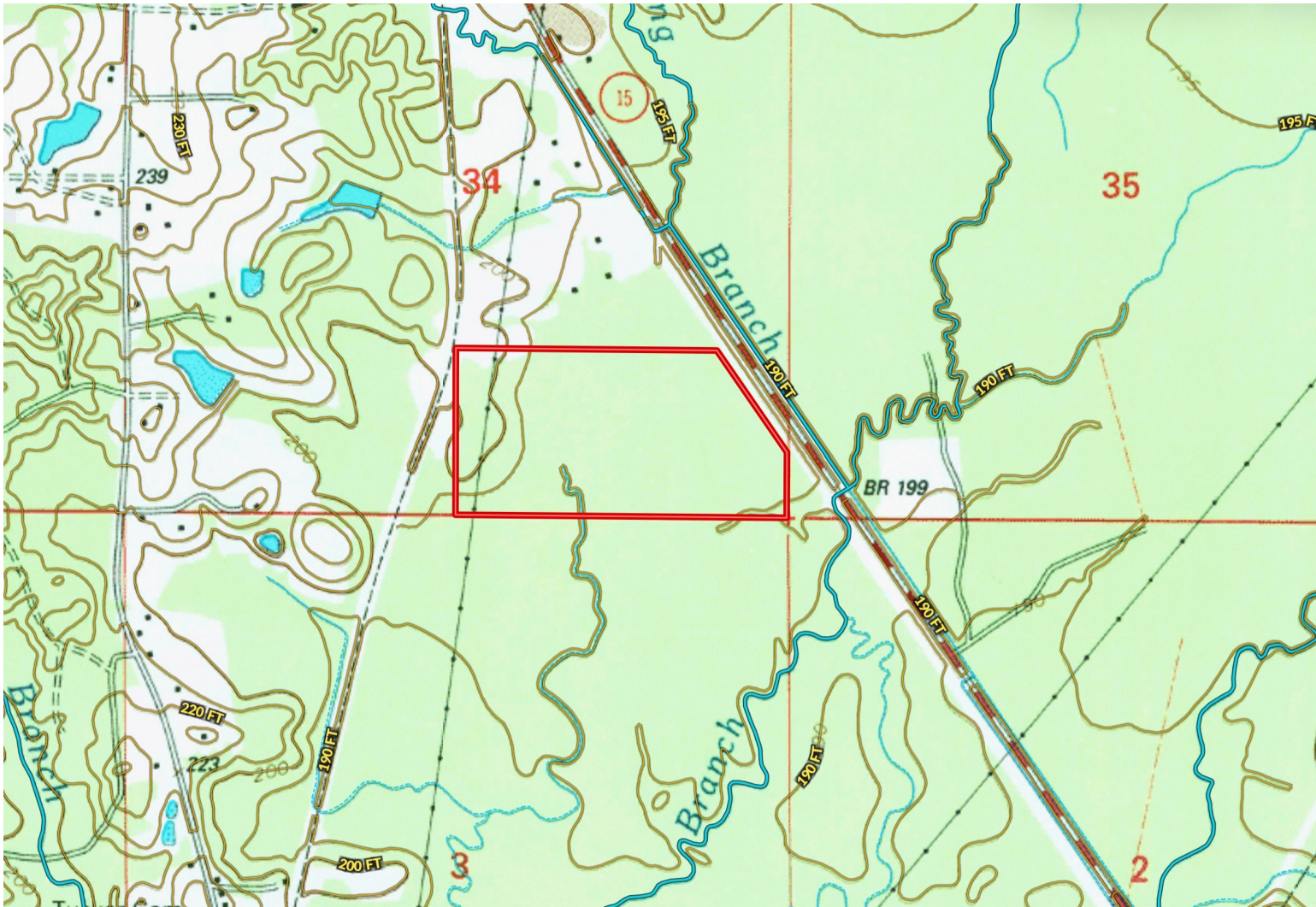
O: 662.268.6333 | C: 662.317.0467
TWiseman@TomSmithLand.com

TomSmithLandandHomes.com

Information is believed to be accurate but not guaranteed.



Topo Map



TYLER KILGORE
REALTOR®

O: 662.268.6333 | C: 601.562.0688
Tyler@TomSmithLand.com



TOM WISEMAN
ASSOCIATE BROKER

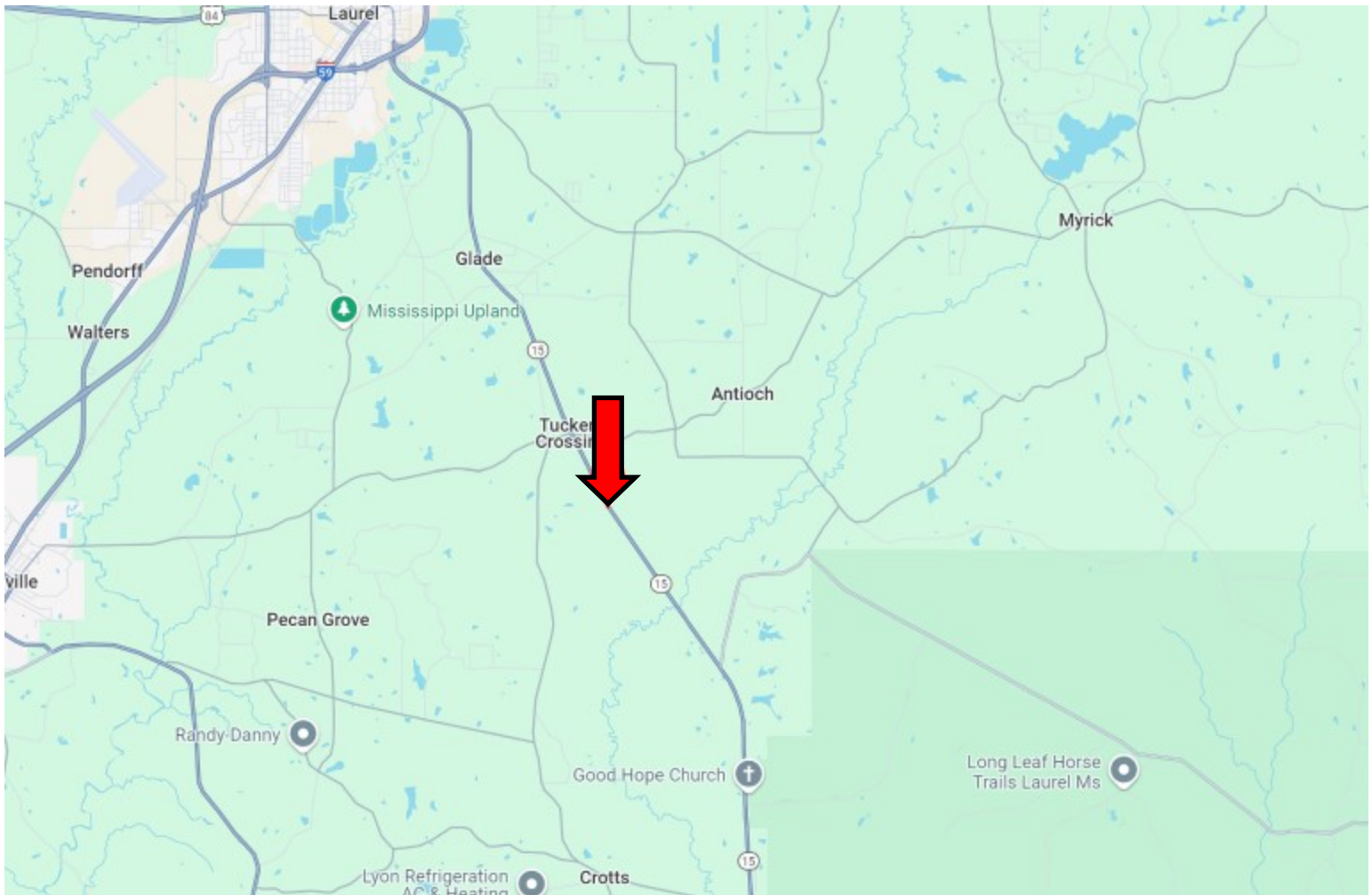
O: 662.268.6333 | C: 662.317.0467
TWiseman@TomSmithLand.com

TomSmithLandandHomes.com

Information is believed to be accurate but not guaranteed.



Directional Map



Directions from I-59 and Hwy 15 South in Laurel, MS: Take exit 96B for Hwy 15S. Travel south on Hwy 15 for 5.6 miles. Turn right onto Whispering Sage Drive. Follow the easement road 0.40 miles to the property entrance. [Google Maps Link](#)



TYLER KILGORE
REALTOR®

O: 662.268.6333 | C: 601.562.0688
Tyler@TomSmithLand.com



TOM WISEMAN
ASSOCIATE BROKER

O: 662.268.6333 | C: 662.317.0467
TWiseman@TomSmithLand.com