

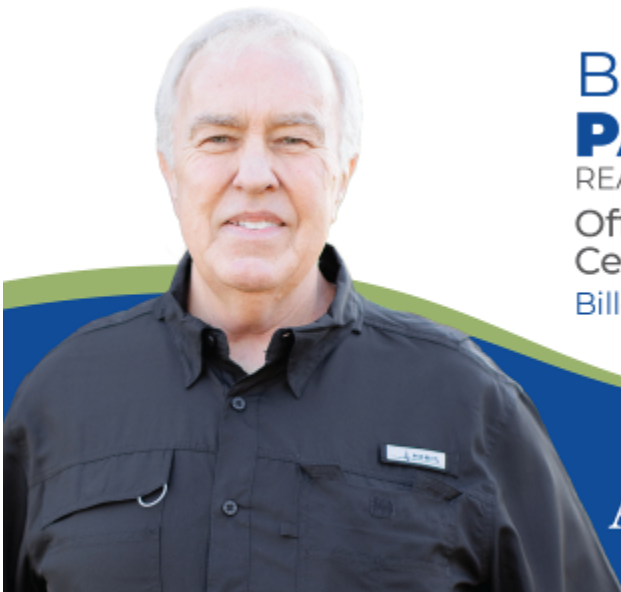
RECREATIONAL HOMESITE



25± Acres in Hinds County, MS

\$187,500

Don't miss the chance to explore this picturesque property located south of Terry, MS, on Moncure Road. This 25± acre Hinds County is primarily open land and features rolling hills and a small pond, perfect for a home site, horse farm, or mini-cattle operation. The property is mostly fenced, offering a peaceful, secluded atmosphere just minutes from Interstate 55. If you're searching for a small farm in southern Hinds County, this is an opportunity you won't want to miss. Call Bill today to schedule your private viewing!



**BILL
PATRICK**
REALTOR®

Office: 601.898.2772

Cell: 601.573.0749

Bill@TomSmithLand.com



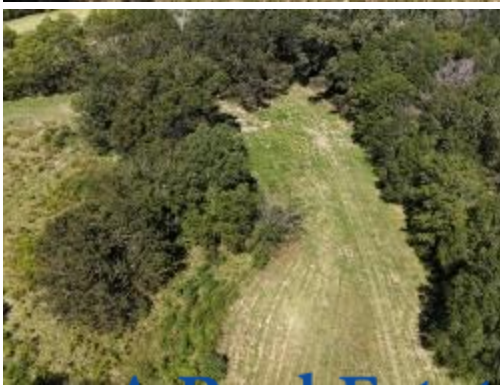
Expect More. Get More.

A Real Estate Expert You Can Trust

TomSmithLandandHomes.com

Information is believed to be accurate but not guaranteed.





A Real Estate Expert You Can Trust!

BILL PATRICK
REALTOR®

O: 601.898.2772 C: 601.573.0749

Bill@TomSmithLand.com

TomSmithLandandHomes.com



Expect More. Get More.



Information is believed to be accurate but not guaranteed.



A Real Estate Expert You Can Trust!

BILL PATRICK
REALTOR®

O: 601.898.2772 C: 601.573.0749

Bill@TomSmithLand.com

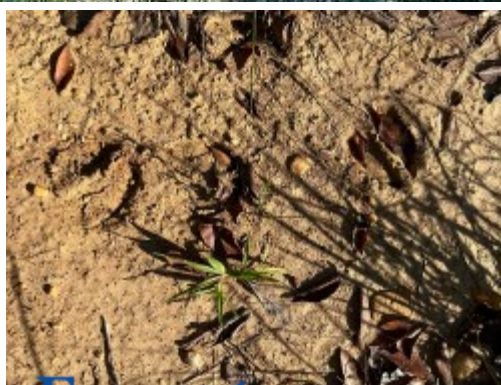
TomSmithLandandHomes.com



Expect More. Get More.



Information is believed to be accurate but not guaranteed.



A Real Estate Expert You Can Trust!

BILL PATRICK
REALTOR®

O: 601.898.2772 C: 601.573.0749

Bill@TomSmithLand.com

TomSmithLandandHomes.com



Expect More. Get More.



Information is believed to be accurate but not guaranteed.

AERIAL MAP



[CLICK HERE FOR THE LANDID INTERACTIVE MAP](#)

A Real Estate Expert
You Can Trust!

BILL PATRICK
REALTOR®

O: 601.898.2772 C: 601.573.0749

Bill@TomSmithLand.com

TomSmithLandandHomes.com

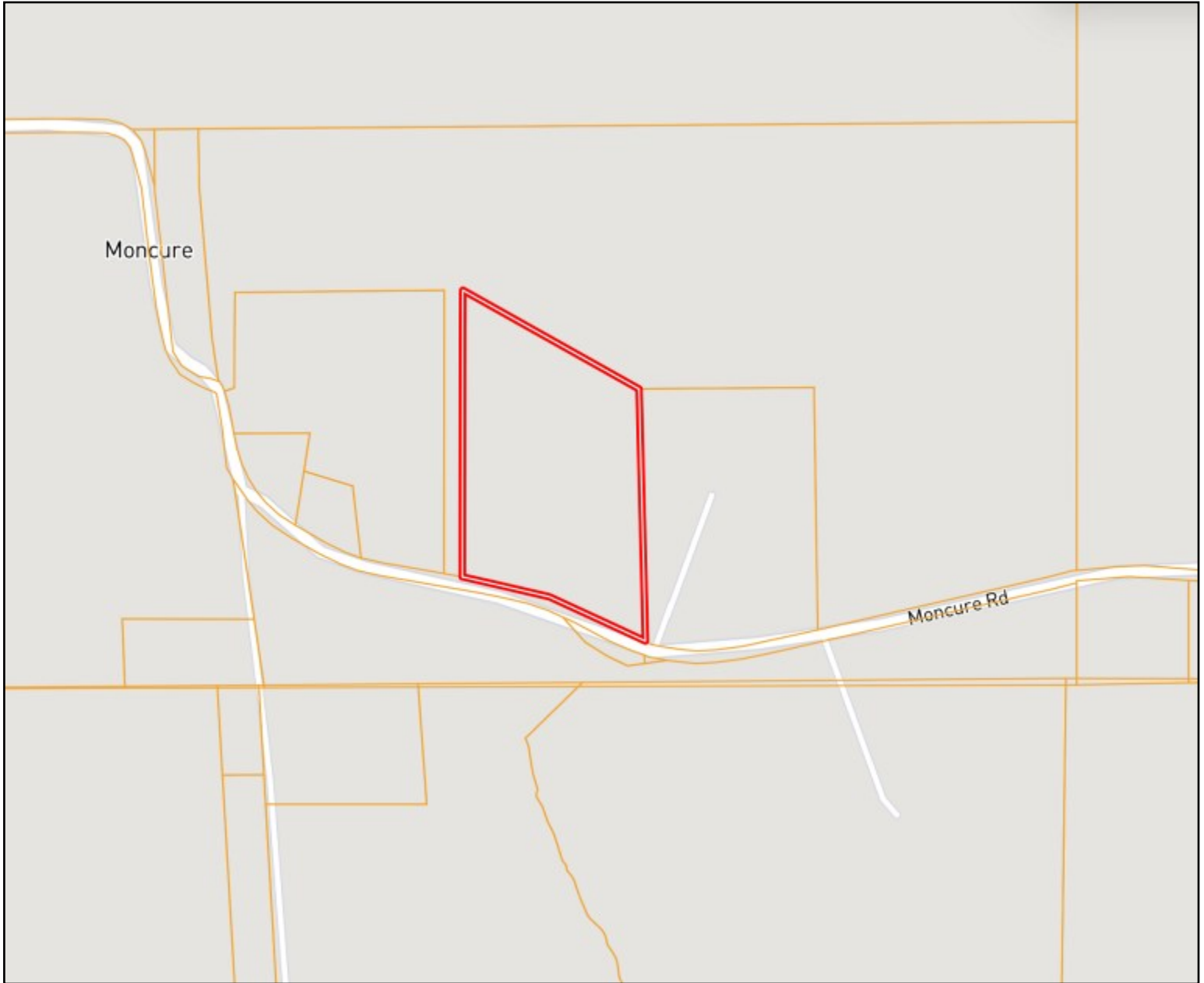


Expect More. Get More.

Information is believed to be accurate but not guaranteed.



OWNERSHIP MAP



A Real Estate Expert
You Can Trust!

BILL PATRICK
REALTOR®

O: 601.898.2772 C: 601.573.0749

Bill@TomSmithLand.com

TomSmithLandandHomes.com

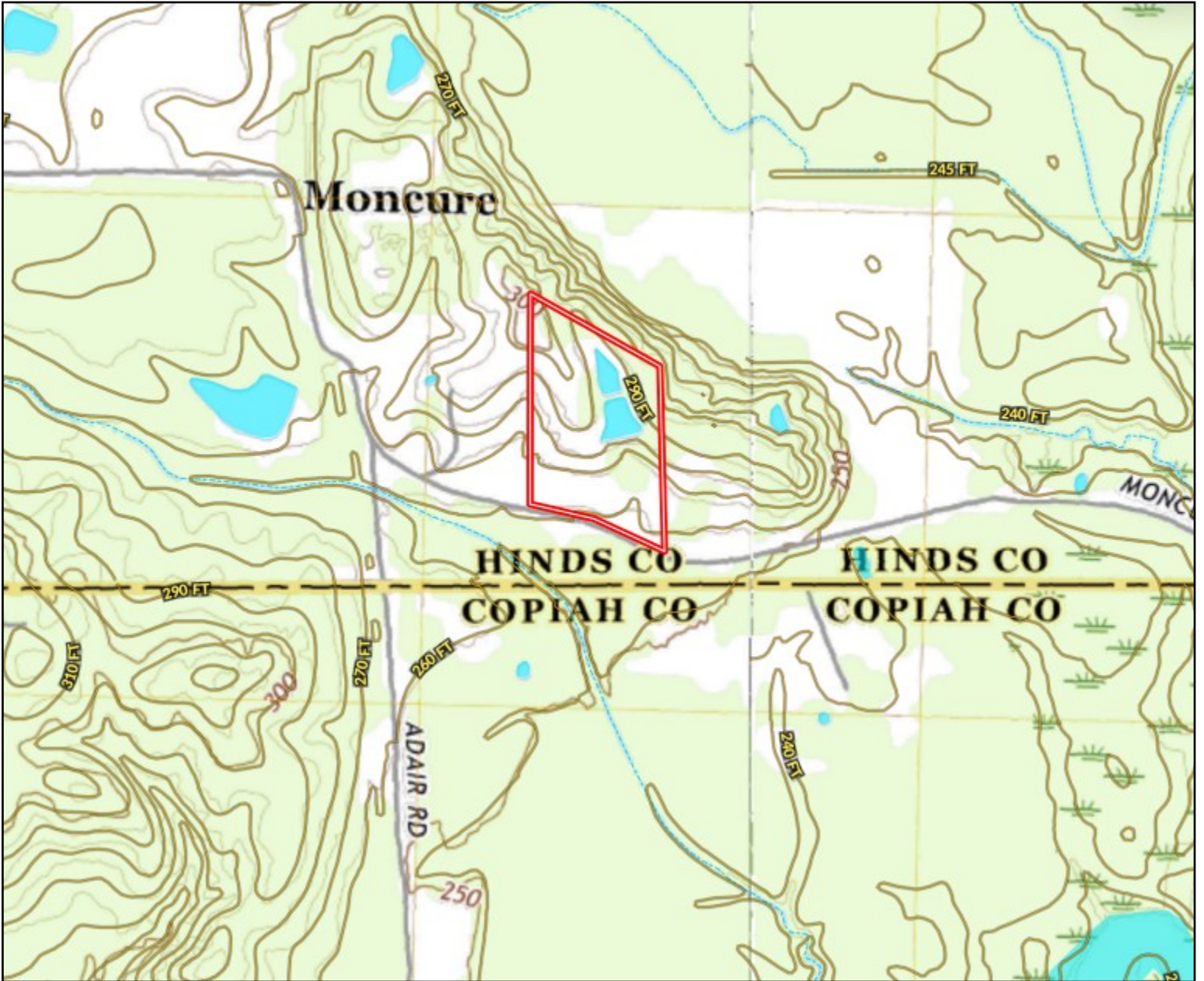


Expect More. Get More.



Information is believed to be accurate but not guaranteed.

TOPOGRAPHY MAP



A Real Estate Expert
You Can Trust!

BILL PATRICK
REALTOR®

O: 601.898.2772 C: 601.573.0749

Bill@TomSmithLand.com

TomSmithLandandHomes.com

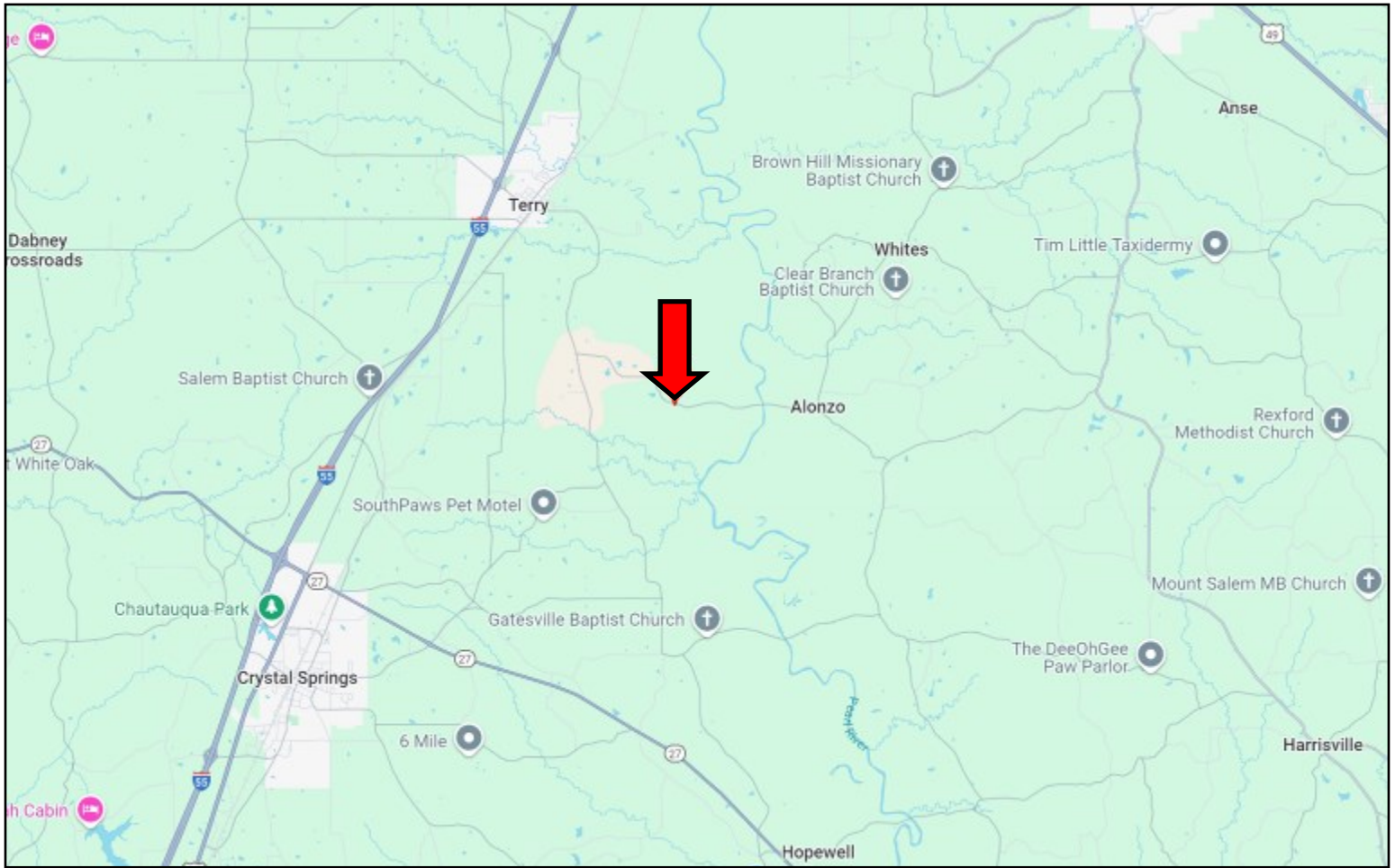


Expect More. Get More.



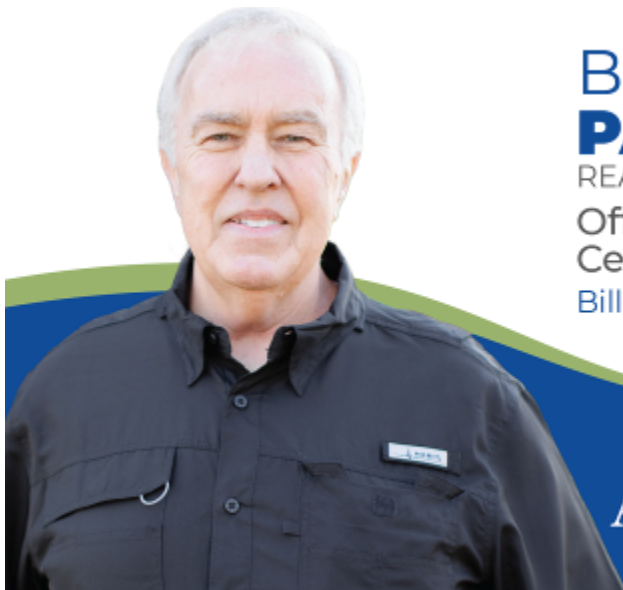
Information is believed to be accurate but not guaranteed.

DIRECTIONAL MAP



DIRECTIONS FROM I-55 IN TERRY, MS: Take exit 78 towards Terry. Turn onto Cunningham St. and travel 0.6 miles. Turn left onto Park Ave. and then immediately turn right onto Georgetown Rd. and travel 0.6 miles. Keep right to continue onto Moncure Marble Rd. and travel 2.6 miles. Turn left onto Moncure Rd. After 2 miles, the property will be on your left.

[GOOGLE MAP LINK](#)



**BILL
PATRICK**
REALTOR®

Office: 601.898.2772
Cell: 601.573.0749
Bill@TomSmithLand.com



Expect More. Get More.

A Real Estate Expert You Can Trust

TomSmithLandandHomes.com

Information is believed to be accurate but not guaranteed.

