

Prime Hunting & Timber Investment Opportunity

99± acres in Sunflower County | \$350,000



This 99+/- acre property in Sunflower County is situated on Fox Road in Shaw, MS, located in the heart of the Mississippi Delta. The tract offers a blend of 92± acres of hardwood timber featuring cypress, oak, and Tupelo gum trees and 7± acres of farmland. The diverse landscape creates the perfect setting for deer and duck hunting, with some timber in a duck-hunting brake and oak trees flourishing on higher ground. Not only is this a recreational haven, but it also presents a valuable investment opportunity, with harvestable timber offering potential returns. For those seeking even more, an additional 50.5± acres of CRP land is available for separate purchase, which provides \$7,700 in annual income for the next six years. This property also includes a fully renovated 3-bedroom, 1-bathroom camp house, ideal for use as a hunting camp. This is a rare chance to secure a property rich in recreational and investment potential. Call Anthony for your tour today!



**ANTHONY
STEEN**

REALTOR®

Office: 662.441.2500

Cell: 662.645.5151

Anthony@TomSmithLand.com



Expect More. Get More.

A Real Estate Expert You Can Trust

TomSmithLandandHomes.com

Information is believed to be accurate but not guaranteed.





A Real Estate Expert *You Can Trust!*

ANTHONY STEEN
REALTOR®

O: 662.441.2500 C: 662.645.5151

Anthony@TomSmithLand.com

TomSmithLandandHomes.com



Expect More. Get More.



Information is believed to be accurate but not guaranteed.



A Real Estate Expert *You Can Trust!*

ANTHONY STEEN
REALTOR®

O: 662.441.2500 C: 662.645.5151

Anthony@TomSmithLand.com

TomSmithLandandHomes.com



Expect More. Get More.





A Real Estate Expert *You Can Trust!*

ANTHONY STEEN
REALTOR®

O: 662.441.2500 C: 662.645.5151

Anthony@TomSmithLand.com

TomSmithLandandHomes.com



Expect More. Get More.





A Real Estate Expert
You Can Trust!

ANTHONY STEEN
 REALTOR®

O: 662.441.2500 C: 662.645.5151

Anthony@TomSmithLand.com

TomSmithLandandHomes.com



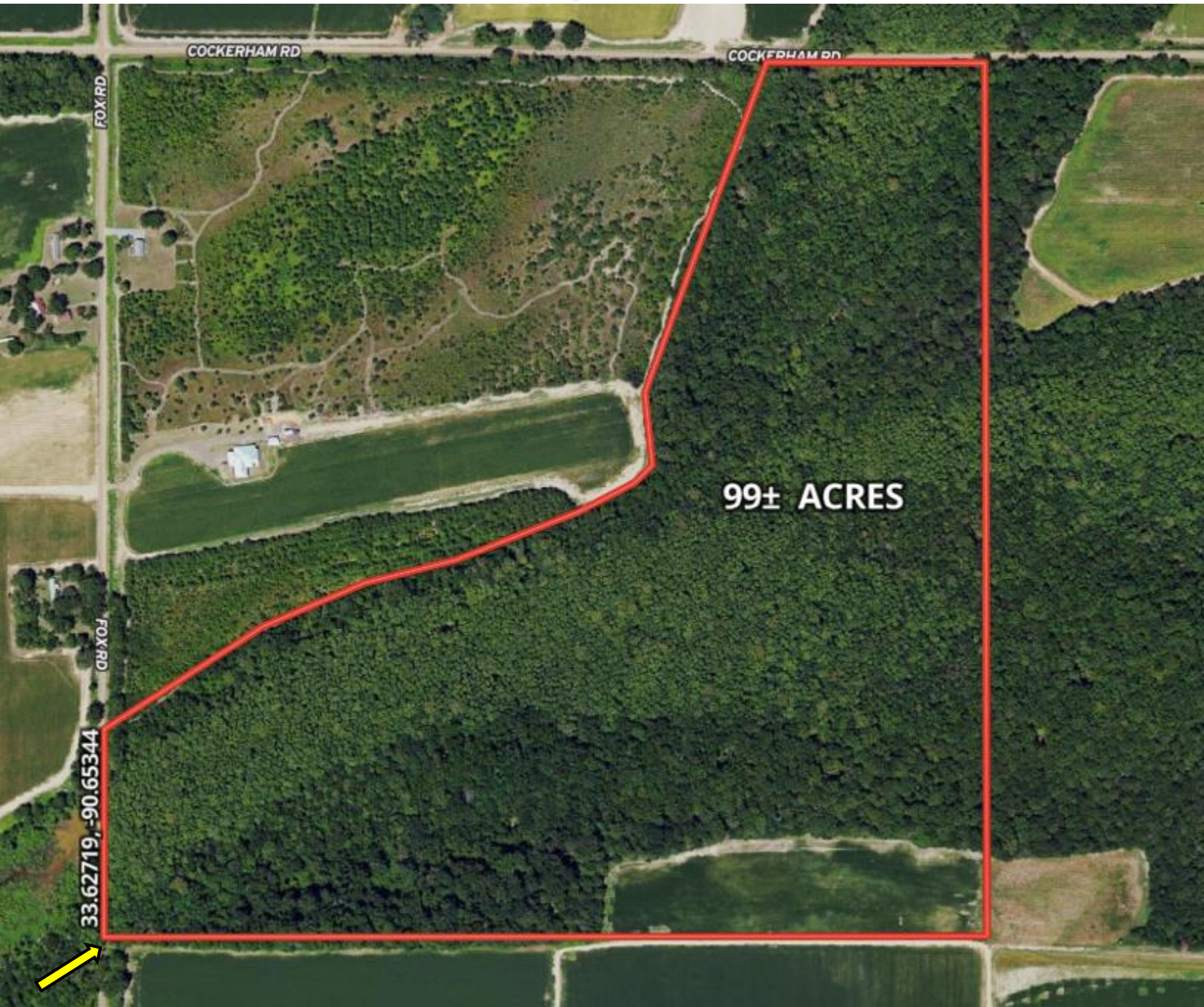
Expect More. Get More.



Information is believed to be accurate but not guaranteed.

AERIAL MAP

[Click for the Interactive Map](#)



A Real Estate Expert
You Can Trust!

ANTHONY STEEN
REALTOR®

O: 662.441.2500 C: 662.645.5151

Anthony@TomSmithLand.com

TomSmithLandandHomes.com

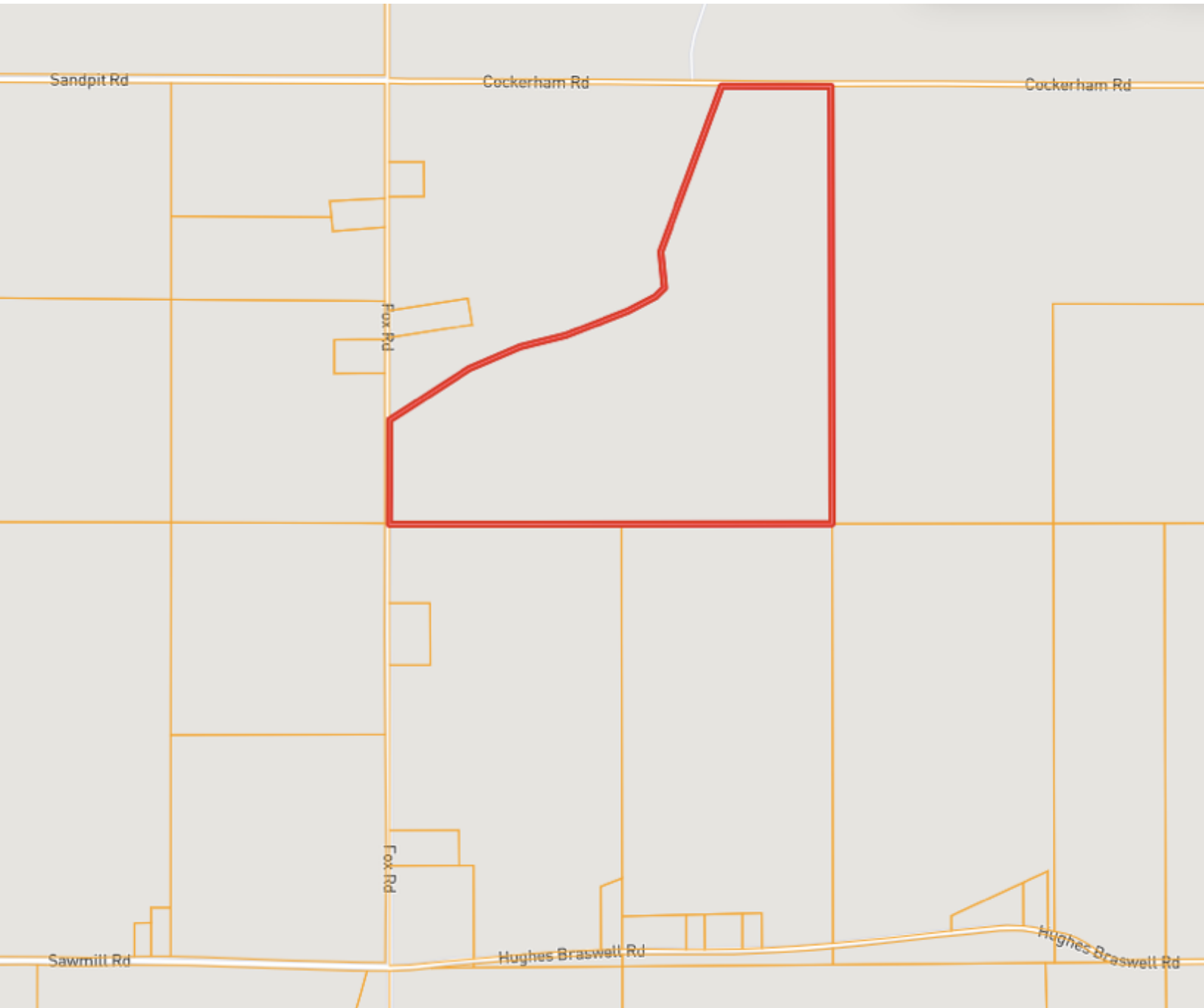


Expect More. Get More.



Information is believed to be accurate but not guaranteed.

OWNERSHIP MAP



A Real Estate Expert
You Can Trust!

ANTHONY STEEN
REALTOR®

O: 662.441.2500 C: 662.645.5151

Anthony@TomSmithLand.com

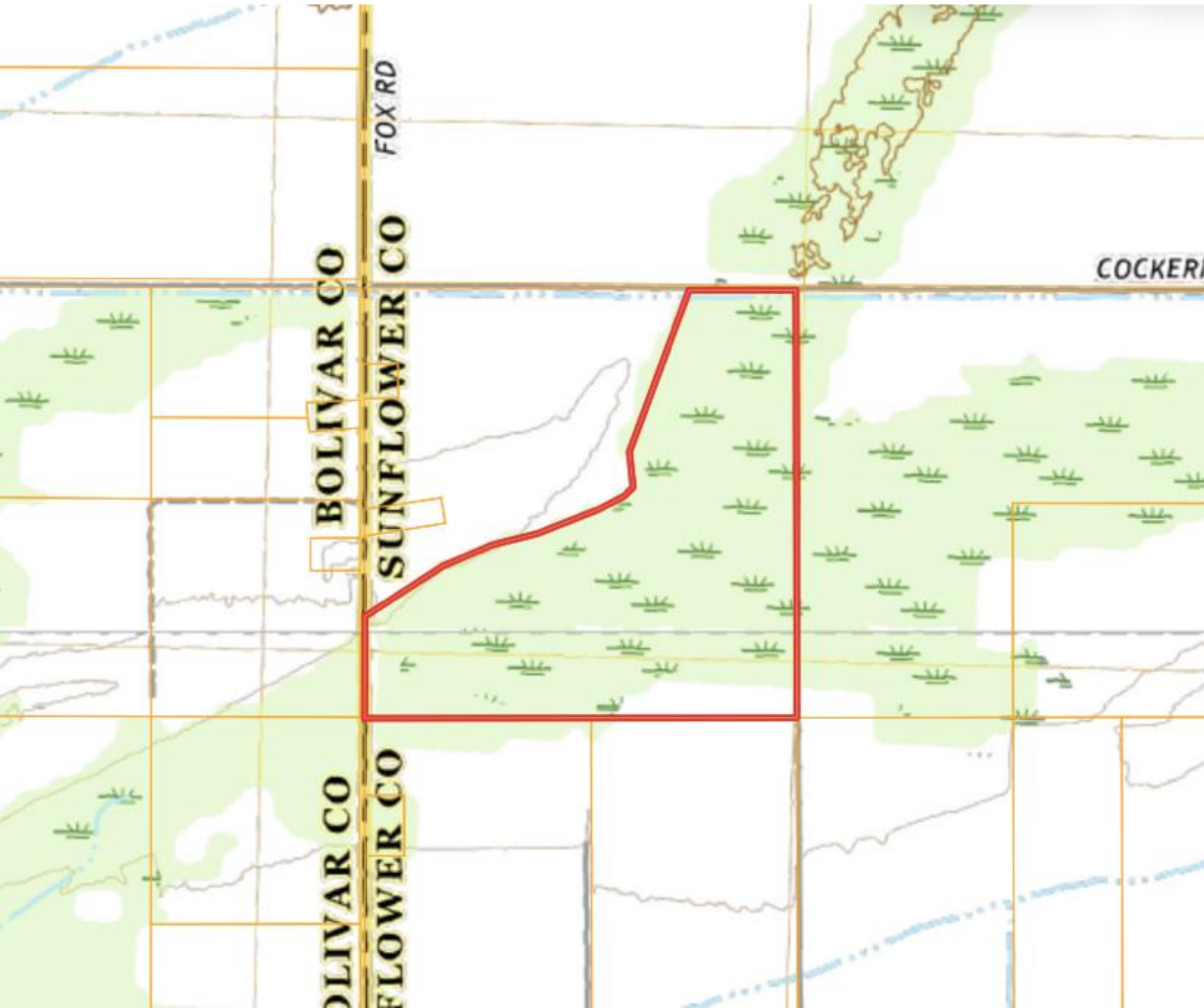
TomSmithLandandHomes.com



Expect More. Get More.



TOPOGRAPHY MAP



A Real Estate Expert
You Can Trust!

ANTHONY STEEN
REALTOR®

O: 662.441.2500 C: 662.645.5151

Anthony@TomSmithLand.com

TomSmithLandandHomes.com



Expect More. Get More.

Information is believed to be accurate but not guaranteed.



SOIL MAP



SOIL CODE	SOIL DESCRIPTION	ACRES	%	CPI	NCCPI	CAP
Db	Dowling clay (sharkey)	64.53	66.63	0	40	5w
Fm	Forestdale silty clay loam, 0.5 to 3 percent slopes	29.95	30.92	0	65	3w
Ag	Alligator silty clay, 0.5 to 3 percent slopes	1.24	1.28	0	49	3e
Ab	Alligator clay, 0.5 to 3 percent slopes	0.58	0.6	0	49	3e
Fb	Forestdale silt loam, 0.5 to 3 percent slopes	0.37	0.38	0	65	3w
Dc	Dowling soils, overwash phases (sharkey)	0.16	0.17	0	43	4w
Fe	Forestdale silty clay loam, 0 to 3 percent slopes	0.03	0.03	0	65	3w
TOTALS		96.86()	100%	-	48.01	4.33

A Real Estate Expert
You Can Trust!

ANTHONY STEEN
REALTOR®

O: 662.441.2500 C: 662.645.5151
Anthony@TomSmithLand.com

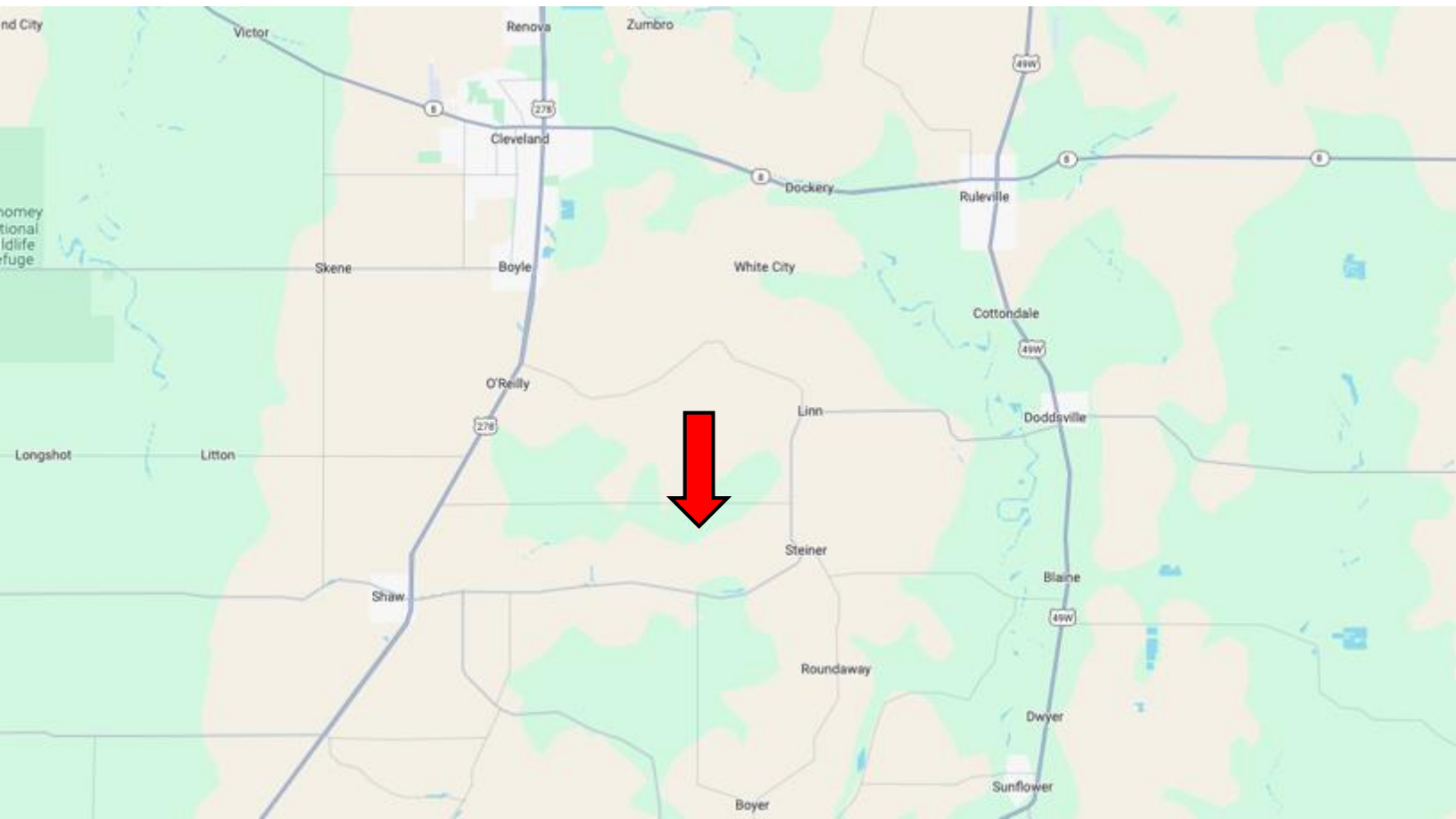
TomSmithLandandHomes.com



Expect More. Get More.



DIRECTIONAL MAP



Address: Fox Rd, Shaw, MS 38773

Directions from US-278 & MS-448 in Shaw, MS: Travel east on MS-448 E for 1.1 miles. Continue straight onto MS-442 E and travel 5.1 miles. Turn left onto Charlie Ellis Rd and travel 0.9 miles. Continue onto Fox Rd. After 0.6 miles, the property will be on the right. [Google Map Link](#)



**ANTHONY
STEEN**

REALTOR®

Office: 662.441.2500

Cell: 662.645.5151

Anthony@TomSmithLand.com



Expect More. Get More.

A Real Estate Expert You Can Trust

TomSmithLandandHomes.com

Information is believed to be accurate but not guaranteed.

