

Prime Hunting Opportunity 78± Acres in Yazoo County, MS



\$230,100

Welcome to 78± acres of turnkey hunting land in Yazoo County, Mississippi, with improved access off Anding Oil City Road. Located in Bentonia, just 20 miles from Yazoo City and 30 miles from Madison, this tract offers the perfect balance of seclusion and convenience. The property features mixed timber, two established food plots, a maintained gas line ideal for shooting lanes, and strong deer and turkey activity throughout. Two active wells on-site are maintained monthly by Denbury, with a separate gated service entrance to ensure privacy. Tucked behind a small country church, the entrance sets the tone for peaceful, undisturbed hunting and recreation. This Yazoo County tract is ready for you to enjoy this season!



**KRISTY
INGOLD**
REALTOR®

Office: 601.898.2772
Cell: 662.792.9949
Kristy@TomSmithLand.com



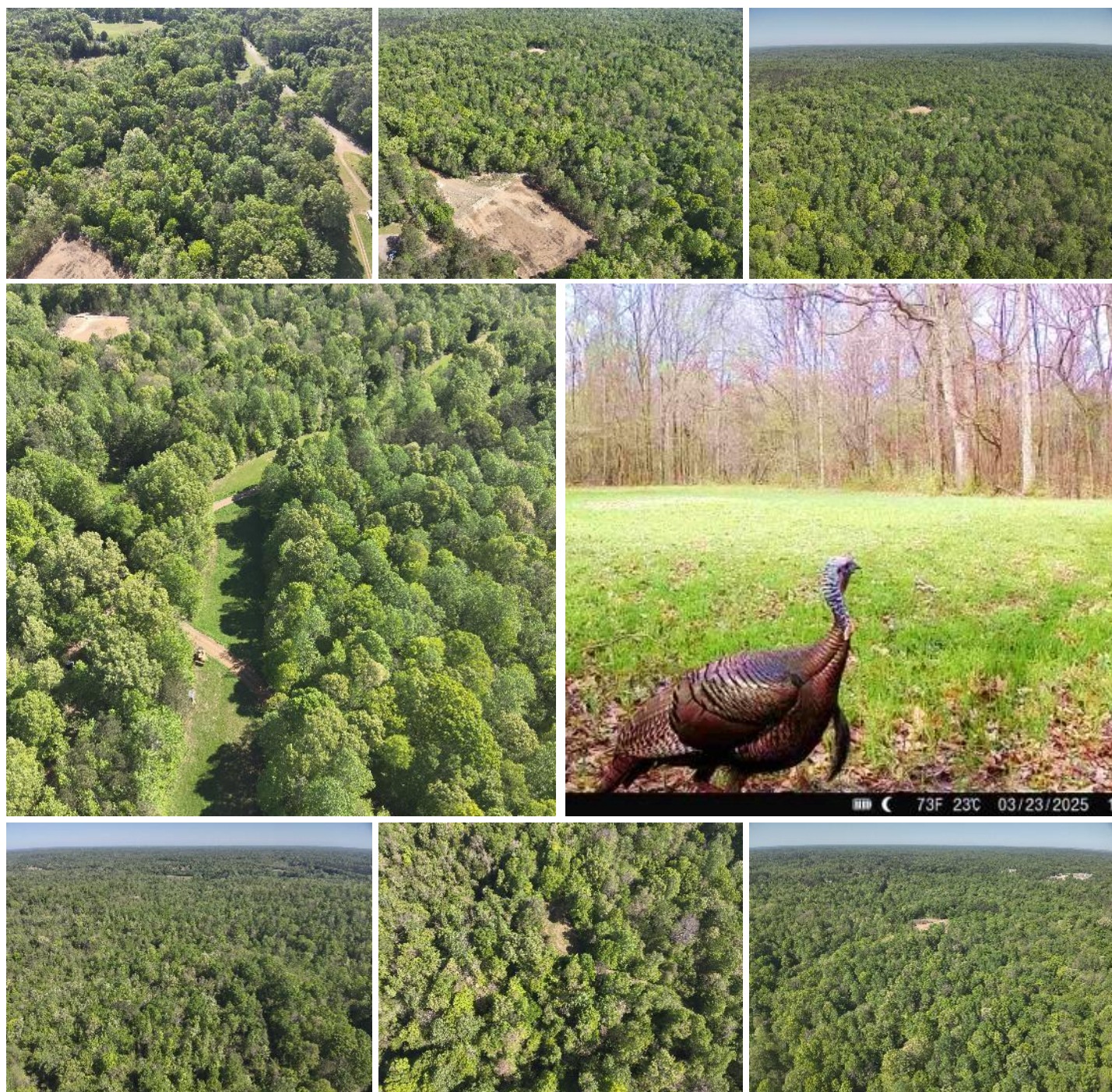
Expect More. Get More.

A Real Estate Expert You Can Trust

TomSmithLandandHomes.com

Information is believed to be accurate but not guaranteed.





A Real Estate Expert
You Can Trust!

KRISTY INGOLD
 REALTOR®

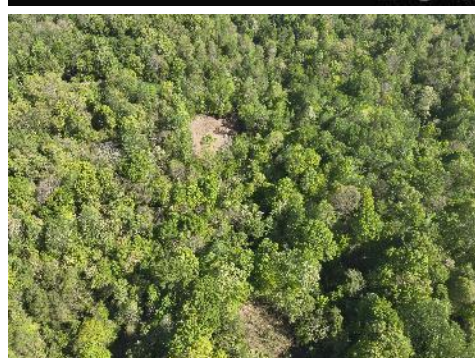
O: 601.898.2772 C: 662.792.9949

Kristy@TomSmithLand.com

TomSmithLandandHomes.com



Information is believed to be accurate but not guaranteed.



A Real Estate Expert
You Can Trust!

KRISTY INGOLD
REALTOR®

O: 601.898.2772 C: 662.792.9949

Kristy@TomSmithLand.com

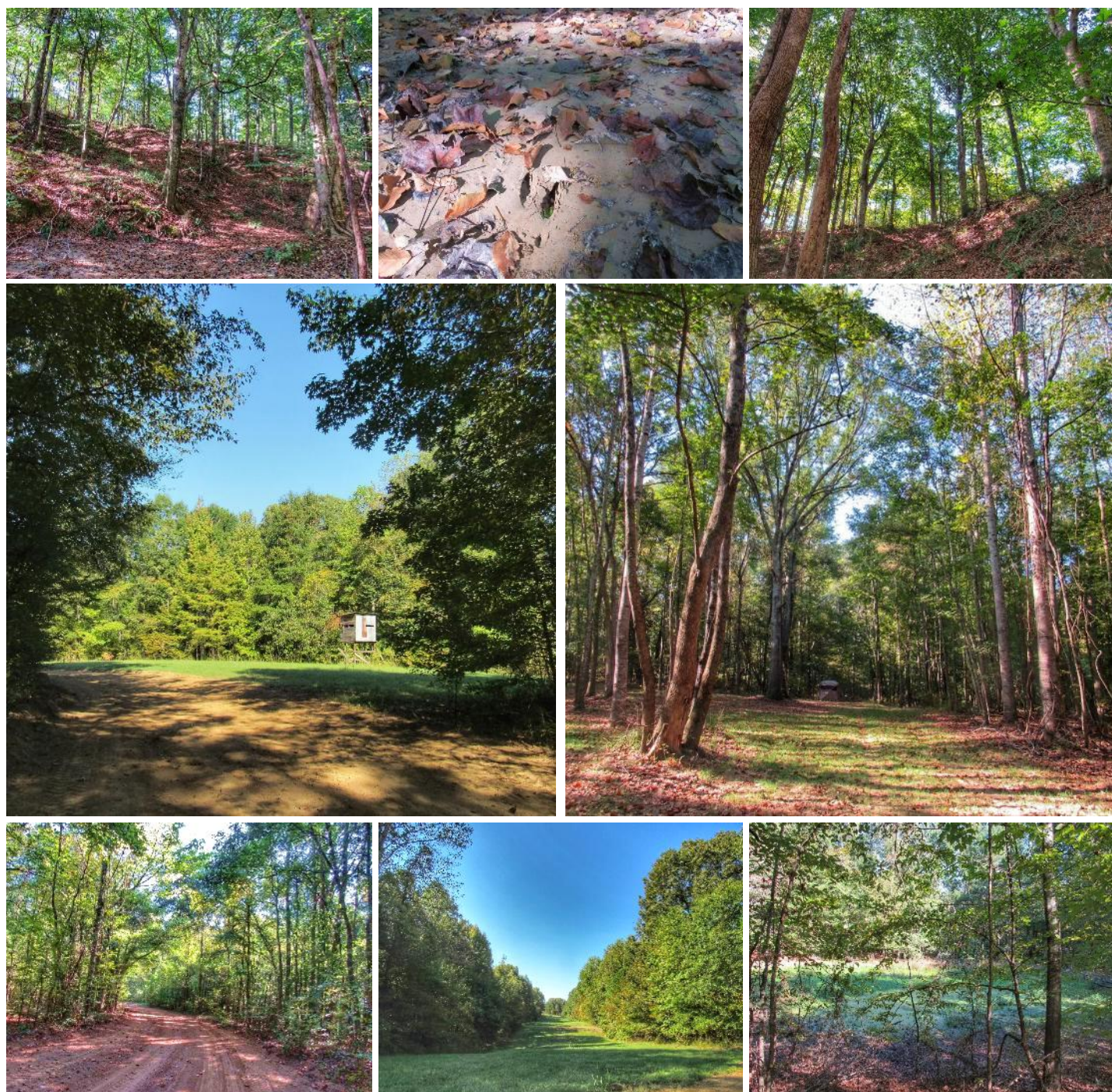
TomSmithLandandHomes.com



Expect More. Get More.



Information is believed to be accurate but not guaranteed.



A Real Estate Expert
You Can Trust!

KRISTY INGOLD
 REALTOR®

O: 601.898.2772 C: 662.792.9949

Kristy@TomSmithLand.com

TomSmithLandandHomes.com

**Tom
 Smith**
 LAND AND
 HOMES

Expect More. Get More.

2011-2024
BEST
 BROKERS

Information is believed to be accurate but not guaranteed.



A Real Estate Expert
You Can Trust!

KRISTY INGOLD
REALTOR®

O: 601.898.2772 C: 662.792.9949

Kristy@TomSmithLand.com

TomSmithLandandHomes.com



Expect More. Get More.

Information is believed to be accurate but not guaranteed.



Aerial Map



[Click Here for a LandId Interactive Map Link](#)

A Real Estate Expert
You Can Trust!

KRISTY INGOLD
REALTOR®

O: 601.898.2772 C: 662.792.9949

Kristy@TomSmithLand.com

TomSmithLandandHomes.com

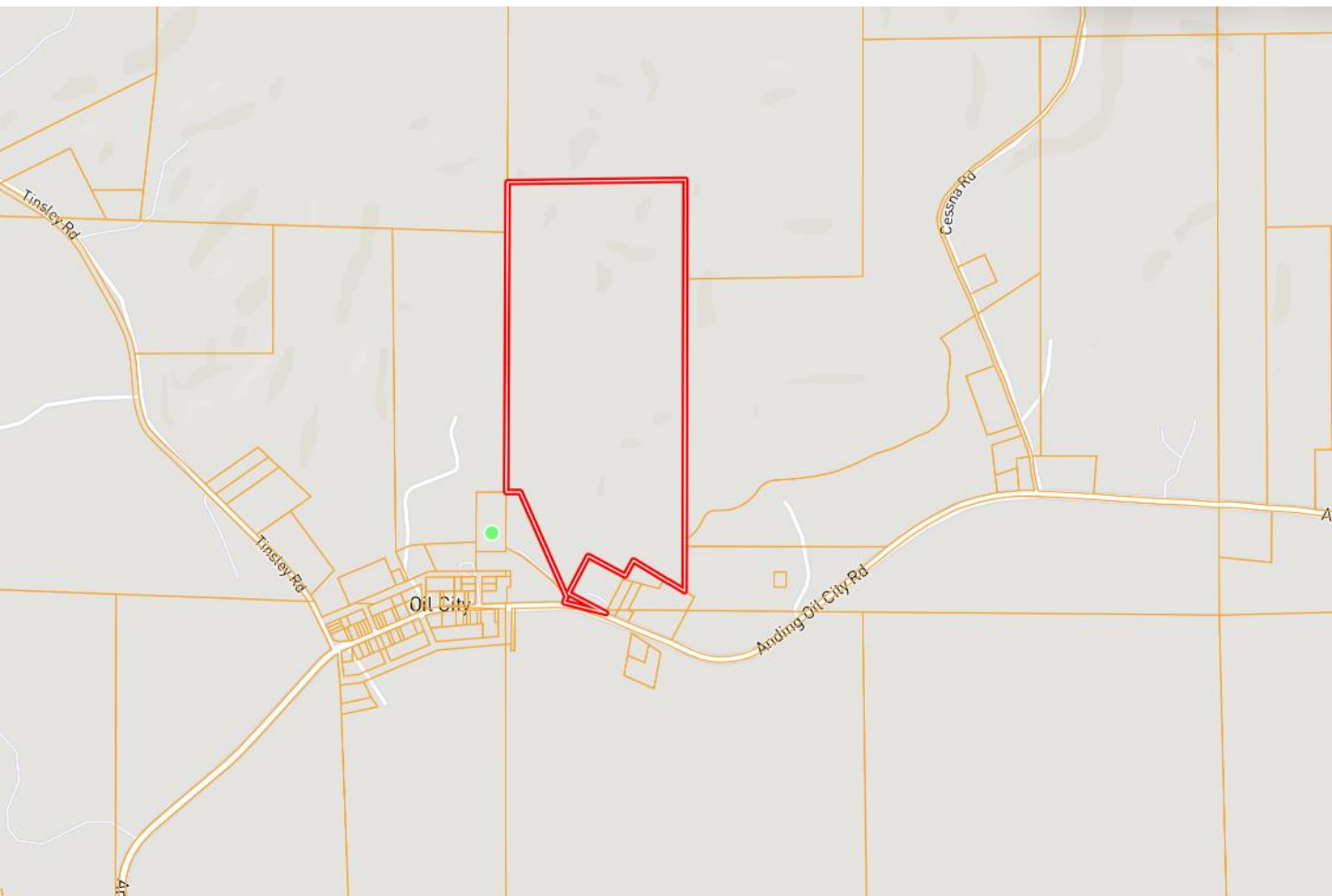


Expect More. Get More.

Information is believed to be accurate but not guaranteed.



Ownership Map



A Real Estate Expert
You Can Trust!

KRISTY INGOLD
REALTOR®

O: 601.898.2772 C: 662.792.9949

Kristy@TomSmithLand.com

TomSmithLandandHomes.com

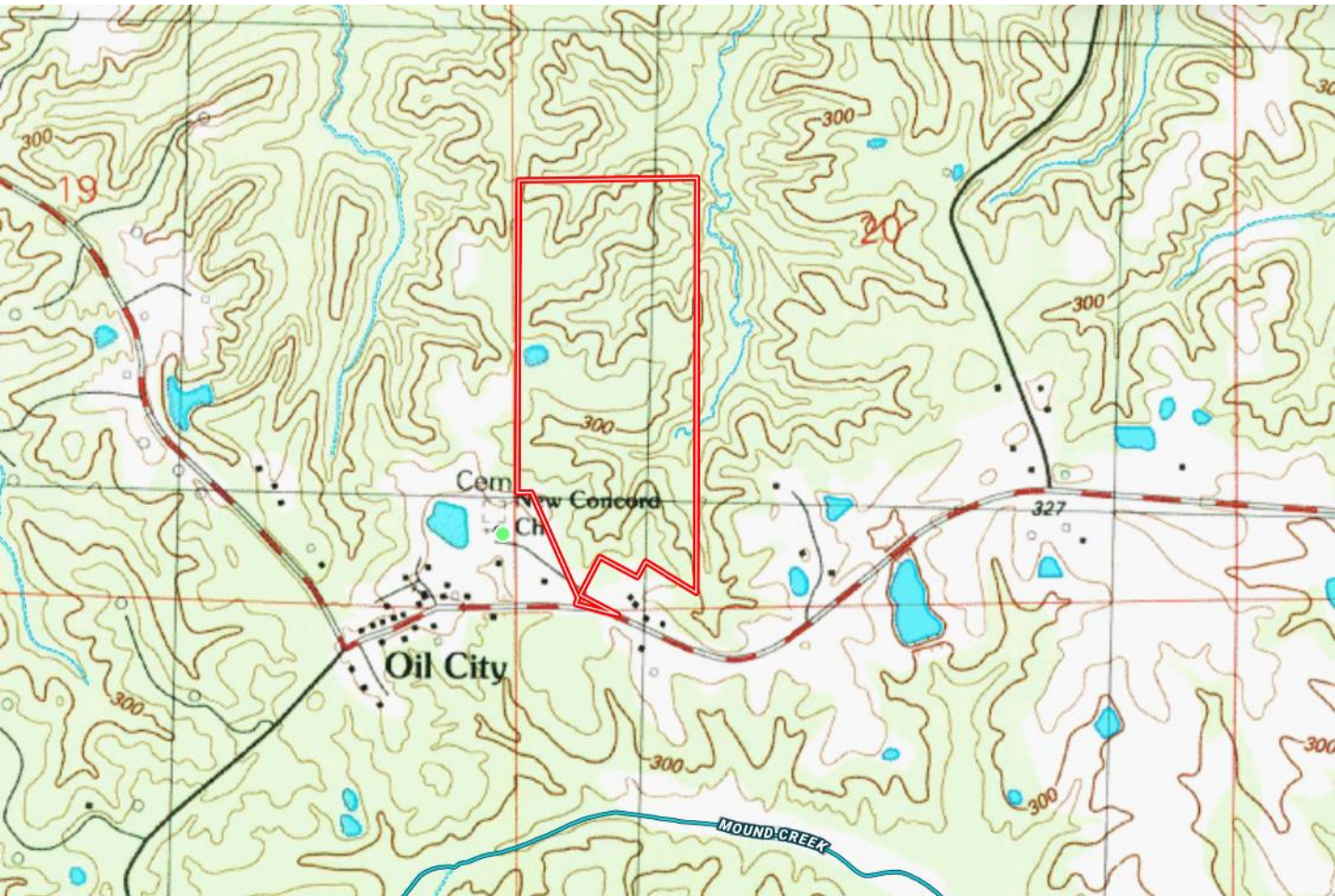


Expect More. Get More.



Information is believed to be accurate but not guaranteed.

Topography Map



A Real Estate Expert
You Can Trust!

KRISTY INGOLD
REALTOR®

O: 601.898.2772 C: 662.792.9949

Kristy@TomSmithLand.com

TomSmithLandandHomes.com



Expect More. Get More.

Information is believed to be accurate but not guaranteed.



Soil Map



SOIL CODE	SOIL DESCRIPTION	ACRES	%	CPI	NCCPI	CAP
GuE	Gullied land-Memphis complex, 5 to 30 percent slopes	64.49	83.42	0	2	7e
LoC2	Loring silt loam, 5 to 8 percent slopes, moderately eroded, central	12.09	15.64	0	48	4e
Mo	Morganfield silt loam, 0 to 2 percent slopes, occasionally flooded	0.73	0.94	0	77	2w

A Real Estate Expert
You Can Trust!

KRISTY INGOLD
REALTOR®

O: 601.898.2772 C: 662.792.9949

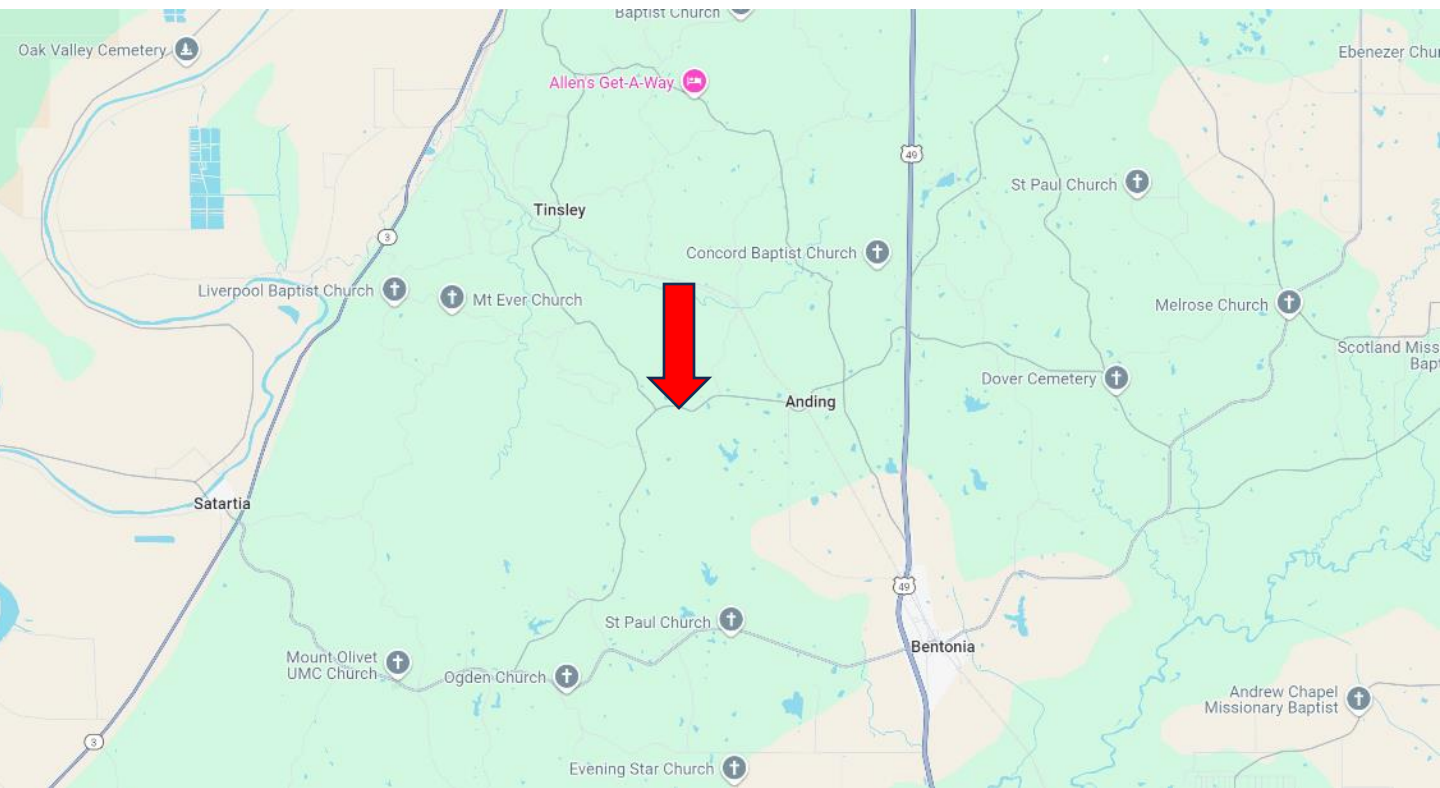
Kristy@TomSmithLand.com

TomSmithLandandHomes.com



Information is believed to be accurate but not guaranteed.

Directional Map



Directions from the Intersection of Hwy 49 and Hwy 433 in Bentonia, MS: Travel Hwy 49 for 1.6 miles. Turn left onto Old Hwy 49 and travel 2.6 miles. Turn left onto Anding Oil Road. After 2.8 miles the property entrance will be on the right.

[GOOGLE MAP LINK](#)



**KRISTY
INGOLD**
REALTOR®

Office: 601.898.2772
Cell: 662.792.9949
Kristy@TomSmithLand.com



Expect More. Get More.

A Real Estate Expert You Can Trust

TomSmithLandandHomes.com

Information is believed to be accurate but not guaranteed.

